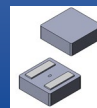


Flat Wire / Hot Pressed Molded Power Inductor



AMELH7030S

Request Samples



Check Inventory



7.8 x 7.8 x 2.9 mm
RoHS/RoHS II Compliant
MSL Level = 1

Features

- Excellent current capacity – up to 50A
- Exceptionally low DCR – down to only 1.1mΩ
- Soft saturation
- Compact size for high-density designs
- Shielded constructions for low EMI

Applications

- Body electronics
- Lighting
- Motor control
- Solar inverters and solar power
- DC/DC converters in distributed power systems
- Battery powered device

Electrical Specifications

Part Number	Inductance	Tolerance	DC Resistance		Saturation Current		Temperature Rise Current		Self-Resonant Frequency
	0.1MHz/ 1.0V		Typ	Max	Typ	Max	Typ	Max	Min
Units	μH	%	mΩ		A		A		MHz
Symbol	L	M	DCR		Isat		Irms		SRF
AMELH7030S-R24MT	0.24	20	1.1	1.3	50.0	46.0	37.2	33.0	115
AMELH7030S-R47MT	0.47	20	1.9	2.3	36.0	33.0	29.5	25.0	68
AMELH7030S-R68MT	0.68	20	2.5	3.0	28.0	25.0	26.0	23.0	52
AMELH7030S-1R0MT	1.0	20	3.8	4.6	23.0	20.0	23.0	20.0	47
AMELH7030S-1R5MT	1.5	20	5.0	6.0	17.6	15.6	19.5	18.0	38
AMELH7030S-2R2MT	2.2	20	7.1	8.5	16.0	14.5	16.5	15.0	26
AMELH7030S-3R3MT	3.3	20	10.4	12.5	13.5	12.0	13.8	12.3	20
AMELH7030S-4R7MT	4.7	20	14.8	17.8	10.6	9.6	11.5	10.0	15
AMELH7030S-5R6MT	5.6	20	17.8	21.4	9.4	8.4	10.5	9.0	14
AMELH7030S-6R8MT	6.8	20	24.2	27.1	8.6	7.6	9.4	8.0	13
AMELH7030S-8R2MT	8.2	20	28.5	32.8	8.0	7.0	8.5	7.5	11
AMELH7030S-100MT	10.0	20	30.8	37.3	7.5	6.5	7.6	6.6	10

Test Conditions:

Isat: DC current at which the inductance drops 30% from its nominal value.

Irms: DC current that causes the temperature rise (ΔT , approximate 40 °C) from 25°C ambient.

Operating Voltage: 40V

Operating Temperature: -40°C ~ +125°C. (including self-temperature rise)

Storage Condition: -40°C ~ +125°C (on board), -10°C ~ +40°C (with packaging) and R.H. 85% max.

AMELH7030S Series is RoHS Compliant and Pb free.

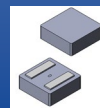


12117 Bee Caves Rd, Bldg-3, Suite 200
Bee Cave, TX 78738
Phone: 512-371-6159 Fax: 512-351-8858
For terms and conditions of sales, please visit:
www.abracon.com

REVISION Initial Release :
6/18/2025

ABRACON IS
ISO9001-2015
CERTIFIED

Flat Wire / Hot Pressed Molded Power Inductor



AMELH7030S

Request Samples

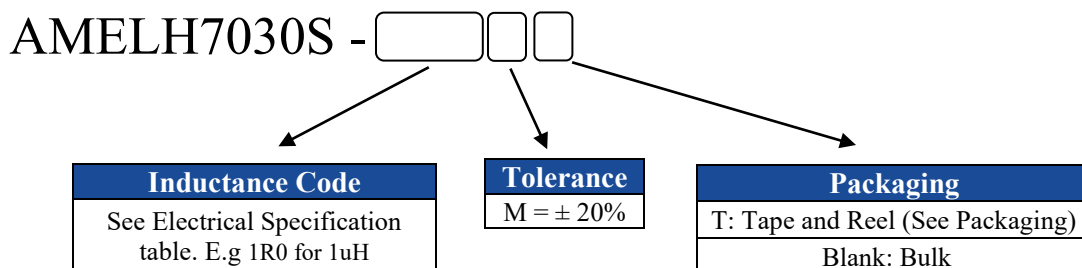


Check Inventory

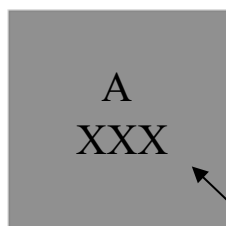


7.8 x 7.8 x 2.9 mm
RoHS/RoHS II Compliant
MSL Level = 1

Part Identification



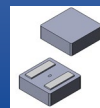
Marking



Inductance Code
e.g. 2R2

Marking Method = Ink Marking

Flat Wire / Hot Pressed Molded Power Inductor



AMELH7030S

Request Samples

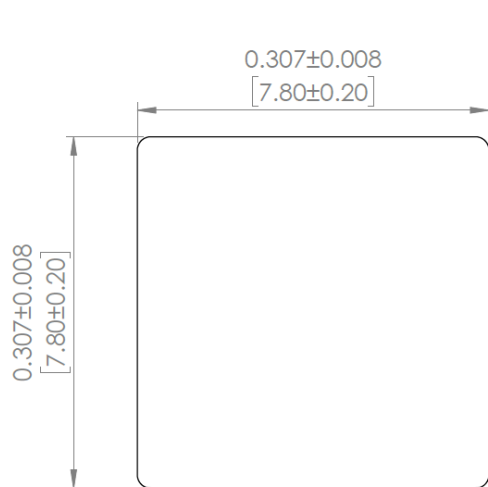


Check Inventory

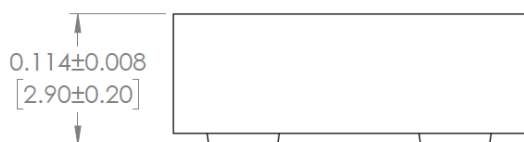


7.8 x 7.8 x 2.9 mm
RoHS/RoHS II Compliant
MSL Level = 1

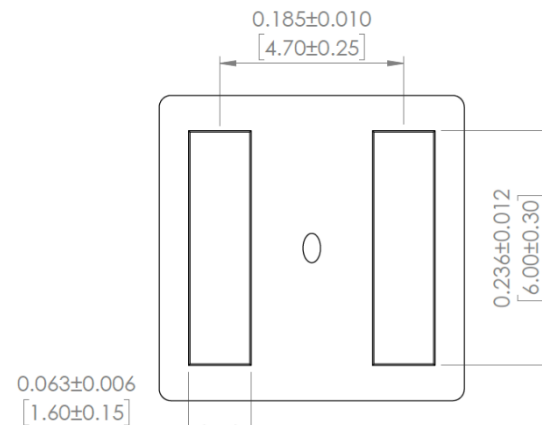
Mechanical Specifications



TOP VIEW

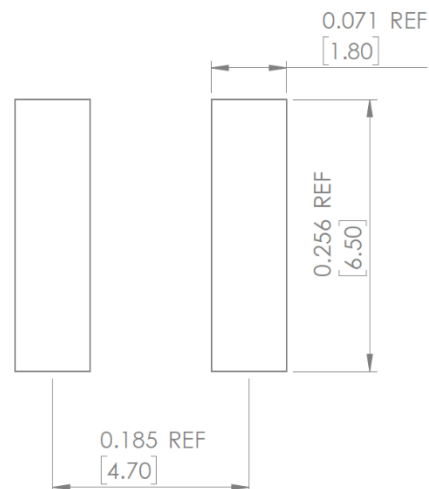


FRONT VIEW



BOTTOM VIEW

RECOMMENDED LAND PATTERN



NOTES:

The above PCB layout reference only.
Recommending solder paste thickness at .005[0.15] and above.
Inductance code markings, black.

DIMENSIONS: INCHES[mm]

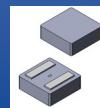


12117 Bee Caves Rd, Bldg-3, Suite 200
Bee Cave, TX 78738
Phone: 512-371-6159 Fax: 512-351-8858
For terms and conditions of sales, please visit:
www.abracon.com

REVISION Initial Release :
6/18/2025

ABRACON IS
ISO9001-2015
CERTIFIED

Flat Wire / Hot Pressed Molded Power Inductor



AMELH7030S

Request Samples

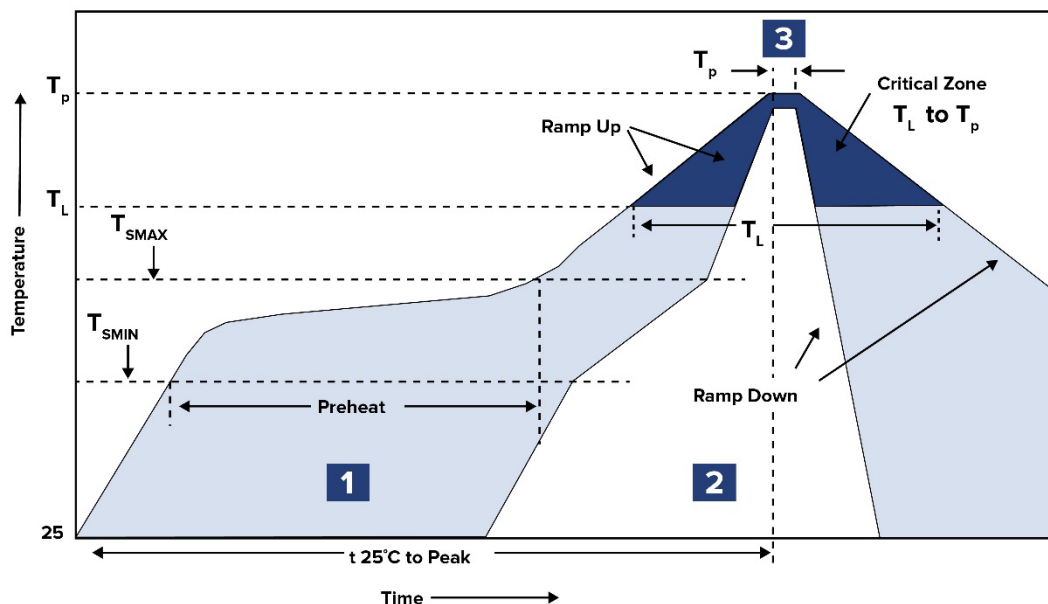


Check Inventory



7.8 x 7.8 x 2.9 mm
RoHS/RoHS II Compliant
MSL Level = 1

Reflow Profile



Zone	Description	Temperature	Times
1	Preheat	$T_{SMIN} \sim T_{SMAX}$ 150°C ~ 200°C	60 ~ 120 sec.
2	Reflow	T_L 217°C	60 ~ 150 sec.
3	Peak heat	T_p 250°C±5°C	10 sec. MAX

Ref. Solder paste: Sn/3.0Ag/0.5Cu (Pb-free assembly)

Ramp up rate: 3°C/s Max.

Ramp down rate: 6°C/s Max.

Time from 25C to T_p : 8mins Max

Refer to standard IPC/JEDEC J-STD-020E for more information

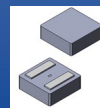


12117 Bee Caves Rd, Bldg-3, Suite 200
Bee Cave, TX 78738
Phone: 512-371-6159 Fax: 512-351-8858
For terms and conditions of sales, please visit:
www.abracon.com

REVISION Initial Release :
6/18/2025

ABRACON IS
ISO9001-2015
CERTIFIED

Flat Wire / Hot Pressed Molded Power Inductor



AMELH7030S

Request Samples



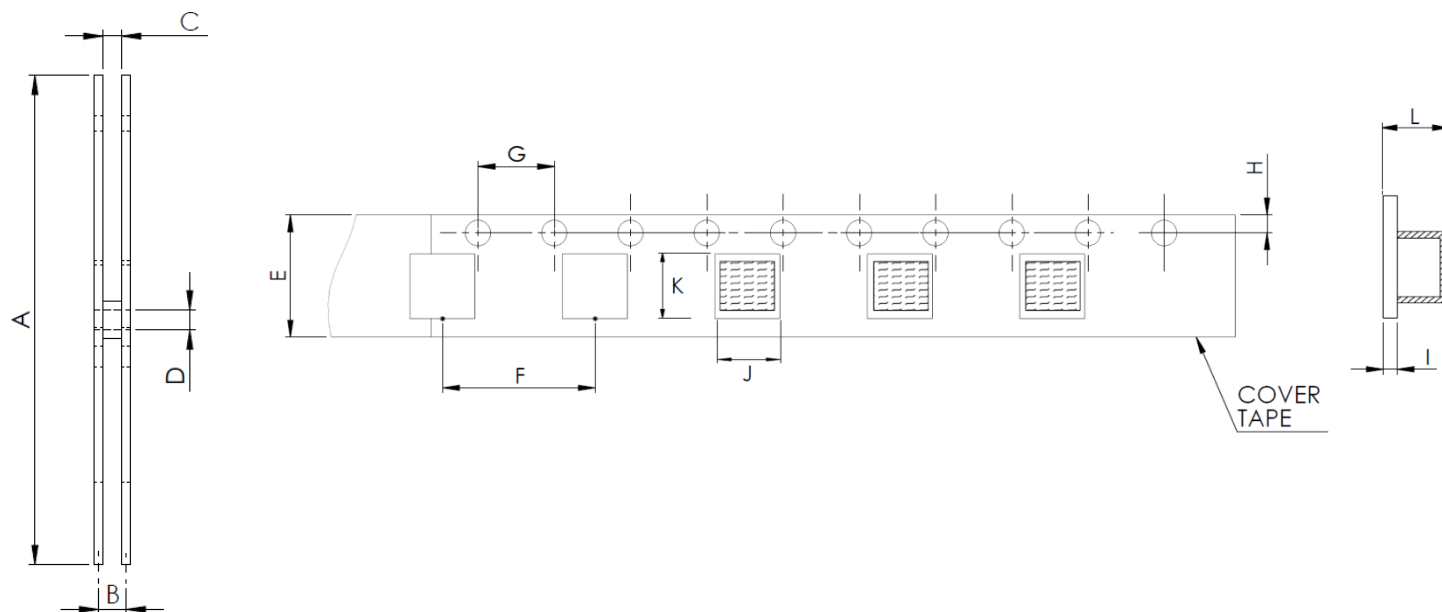
Check Inventory



7.8 x 7.8 x 2.9 mm
RoHS/RoHS II Compliant
MSL Level = 1

Packaging

T: Tape & Reel, 1500 pcs/reel



A	B	D	E	F	G	H	I	J	K	L
330.0	16.4±2	13.0±0.5	16.0±0.3	12.0±0.1	4.0±0.1	1.75±0.1	0.35±0.1	8.20 Ref.	8.20 Ref.	3.30 Ref.

Dimensions: mm

ATTENTION: Abracon LLC's products are Commercial-Off-The-Shelf (COTS, which are designed, intended and validated for use in commercial, industrial and automotive applications. The customer is responsible for testing and verifying the performance of an Abracon solution to meet their system-level requirements.



12117 Bee Caves Rd, Bldg-3, Suite 200
Bee Cave, TX 78738
Phone: 512-371-6159 Fax: 512-351-8858
For terms and conditions of sales, please visit:
www.abracon.com

REVISION Initial Release :
6/18/2025

ABRACON IS
ISO9001-2015
CERTIFIED