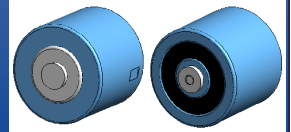


# High Capacitance Supercapacitors



ADCP-E02R7S

Request Samples



Check Inventory



Various Sizes

RoHS/RoHS II Compliant

MSL Level = 2

## Features

- High Energy density of over 6Wh/Kg
- Low Leakage Current as small as 2.8mA
- Low Self-discharge rate, 72 hours @ discharge <5%
- Excellent cycle life of >500K cycles @25C
- Green, meet RoHS requirements.

## Applications

- Power Assist Circuits
- Power Backup
- Energy Storage
- SSD applications
- Large Arrays and Module designs

## Electrical Specifications

Part Number	Rated Voltage (U <sub>R</sub> )	Surge Voltage (Max)	Capacitance	Tolerance	ESR (Max)		Continuous Current (Max)	Peak Current (Max)	Leakage Current	Stored Energy (Max)	Gravimetric Energy Density
	DC (V)	DC (V)			Farads	See Part number Identifier					
ADCP-E02R7SA128	2.7	2.85	1200	Q, M	0.40	0.55	70	976	2.80	1.2150	4.67
ADCP-E02R7SA158	2.7	2.85	1500	Q, M	0.33	0.45	84	1209	3.00	1.5188	5.42
ADCP-E02R7SA208	2.7	2.85	2000	Q, M	0.25	0.35	110	1588	4.20	2.0250	5.63
ADCP-E02R7SA308	2.7	2.85	3000	Q, M	0.22	0.26	130	2275	5.20	3.0375	6.08

**Operating Temperature:** -40°C to +65°C

**Storage:** Temperature 10°C to +50°C, RH<60%, Max. Humidity <70% RH

**Test Conditions:** +25°C

All parameters are measured according to the IEC 62813 standard.

Capacitance and ESR are measured with  $I(\text{mA}) = 8(C \cdot U_R)$

**Nominal Current:** 1C

**Peak Current (Max.):** 50C

**Leakage Current:** Measured after 72h at U<sub>R</sub>

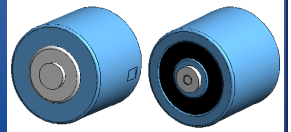


12117 Bee Caves Rd Bldg-3, Ste 200  
Bee Cave, TX 78738  
Ph: (512) 371-6159; Fax: (512) 351-8858  
For terms and conditions of sales, please visit:  
www.abracon.com

REVISION Initial Release :  
4/2/2026

ABRACON IS  
ISO9001-2015  
CERTIFIED

# High Capacitance Supercapacitors



**ADCP-E02R7S**

Request Samples



Check Inventory

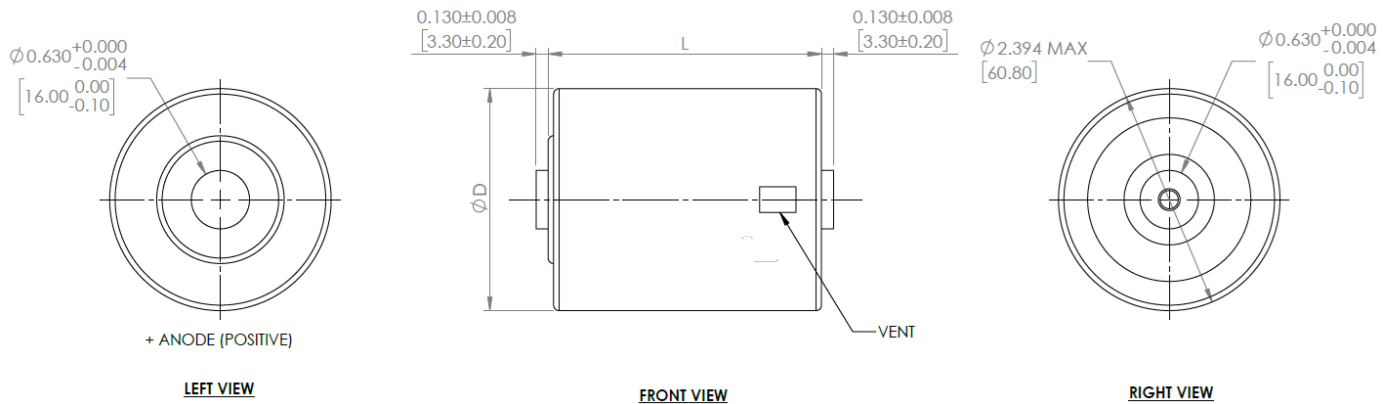


Various Sizes

RoHS/RoHS II Compliant

MSL Level = 2

## Mechanical Specifications



Part Number	Dimensions (ØD x L)	ØD (±1.5)	L (±0.3)
ADCP-E02R7SA128	60 x 75	60	75
ADCP-E02R7SA158	60 x 85	60	85
ADCP-E02R7SA208	60 x 105	60	105
ADCP-E02R7SA308	60 x 138	60	138

Dimensions: Inches [mm]

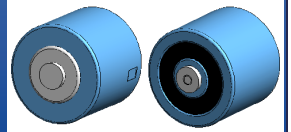


12117 Bee Caves Rd Bldg-3, Ste 200  
 Bee Cave, TX 78738  
 Ph: (512) 371-6159; Fax: (512) 351-8858  
 For terms and conditions of sales, please visit:  
[www.abracon.com](http://www.abracon.com)

REVISION Initial Release :  
 4/2/2026

ABRACON IS  
 ISO9001-2015  
 CERTIFIED

# High Capacitance Supercapacitors



ADCP-E02R7S

Request Samples



Check Inventory

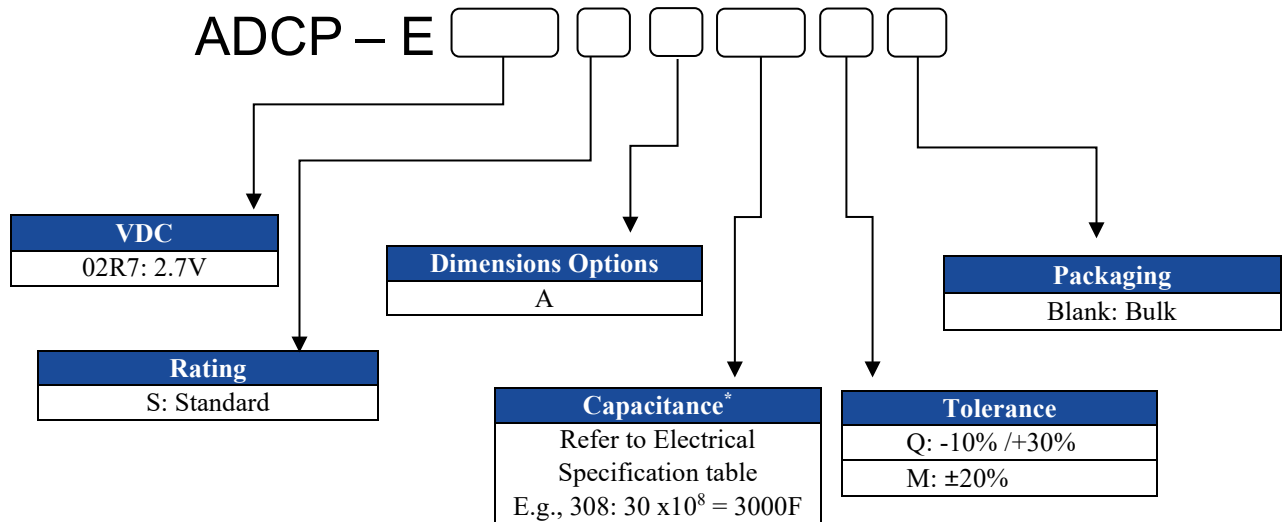


Various Sizes

RoHS/RoHS II Compliant

MSL Level = 2

## Part Number Identification



\*Only part numbers listed in the Electrical Specs table are available. For custom builds, please contact us.

## Part Marking



Example of the Markings of a 3000F 2.7V capacitor

Capacitance (F)

Rated Voltage (V)

Polarity (Refer to mechanical drawing to determine polarity)

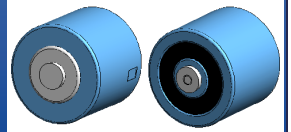


12117 Bee Caves Rd Bldg-3, Ste 200  
Bee Cave, TX 78738  
Ph: (512) 371-6159; Fax: (512) 351-8858  
For terms and conditions of sales, please visit:  
[www.abracon.com](http://www.abracon.com)

REVISION Initial Release :  
4/2/2026

ABRACON IS  
ISO9001-2015  
CERTIFIED

# High Capacitance Supercapacitors



ADCP-E02R7S

Request Samples



Check Inventory



Various Sizes

RoHS/RoHS II Compliant

MSL Level = 2

## Welding Method

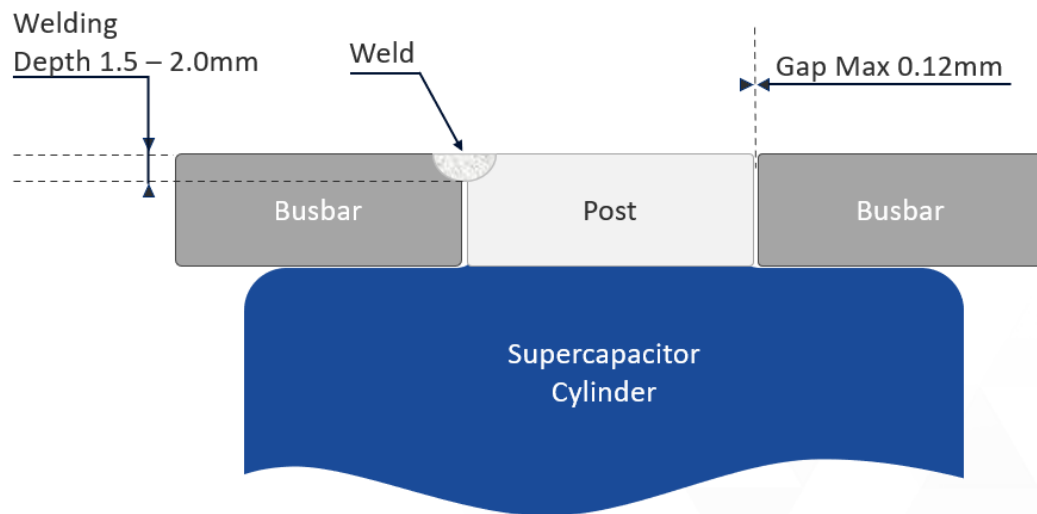
Pulsed laser welding is recommended using the following parameters.

Laser Energy: 2.5 – 5.5kW

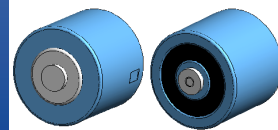
Minimum travel rate: 30mm/s

Capacitor Post Material: AW1070

Capacitor Body Temperature Max: 100°C < 2sec



# High Capacitance Supercapacitors



ADCP-E02R7S

Request Samples



Check Inventory



Various Sizes

RoHS/RoHS II Compliant

MSL Level = 2

## Packaging

Products are packaged in a carton containing multiple inner boxes.

### Inner Box (Example 25pcs):



Part Number	Pcs/Inner Box	Pcs/Carton [ # of Inner Boxes ]	Carton Length	Carton Width	Carton Height
ADCP-E02R7SA128	25	50 [2]	368	368	280
ADCP-E02R7SA158	25	50 [2]	368	368	280
ADCP-E02R7SA208	25	50 [2]	368	368	315
ADCP-E02R7SA308	25	25 [1]	368	368	206

## Transport of Product

This product is not subject to US DOT or IATA regulations UN3499 since maximum stored energy is below 10Wh and can be considered Non-Hazardous Goods. Please refer to the [Abracon | UN/IATA Transportation Guidelines](#) for more information.

**ATTENTION:** Abracon LLC's products are Commercial-Off-The-Shelf (COTS, which are designed, intended and validated for use in commercial, industrial and automotive applications. The customer is responsible for testing and verifying the performance of an Abracon solution to meet their system-level requirements.



12117 Bee Caves Rd Bldg-3, Ste 200  
Bee Cave, TX 78738  
Ph: (512) 371-6159; Fax: (512) 351-8858  
For terms and conditions of sales, please visit:  
[www.abracon.com](http://www.abracon.com)

REVISION Initial Release :  
4/2/2026

ABRACON IS  
ISO9001-2015  
CERTIFIED