

Product Summary (@T_A = +25°C)

P _{PK}	V _{RWM}
600W	5V to 170V

Description and Applications

Suitable to protect sensitive automotive circuits against surges defined in ISO7637-2 and against electrostatic discharges according to ISO10605.

Compliance with the following standards:

- ISO10605, C = 150pF, R = 330Ω:
 - 30kV (Air Discharge)
 - 30kV (Contact Discharge)
- ISO7637-2 (Note 4)
 - Pulse 1: V_s = -150V
 - Pulse 2a: V_s = +112V
 - Pulse 3a: V_s = -220V
 - Pulse 3b: V_s = +150V

Features and Benefits

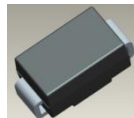
- 600W Peak Pulse Power Dissipation
- 5V to 170V Standoff Voltages
- Glass Passivated Die Construction
- Bi-directional Versions Available
- Excellent Clamping Capability
- Lead-Free Finish; RoHS Compliant (Notes 1 & 2)**
- Halogen and Antimony Free. "Green" Device (Note 3)**
- The SMA6J5.0(C)AQ–SMA6J170(C)AQ are suitable for automotive applications requiring specific change control; these parts are AEC-Q101 qualified, PPAP capable, and manufactured in IATF 16949 certified facilities.**

<https://www.diodes.com/quality/product-definitions/>

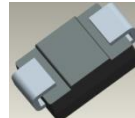
Mechanical Data

- Package: SMA
- Package Material: Molded Plastic.
UL Flammability Classification Rating 94V-0
- Moisture Sensitivity: Level 1 per J-STD-020
- Terminals: Lead Free Plating (Matte Tin Finish). Solderable per MIL-STD-202, Method 208 (63)
- Weight: 0.062 grams (Approximate)

SMA



Top View



Bottom View

Ordering Information (Note 5)

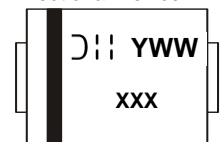
Orderable Part Number	Package	Packing	
		Qty.	Carrier
SMA6JX.X(C)AQ-13	SMA	5,000	Tape & Reel
SMA6JXX(C)AQ-13	SMA	5,000	Tape & Reel
SMA6JXXX(C)AQ-13	SMA	5,000	Tape & Reel

*X = Device Voltage, e.g., SMA6J15CAQ-13.

- Notes:
- EU Directive 2002/95/EC (RoHS), 2011/65/EU (RoHS 2) & 2015/863/EU (RoHS 3) compliant. All applicable RoHS exemptions applied.
 - See <https://www.diodes.com/quality/lead-free/> for more information about Diodes Incorporated's definitions of Halogen- and Antimony-free, "Green" and Lead-free.
 - Halogen- and Antimony-free "Green" products are defined as those which contain <900ppm bromine, <900ppm chlorine (<1500ppm total Br + Cl) and <1000ppm antimony compounds.
 - Not applicable to parts with standoff voltage lower than the average battery voltage (13.5V).
 - For packaging details, go to our website at <https://www.diodes.com/design/support/packaging/diodes-packaging/>.

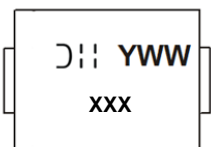
Marking Information

Cathode Band for Uni-Directional Device



Cathode —> Anode
Uni-directional

Bi-Directional Device



Bi-directional

xxx = Product Type Marking Code (See Page 3)

D11 = Manufacturers' Marking

YWW = Date Code Marking

Y = Last Digit of Year (ex: 5 for 2025)

WW = Week Code (01 to 53)

Maximum Ratings (@T_A = +25°C, unless otherwise specified.)

Characteristic	Symbol	Value	Unit
Peak Pulse Power Dissipation (Non-Repetitive Current Pulse Derated Above T _A = +25°C) (Note 6)	P _{PK}	600	W
Peak Power Derating Above +25°C	P _{DER}	4.8	W/°C

Thermal Characteristics

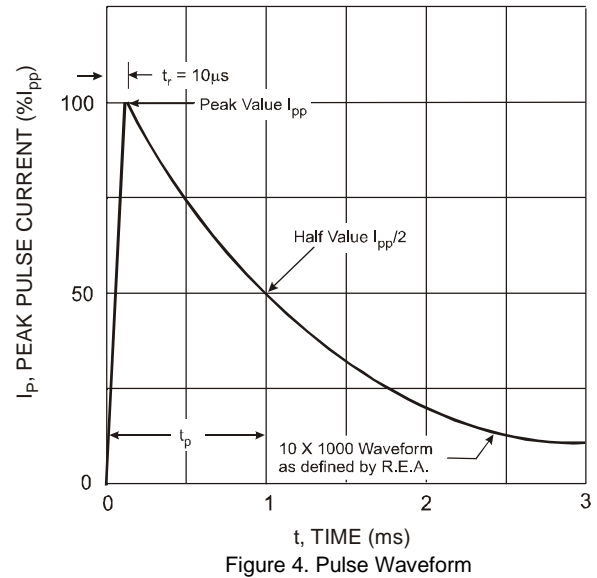
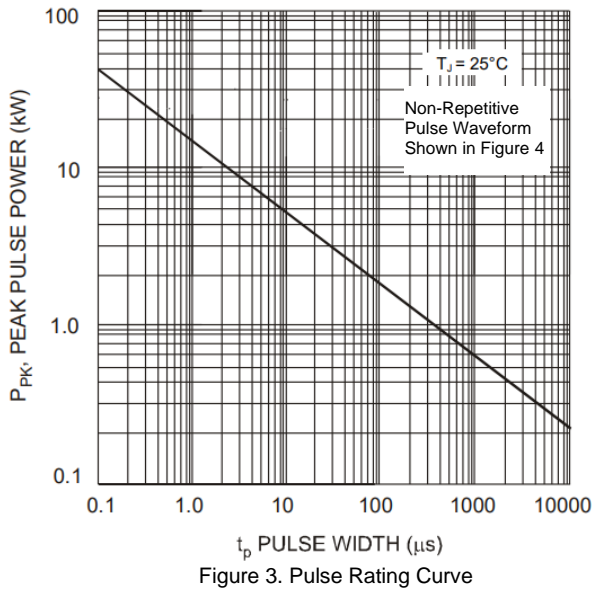
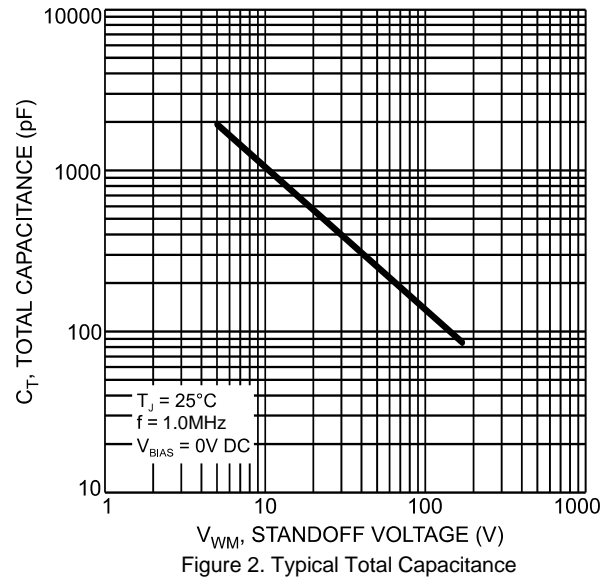
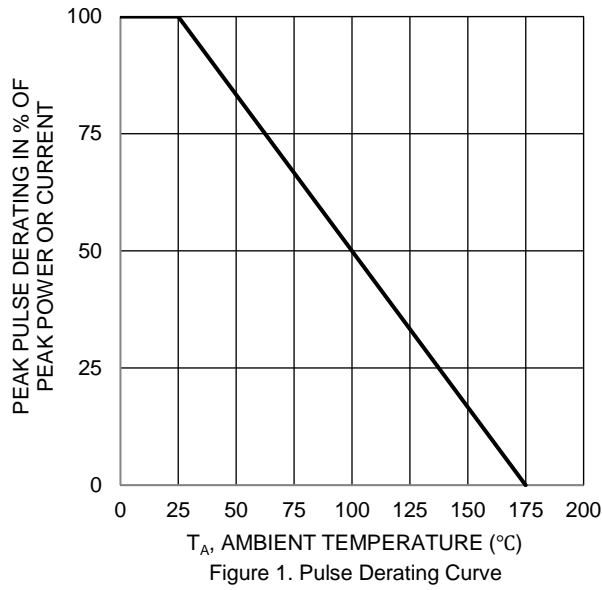
Characteristic	Symbol	Value	Unit
Operating Temperature Range	T _J	-55 to +175	°C
Storage Temperature Range	T _{STG}	-55 to +175	°C

Note: 6. Valid provided that terminals are kept at ambient temperature.

Electrical Characteristics (@T_A = +25°C, unless otherwise specified.)

Part Number (Note 7)	Reverse Standoff Voltage	Breakdown Voltage V _{BR} @ I _T (Note 8)		Test Current	Max Reverse Leakage @ V _{RWM} (Note 10)	Max Clamping Voltage @ I _{PP} (Note 9)	Max Peak Pulse Current	Marking Code	
	V _{RWM} (V)	Min (V)	Max (V)	I _T (mA)	I _R (μA)	V _C (V)	I _{PP} (A)	BI-	UNI-
SMA6J5.0(C)AQ	5.0	6.40	7.07	10	1600	9.2	65.2	AET	KET
SMA6J6.0(C)AQ	6.0	6.67	7.37	10	800	10.3	58.3	AGT	KGT
SMA6J6.5(C)AQ	6.5	7.22	7.98	10	500	11.2	53.6	ATT	KTT
SMA6J7.0(C)AQ	7.0	7.78	8.6	10	200	12.0	50.0	AMT	KMT
SMA6J7.5(C)AQ	7.5	8.33	9.21	1.0	100	12.9	46.5	APT	KPT
SMA6J8.0(C)AQ	8.0	8.89	9.83	1.0	50	13.6	44.1	ART	KRT
SMA6J8.5(C)AQ	8.5	9.44	10.4	1.0	20	14.4	41.7	AIT	KIT
SMA6J10(C)AQ	10.0	11.10	12.3	1.0	10	17.0	35.3	AXT	KXT
SMA6J13(C)AQ	13.0	14.40	15.9	1.0	0.5	21.5	27.9	BGT	LGT
SMA6J15(C)AQ	15.0	16.70	18.5	1.0	0.5	24.4	24.0	BMT	LMT
SMA6J18(C)AQ	18.0	20.00	22.1	1.0	0.5	29.2	20.5	BTT	LTT
SMA6J20(C)AQ	20.0	22.20	24.5	1.0	0.5	32.4	18.5	BVT	LVT
SMA6J22(C)AQ	22.0	24.40	27.0	1.0	0.5	35.5	16.9	BXT	LXT
SMA6J24(C)AQ	24.0	26.70	29.5	1.0	0.5	38.9	15.4	BZT	LZT
SMA6J26(C)AQ	26.0	28.90	31.9	1.0	0.5	42.1	14.2	CET	MET
SMA6J28(C)AQ	28.0	31.10	34.4	1.0	0.5	45.4	13.2	CGT	MGT
SMA6J30(C)AQ	30.0	33.30	36.8	1.0	0.5	48.4	12.4	CKT	MKT
SMA6J33(C)AQ	33.0	36.70	40.6	1.0	0.5	53.3	11.3	CMT	MMT
SMA6J36(C)AQ	36.0	40.00	44.2	1.0	0.5	58.1	10.3	CPT	MPT
SMA6J40(C)AQ	40.0	44.40	49.1	1.0	0.5	64.5	9.3	CRT	MRT
SMA6J43(C)AQ	43.0	47.80	52.8	1.0	0.5	69.4	8.6	CTT	MTT
SMA6J45(C)AQ	45.0	50.00	55.3	1.0	0.5	72.7	8.3	CVT	MVT
SMA6J48(C)AQ	48.0	53.30	58.9	1.0	0.5	77.4	7.7	CXT	MXT
SMA6J51(C)AQ	51.0	56.70	62.7	1.0	0.5	82.4	7.3	CZT	MZT
SMA6J54(C)AQ	54.0	60.00	66.3	1.0	0.5	87.1	6.9	DET	NET
SMA6J58(C)AQ	58.0	64.40	71.2	1.0	0.5	93.6	6.4	DGT	NGT
SMA6J60(C)AQ	60.0	66.70	73.7	1.0	0.5	96.8	6.2	DKT	NKT
SMA6J64(C)AQ	64.0	71.10	78.6	1.0	0.5	103.0	5.8	DNT	NNT
SMA6J70(C)AQ	70.0	77.80	86.0	1.0	0.5	113.0	5.3	DPT	NPT
SMA6J75(C)AQ	75.0	83.30	92.1	1.0	0.5	121.0	4.9	DRT	NRT
SMA6J78(C)AQ	78.0	86.70	95.8	1.0	0.5	126.0	4.7	DTT	NTT
SMA6J85(C)AQ	85.0	94.40	104	1.0	0.5	137.0	4.4	DVT	NVT
SMA6J90(C)AQ	90.0	100.0	111	1.0	0.5	146.0	4.1	DXT	NXT
SMA6J100(C)AQ	100.0	111.0	123	1.0	0.5	162.0	3.7	DZT	NZT
SMA6J110(C)AQ	110.0	122.0	135	1.0	0.5	177.0	3.4	EET	PET
SMA6J120(C)AQ	120.0	133.0	147	1.0	0.5	193.0	3.1	EGT	PGT
SMA6J130(C)AQ	130.0	144.0	159	1.0	0.5	209.0	2.9	EKT	PKT
SMA6J150(C)AQ	150.0	167.0	185	1.0	0.5	243.0	2.5	EPT	PPT
SMA6J160(C)AQ	160.0	178.0	197	1.0	0.5	259.0	2.3	ERT	PRT
SMA6J170(C)AQ	170.0	189.0	209	1.0	0.5	275.0	2.2	ETT	PTT

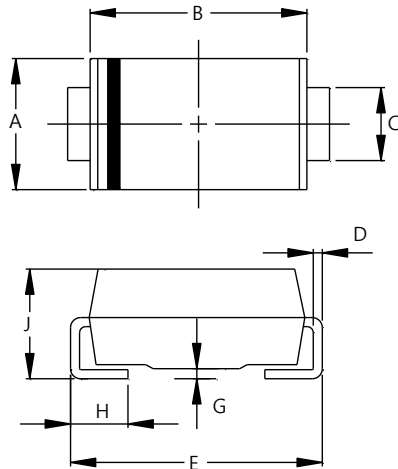
- Notes:
- Suffix C denotes bi-directional devices.
 - V_{BR} measured with I_T current pulse = 10ms to 15ms.
 - Per 10 × 1000μs waveform. See Figure 4.
 - The I_R limit is double for bi-directional devices.



Package Outline Dimensions

Please see <http://www.diodes.com/package-outlines.html> for the latest version.

SMA

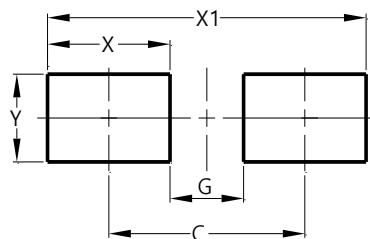


SMA		
Dim	Min	Max
A	2.29	2.92
B	4.00	4.60
C	1.27	1.63
D	0.15	0.31
E	4.80	5.59
G	0.05	0.20
H	0.76	1.52
J	1.96	2.40
All Dimensions in mm		

Suggested Pad Layout

Please see <http://www.diodes.com/package-outlines.html> for the latest version.

SMA



Dimensions	Value (in mm)
C	4.00
G	1.50
X	2.50
X1	6.50
Y	1.70

IMPORTANT NOTICE

1. DIODES INCORPORATED (Diodes) AND ITS SUBSIDIARIES MAKE NO WARRANTY OF ANY KIND, EXPRESS OR IMPLIED, WITH REGARDS TO ANY INFORMATION CONTAINED IN THIS DOCUMENT, INCLUDING, BUT NOT LIMITED TO, THE IMPLIED WARRANTIES OF MERCHANTABILITY, FITNESS FOR A PARTICULAR PURPOSE OR NON-INFRINGEMENT OF THIRD PARTY INTELLECTUAL PROPERTY RIGHTS (AND THEIR EQUIVALENTS UNDER THE LAWS OF ANY JURISDICTION).
2. The Information contained herein is for informational purpose only and is provided only to illustrate the operation of Diodes' products described herein and application examples. Diodes does not assume any liability arising out of the application or use of this document or any product described herein. This document is intended for skilled and technically trained engineering customers and users who design with Diodes' products. Diodes' products may be used to facilitate safety-related applications; however, in all instances customers and users are responsible for (a) selecting the appropriate Diodes products for their applications, (b) evaluating the suitability of Diodes' products for their intended applications, (c) ensuring their applications, which incorporate Diodes' products, comply the applicable legal and regulatory requirements as well as safety and functional-safety related standards, and (d) ensuring they design with appropriate safeguards (including testing, validation, quality control techniques, redundancy, malfunction prevention, and appropriate treatment for aging degradation) to minimize the risks associated with their applications.
3. Diodes assumes no liability for any application-related information, support, assistance or feedback that may be provided by Diodes from time to time. Any customer or user of this document or products described herein will assume all risks and liabilities associated with such use, and will hold Diodes and all companies whose products are represented herein or on Diodes' websites, harmless against all damages and liabilities.
4. Products described herein may be covered by one or more United States, international or foreign patents and pending patent applications. Product names and markings noted herein may also be covered by one or more United States, international or foreign trademarks and trademark applications. Diodes does not convey any license under any of its intellectual property rights or the rights of any third parties (including third parties whose products and services may be described in this document or on Diodes' website) under this document.
5. Diodes' products are provided subject to Diodes' Standard Terms and Conditions of Sale (<https://www.diodes.com/about/company/terms-and-conditions/terms-and-conditions-of-sales/>) or other applicable terms. This document does not alter or expand the applicable warranties provided by Diodes. Diodes does not warrant or accept any liability whatsoever in respect of any products purchased through unauthorized sales channel.
6. Diodes' products and technology may not be used for or incorporated into any products or systems whose manufacture, use or sale is prohibited under any applicable laws and regulations. Should customers or users use Diodes' products in contravention of any applicable laws or regulations, or for any unintended or unauthorized application, customers and users will (a) be solely responsible for any damages, losses or penalties arising in connection therewith or as a result thereof, and (b) indemnify and hold Diodes and its representatives and agents harmless against any and all claims, damages, expenses, and attorney fees arising out of, directly or indirectly, any claim relating to any noncompliance with the applicable laws and regulations, as well as any unintended or unauthorized application.
7. While efforts have been made to ensure the information contained in this document is accurate, complete and current, it may contain technical inaccuracies, omissions and typographical errors. Diodes does not warrant that information contained in this document is error-free and Diodes is under no obligation to update or otherwise correct this information. Notwithstanding the foregoing, Diodes reserves the right to make modifications, enhancements, improvements, corrections or other changes without further notice to this document and any product described herein. This document is written in English but may be translated into multiple languages for reference. Only the English version of this document is the final and determinative format released by Diodes.
8. Any unauthorized copying, modification, distribution, transmission, display or other use of this document (or any portion hereof) is prohibited. Diodes assumes no responsibility for any losses incurred by the customers or users or any third parties arising from any such unauthorized use.
9. This Notice may be periodically updated with the most recent version available at <https://www.diodes.com/about/company/terms-and-conditions/important-notice>

The Diodes logo is a registered trademark of Diodes Incorporated in the United States and other countries.
All other trademarks are the property of their respective owners.
© 2025 Diodes Incorporated. All Rights Reserved.

www.diodes.com