

M20E M.2 10GbE



The future of high-speed networking

Overview

This tiny M.2 key E (2230/2242) add-on card is designed to seamlessly elevate your cameras performance and to enable the use of 5 or 10 GigE Vision cameras.

Features

- Based on Realtek RTL8127
- Realtek driver tested with the NVIDIA compute modules
- Designed and manufactured in Germany



Technical specification

Feature	Description
Module compatibility	Orin NX/AGX and more
Connector	M.2 key E 2230/2242
Interface	PCIe x1 (no USB)
PicoBlade (10 pin)	For RJ45 or X-Code
Ethernet	12 pin FPC
Power requirements	< 1.5W
PoE+ (802.3at Type 2) PD or PSE	Optional with use of external module (4 pin JST-GH)
Size	22mm x 30/42mm
Driver	Realtek driver for Linux, Windows and more
Model number	38708

Variations

SKU	Part
70827	M20E M.2 GbE
70827-Kit	M20E kit

M20E Kit includes

SKU	Part
70827	M20E M.2 GbE
70927	BE323 Ethernet adapter board
42458-150	Ethernet cable 150mm (1:1)

Accessories

SKU	Part
70436	BE322 Amphenol IP67 RJ45 Ethernet adapter
70927	BE323 RJ45 Ethernet adapter
38577-M12	BS441 M12 X-Code Ethernet adapter*

*requires a pico blade to JST-GH adapter



BE322 IP67 RJ45 adapter



BE323 RJ45 adapter



BS441 M12 X-Code adapter

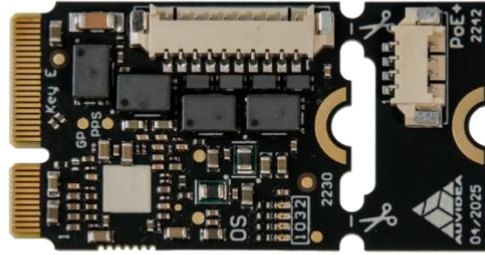


10 GigaBit Ethernet

M20E M.2 10GbE



M20E top view



M20E bottom view

