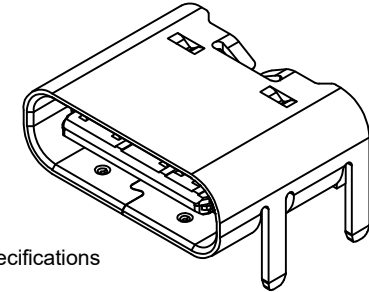


Recommended PCB Layout
Tolerance: $\pm 0.05\text{mm}$

■ Solder Area □ Component Outline

Pin	Signal	Mating Sequence
A5	CC1	Second
A9	V _{bus}	First
A12	GND	First
B5	CC2	Second
B9	V _{bus}	First
B12	GND	First
SHELL	GND	



Specifications

Material

Insulator: LCP, UL 94V-0, Black
Contact: Copper Alloy
Shell: Stainless Steel
Mid plate: Stainless Steel

Plating

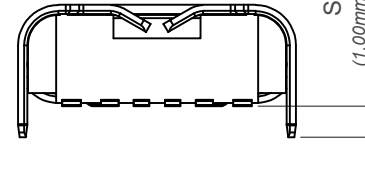
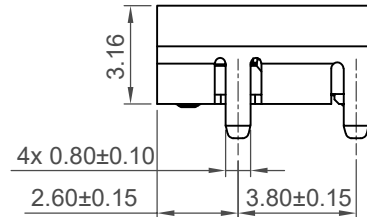
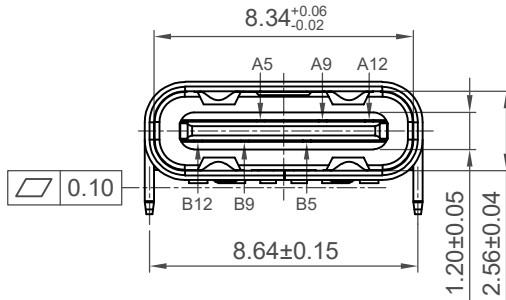
Contact:
Contact Area: Gold
Solder Tails: Gold
Underplating: $30\mu\text{m}$ min. Nickel
Shell: $30\mu\text{m}$ min. Nickel
Mid plate: Clear

Electrical

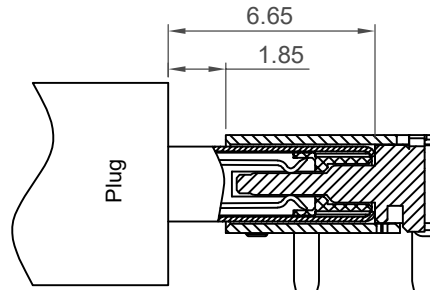
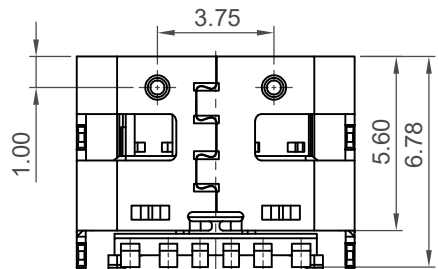
Current Rating: 3.00A collectively for V_{bus} pins
4.25A collectively for GND pins
1.25A for A5/B5 pins
Voltage Rating: 48V DC
Contact Resistance: 40m Ω max initial.
50m Ω max after test
Dielectric Withstanding Voltage: 100V AC
Insulation Resistance 100M Ω min

Mechanical & Environmental

Operating Temperature: -30°C to $+85^{\circ}\text{C}$
Mating Force: 5 to 20 N.
Unmated Force: 6 to 20 N after test
Durability: 10,000 cycles



S ± 0.25
(1.00mm stake shown)



Plug and Receptacle Mating View

Ordering Grid

USB4970 - 00 - A - XXXX




Request Samples
and Quotation

Packing Options

A = Tape & Reel (1000 per reel)

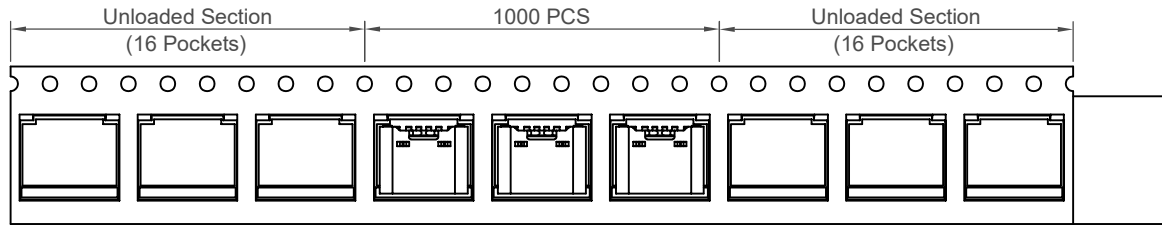
Shell Stake Length "S"

Blank = 1.00mm
0190 = 1.90mm

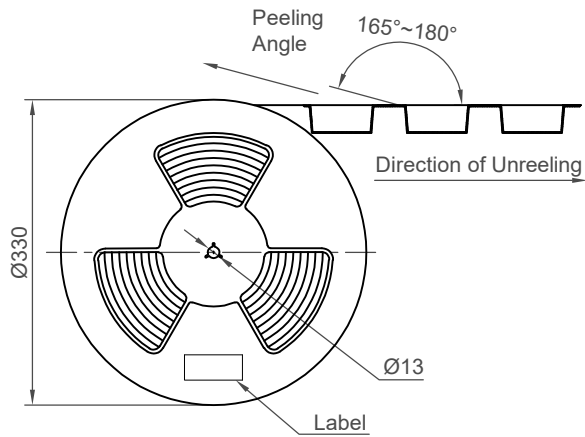
Part Number		Product Description				 www.gct.co
USB4970		Type C Receptacle, Horizontal, SMT, For Power Charging Only				
Drawing Date						
8th December 2025						
By	CC	Tolerances (Except as Noted)		Units:	<p>This drawing is confidential and copyright of Global Connector Technology, Ltd (GCT). This drawing must not be copied or disclosed without written consent. E & OE</p> <p>Not to Scale</p> <p>Drawn By CC</p> <p>Sheet No. 1/2</p>	
		Length	Angle	Metric (mm)		
Detail	Drawing Release	X.X ± 0.30		 		
Revision	A	X.XX ± 0.25	-			
Date	08/12/25	X.XXX ± 0.10				

GCT
www.gct.co

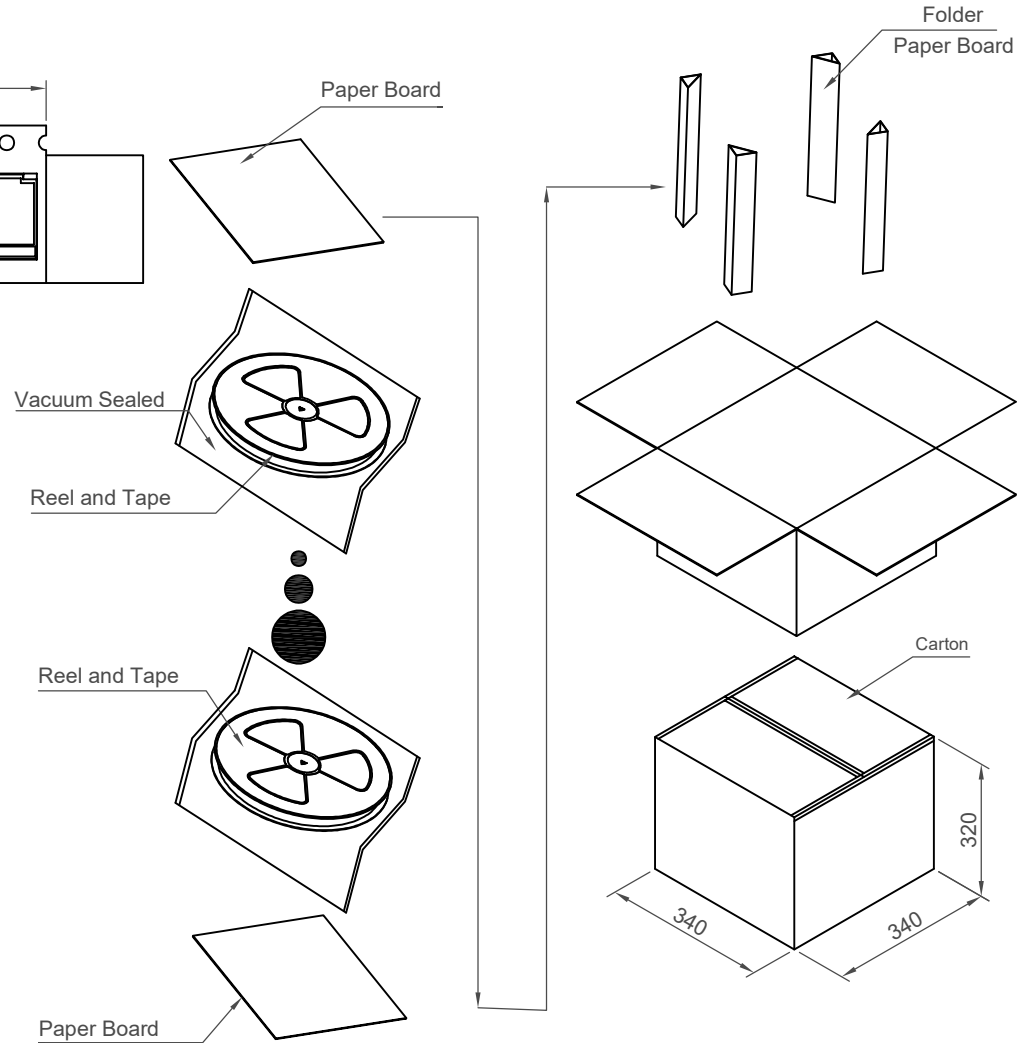
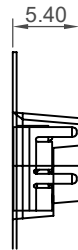
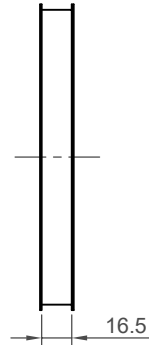
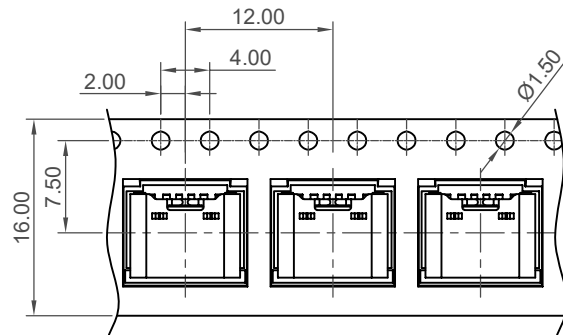
H
G
F
E
D
C
B
A



Direction of Unreeling



Direction of Unreeling



Pcs / Reel	Reels / Carton	Total Quantity
1000	13	13,000 pcs

Part Number		Product Description	
USB4970		Type C Receptacle, Horizontal, SMT, For Power Charging Only	
Drawing Date			
8th December 2025			
By	CC	Tolerances (Except as Noted)	Units:
		Length	Metric (mm)
Detail	Drawing Release	Angle	
Revision	A	-	-
Date	08/12/25	-	-
		3rd Angle Projection	
		This drawing is confidential and copyright of Global Connector Technology, Ltd (GCT). This drawing must not be copied or disclosed without written consent. E & OE	
		Not to Scale	Drawn By CC
		Sheet No. 2/2	

GCT
www.gct.co