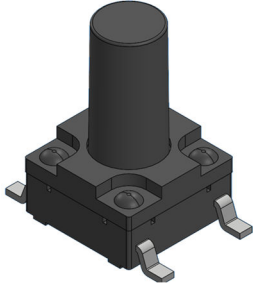


PRODUCT SPECIFICATION

Part Number	SWT7420			Rev	A		Date	22/07/25
Product Description	Tactile Switch, 6.0 X 6.0mm, Top Actuated, Gull Wing, SPST – NO, IP6K7						Page	1
Doc Number	SWT7420	Prepared	KY	Checked	CC	Approved	PH	



Features:

Outline: 6.0 X 6.0mm

Profile Height: 9.50mm

Actuated Orientation: Top Actuated

Lead Type: Gull Wing

Specification:

Material

Housing: PPA, Black

Button: PPA, Black

Terminal: Brass

Contact: Stainless Steel

Cover: PPA Black

Gasket: Rubber, Black

Electrical

Voltage & Current Rating:

12V DC, 50mA.

Contact Resistance: 100mΩ Max.

Dielectric Withstanding Voltage: 250V AC

Insulation Resistance: 100MΩ Min.

Mechanical & Environmental

Operating Temperature: -25°C to +85°C

Operating Force: 350±100gf

Travel: 0.30±0.10mm

Durability: 100,000 cycles

Ingress Protection Rating: IP6K7

Solder Tails Co-planarity: 0.10mm Max.

Plating

Terminal: Silver Plated

Contact: Silver Plated

Ordering Grid:

SWT7420	0950	35	G	S	A	Request Samples and Quotation
Profile Height 0950 = 9.50mm	Operating Force 35 = 350±100gf	Lead Type G= Gull wing	Contact Plating S = Silver	Packing Options A = Tape & Reel (500pcs per reel)		

PRODUCT SPECIFICATION

Part Number	SWT7420			Rev	A		Date	22/07/25
Product Description	Tactile Switch, 6.0 X 6.0mm, Top Actuated, Gull Wing, SPST – NO, IP6K7						Page	2
Doc Number	SWT7420	Prepared	KY	Checked	CC	Approved	PH	

Reflow Soldering Profile:

Pb-free reflow profile requirements

Parameter	Reference	Specification
Average temperature gradient in preheating		2.5°C/s
Soak time	t _{soak}	2-3 minutes
Time above 217°C	t ₁	60 s
Time above 230°C	t ₂	50 s
Time above 250°C	t ₃	3 s
Peak temperature in reflow	T _{peak}	255°C (–0/+5°C)
Temperature gradient in cooling		Max -5°C/s

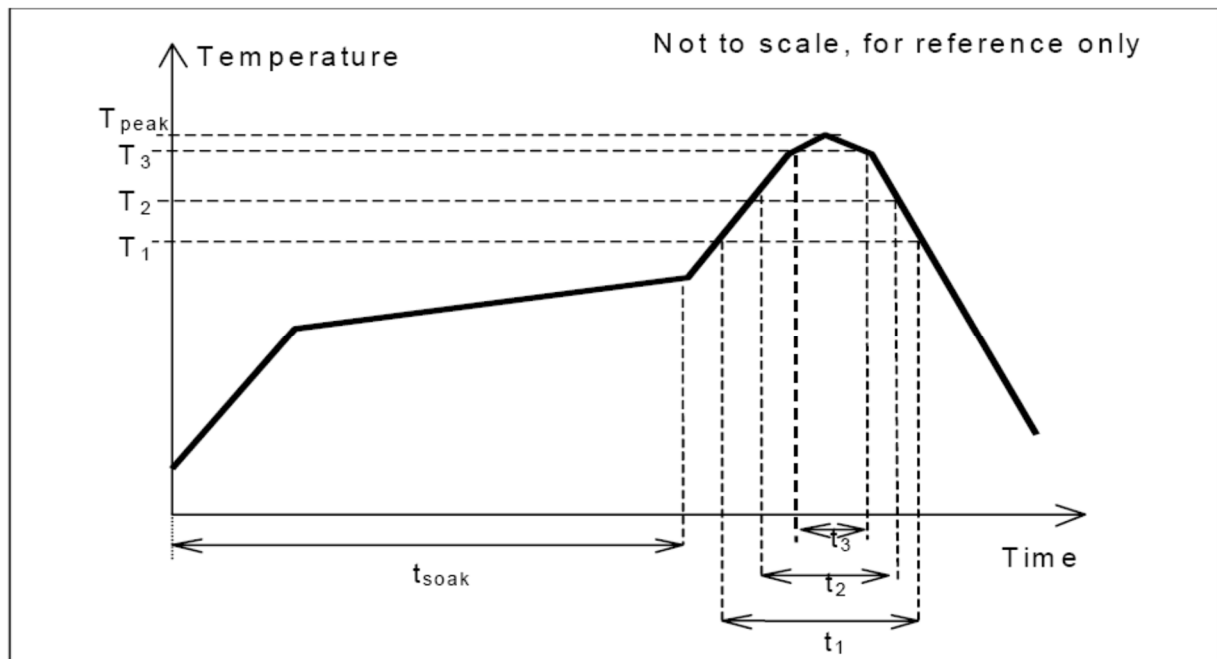


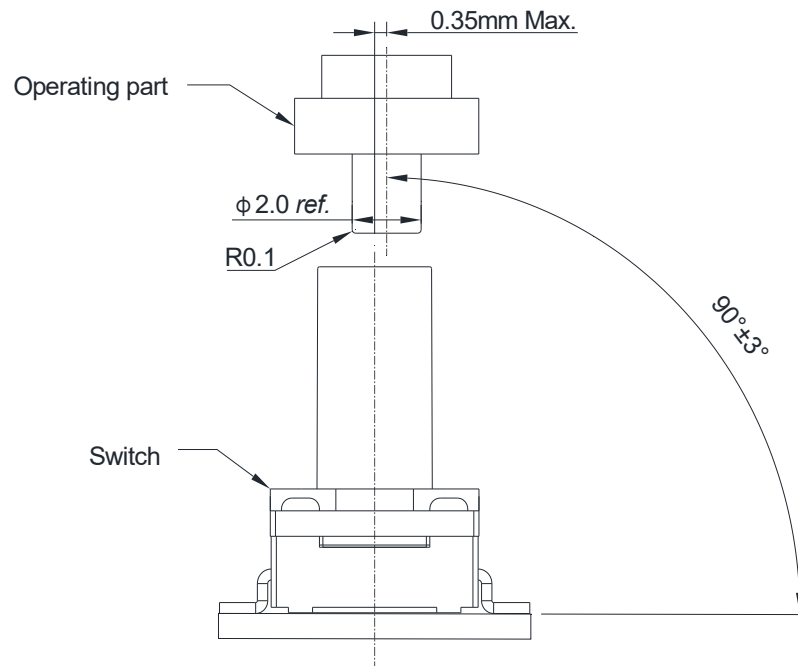
Fig. 1.0, this profile is the minimum requirement for evaluating soldering heat resistance of components. Heat transfer method used for reflow soldering is hot air convection. The actual air temperatures used to achieve the specified profile is higher and largely dependent on the reflow equipment.

PRODUCT SPECIFICATION

Part Number	SWT7420			Rev	A		Date	22/07/25
Product Description	Tactile Switch, 6.0 X 6.0mm, Top Actuated, Gull Wing, SPST – NO, IP6K7						Page	3
Doc Number	SWT7420	Prepared	KY	Checked	CC	Approved	PH	

Precaution for Operating:

1. Deviation of operating part from the centre axis of the switch shall be within 0.35mm.
2. Allowable operating angle: 90 ± 3 degrees.
3. Do not overload and shock the switch.
4. Avoid pressing on the button with sharp objects.
5. Cleaning after product soldering is not allowed.
6. Avoid switching on for a long time.



Recommended Operating Conditions

Precaution for Handling and Storage:

1. Products are vacuum sealed in plastic bag with desiccant.
2. Recommended storage conditions: -20 to $+50^\circ\text{C}$, 20% to 85% humidity.
3. Avoid exposing to corrosive gas, direct sunlight.
4. After the packaging is opened, use the products as quickly as possible.
5. Products that have not been used up must be vacuum sealed in plastic bag with desiccant.

PRODUCT SPECIFICATION

Part Number	SWT7420			Rev	A		Date	22/07/25
Product Description	Tactile Switch, 6.0 X 6.0mm, Top Actuated, Gull Wing, SPST – NO, IP6K7						Page	4
Doc Number	SWT7420	Prepared	KY	Checked	CC	Approved	PH	

Revision details:

Revision	Information	Page	Release Date
0.1	First draft	-	17/06/2025
0.2	Update 3D view	1	02/07/2025
A	First Release	-	22/07/2025