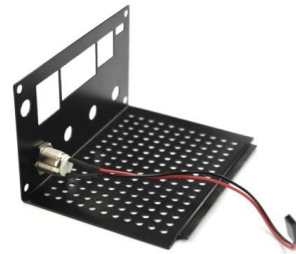


Jetson Nano Case Install Manual

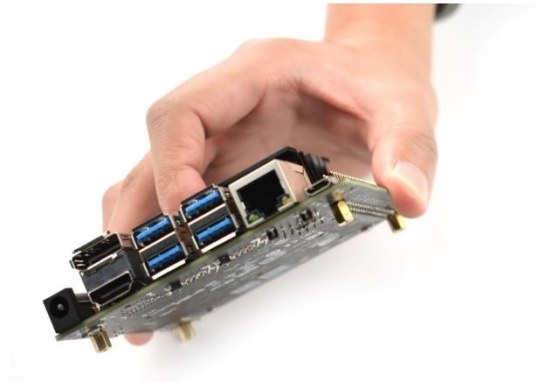
1. Firstly, install the power switch to the corresponding hole, as shown in the figure below:



2. Next, install the reset switch to the corresponding holes, shown as below:



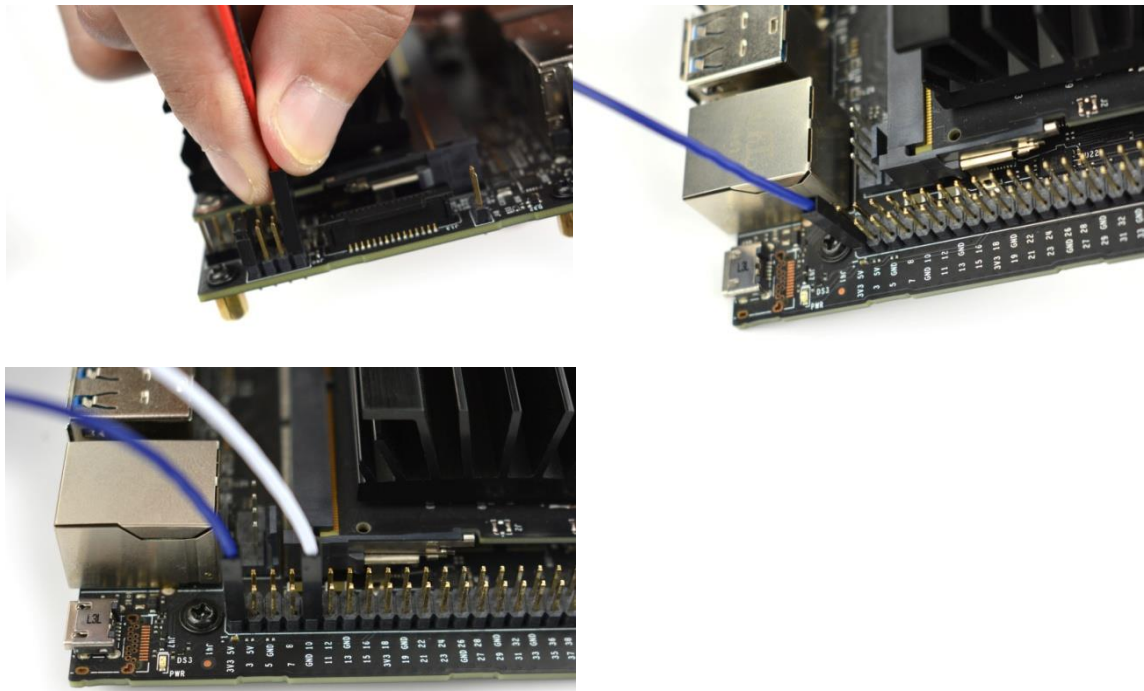
3. Then, install 4 pads and 4 screws to 4 holes in Jetson Nano board.



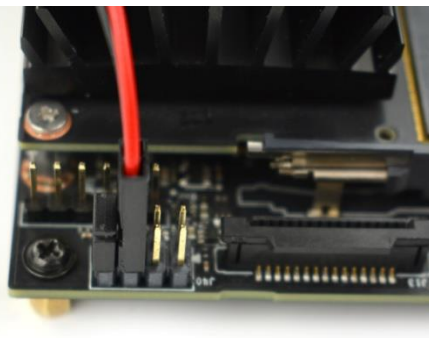
4. Plug the short-circuit cap to the position marked with "AUTO ON" to ban from powering ON automatically.



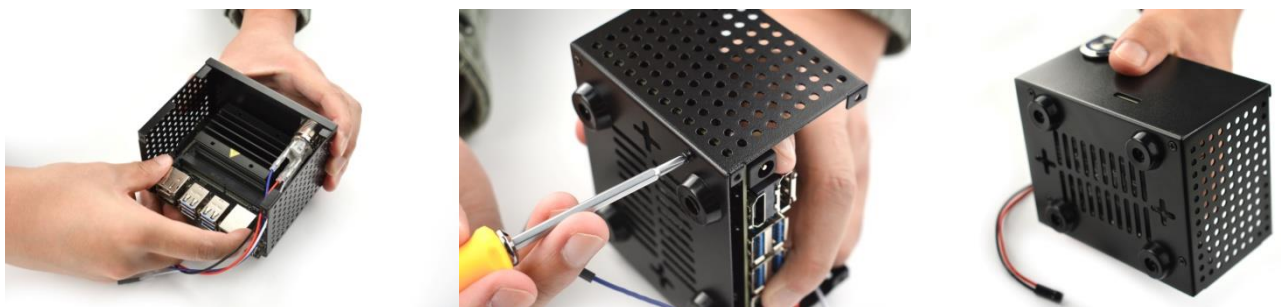
Plug the **RED** wire and the **Black** wire that control the power to pin "ON" in J40, and plug the **Blue** wire to "3.3V" and the **White** wire to "GND" in J41.



Plug the RESET **Red** wire and **Black** wire to J40 "RST" pin.



5. Put the Jetson Nano board into the outer case, get the pads and 4 holes lined up properly. Then fix the development board to the case.



6. Finally, close the case cover, fix it with 4 screws. And the case installation is accompanied.

