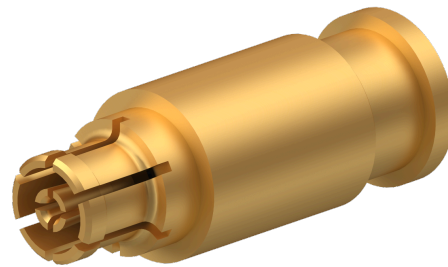


COAXIAL CONNECTOR, SMPM, 50 Ohm, Straight cable jack (female)

21_SMPM-50-2-2/111_N

Properties

- Best performance-to-price ratio
- Excellent RF performance up to 65 GHz
- Small size, compact form factor
- Snap-on coupling mechanism with full detent and smooth bore
- Board-to-board solutions with bullets for axial and radial float

**Product configuration**

Interface type	Gender	Standard
SMPM	jack	MIL-STD-348B

Interface and material data

Piece parts	Material	Plating
Centre contact	Copper Beryllium Alloy	SUCOPRO Plating
Outer conductor	Copper Beryllium Alloy	SUCOPRO Plating
Insulator	PTFE (Polytetrafluoroethylene)	

Electrical data

Impedance	50 Ω
Interface frequency	65 GHz

Mechanical data

Weight	0.39 g
Mating cycles	500
Cable entry centre contact	plugged
Cable entry outer contact	soldered

Engagement / Disengagement force

	Engagement	Engagement	Disengagement	Disengagement
Interface class	Full detent	Smooth bore	Full detent	Smooth bore
Interface force typical	20 N	11 N	29 N	6.7 N

Interface class	The force is determined by the counterpart
Interface force typical	

COAXIAL CONNECTOR, SMPM, 50 Ohm, Straight cable jack (female)

21_SMPM-50-2-2/111_N

Environmental data	
Operation temperature	-65 °C ... 165 °C

Material compliance			
Item number	Directive / Regulation	Rating	Exemptions / Details
85257665	RoHS 2011/65/EU and (EU) 2015/863	Compliant with exemption	6c
	REACH 1907/2006 Article 33 SVHC	Contains one or more SVHC >0,1%	CAS: 7439-92-1 Lead
85274830	RoHS 2011/65/EU and (EU) 2015/863	Compliant with exemption	6c
	REACH 1907/2006 Article 33 SVHC	Contains one or more SVHC >0,1%	CAS: 7439-92-1 Lead

Ordering Information Table		
Item number	Item description	Packaging type
85257665	21_SMPM-50-2-2/111_NE	Single
85274830	21_SMPM-50-2-2/111_NH	Bulk 100 pcs

Suitable cables	
Cable group	Y3 - 2 mm / 50 Ohm Y16 - 2 mm / 50 Ohm
Suitable cables	SR_86_AL_TP_M17 SUCOFORM_86

Additional Information	
Remarks	The values provided are typical and may vary depending on factors such as the mating connector, cable type, and assembly condition. Mating force and mating cycles are determined by the mating connector (full detent or smooth bore). Mating cycles: full detent: 100 smooth bore: 500
Only as assembly	No

HUBER+SUHNER is certified by ISO 9001, ISO 14001, ISO 45001, IATF 16949, AS/EN 9100 and ISO/TS 22163-IRIS. Waiver: Facts and figures herein are for information only and do not represent any warranty of any kind.
DOCUMENT PIM-P60503 / Date of publication: 05.12.2025 / uncontrolled copy