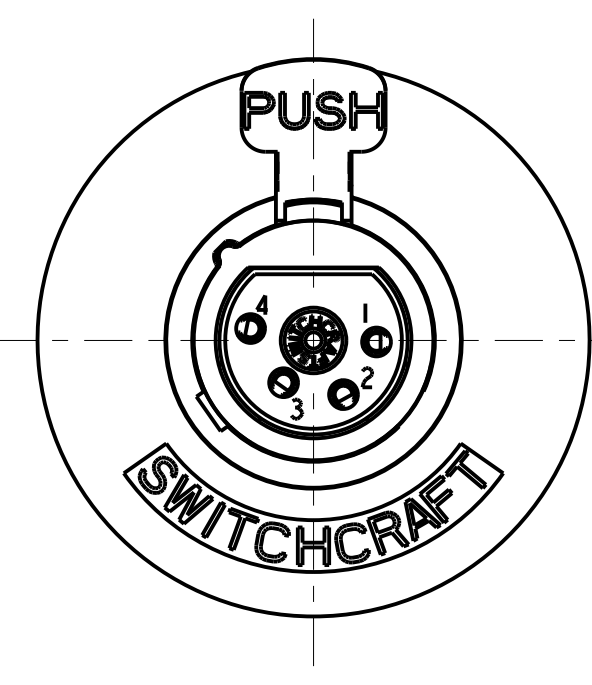
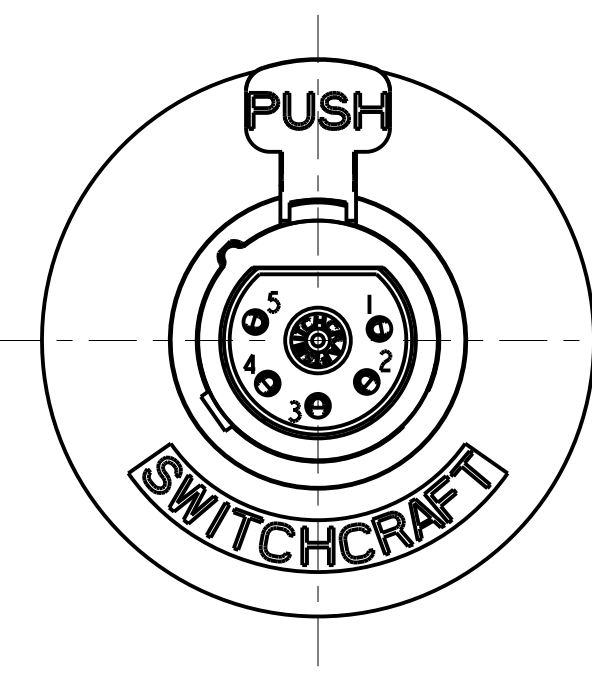


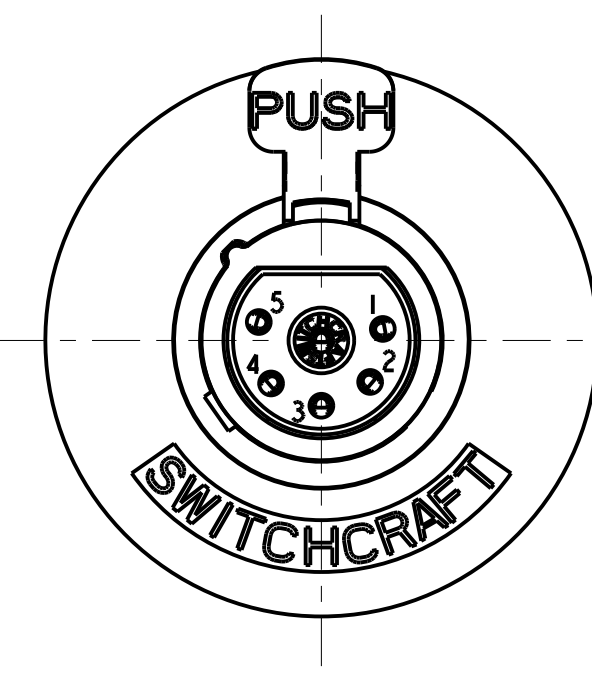
3 PIN



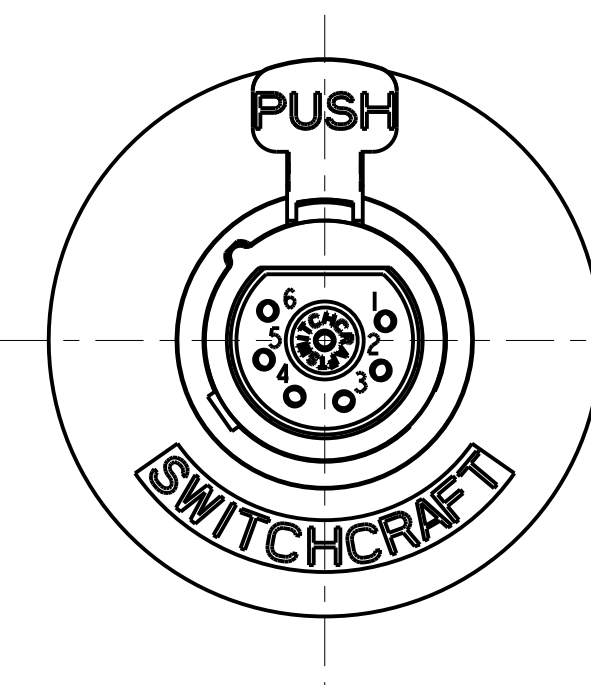
4 PIN



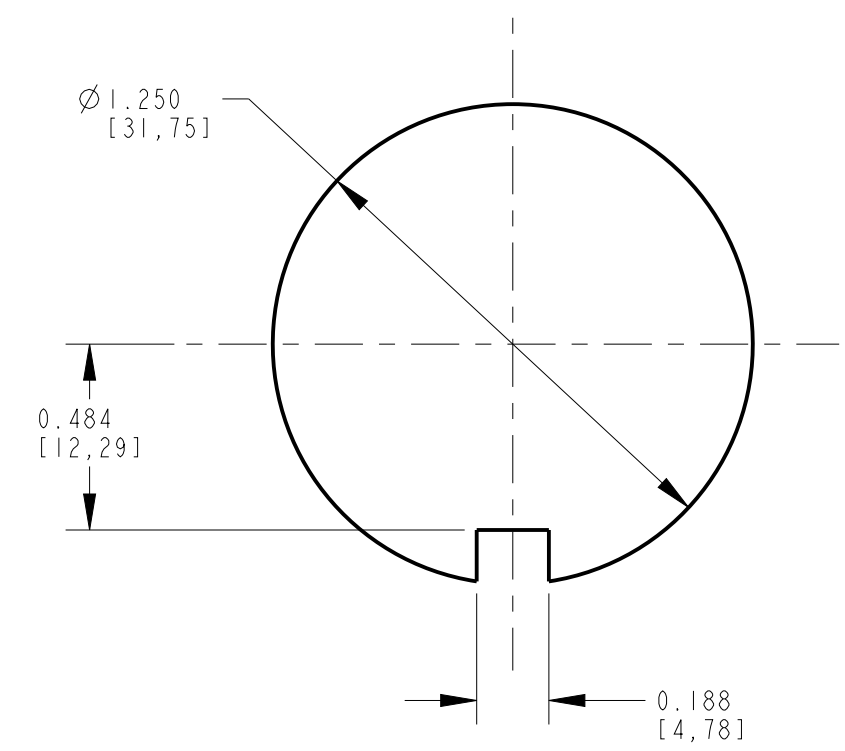
5 PIN



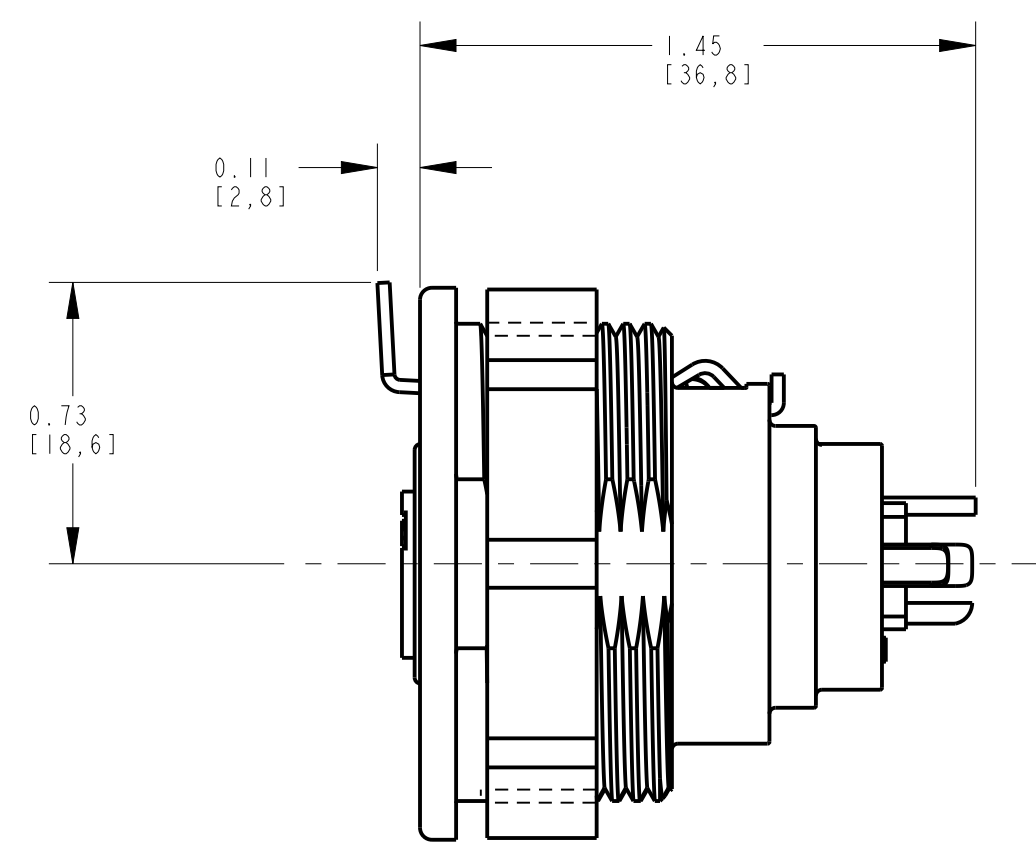
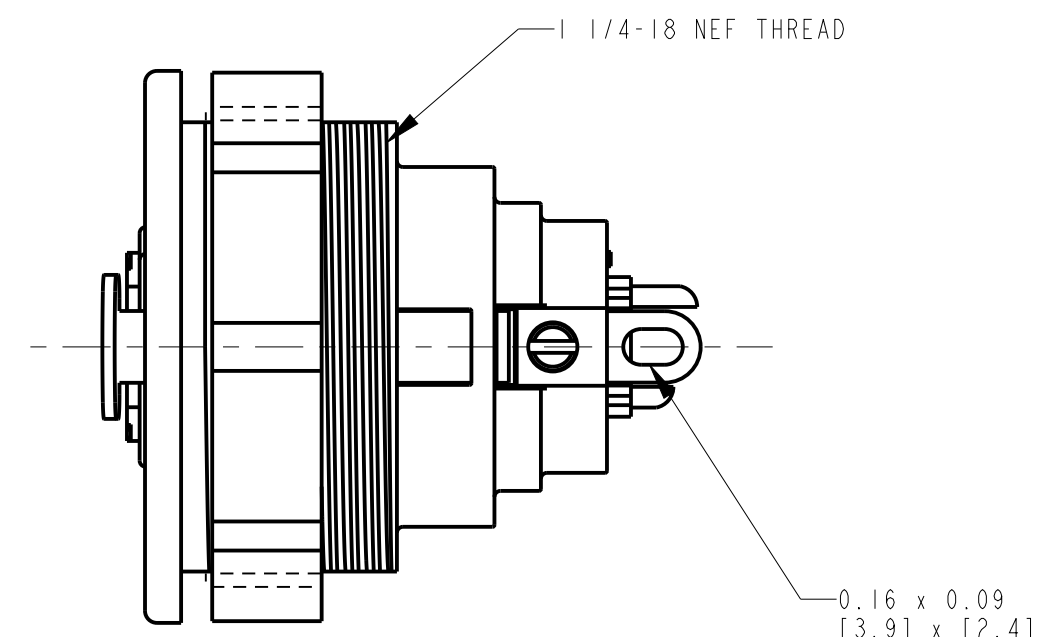
6 PIN



7 PIN



RECOMMENDED PANEL CUT-OUT

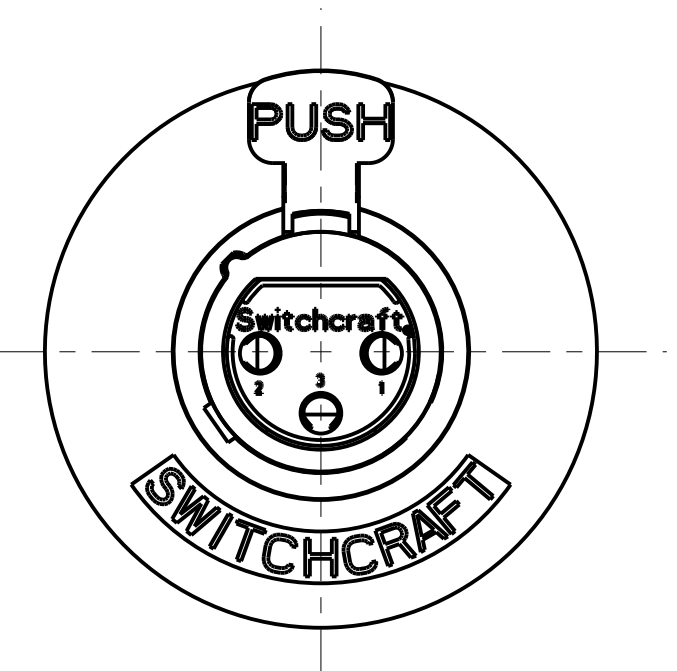


**STANDARD SERIES**

SCREW - STAINLESS STEEL  
SHELL - STAINLESS STEEL  
LATCH BUTTON - ZINC, NICKEL PLATED  
INSULATOR - POLYESTER, GREEN OR BLACK  
SOLDER TERMINAL - BRASS, ELECTRO TIN  
LATCH SPRING - STAINLESS STEEL  
CONTACT PIN - PHOSPHOR BRONZE, SILVER PLATED  
HOUSING - ZINC  
NUT - ZINC, NICKEL PLATED  
RELEASE LEVER - STEEL NICKEL PLATED

HOUSING FINISH: SEE NOTE 2  
BLANK = NICKEL PLATE (STANDARD)  
BX = BLACK CHROME, RoHS

NO. OF CONTACTS:  
3 = 3 CONTACTS  
4 = 4 CONTACTS  
5 = 5 CONTACTS  
6 = 6 CONTACTS  
7 = 7 CONTACTS



- NOTES:**
- ALL DIMENSIONS REF. UNLESS OTHERWISE SPECIFIED.
  - BLACK HOUSING AND INSERT WITH SATIN NICKEL PLATED LATCH.
  - THIS PRODUCT IS RoHS COMPLIANT.

REV	ECO NUMBER	DATE	BY	APVD
N	28763	08-27-25	PC	TJK
M	28302	07-08-20	PC	TJK
L	26158	10-4-06	TO	TJK
K	ECO #22895	9-17-99	DA	RB
J	20627	2-1-96	SG	SG

REVISIONS

★ STAR SYMBOL DENOTES CRITICAL DIMENSION

UNLESS OTHERWISE SPECIFIED

1. ALL DIMENSIONS IN INCHES  
- TWO PLACE DECIMALS ±0.01  
- THREE PLACE DECIMALS ±0.005  
- FRACTIONAL DIMENSIONS ±1/64  
- ANGLES ±1°  
- ALL DIA. CONCENTRIC WITHIN 0.005 T.I.R.

2. FEATURES ON THE SAME CENTER LINE MUST BE ALIGNED WITHIN ±0.002

3. REMOVE ALL BURRS

DO NOT SCALE DRAWING

THIS DRAWING DESCRIBES A DESIGN CONSIDERED PROPRIETARY IN NATURE, DEVELOPED AND MANUFACTURED BY SWITCHCRAFT INC. AND IS RELEASED ON A CONFIDENTIAL BASIS FOR IDENTIFICATION PURPOSES ONLY.

SIZE	WIDTH	MULT	LBS/M	TEMPER
FINISH				
SPEC No.				
FIRST USED ON		SCALE 2:1		
DATE DRAWN	BY	CHKD	APVD	
11-Dec-93	SG	AA	GHJ	
NAME				
B SERIES FEMALE OG, RoHS				

**Switchcraft®**

SHEET 1 OF 1

PART No. B\_F SERIES

REV N