

8

7

6

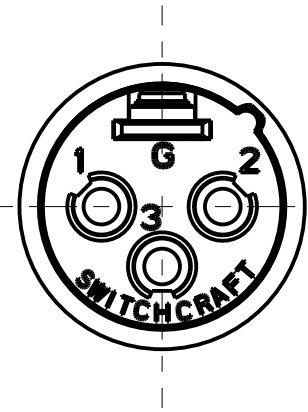
5

4

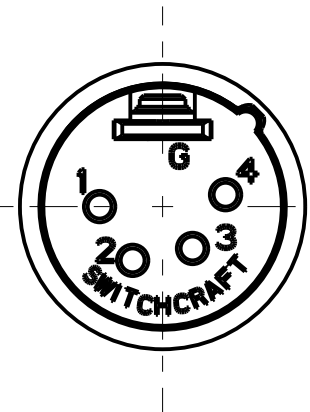
3

2

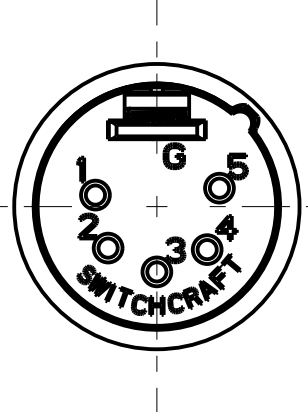
1



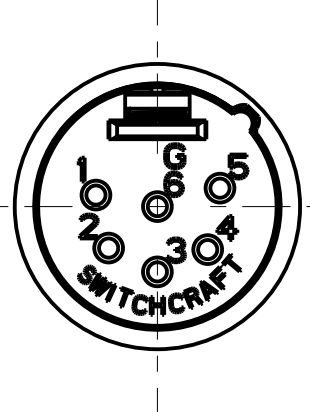
3 PIN



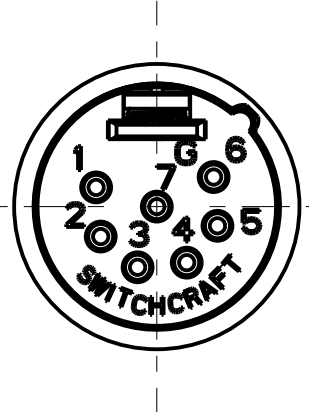
4 PIN



5 PIN



6 PIN



7 PIN

STANDARD SERIES

M

INSERT SCREW - STAINLESS STEEL
FLEX RELIEF SCREW - STEEL
HOUSING - ZINC, NICKEL PLATED
TUBULAR INSULATOR - MYLAR
SOLDER TERMINAL - BRASS, ELECTRO TIN
FLEX RELIEF - HI-FAX
CLAMP PLATE - STAINLESS STEEL
INSULATOR - POLYESTER, GREEN (UL94V-0)
PINS - BRASS, SILVER PLATED

A

M

FLEX RELIEF COLOR
BLANK = BLACK
01 = BROWN
02 = RED
03 = ORANGE
04 = YELLOW
05 = GREEN
06 = BLUE
07 = PURPLE
08 = GRAY
09 = WHITE

PIN PLATING
BLANK = SILVER (STANDARD)
AU = GOLD

HOUSING FINISH
BLANK = NICKEL PLATED (STANDARD)
B = BLACK CHROME

N

FLEX RELIEF SIZE
BLANK = STANDARD SIZE (0.210 TO 0.300)
L = LARGE CABLES (0.300 TO 0.328)
S = SMALL CABLES (0.105 TO 0.205)

NO. OF PINS:
3 = 3 PINS
4 = 4 PINS
5 = 5 PINS
6 = 6 PINS
7 = 7 PINS

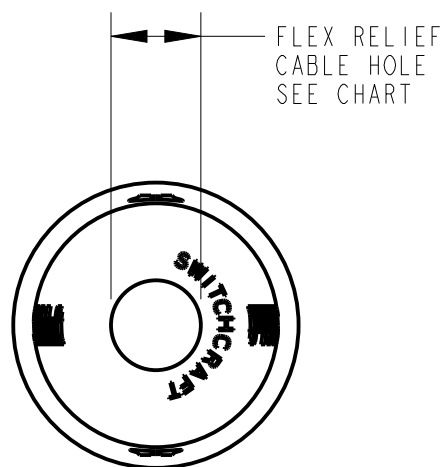
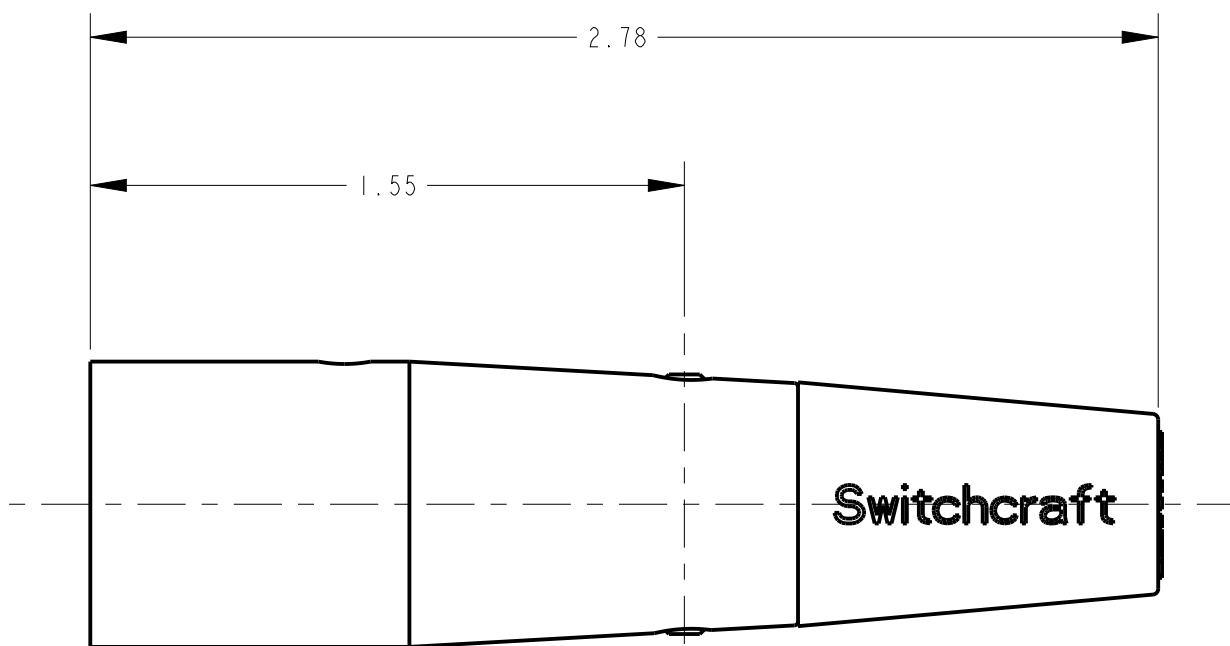
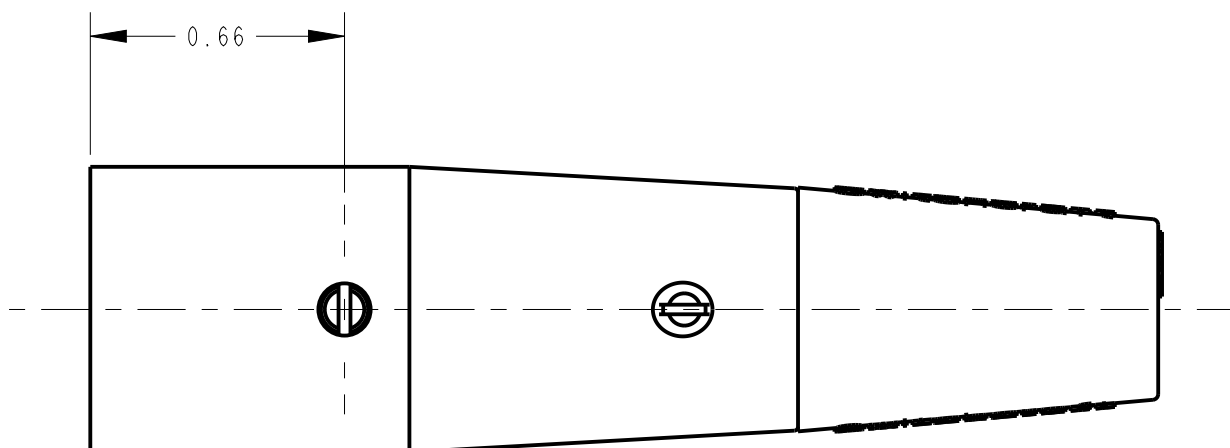
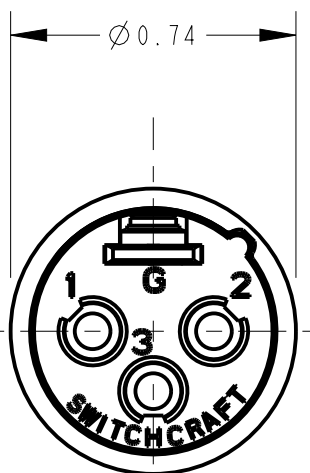
PROFESSIONAL SERIES

M

SAME AS ABOVE EXCEPT
HOUSING - NON-REFLECTIVE VELTONE FINISH
FLEX RELIEF - GRAY
PIN - PHOSPHOR BRONZE, GOLD OVER NICKEL

OGP - 23

NO. OF PINS:
3 = 3 PINS
4 = 4 PINS
5 = 5 PINS
6 = 6 PINS
7 = 7 PINS



FLEX RELIEF
CABLE HOLE
SEE CHART

NOTE:

1. ALL DIMENSIONS REFERENCE UNLESS OTHERWISE SPECIFIED.

CUSTOMER DRAWING

★ STAR SYMBOL DENOTES CRITICAL DIMENSION

THIS DRAWING DESCRIBES A DESIGN CONSIDERED PROPRIETARY IN NATURE, DEVELOPED AND MANUFACTURED BY SWITCHCRAFT INC. AND IS RELEASED ON A CONFIDENTIAL BASIS FOR IDENTIFICATION PURPOSES ONLY.

REV	ECO NUMBER	DATE	BY	APVD
N	28764	08-27-25	PC	TJK
M	27215	10-28-13	TO	TJK
L	ECO #22530	12-21-98	MM	EB
K	22353	6-12-98	DA	EB
REVISIONS				

UNLESS OTHERWISE SPECIFIED
1. ALL DIMENSIONS IN INCHES
- TWO PLACE DECIMALS ±0.01
- THREE PLACE DECIMALS ±0.005
- ANGLES ±1°
- ALL DIA. CONCENTRIC WITHIN 0.005 T.I.R.
2. FEATURES ON THE SAME CENTERLINE
MUST BE ALIGNED WITHIN ±0.002
3. REMOVE ALL BURRS
DO NOT SCALE DRAWING

SIZE	WIDTH	MULT	LBS/M	TEMPER
FINISH SPEC No.				
FIRST USED ON			SCALE 2:1	
DATE DRAWN	BY	CHKD	APVD	
6-18-94	SG	AA 7-22-94	GHJ 8-1-94	
NAME				
A SERIES MALE OG				
PART No.				
A_M_SERIES				
REV				
N				

Switchcraft®

SHEET 1 OF 1