

8

7

6

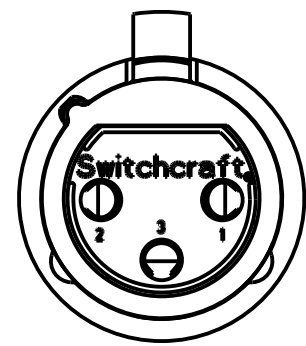
5

4

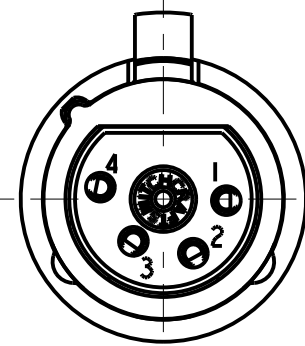
3

2

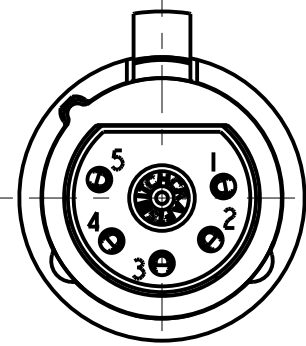
1



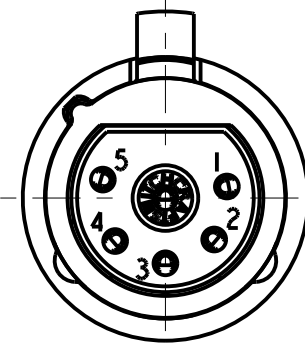
3 PIN



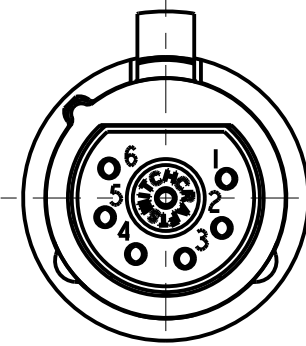
4 PIN



5 PIN



6 PIN



7 PIN

STANDARD SERIES

INSERT SCREW - STAINLESS STEEL
FLEX SCREW - STEEL, NICKEL PLATED
HOUSING - ZINC, NICKEL PLATED
SHELL - STAINLESS STEEL
LATCH BUTTON - ZINC, NICKEL PLATED
LATCH SPRING - STAINLESS STEEL
CONTACTOR - BERYLLIUM COPPER, NICKEL PLATE
TUBULAR INSULATOR - MYLAR
SOLDER TERMINAL - BRASS, ELECTRO TIN
FLEX RELIEF - HI-FAX, BLACK - STANDARD (X)
CLAMP PLATE - STAINLESS STEEL
INSULATORS - POLYESTER, GREEN
CONTACTS - BRASS, SILVER PLATED

- A F
- COLOR OF FLEX RELIEF
BLANK = BLACK
01 = BROWN
02 = RED
03 = ORANGE
04 = YELLOW
05 = GREEN
06 = BLUE
07 = PURPLE
08 = GRAY
09 = WHITE
- CONTACT PLATING
BLANK = SILVER (STANDARD)
AU = GOLD
- HOUSING FINISH (SEE NOTE 2)
BLANK = NICKEL PLATE (STANDARD)
BX = BLACK CHROME (Y)
- LATCH TYPE
BLANK = STANDARD LATCHLOCK
D = FAS-DIS-CONNECT DETENT (SEE FIGURE 3)
- FLEX RELIEF SIZE
BLANK = STANDARD SIZE (0.210 TO 0.300)
L = LARGE CABLES (0.300 TO 0.328)
S = SMALL CABLES (0.105 TO 0.205)
- NO. OF CONTACTS:
3 = 3 CONTACTS
4 = 4 CONTACTS
5 = 5 CONTACTS
6 = 6 CONTACTS
7 = 7 CONTACTS

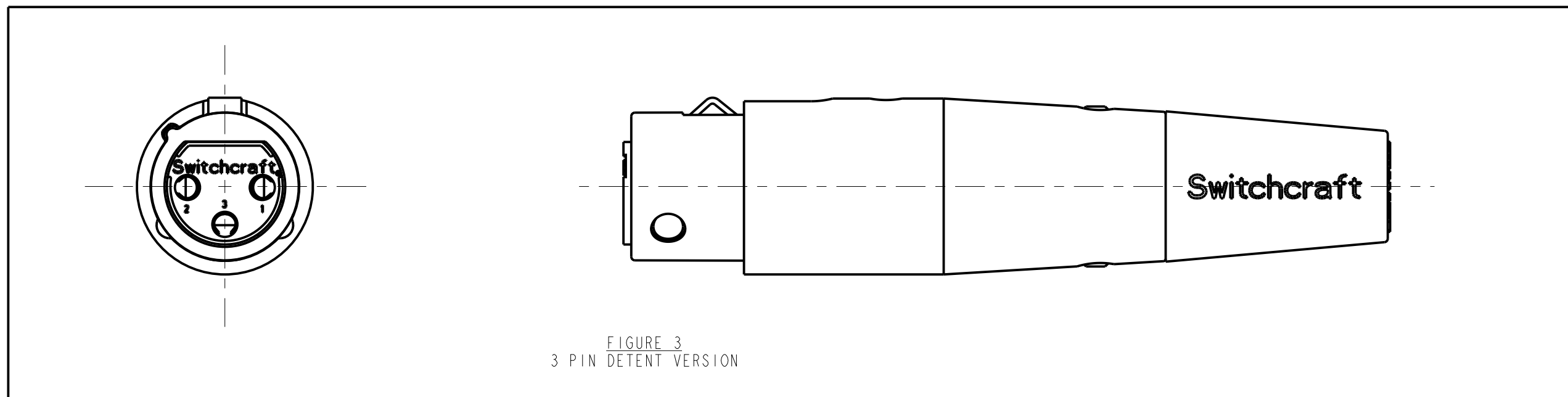
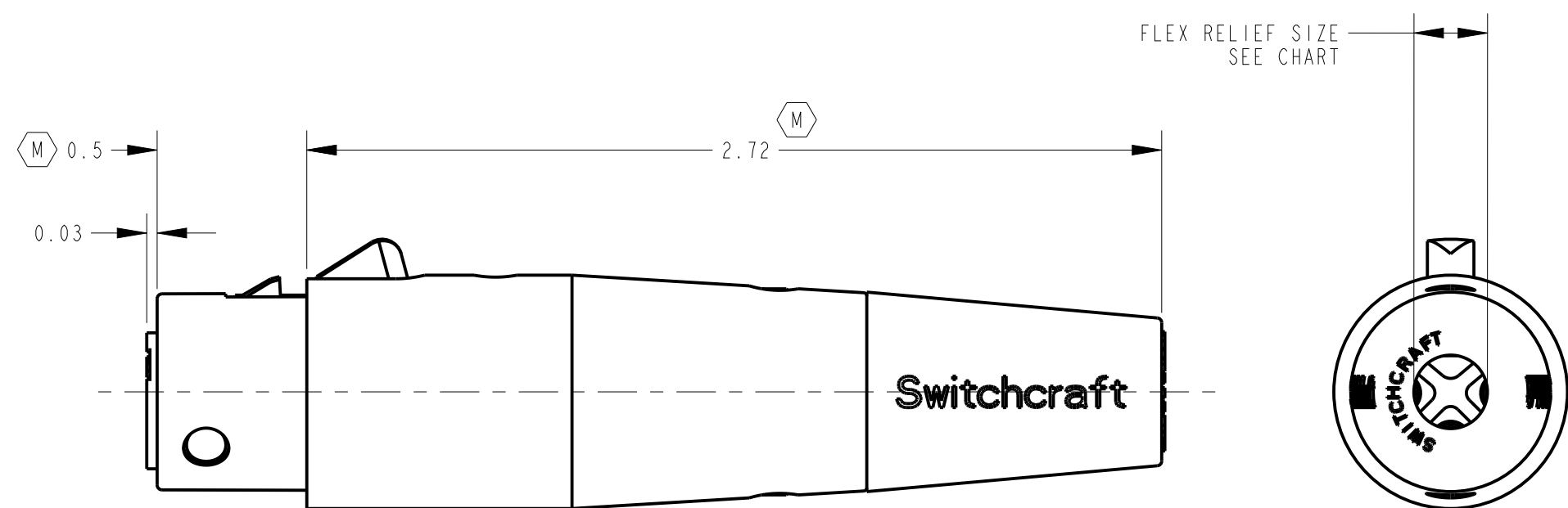
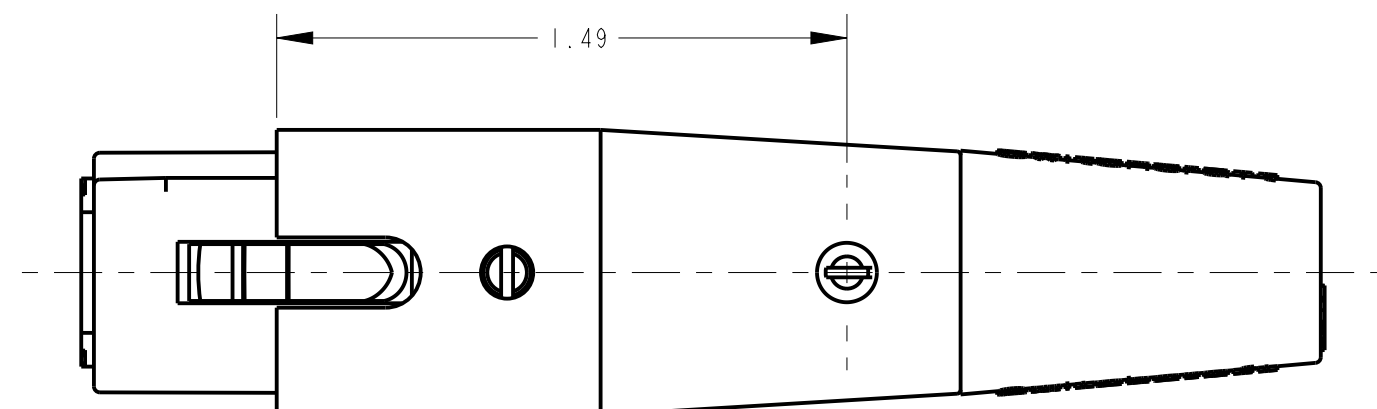
PROFESSIONAL SERIES

SAME AS ABOVE EXCEPT
CONTACT PIN - PHOSPHOR BRONZE, GOLD OVER NICKEL
HOUSING - NON REFLECTIVE VEL-TONE FINISH
FLEX RELIEF - GRAY

- OGP 22
- NO. OF CONTACTS:
3 = 3 CONTACTS

NOTE:

1. ALL DIMENSIONS REF. UNLESS OTHERWISE SPECIFIED.
- (X) 2. BLACK HOUSING AND INSERT WITH SATIN NICKEL PLATED LATCH.
- (X) 3. THIS PRODUCT IS RoHS COMPLIANT.

FIGURE 3
3 PIN DETENT VERSION

CUSTOMER DRAWING

					★ STAR SYMBOL DENOTES CRITICAL DIMENSION					THIS DRAWING DESCRIBES A DESIGN CONSIDERED PROPRIETARY IN NATURE, DEVELOPED AND MANUFACTURED BY SWITCHCRAFT INC. AND IS RELEASED ON A CONFIDENTIAL BASIS FOR IDENTIFICATION PURPOSES ONLY.				
					UNLESS OTHERWISE SPECIFIED					SIZE	WIDTH	MULT	LBS/M	TEMPER
					1. ALL DIMENSIONS IN INCHES - TWO PLACE DECIMALS ±0.01 - THREE PLACE DECIMALS ±0.005 - ANGLES ±1° - ALL DIA. CONCENTRIC WITHIN 0.005 T.I.R.					FINISH SPEC No.				
					2. FEATURES ON THE SAME CENTERLINE MUST BE ALIGNED WITHIN ±0.002					MATERIAL SPEC No.				
					3. REMOVE ALL BURRS					FIRST USED ON				
					DO NOT SCALE DRAWING					DATE DRAWN	BY	CHKD	APVD	SCALE
										10-26-93	SG	1-19-95	GHJ	2:1
										NAME				
										"A" SERIES FEMALE OG, RoHS				
										PART No.				
										A_F_SERIES				
										REV				
										Y				