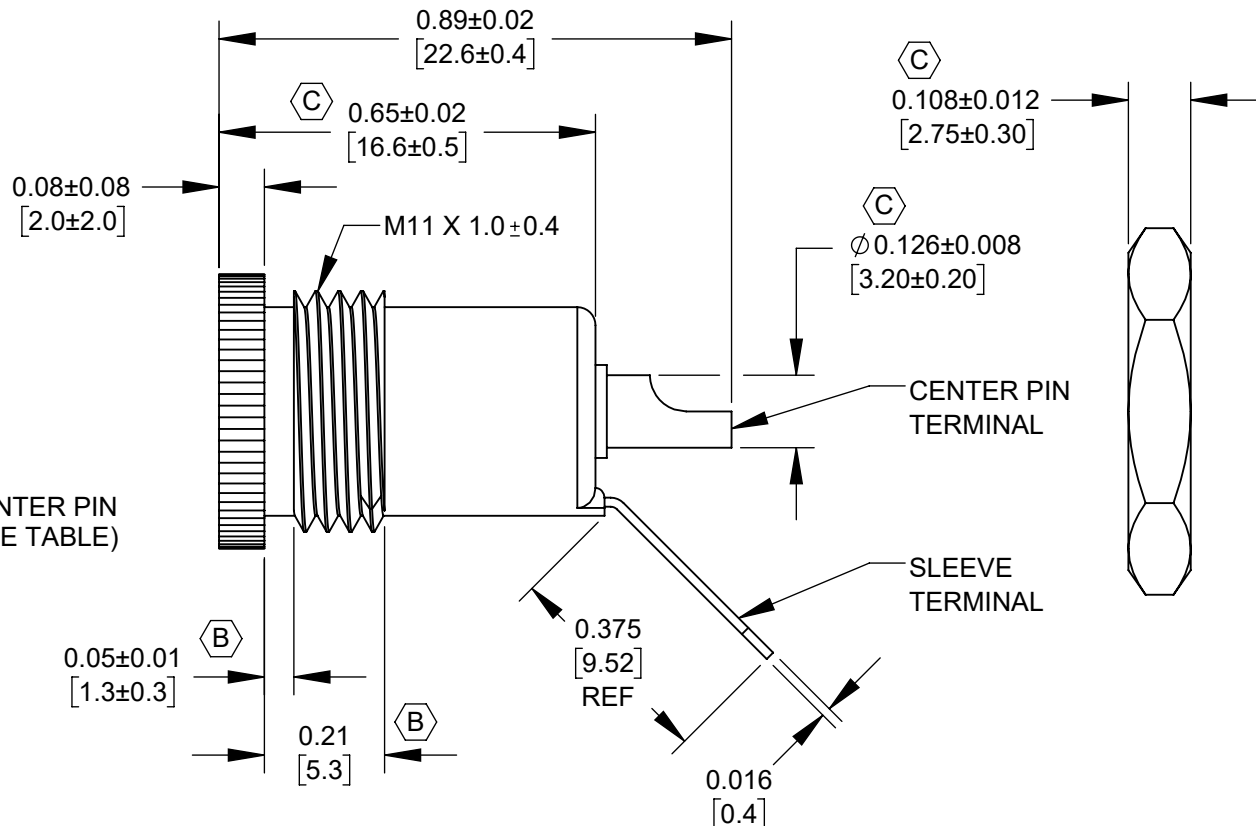


#### NOTES:

1. MATERIALS:  
BODY - BRASS, NICKEL PLATED  
CONTACTS - BRASS, NICKEL PLATED  
INSULATOR - PA66 GF30  
HEX NUT - DIE CAST, NICKEL PLATED
2. HEX NUT TO BE SHIPPED ASSEMBLED TO THE BODY OF JACK.
3. MOUNTING HOLE -  $\phi 0.437$  [11.10]  $\pm 0.005$  [0.13]
4. THIS PART IS RoHS COMPLIANT.



PART NUMBER	CENTER PIN DIAMETER
721AFMS	0.083 [2.1mm]
712AFMS	0.098 [2.5mm]

**CUSTOMER DRAWING**

					THIS DRAWING DESCRIBES A DESIGN CONSIDERED PROPRIETARY IN NATURE, DEVELOPED AND MANUFACTURED BY SWITCHCRAFT INC. AND IS RELEASED ON A CONFIDENTIAL BASIS FOR IDENTIFICATION PURPOSES ONLY.				
					SIZE	WIDTH	MULT	LBS/M	TEMPER
					FINISH			MATERIAL	
					SPEC No.			SPEC No.	
					FIRST USED ON			SCALE	
					DATE DRAWN			3:1	
					8/28/17	TJK	CHKD TJK 8/28/17	APVD TJK 8/28/17	
					NAME			PART No.	
					FRONT MOUNT SHIELDED POWER JACK, RoHS			712AFMS_721AFMS	
					SHEET			1 OF 1	
					REV			C	

SolidWorks CAD File

