

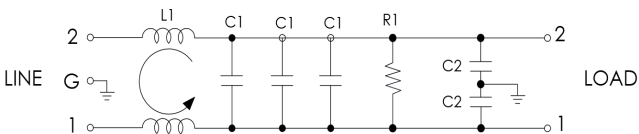
F19374

HIGH PERFORMANCE SINGLE STAGE POWER LINE FILTER

FEATURES

- » **Rated current** include **10A**
- » Designed to bring Excelsys XF Modular Power Supply Platform and the Excelsys Xsolo Platform to compliance with MIL-STD 461F, CE101 and CE102 conducted emissions under various loads
- » High Performance Design
- » Y-cap value can be adjusted to fit specification

ELECTRICAL SCHEMATIC



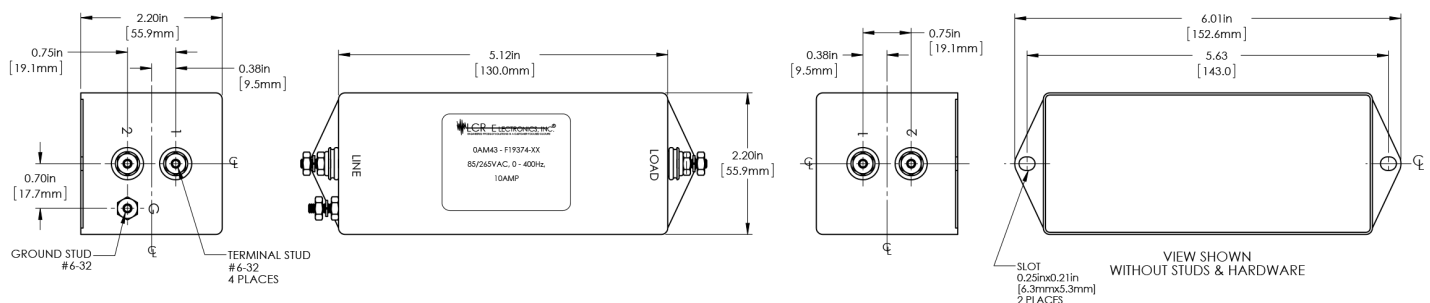
SPECIFICATIONS

OPERATING FREQUENCY	DC-400Hz
MAX. OPERATING VOLTAGE	85-265VAC, 300VDC
TERMINALS (-T)	QD: 0.25 TABS (F19374-1/-2) STUDS (F19374-2S/-2SM) CONNECTORS (F19374-2C)
MATERIAL	CRS 20 GA./0.034 PER ASTM A 366
PLATING	TIN PLATE PER ASTM B 545

PART NUMBERS

F19374-1/-2	Quick Disconnects (-1 Low Leakage)
F19374-2S/-2SM	Threaded Studs (-2SM Low Leakage)
F19374-2C	MIL Connectors (Custom Version)

MECHANICAL OUTLINE

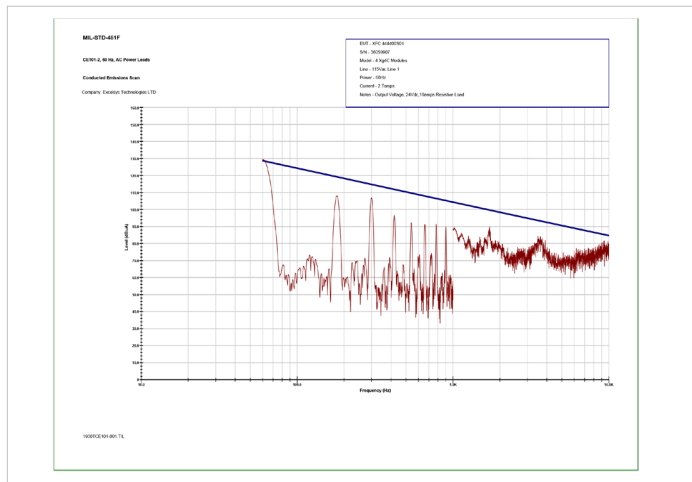


F19374

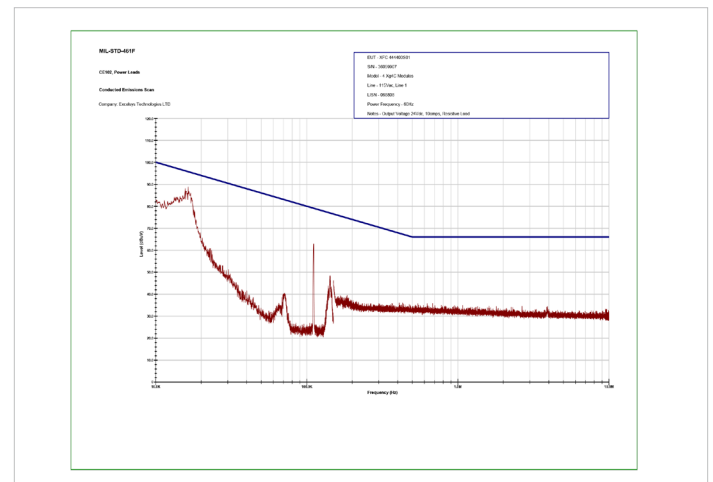
HIGH PERFORMANCE SINGLE STAGE POWER LINE FILTER

TEST RESULTS

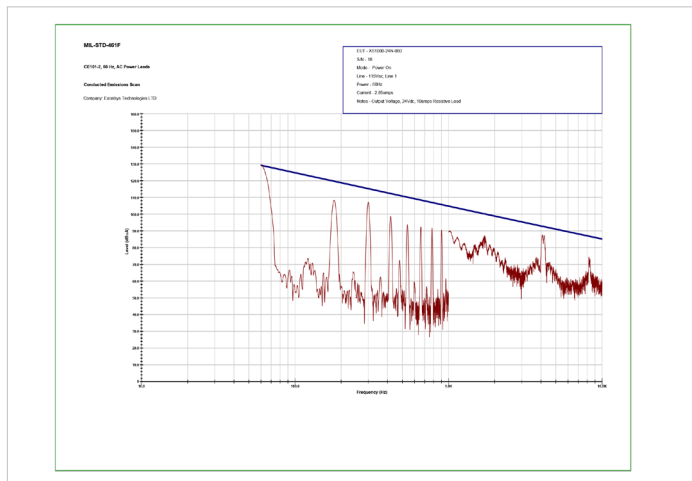
XF PLATFORM, CE 101



XF PLLATFORM, CE 102



XSOLO PLATFORM, CE101



XSOLO PLATFORM, CE102

