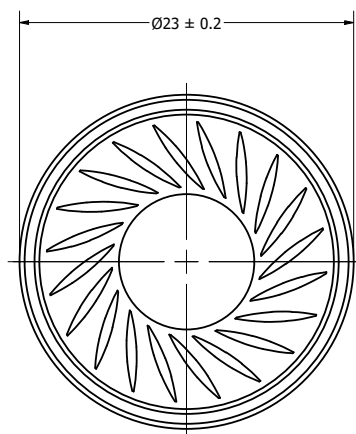
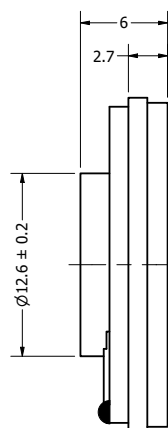


Part Number:	<b>SM230332-2</b>	
	DRAWN CJ	7/21/2021
	CHECKED P.D.	7/28/2021
Description:	Dynamic Speaker	
	APPROVED J.S.	7/28/2021
This document contains data proprietary to DB Unlimited. Any use or reproduction, in any form, without prior written permission of DB Unlimited is prohibited. All terms and conditions can be found at <a href="http://www.dbunlimitedco.com">www.dbunlimitedco.com</a>		

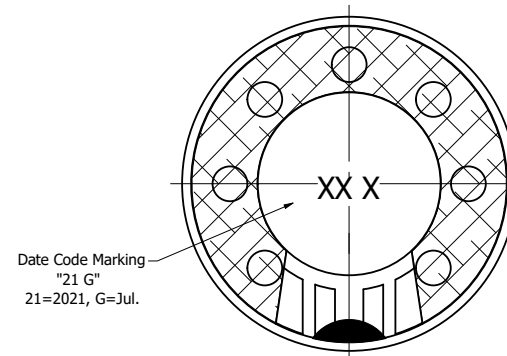
Top View



Side View



Bottom View



Items	Specifications	Conditions	REVISION HISTORY			
Sound Pressure Level	87	dB (@ 0.1W/10cm), Avg.	REV	DESCRIPTION	DATE	APPROVED
Resonant Frequency	550	Hz		Released from Engineering	7/28/2021	J.S.
Frequency Range	550 ~ 20,000	Hz		Updated Resonant Frequency and Frequency Range	8/5/2021	L.L.
Nominal Power	80	mW	1	Updated SPL calculation	8/16/2022	P.D.
Max. Power	150	mW	2			
Impedance	32	Ω		NOTES		
Cone Material	Mylar			1) All dimensions are in mm unless otherwise noted		
Mount Type	Flush Mount			2) All tolerances are ± 0.5 mm unless otherwise noted		
Storage Temperature	-30 ~ +70	°C		3) All parts meet RoHS		
Operating Temperature	-20 ~ +60	°C		4) Subject to change or redrawn without notice		