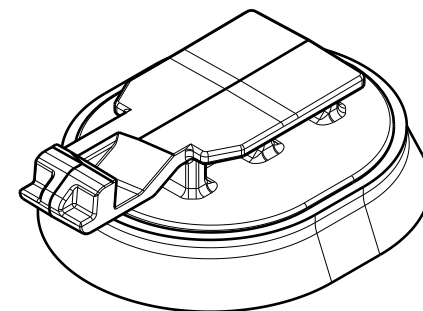
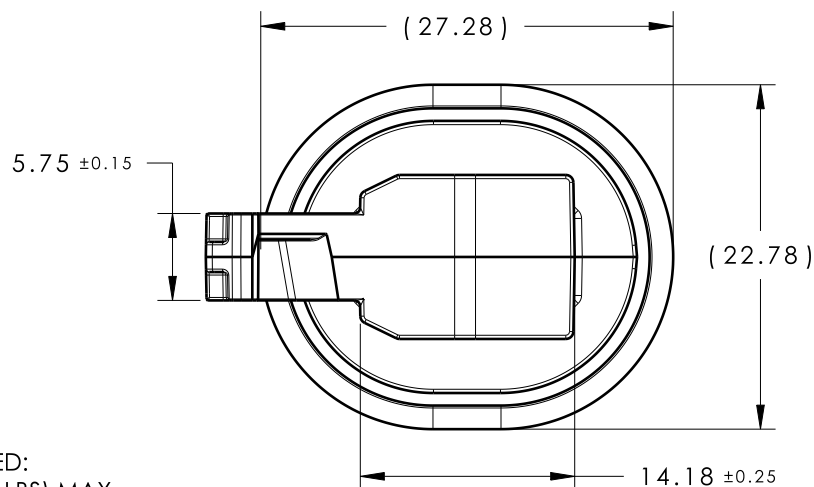


CATIA V5



Revision Level			Revision Record	Changed	Date	Approved	Date
Drawing	State	Part					
04.1	Design Release		SEE ECN# 015022	EJF	3/25/19	TAT	3/25/19

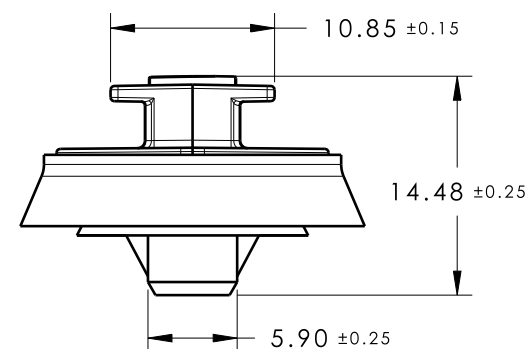
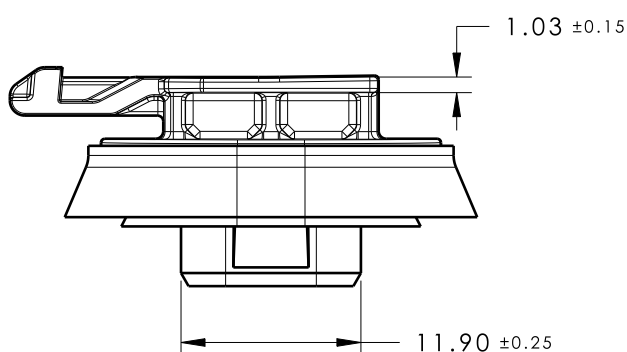


ISOMETRIC VIEW

REFERENCE:

PERFORMANCE REQUIREMENTS AT DRY AS MOLDED:

1. ARROWHEAD PUSH IN FORCE: 45 NEWTONS (10 LBS) MAX IN EACH APPLICABLE OVAL HOLE SIZE AND A PLATE THICKNESS OF 0.8mm.
2. ARROWHEAD PULL OUT FORCE: 110 NEWTONS (25 LBS) MIN IN EACH APPLICABLE OVAL HOLE SIZE AND A PLATE THICKNESS OF 0.8mm.
3. SHEET METAL THICKNESS RANGE: 0.60mm - 1.0mm
4. APPLICABLE OVAL HOLE SIZES:
 - A. 6.5 X 12.5mm +0.2/-0.4mm
 - B. 6.2 x 12.2mm +/-0.2mm
 - C. 6.5 X 13.0mm +/-0.2mm
5. DESIGN TO MEET STATIC & HIGH PRESSURE SPRAY SEAL REQUIREMENTS OF SAE/USCAR-44
6. DESIGNED TO MEET PUSH ON/PULL OFF FORCES OF SAE/USCAR-2
7. FITS INTO USCAR CLIP SLOT SPECIFICATION EWCAP-005-11 (NOT A TEST SPEC.)
8. MAXIMUM PERCENT REGRIND PERMISSIBLE: 25% PA66 ONLY
9. MAX ALLOWABLE MISMATCH TO BE: 0.1mm
10. FLASH PERMISSIBLE IF PART PERFORMANCE IS NOT AFFECTED



04.1

04.1

GLOBAL PART DESCRIPTION	MATERIAL	COLOR
SAHOVALCC-PA66HIRHSUV/TPE-BK	PA66HIRHSUV/TPE	BLACK

Material SEE CHART COLOR: SEE CHART	Units millimeters Tolerance defined on each dimension	The copyright of this drawing is reserved by HellermannTyton. It is issued on condition that it is not reproduced, copied or disclosed to a third party, either wholly or in part, without the consent of HellermannTyton.	Drawn	EJF	1/24/17	Article/Type-No	SAHOVALCC	Scale	2:1
			Approved	EJH	1/24/17	Title	SEALED OVAL ARROWHEAD WITH 11mm CONNECTOR TOP	Project Number	16-0349
			HellermannTyton North America Email: corp@htamericas.com Web: www.hellermann.tyton.com			Drawing-No	16-0349-031-CSU	Format	AH
						Production : Phase		Sheet	1/1