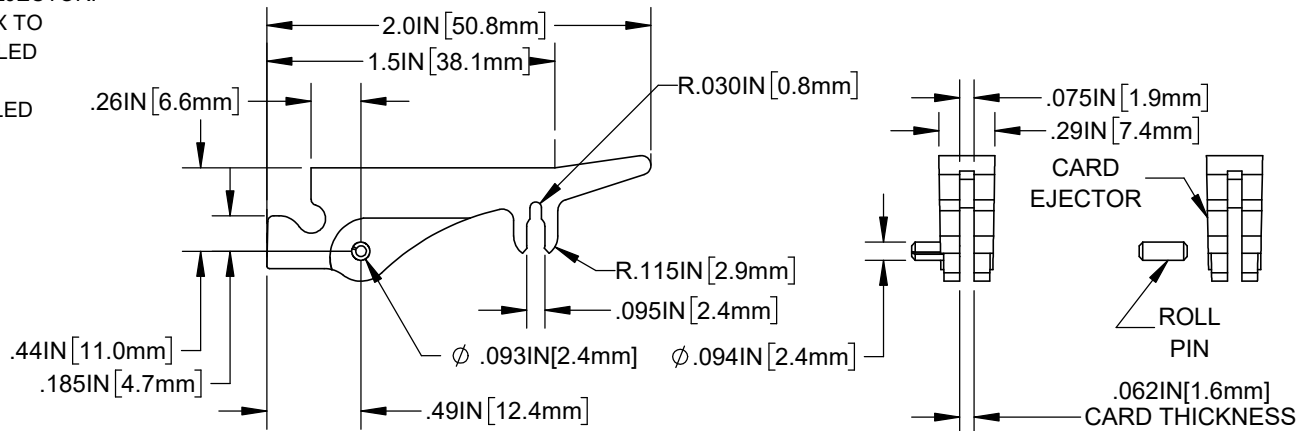


NOTES:

1. MATERIAL:
CARD EJECTOR: NYLON 6/6, 94V-2
ROLL PIN: STAINLESS STEEL 304
2. USE ONE (1) ROLL PIN (P/N: RP-250) FOR EACH CARD EJECTOR.
3. PRE-ASSEMBLED ROLL PINS WILL HAVE A "/PA" SUFFIX TO PART NUMBER. ROLL PIN ASSEMBLY CAN BE ASSEMBLED AT BIVAR OR MANUFACTURING LOCATIONS.
4. ROLL PINS ARE PACKAGED AND SHIPPED UNASSEMBLED WITH PART NUMBERS WITHOUT THE "/PA" SUFFIX.
5. HOT STAMPED CARD EJECTORS HAVE A "/HS" SUFFIX TO PART NUMBER. HOT STAMPING SHALL BE PERFORMED AT THE BIVAR LOCATION.
6. CUSTOM*** COLORS CAN BE REQUESTED AND ARE SUBJECT TO AVAILABILITY.

| REVISIONS | | | |
|-----------|-------------|----------|----------|
| REV. | DESCRIPTION | DATE | APPROVED |
| E | ECO-1268 | 11/30/23 | A.V. |



PART NUMBER ASSIGNMENT

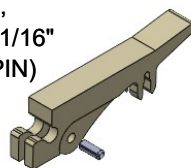
LP-1107 ZZ/YY

| /YY | FEATURE |
|-----------|------------------------|
| /PA | PRE-ASSEMBLED ROLL PIN |
| /HS | HOT STAMPED |
| ZZ | COLOR |
| NT | NATURAL |
| BK | BLACK |
| CUSTOM*** | COLOR |
| BE | BLUE |
| GN | GREEN |
| RD | RED |
| YW | YELLOW |
| OE | ORANGE |
| VT | VIOLET |
| FG | FOREST GREEN |
| AA | AQUAMARINE |
| PK | PINK |
| GY | GRAY |
| LE | LIME |
| BN | BROWN |

PART NUMBER EXAMPLES:

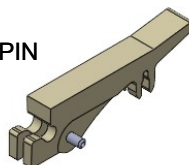
CARD EJECTOR, WHITE,
FOR CARD THICKNESS 1/16"
(UNASSEMBLED ROLL PIN)

LP-1107 NT



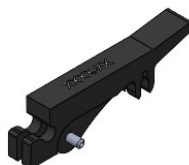
CARD EJECTOR, NATURAL,
FOR CARD THICKNESS 1/16"
WITH PRE-ASSEMBLED ROLL PIN

LP-1107 NT/PA



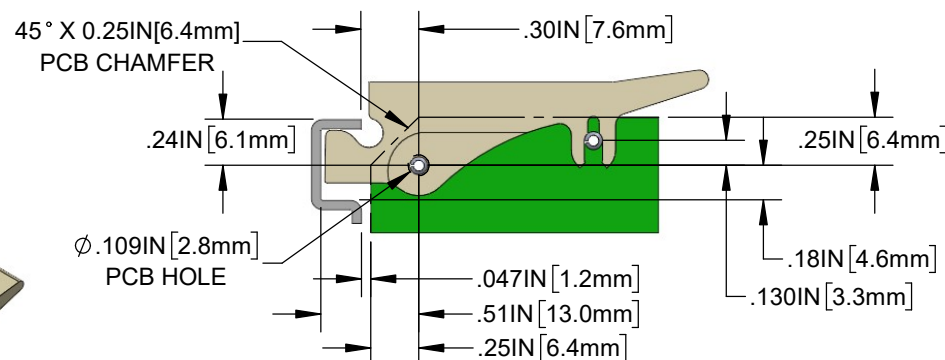
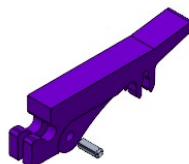
CARD EJECTOR, BLACK,
FOR CARD THICKNESS 1/16"
WITH PRE-ASSEMBLED ROLL PIN
AND REQUIRES HOT STAMPING

LP-1107 BK/PA/HS



CARD EJECTOR, VIOLET,
FOR CARD THICKNESS 1/16"
(UNASSEMBLED ROLL PIN)

LP-1107 VT



RECOMMENDED APPLICATION LAYOUT

CUSTOMER USE DRAWING

| | | | |
|--|---------------------|--|---------------------|
| STANDARD TOLERANCE (UNLESS OTHERWISE SPECIFIED) | | 4 THOMAS, IRVINE, CA. 92618 TEL: (949) 951-8808 FAX: (949) 951-3974 | |
| DECIMALS | ANGULAR | | |
| .X ± .1 | X° ± 1° | TITLE: CARD EJECTOR KIT/ASSEMBLY | |
| .XX ± .01 | | DRAWING NO: LP-1107_E | REVISION: E |
| .XXX ± .005 | | SHEET SIZE A | CAGE CODE: 32559 |
| DESIGNED: S.IRVING | DATE: 11/14/2000 | SCALE: N/A | SHEET # 1 OF 1 |
| REVISED: A.VALDEZ | DATE: 11/30/2023 | CAD GENERATED DOCUMENT, DO NOT MEASURE DRAWING | |
| CHECKED: R.PEREYRA | DATE: 11/30/2023 | | |