

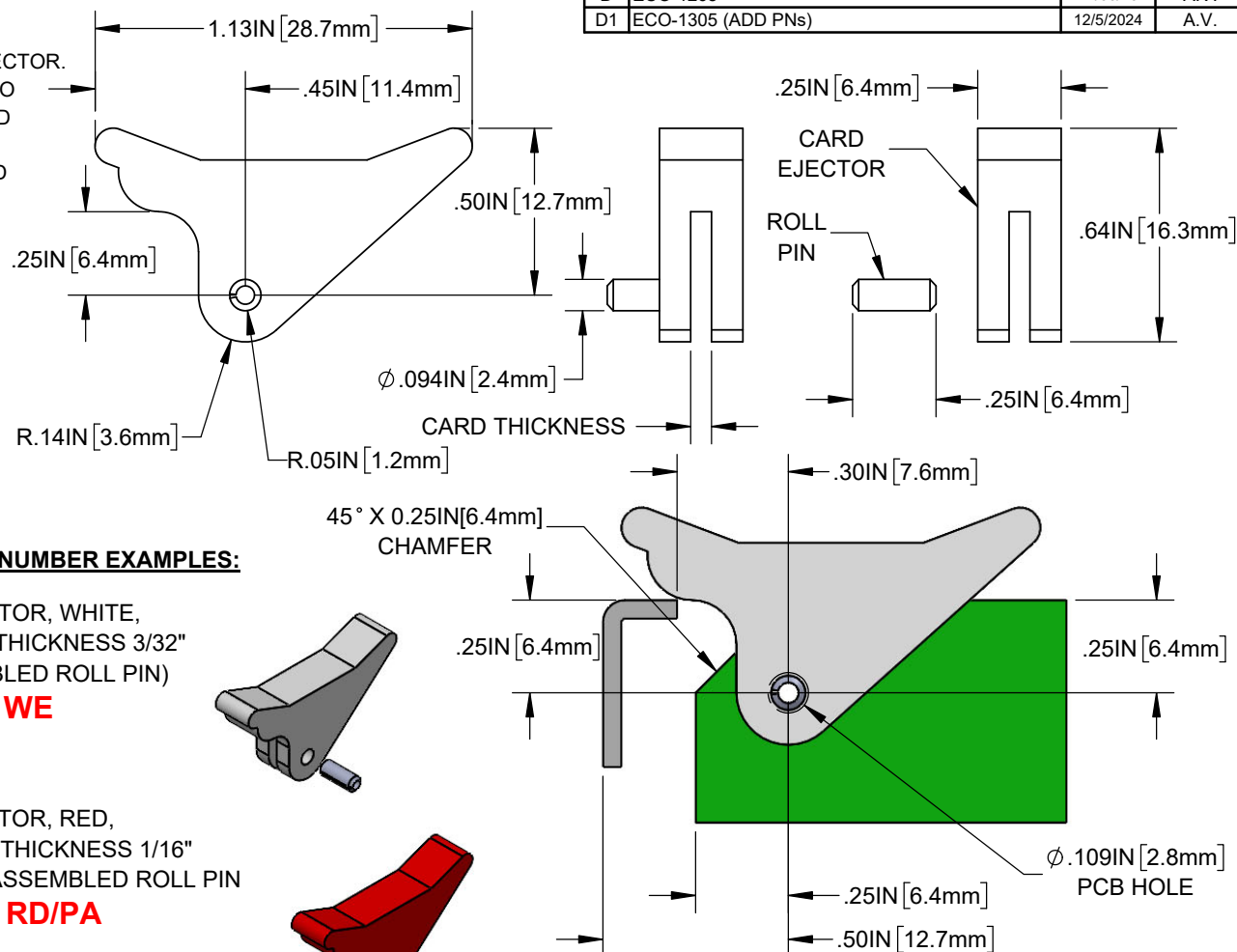
1. MATERIAL:

- CARD EJECTOR: NYLON 6/6, 94V-2
ROLL PIN: STAINLESS STEEL 304
2. USE ONE (1) ROLL PIN (P/N: RP-250) FOR EACH CARD EJECTOR.
 3. PRE-ASSEMBLED ROLL PINS WILL HAVE A "/PA" SUFFIX TO PART NUMBER. ROLL PIN ASSEMBLY CAN BE ASSEMBLED AT BIVAR OR MANUFACTURING LOCATIONS.
 4. ROLL PINS ARE PACKAGED AND SHIPPED UNASSEMBLED WITH PART NUMBERS WITHOUT THE "/PA" SUFFIX.
 5. HOT STAMPED CARD EJECTORS HAVE A "/HS" SUFFIX TO PART NUMBER. HOT STAMPING SHALL BE PERFORMED AT THE BIVAR LOCATION.
 6. CUSTOM*** COLORS CAN BE REQUESTED AND ARE SUBJECT TO AVAILABILITY.

CP - 2X ZZ/YY

X	CARD THICKNESS
6	1/16" (1.6mm)
9	3/32" (2.4mm)
/YY	FEATURE
/PA	PRE-ASSEMBLED ROLL PIN
/HS	HOT STAMPED
ZZ	COLOR
BK **	BLACK
BE **	BLUE
GN **	GREEN
NT	NATURAL
RD **	RED
WE	WHITE
YW **	YELLOW
CUSTOM***	COLOR
OE	ORANGE
VT	VIOLET
FG	FOREST GREEN
AA	AQUAMARINE
PK	PINK
GY	GRAY
LE	LIME
BN	BROWN

*** Applies to both CP-26 & CP-29



PART NUMBER EXAMPLES:

CARD EJECTOR, WHITE,
FOR CARD THICKNESS 3/32"
(UNASSEMBLED ROLL PIN)

CP-29 WE

CARD EJECTOR, RED,
FOR CARD THICKNESS 1/16"
WITH PRE-ASSEMBLED ROLL PIN

CP-26 RD/PA

CARD EJECTOR, GRAY
FOR CARD THICKNESS 3/32"
WITH PRE-ASSEMBLED ROLL PIN AND
REQUIRES HOT STAMPING

CP-29 GY/PA/HS

CARD EJECTOR, VIOLET,
FOR CARD THICKNESS 1/16"
(UNASSEMBLED ROLL PIN)

CP-26 VT

RECOMMENDED APPLICATION LAYOUT

CUSTOMER USE DRAWING

STANDARD TOLERANCE (UNLESS OTHERWISE SPECIFIED)		<div>BIVAR®</div> 4 THOMAS, IRVINE, CA. 92618 TEL: (949) 951-8808 FAX: (949) 951-3974	
DECIMALS X ± .1 .XX ± .01 .XXX ± .005	ANGULAR X° ± 1°	TITLE: CARD EJECTOR KIT/ASSEMBLY	
DESIGNED: S. IRVING	DATE: 04/20/1998	DRAWING NO: CP-2X_D1	REVISION D1
REVISED: A. VALDEZ	DATE: 12/05/24	SHEET SIZE	A
CHECKED: R. PEREYRA	DATE: 12/05/24	SCALE: N/A	CAGE CODE: 32559
		SHEET # 1 OF 1	
CAD GENERATED DOCUMENT. DO NOT REQUIRE DRAWING			