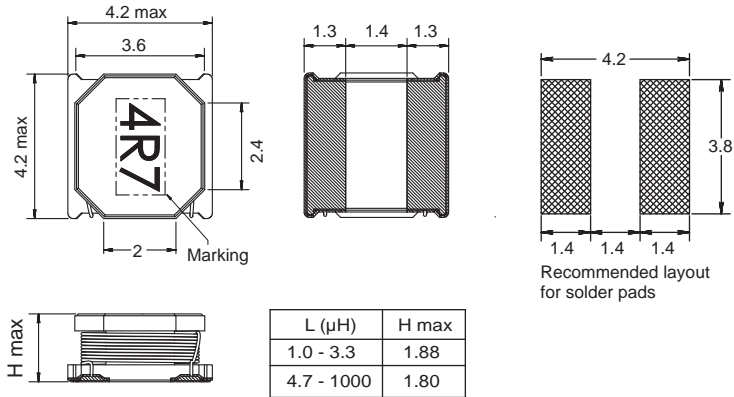
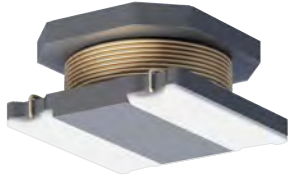




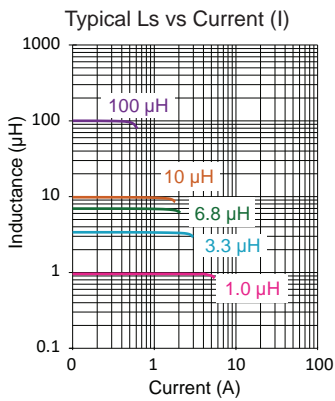
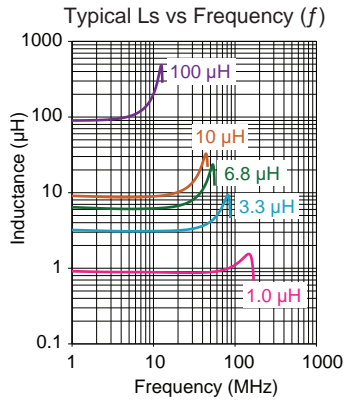
1616 FP



Non-shielded
Engineer's Kit: EK-1616FP-X



Chip Inductors for Power Applications



| Part No | Inductance | f_L | Tol | SRF | DCR | Rated DC Current | |
|----------------|------------|-----------|-------|-----------|----------|------------------|----------------------|
| | L (μH) | (kHz) | ± (%) | typ (MHz) | max (mΩ) | Isat (A) | I _{rms} (A) |
| 1616FP-1R0M-01 | 1.0 | 100 @ 1 V | 20 | 145 | 50 | 3.85 | 2.80 |
| 1616FP-1R5M-01 | 1.5 | 100 @ 1 V | 20 | 105 | 65 | 2.95 | 2.50 |
| 1616FP-2R2M-01 | 2.2 | 100 @ 1 V | 20 | 85 | 90 | 2.60 | 2.10 |
| 1616FP-3R3M-01 | 3.3 | 100 @ 1 V | 20 | 70 | 110 | 2.15 | 1.60 |
| 1616FP-4R7M-01 | 4.7 | 100 @ 1 V | 20 | 50 | 150 | 1.80 | 1.40 |
| 1616FP-6R8M-01 | 6.8 | 100 @ 1 V | 20 | 43 | 180 | 1.50 | 1.25 |
| 1616FP-100M-01 | 10 | 100 @ 1 V | 20 | 35 | 250 | 1.30 | 1.00 |
| 1616FP-150M-01 | 15 | 100 @ 1 V | 20 | 30 | 390 | 1.00 | 0.85 |
| 1616FP-220M-01 | 22 | 100 @ 1 V | 20 | 25 | 570 | 0.85 | 0.65 |
| 1616FP-330M-01 | 33 | 100 @ 1 V | 20 | 18 | 850 | 0.70 | 0.55 |
| 1616FP-470M-01 | 47 | 100 @ 1 V | 20 | 15 | 1190 | 0.60 | 0.50 |
| 1616FP-680M-01 | 68 | 100 @ 1 V | 20 | 12 | 1655 | 0.50 | 0.40 |
| 1616FP-101M-01 | 100 | 100 @ 1 V | 20 | 10 | 2350 | 0.40 | 0.35 |
| 1616FP-102M-01 | 1000 | 1 @ 1 V | 20 | 2.5 | 21500 | 0.10 | 0.10 |

Core Material: Ferrite

Revision date: 05 Jan 2026

SPQ: Taped / Reel 3000 [-01]

Remarks: Unlisted inductance values available upon request.