

650V SuperGaN® GaN FET in TOLT (source tab)

Description

The TP65H070G4RS 650V, 72mΩ Gallium Nitride (GaN) FET is a normally-off device. It combines state-of-the-art high voltage GaN HEMT and low voltage silicon MOSFET technologies—offering superior reliability and performance.

The Gen IV SuperGaN® platform uses advanced epi and patented design technologies to simplify manufacturability while improving efficiency over silicon via lower gate charge, output capacitance, crossover loss, and reverse recovery charge

Related Literature

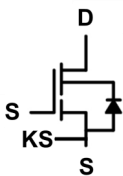
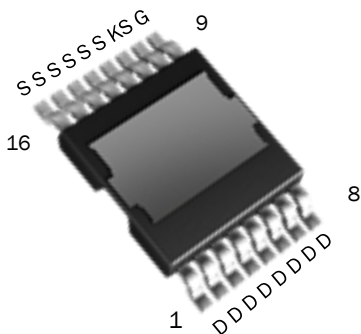
- [AN0009](#): Recommended External Circuitry for GaN FETs
- [AN0003](#): Printed Circuit Board Layout and Probing
- [AN0010](#): Paralleling GaN FETs
- [AN0014](#): Low cost driver solution

Ordering Information

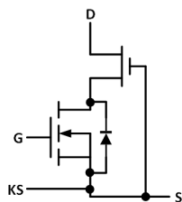
Part Number	Package	Package Configuration
TP65H070G4RS-TR	TOLT	Source

* "-TR" suffix refers to tape and reel. Refer to AN0012 for details.

TP65H070G4RS TOLT
(Top view)



Cascode Schematic Symbol



Cascode Device Structure

Features

- Gen IV technology
- JEDEC-qualified GaN technology
- Dynamic $R_{DS(on)eff}$ production tested
- Robust design, defined by
 - Wide gate safety margin
 - Transient over-voltage capability
- Very low Q_{RR}
- Reduced crossover loss
- RoHS compliant and Halogen-free packaging
- Top-side cooling

Benefits

- Achieves increased efficiency in both hard- and soft-switched circuits
 - Increased power density
 - Reduced system size and weight
 - Overall lower system cost
- Easy to drive with commonly-used gate drivers
- GSD pin layout improves high speed design

Applications

- Datacom
- Broad industrial
- PV inverter
- Servo motor
- Computing



Key Specifications

V_{DSS} (V)	650
$V_{DSS(TR)}$ (V)	800
$R_{DS(on)eff}$ (mΩ) max*	85
Q_{oss} (nC) typ	78
Q_G (nC) typ	9

* Dynamic on-resistance; see Figures 18 and 19

TP65H070G4RS

Absolute Maximum Ratings ($T_c=25^\circ\text{C}$ unless otherwise stated.)

Symbol	Parameter		Limit Value	Unit
V_{DSS}	Drain to source voltage ($T_J = -55^\circ\text{C}$ to 150°C)		650	V
$V_{DSS(TR)}$	Transient drain to source voltage ^(a)		800	
V_{GSS}	Gate to source voltage		± 20	
P_D	Maximum power dissipation @ $T_c=25^\circ\text{C}$		96	W
I_D	Continuous drain current @ $T_c=25^\circ\text{C}$ ^(b)		29	A
	Continuous drain current @ $T_c=100^\circ\text{C}$ ^(b)		18.4	A
I_{DM}	Pulsed drain current (pulse width: 10 μs)		120	A
T_c	Operating temperature	Case	-55 to +150	$^\circ\text{C}$
T_J		Junction	-55 to +150	$^\circ\text{C}$
T_s	Storage temperature		-55 to +150	$^\circ\text{C}$
T_{SOLD}	Soldering peak temperature ^(c)		260	$^\circ\text{C}$

Notes:

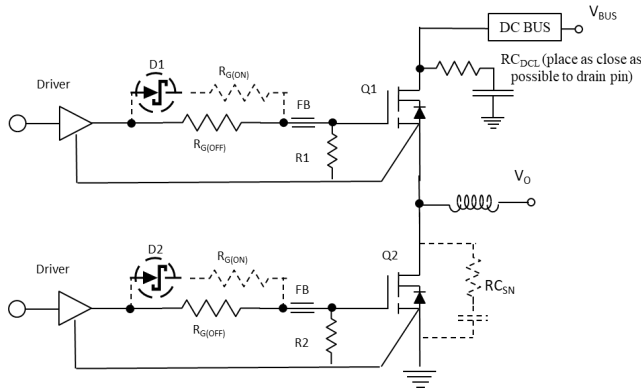
- a. In off-state, spike duration < 30 μs , non-repetitive.
- b. For increased stability at high current operation, see Circuit Implementation on page 3
- c. For 10 sec., 1.6mm from the case

Thermal Resistance

Symbol	Parameter	Maximum	Unit
$R_{\theta JC}$	Junction-to-case	1	$^\circ\text{C/W}$
$R_{\theta JA}$	Junction-to-ambient	62	$^\circ\text{C/W}$

TP65H070G4RS

Circuit Implementation



For additional gate driver options/configurations, please see Application Note [AN0009](#)

Layout Recommendations for hard switching Gate Loop:

- Gate Driver: SiLab Si823x/Si827x
- Keep gate loop compact (using Kelvin source)
- Minimize coupling with power loop

Power loop:

- Minimize power loop path inductance
- Minimize switching node coupling with high and low power plane
- Add DC bus noise filter (RC_DCL) to reduce voltage ringing
- Add Switching node snubber for high current operation

Simplified Half-bridge Schematic (See also on Figure 15)

Parameter	Symbol	Value
Single Gate Resistor ^(d)	R_G ($R_{G(OFF)}$ only)	45 Ω (D1/D2/ $R_{G(ON)}$: NS)
Dual Gate Resistor ^(d)	$R_{G(ON)}$ / $R_{G(OFF)}$	30 Ω / 45 Ω
Dual Gate Resistor ^(d)	Effective $R_{G(ON)}$ / $R_{G(OFF)}$	18 Ω / 45 Ω
Operating frequency	F_{sw}	≤ 300 kHz
Gate Ferrite Bead	FB	180 – 330 Ω at 100MHz ^(d)
Gate-to-source Resistor	$R1/R2$	10 k Ω
DC Link RC Noise Filter	RC_{DCL}	4.7nF + 5 Ω
Switching Node RC Snubber	RC_{SN}	Not Necessary ^(e)
Gate Driver	Driver	Si823x/Si827x or similar
Note: d. For every design and layout, a range of ferrite beads (FB), R_G and DC link RC filter should be evaluated to help suppress any high frequency ringing and optimize performance e. RC_{SN} (47pF + 15 Ω) is needed if <ul style="list-style-type: none"> • R_G is smaller than recommendations • Layout is not optimized • Requires high current operation 		

TP65H070G4RS

Electrical Parameter (T_J=25 °C unless otherwise stated)

Symbol	Parameter	Min	Typ	Max	Unit	Test Conditions
Forward Device Characteristics						
V _{(BL)DSS}	Drain-source voltage	650	—	—	V	V _{GS} =0V
V _{GS(th)}	Gate threshold voltage	3.3	4	4.8	V	V _{DS} =V _{GS} , I _D =0.7mA
R _{DS(on)eff}	Drain-source on-resistance ^(f)	—	72	85	mΩ	V _{GS} =10V, I _D =18A, T _J =25 °C
		—	148	—		V _{GS} =10V, I _D =18A, T _J =150 °C
I _{DSS}	Drain-to-source leakage current	—	1.2	12	μA	V _{DS} =650V, V _{GS} =0V, T _J =25 °C
		—	8	—		V _{DS} =650V, V _{GS} =0V, T _J =150 °C
I _{GSS}	Gate-to-source forward leakage current	—	—	100	nA	V _{GS} =20V
	Gate-to-source reverse leakage current	—	—	-100		V _{GS} =-20V
C _{ISS}	Input capacitance	—	638	—	pF	V _{GS} =0V, V _{DS} =400V, f=1MHz
C _{OSS}	Output capacitance	—	72	—		
C _{RSS}	Reverse transfer capacitance	—	2	—		
C _{O(er)}	Output capacitance, energy related ^(g)	—	105	—	pF	V _{GS} =0V, V _{DS} =0V to 400V
C _{O(tr)}	Output capacitance, time related ^(h)	—	194	—		
Q _G	Total gate charge	—	9	—	nC	V _{DS} =400V, V _{GS} =0V to 10V, I _D =18A
Q _{GS}	Gate-source charge	—	3.7	—		
Q _{GD}	Gate-drain charge	—	2.4	—		
Q _{OSS}	Output charge	—	80	—	nC	V _{GS} =0V, V _{DS} =0V to 400V
t _{D(on)}	Turn-on delay	—	43.4	—	ns	V _{DS} =400V, V _{GS} =0V to 12V, I _D =18A, R _G =50Ω
t _R	Rise time	—	6.2	—		
t _{D(off)}	Turn-off delay	—	56	—		
t _F	Fall time	—	7.2	—		

Notes:

- f. Dynamic on-resistance; see Figures 19 and 20 for test circuit and conditions
- g. Equivalent capacitance to give same stored energy as V_{DS} rises from 0V to 400V
- h. Equivalent capacitance to give same charging time as V_{DS} rises from 0V to 400V

TP65H070G4RS

Electrical Parameters (T_J=25 °C unless otherwise stated)

Symbol	Parameter	Min	Typ	Max	Unit	Test Conditions
Reverse Device Characteristics						
I _S	Reverse current	—	—	18	A	V _{GS} =0V, T _C =100 °C, ≤25% duty cycle
V _{SD}	Reverse voltage ⁽ⁱ⁾	—	2.4	—	V	V _{GS} =0V, I _S =18A
		—	1.7	—		V _{GS} =0V, I _S =9A
t _{RR}	Reverse recovery time	—	80	—	ns	I _S =18A, V _{DD} =400V, di/dt=1000A/ms
Q _{RR}	Reverse recovery charge ^(j)	—	0	—	nC	

Notes:

i. Includes dynamic R_{DS(on)} effect

j. Excludes Q_{oss}

TP65H070G4RS

Typical Characteristics ($T_C=25^\circ\text{C}$ unless otherwise stated)

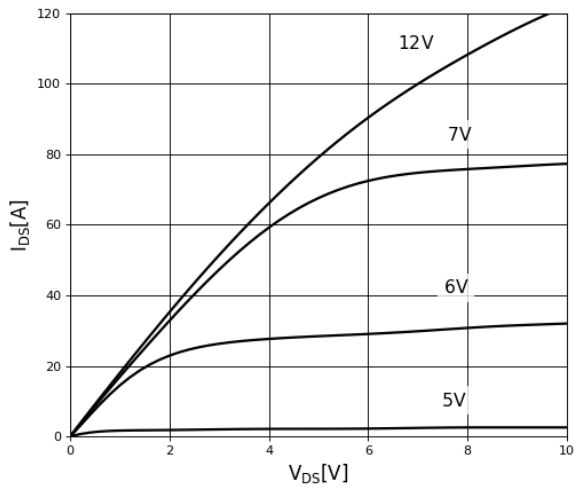


Figure 1. Typical Output Characteristics $T_J=25^\circ\text{C}$

Parameter: V_{GS}

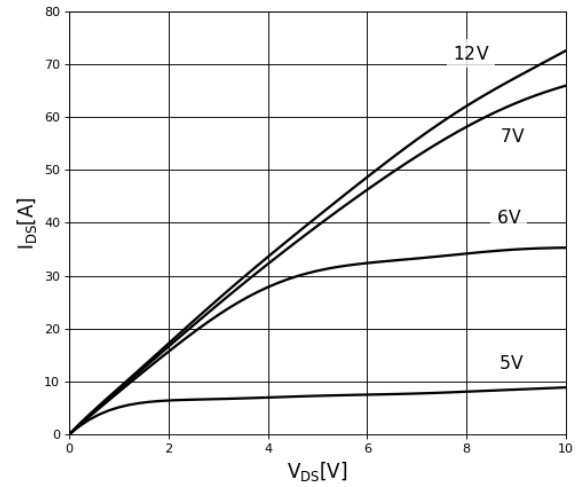


Figure 2. Typical Output Characteristics $T_J=150^\circ\text{C}$

Parameter: V_{GS}

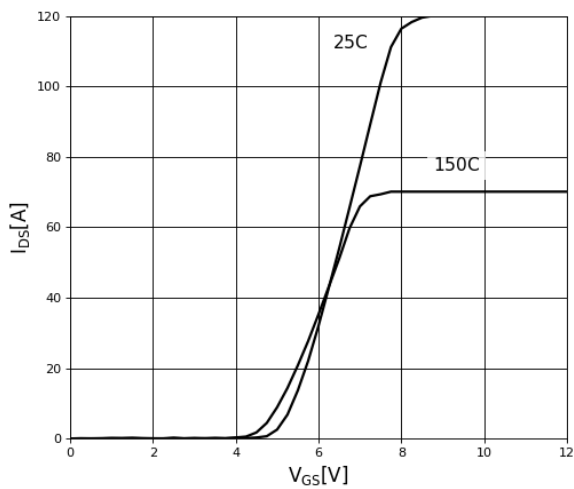


Figure 3. Typical Transfer Characteristics

$V_{DS}=10\text{V}$, parameter: T_J

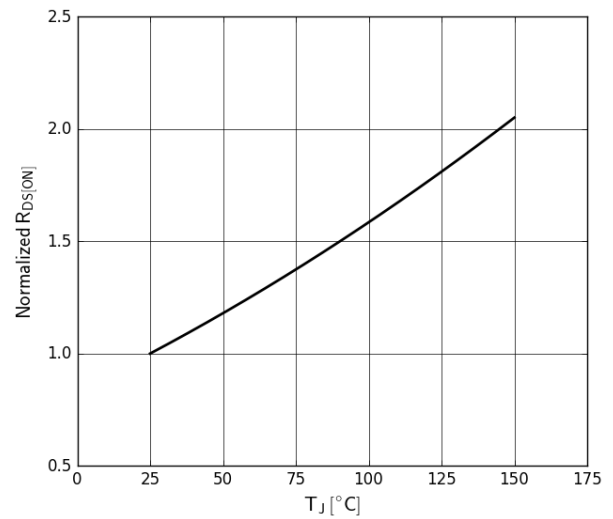


Figure 4. Normalized On-resistance

$I_D=18\text{A}$, $V_{GS}=10\text{V}$

TP65H070G4RS

Typical Characteristics ($T_C=25^\circ\text{C}$ unless otherwise stated)

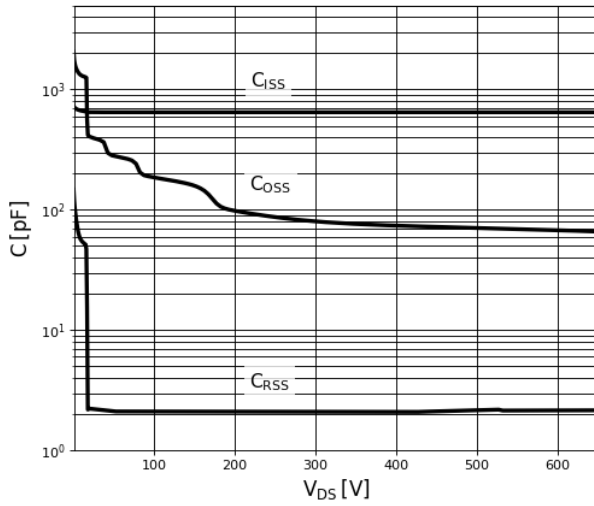


Figure 5. Typical Capacitance
 $V_{GS}=0V$, $f=1\text{MHz}$

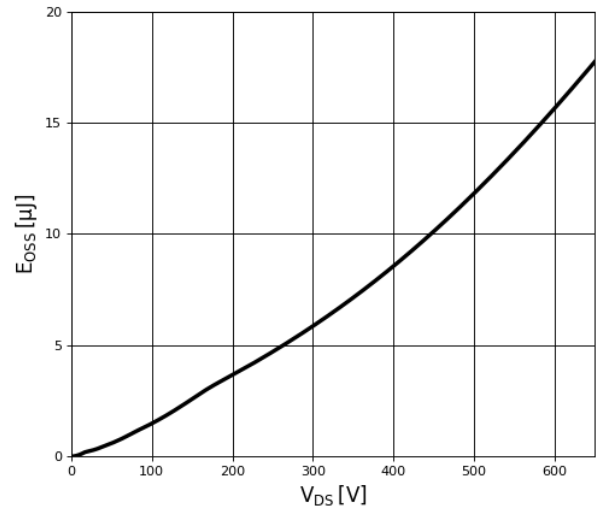


Figure 6. Typical C_{oss} Stored Energy

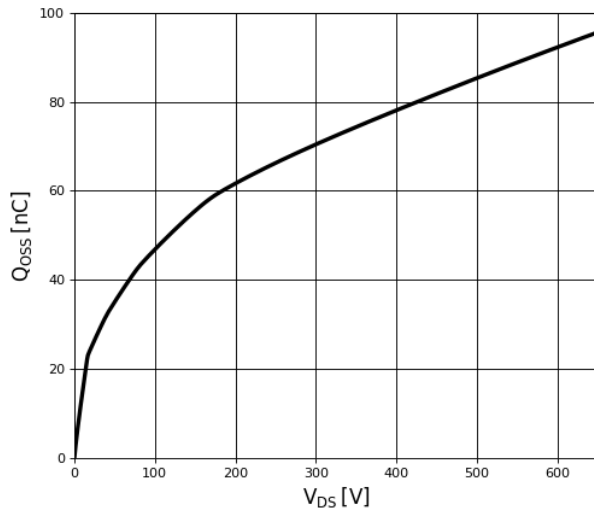


Figure 7. Typical Q_{oss}

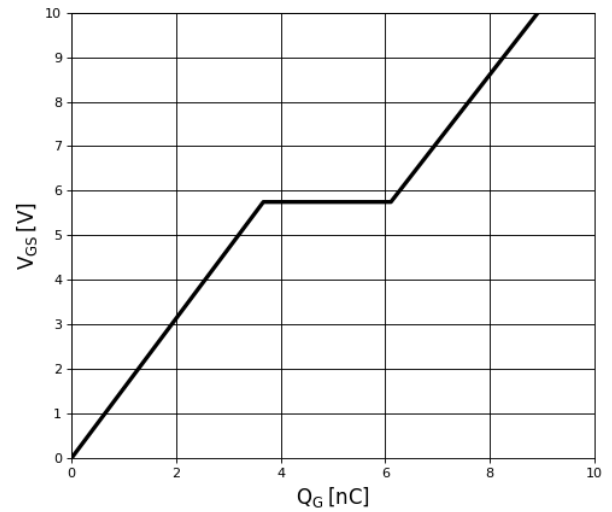


Figure 8. Typical Gate Charge
 $I_{DS}=18A$, $V_{DS}=400V$

TP65H070G4RS

Typical Characteristics ($T_C=25^\circ\text{C}$ unless otherwise stated)

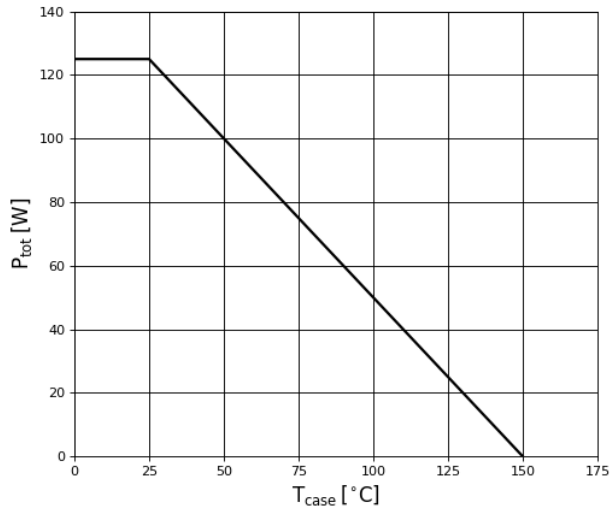


Figure 9. Power Dissipation

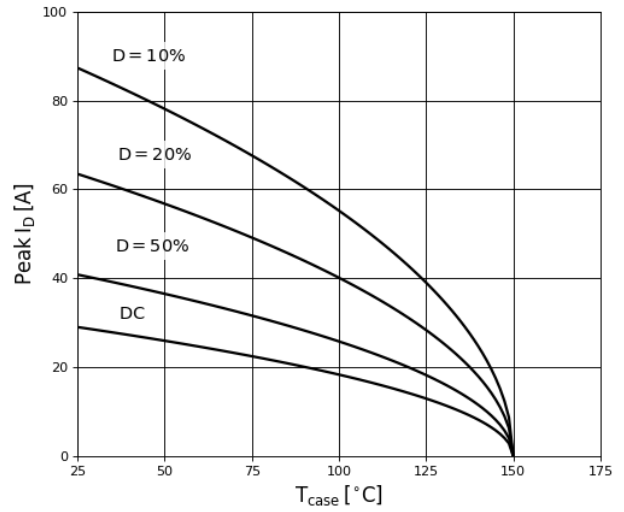


Figure 10. Current Derating
Pulse width $\leq 10\mu\text{s}$, $V_{GS} \geq 10\text{V}$

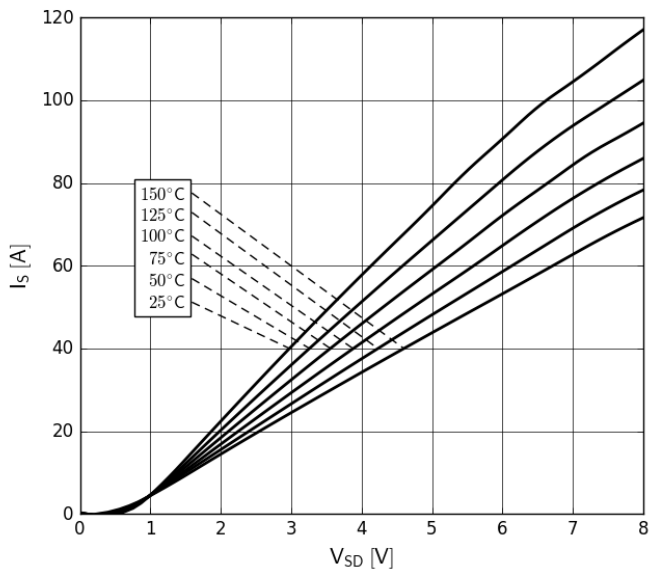


Figure 11. Forward Characteristics of Rev. Diode
 $I_S=f(V_{SD})$, parameter: T_J

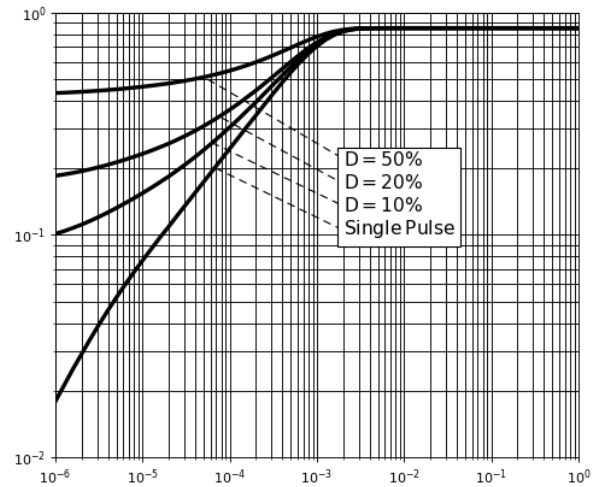


Figure 12. Transient Thermal Resistance

TP65H070G4RS

Typical Characteristics ($T_C=25^\circ\text{C}$ unless otherwise stated)

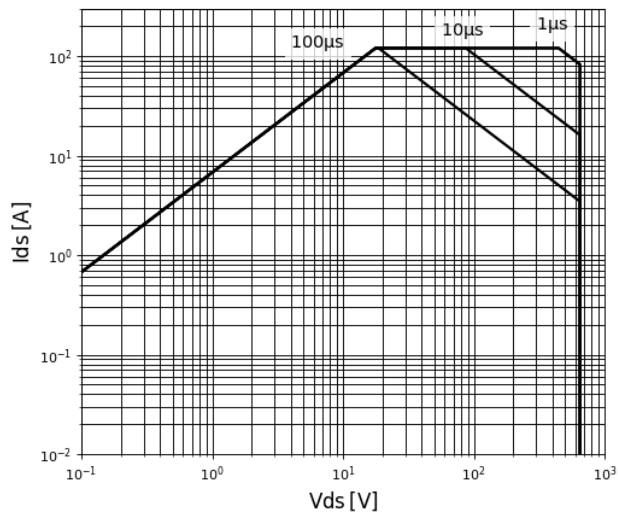
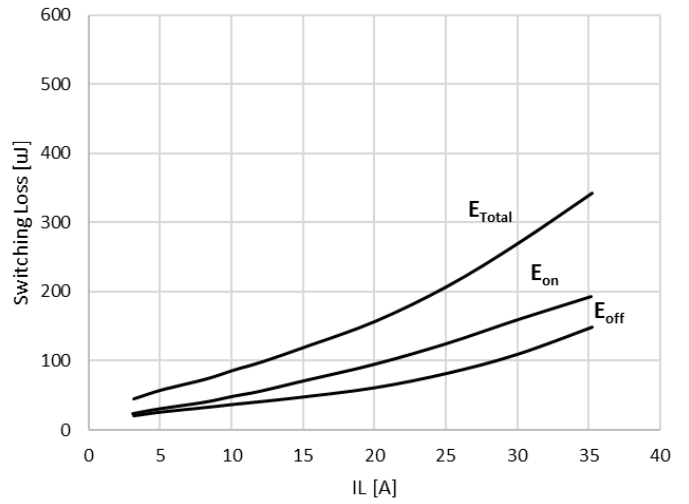


Figure 13. Safe Operating Area $T_C=25^\circ\text{C}$



**Figure 14. Inductive Switching Loss $T_C=25^\circ\text{C}$
 $R_g=50\Omega$, $V_{DS}=400\text{V}$**

Test Circuits and Waveforms

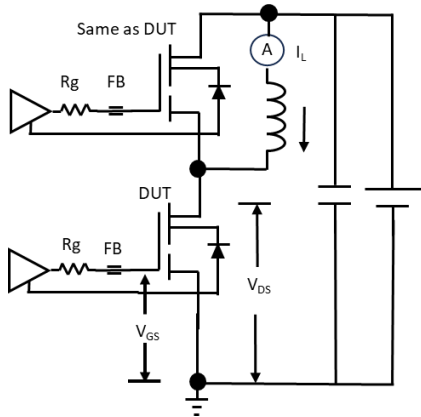
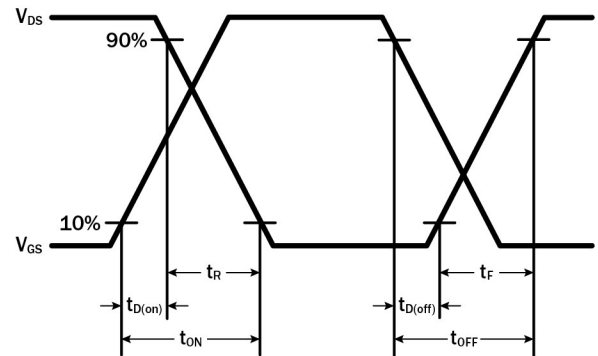


Fig-

15. Switching Time Test Circuit
(see circuit implementation on page 3)



ure

Figure 16. Switching Time Waveform

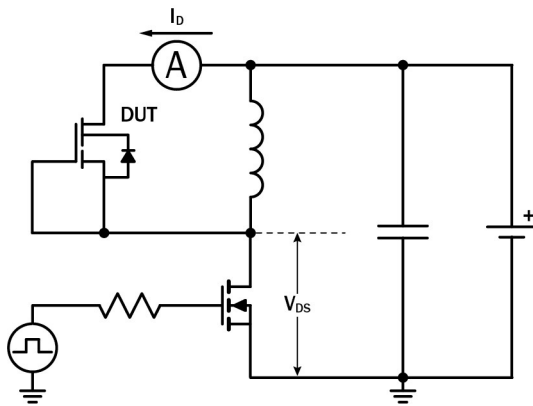


Figure 17. Diode Characteristics Test Circuit

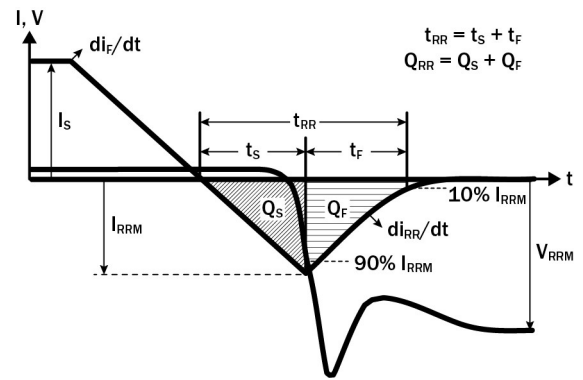


Figure 18. Diode Recovery Waveform

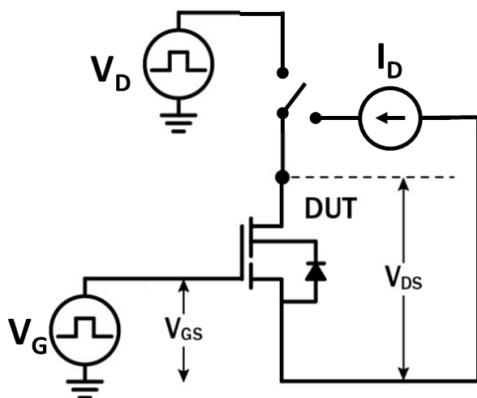


Figure 19. Dynamic $R_{DS(on)eff}$ Test Circuit

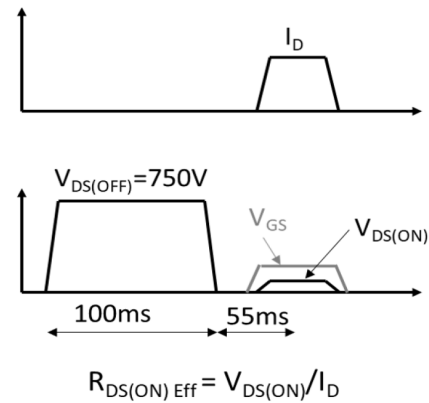


Figure 20. Dynamic $R_{DS(on)eff}$ Waveform

TP65H070G4RS

Design Considerations

The fast switching of GaN devices reduces current-voltage crossover losses and enables high frequency operation while simultaneously achieving high efficiency. However, taking full advantage of the fast switching characteristics of GaN switches requires adherence to specific PCB layout guidelines and probing techniques.

Before evaluating Transphorm GaN devices, see application note [Printed Circuit Board Layout and Probing for GaN Power Switches](#). The table below provides some practical rules that should be followed during the evaluation.

When Evaluating Transphorm GaN Devices:

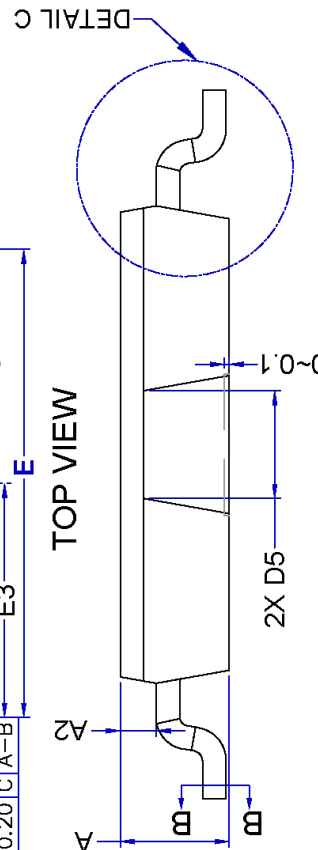
DO	DO NOT
Minimize circuit inductance by keeping traces short, both in the drive and power loop	Twist the pins of TO-220 or TO-247 to accommodate GDS board layout
Minimize lead length of TO-220 and TO-247 package when mounting to the PCB	Use long traces in drive circuit, long lead length of the devices
Use shortest sense loop for probing; attach the probe and its ground connection directly to the test points	Use differential mode probe or probe ground clip with long wire
See AN0003 : Printed Circuit Board Layout and Probing	

GaN Design Resources

The complete technical library of GaN design tools can be found at transphormusa.com/design:

- Reference designs
- Evaluation kits
- Application notes
- Design guides
- Simulation models
- Technical papers and presentations

Mechanical



DIM	mm		DIM	mm	
	MIN	MAX		MIN	MAX
A	2,20	2,35	D11	2,04	2,44
A1	0,01	0,11	E	9,70	10,10
A2	0,56	0,96	E1	9,26	9,66
b	0,60	0,85	E2	8,10	8,50
b1	0,60	0,80	E3	4,75	5,15
c	0,45	0,65	E4	0,20	0,60
c1	0,45	0,60	e	1,20 BSC	
D	10,00	10,30	e1	0,60 BSC	
D1	5,47	5,87	e2	8,40 BSC	
D2	1,80	2,20	H	14,80	15,20
D3	4,85	5,25	K	3,71	4,11
D4	5,00	5,13	L	2,25	2,65
D5	2,08	2,48	L1	7,30	7,70
D6	5,17	5,57	L2	1,30	1,70
D7	1,80	2,20	R	0,07	---
D8	0,10	0,50	P	2,90	3,10
D9	2,42	2,82	ø	4°	10°
D10	3,85	4,25			

TOLT_10mm x 15mm
transphorm

Mouser Electronics

Authorized Distributor

Click to View Pricing, Inventory, Delivery & Lifecycle Information:

[Transphorm:](#)

[TP65H070G4RS-TR](#)