

650V SuperGaN® FET in TO-247 (source tab)

Description

The TP65H050G4YS 650V, 50 mΩ gallium nitride (GaN) FET is a normally-off device using Transphorm's Gen IV platform. It combines a state-of-the-art high voltage GaN HEMT with a low voltage silicon MOSFET to offer superior reliability and performance.

The Gen IV SuperGaN® platform uses advanced epi and patented design technologies to simplify manufacturability while improving efficiency over silicon via lower gate charge, output capacitance, crossover loss, and reverse recovery charge.

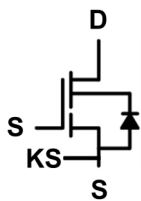
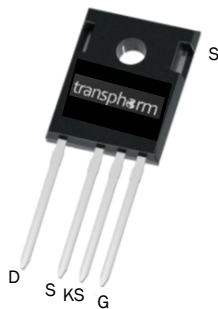
Related Literature

- [AN0009](#): Recommended External Circuitry for GaN FETs
- [AN0003](#): Printed Circuit Board Layout and Probing

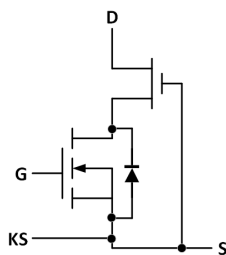
Ordering Information

| Part Number | Package | Package Configuration |
|--------------|---------------|-----------------------|
| TP65H050G4YS | 4 Lead TO-247 | Source |

TP65H050G4YS
TO-247
(top view)



Cascode Schematic Symbol



Cascode Device Structure

Features

- JEDEC qualified GaN technology
- Dynamic $R_{DS(on)eff}$ production tested
- Robust design, defined by
 - Wide gate safety margin
 - Transient over-voltage capability
- Enhanced inrush current capability
- Very low Q_{RR}
- Reduced crossover loss

Benefits

- Enables AC-DC bridgeless totem-pole PFC designs
 - Increased power density
 - Reduced system size and weight
 - Overall lower system cost
- Achieves increased efficiency in both hard- and soft-switched circuits
- Easy to drive with commonly-used gate drivers
- GSD pin layout improves high speed design

Applications

- Datacom
- Broad industrial
- PV inverter
- Servo motor



Key Specifications

| | |
|---------------------------|-----|
| V_{DSS} (V) | 650 |
| $V_{DSS(TR)}$ (V) | 800 |
| $R_{DS(on)eff}$ (mΩ) max* | 60 |
| Q_{RR} (nC) typ | 120 |
| Q_G (nC) typ | 16 |

* Dynamic on-resistance; see Figures 18 and 19

TP65H050G4YS

Absolute Maximum Ratings ($T_c=25^\circ\text{C}$ unless otherwise stated.)

| Symbol | Parameter | | Limit Value | Unit |
|---------------|--|----------|-------------|------------------|
| V_{DSS} | Drain to source voltage ($T_J = -55^\circ\text{C}$ to 150°C) | | 650 | V |
| $V_{DSS(TR)}$ | Transient drain to source voltage ^a | | 800 | |
| V_{GSS} | Gate to source voltage | | ± 20 | |
| P_D | Maximum power dissipation @ $T_c=25^\circ\text{C}$ | | 132 | W |
| I_D | Continuous drain current @ $T_c=25^\circ\text{C}$ ^b | | 35 | A |
| | Continuous drain current @ $T_c=100^\circ\text{C}$ ^b | | 22 | A |
| I_{DM} | Pulsed drain current (pulse width: 10 μs) | | 150 | A |
| T_C | Operating temperature | Case | -55 to +150 | $^\circ\text{C}$ |
| T_J | | Junction | -55 to +150 | $^\circ\text{C}$ |
| T_S | Storage temperature | | -55 to +150 | $^\circ\text{C}$ |
| T_{SOLD} | Soldering peak temperature ^c | | 260 | $^\circ\text{C}$ |
| - | Mounting Torque | | 70 | N cm |

Notes:

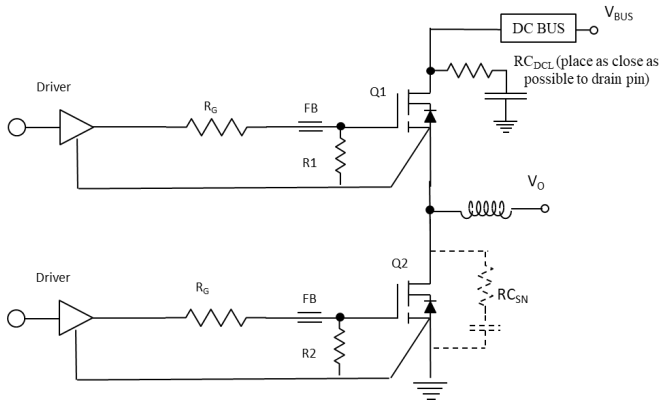
- In off-state, spike duty cycle $D < 0.01$, spike duration $< 30\mu\text{s}$, non repetitive
- For increased stability at high current operation, see Circuit Implementation on page 3
- For 10 sec., 1.6mm from the case

Thermal Resistance

| Symbol | Parameter | Typical | Unit |
|-----------------|---------------------|---------|--------------------|
| $R_{\theta JC}$ | Junction-to-case | 0.95 | $^\circ\text{C/W}$ |
| $R_{\theta JA}$ | Junction-to-ambient | 40 | $^\circ\text{C/W}$ |

TP65H050G4YS

Circuit Implementation



For additional gate driver options/configurations, please see Application Note [AN0009](#)

Layout Recommendations

Gate Loop:

- Gate Driver: SiLab Si823x/Si827x
- Keep gate loop compact
- Minimize coupling with power loop

Power loop: (For reference see page 13)

- Minimize power loop path inductance
- Minimize switching node coupling with high and low power plane
- Add DC bus snubber to reduce voltage ringing
- Add Switching node snubber for high current operation

Simplified Half-bridge Schematic (See also on Figure 15)

| Parameter | Symbol | Value |
|---|------------|---|
| Gate Resistor ^(d) | R_G | 47 Ω |
| Operating frequency | F_{SW} | 50~100 kHz |
| Gate Ferrite Bead ^(d) | FB | 180 – 270 Ω at 100MHz ^(d) |
| Gate-to-source Resistor | $R1/R2$ | 10 k Ω |
| DC Link RC Noise Filter ^(d) | RC_{DCL} | 10nF+ 5 Ω] |
| Switching Node RC Snub- | RC_{SN} | Not Necessary ^(e) |
| Gate Driver | Driver | Si823x/Si827x or similar |
| Note: d. For every design and layout, a range of ferrite beads (FB), R_G and DC link RC filter should be evaluated to help suppress any high frequency ringing and optimize performance e. RC_{SN} (47pF + 5 Ω) is needed if <ul style="list-style-type: none"> • R_G is smaller than recommendations • Layout is not optimized • Requires high current operation | | |

TP65H050G4YS

Electrical Parameters (T_J=25 °C unless otherwise stated)

| Symbol | Parameter | Min | Typ | Max | Unit | Test Conditions |
|---------------------------------------|---|-----|------|------|-------|--|
| Forward Device Characteristics | | | | | | |
| V _{DSS(BL)} | Drain-source voltage | 650 | — | — | V | V _{GS} =0V |
| V _{GS(th)} | Gate threshold voltage | 3.3 | 4 | 4.8 | V | V _{DS} =V _{GS} , I _D =0.7mA |
| ΔV _{GS(th)} /T _J | Gate threshold voltage temperature coefficient | — | -6.2 | — | mV/°C | |
| R _{DS(on)eff} | Drain-source on-resistance ^a | — | 50 | 60 | mΩ | V _{GS} =10V, I _D =22A |
| | | — | 105 | — | | V _{GS} =10V, I _D =22A, T _J =150 °C |
| I _{DSS} | Drain-to-source leakage current | — | 4 | 40 | μA | V _{DS} =650V, V _{GS} =0V |
| | | — | 15 | — | | V _{DS} =650V, V _{GS} =0V, T _J =150 °C |
| I _{GSS} | Gate-to-source forward leakage current | — | — | 100 | nA | V _{GS} =20V |
| | | — | — | -100 | | V _{GS} =-20V |
| C _{ISS} | Input capacitance | — | 1000 | — | pF | V _{GS} =0V, V _{DS} =400V, f=1MHz |
| C _{OSS} | Output capacitance | — | 110 | — | | |
| C _{RSS} | Reverse transfer capacitance | — | 2.7 | — | | |
| C _{O(er)} | Output capacitance, energy related ^b | — | 164 | — | pF | V _{GS} =0V, V _{DS} =0V to 400V |
| C _{O(tr)} | Output capacitance, time related ^c | — | 280 | — | | |
| Q _G | Total gate charge | — | 16 | 24 | nC | V _{DS} =400V, V _{GS} =0V to 10V, I _D =22A |
| Q _{GS} | Gate-source charge | — | 6 | — | | |
| Q _{GD} | Gate-drain charge | — | 5 | — | | |
| Q _{OSS} | Output charge | — | 112 | — | nC | V _{GS} =0V, V _{DS} =0V to 400V |
| t _{D(on)} | Turn-on delay | — | 40 | — | ns | V _{DS} =400V, V _{GS} =0V to 10V, I _D =22A, R _{G(on)} =47Ω, R _{G(off)} =39Ω, Z _{FB} =120Ω at 100MHz (See Figure 14) |
| t _R | Rise time | — | 5 | — | | |
| t _{D(off)} | Turn-off delay | — | 40 | — | | |
| t _F | Fall time | — | 8 | — | | |
| E _{off} | Turn off Energy | — | 72.7 | — | μJ | V _{DS} =400V, V _{GS} =0V to 12V, R _G =47Ω, I _D =22A, Z _{FB} =180Ω at 100MHz |
| E _{on} | Turn on Energy | — | 53.8 | — | μJ | |

Notes:

- Dynamic on-resistance; see Figures 17 and 18 for test circuit and conditions
- Equivalent capacitance to give same stored energy as V_{DS} rises from 0V to 400V
- Equivalent capacitance to give same charging time as V_{DS} rises from 0V to 400V

TP65H050G4YS

Electrical Parameters ($T_J=25^\circ\text{C}$ unless otherwise stated)

| Symbol | Parameter | Min | Typ | Max | Unit | Test Conditions |
|---------------------------------------|------------------------------------|-----|-----|------|------------------|--|
| Reverse Device Characteristics | | | | | | |
| I_S | Reverse current | — | — | 22 | A | $V_{GS}=0V$, $T_C=100^\circ\text{C}$, $\leq 25\%$ duty cycle |
| V_{SD} | Reverse voltage ^a | — | 2.2 | 2.6 | V | $V_{GS}=0V$, $I_S=22A$ |
| | | — | 1.6 | 1.9 | | $V_{GS}=0V$, $I_S=11A$ |
| t_{RR} | Reverse recovery time | — | 50 | — | ns | $I_S=22A$, $V_{DD}=400V$ |
| Q_{RR} | Reverse recovery charge | — | 0 | — | nC | |
| $(di/dt)_{RM}$ | Reverse diode di/dt ^b | — | — | 2500 | A/ μs | Circuit implementation and parameters on page 3 |

Notes:

- a. Includes dynamic $R_{DS(on)}$ effect
- b. Reverse conduction di/dt will not exceed this max value with recommended R_G .

TP65H050G4YS

Typical Characteristics ($T_C=25^\circ\text{C}$ unless otherwise stated)

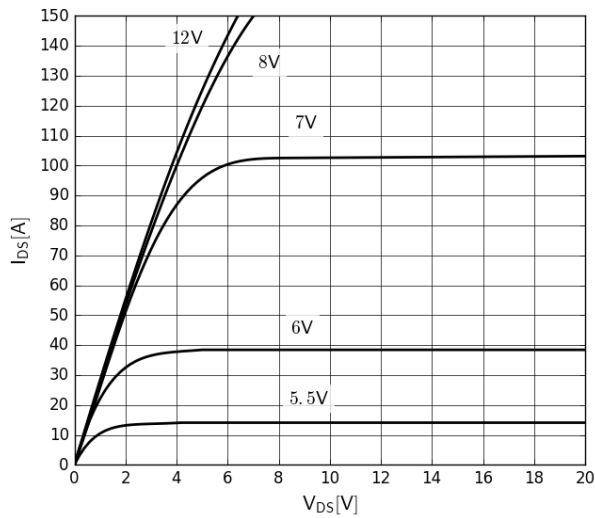


Figure 1. Typical Output Characteristics $T_J=25^\circ\text{C}$
Parameter: V_{GS}

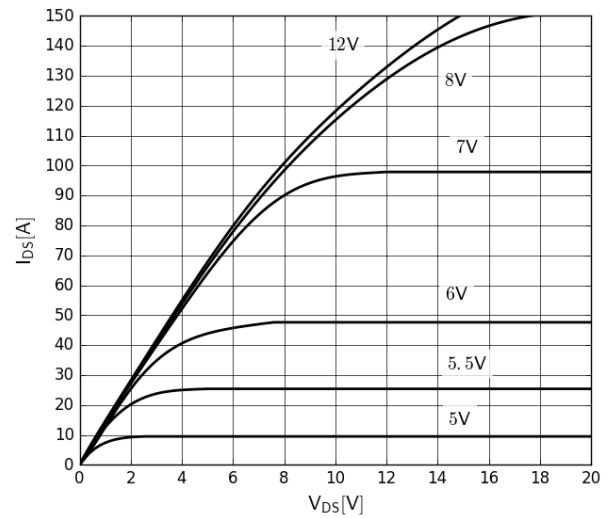


Figure 2. Typical Output Characteristics $T_J=150^\circ\text{C}$
Parameter: V_{GS}

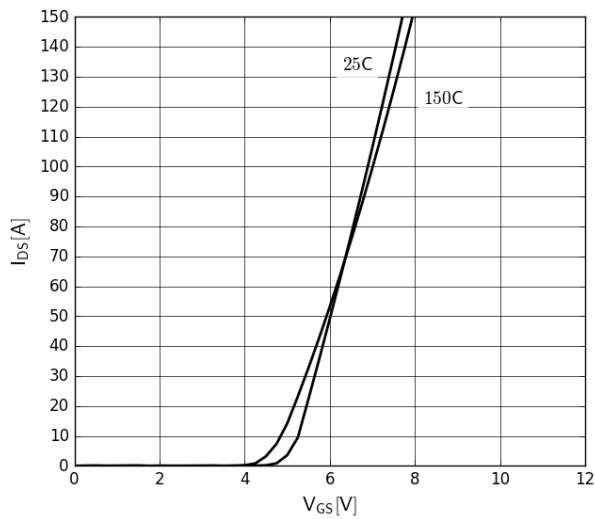


Figure 3. Typical Transfer Characteristics
 $V_{DS}=20\text{V}$, parameter: T_J

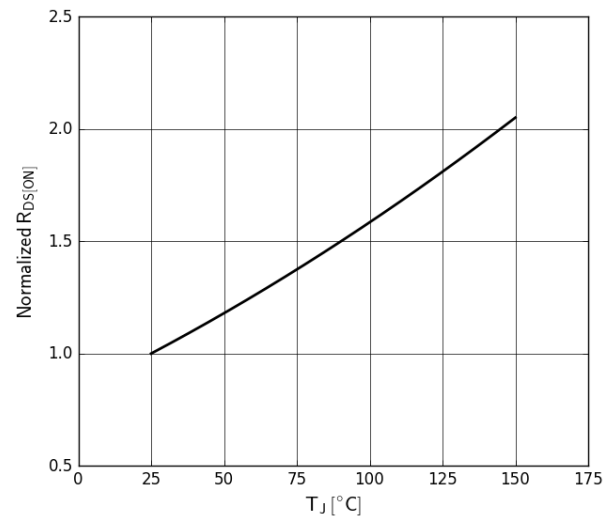


Figure 4. Normalized On-resistance
 $I_D=22\text{A}$, $V_{GS}=10\text{V}$

TP65H050G4YS

Typical Characteristics ($T_C=25^\circ\text{C}$ unless otherwise stated)

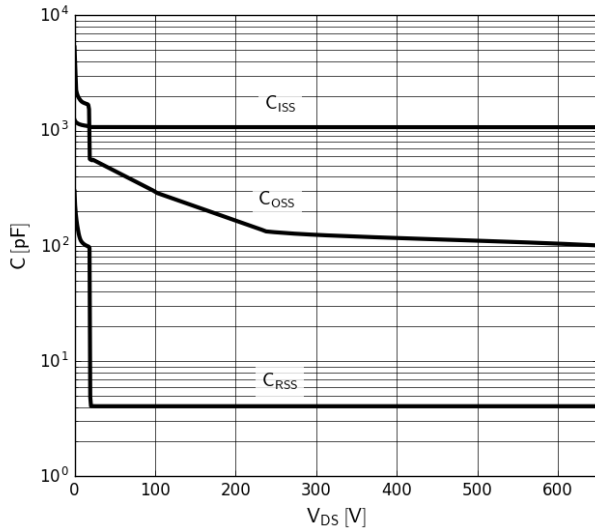


Figure 5. Typical Capacitance

$V_{GS}=0V$, $f=500kHz$

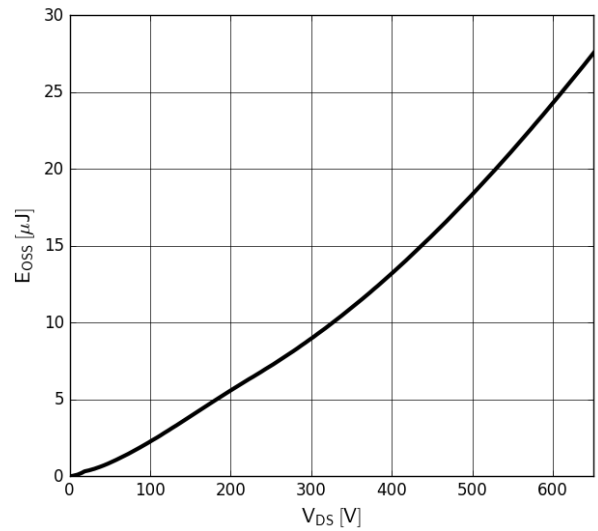


Figure 6. Typical C_{OSS} Stored Energy

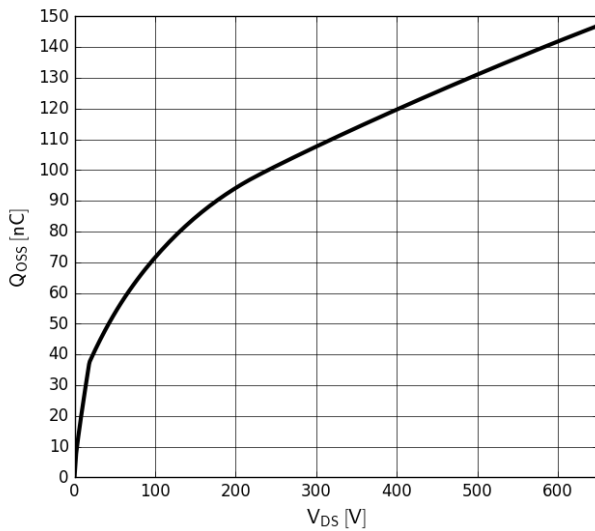


Figure 7. Typical Q_{OSS}

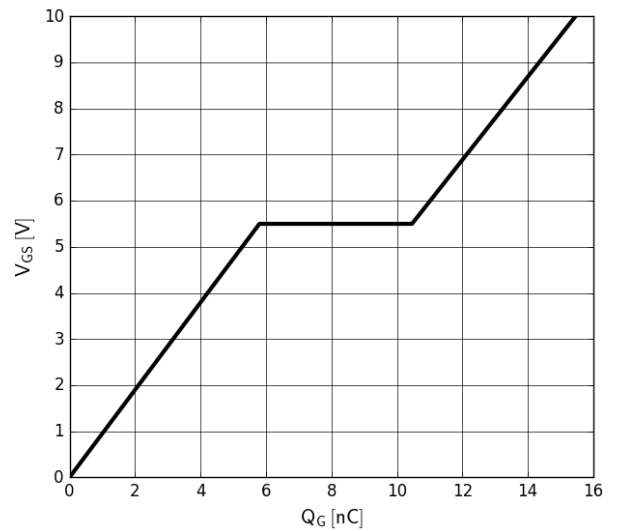


Figure 8. Typical Gate Charge

$I_{DS}=22A$, $V_{DS}=400V$

TP65H050G4YS

Typical Characteristics ($T_C=25^\circ\text{C}$ unless otherwise stated)

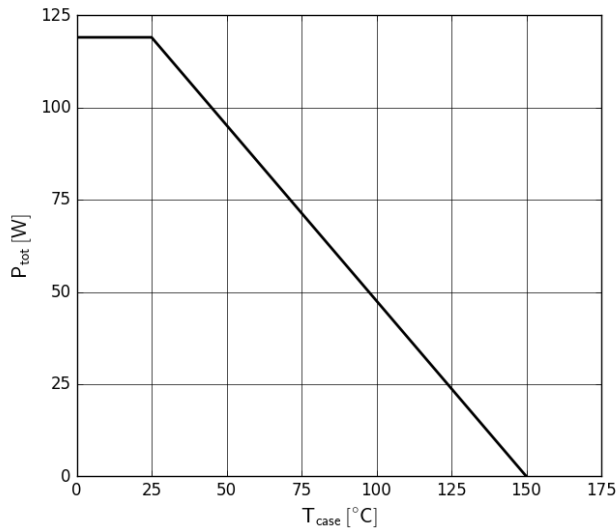


Figure 9. Power Dissipation

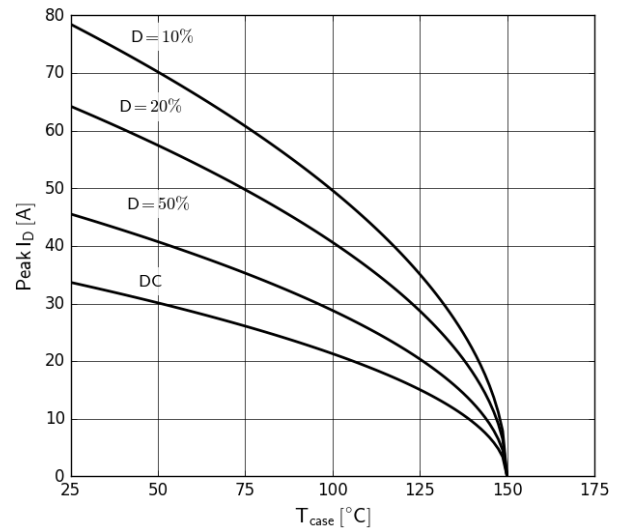


Figure 10. Current Derating
Pulse width $\leq 10\mu\text{s}$, $V_{GS} \geq 10\text{V}$

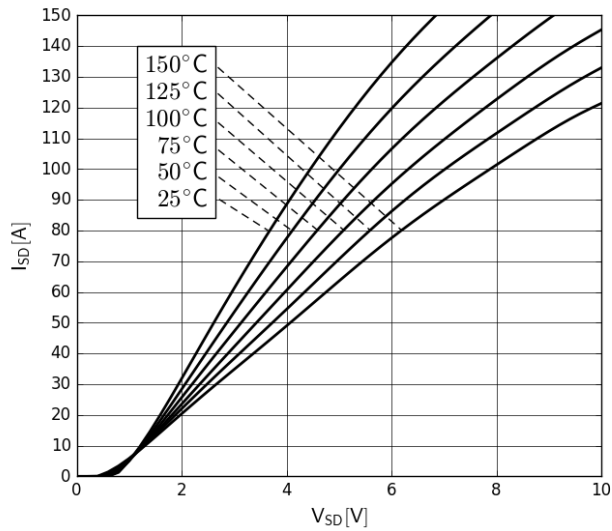


Figure 11. Forward Characteristics of Rev. Diode
 $I_S=f(V_{SD})$, parameter: T_J

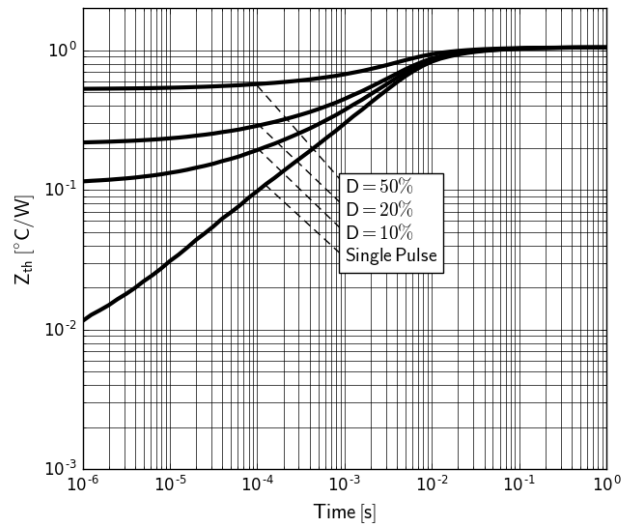


Figure 12. Transient Thermal Resistance

TP65H050G4YS

Typical Characteristics ($T_C=25^\circ\text{C}$ unless otherwise stated)

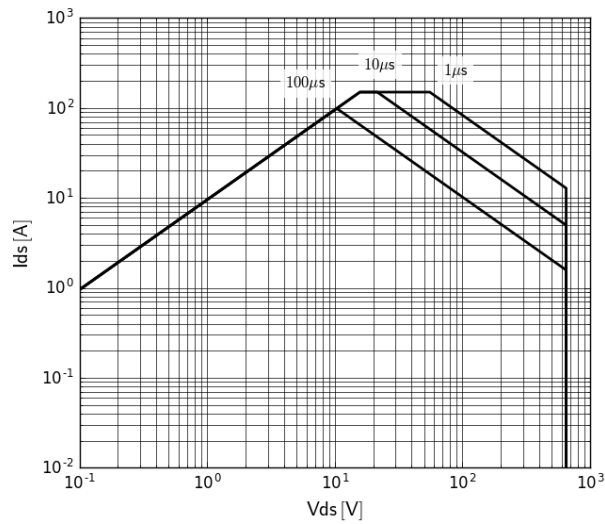
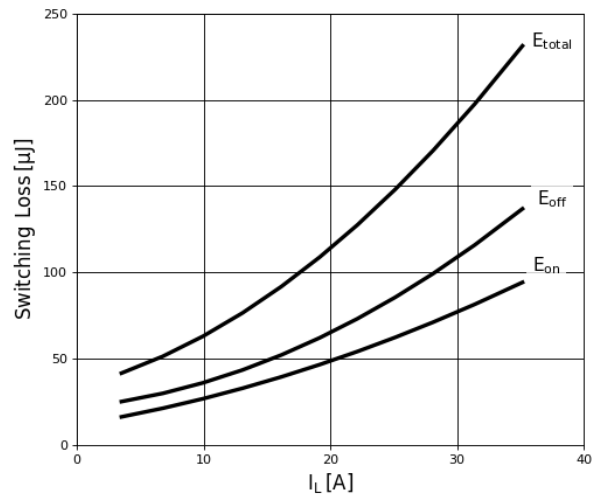


Figure 13. Safe Operating Area $T_C=25^\circ\text{C}$



**Figure 14. Inductive Switching Loss $T_C=25^\circ\text{C}$
 $R_g=47\Omega$, $V_{DS}=400\text{V}$**

Test Circuits and Waveforms

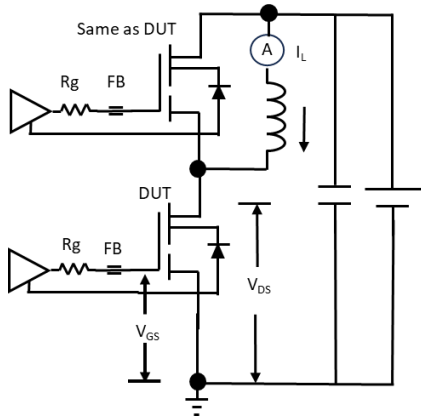
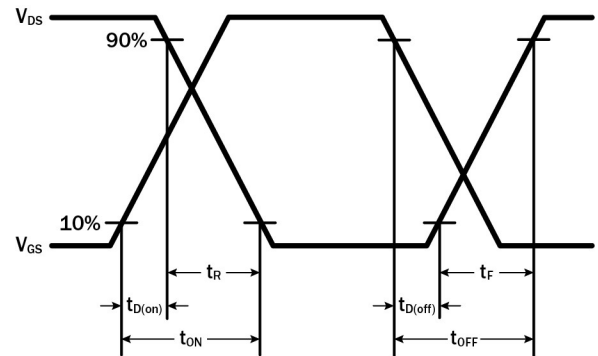


Fig-

13. Switching Time Test Circuit
(see circuit implementation on page 3)



ure

Figure 14. Switching Time Waveform

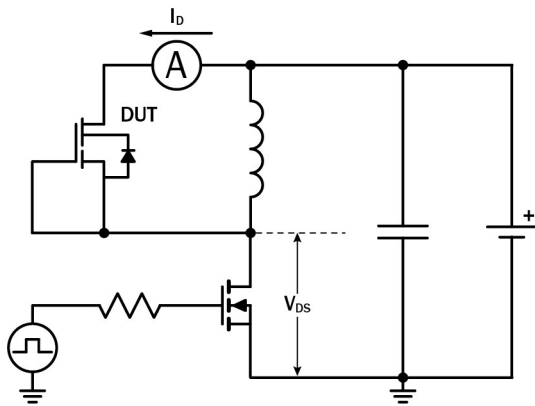


Figure 15. Diode Characteristics Test Circuit

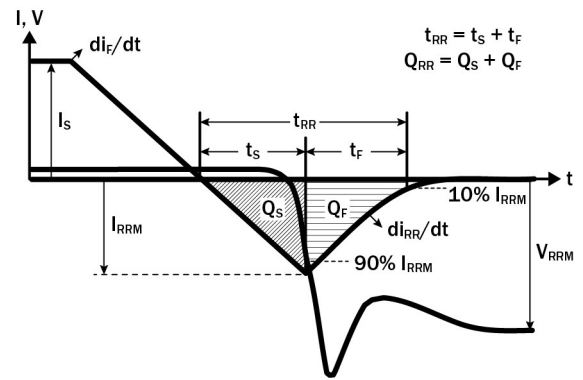


Figure 16. Diode Recovery Waveform

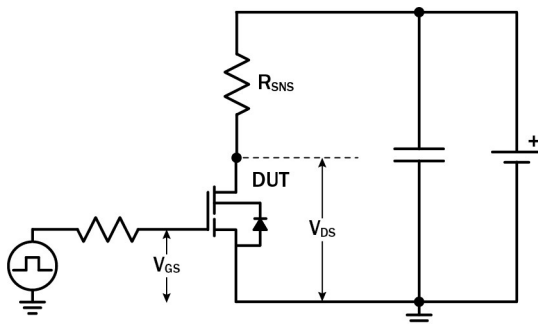


Figure 17. Dynamic $R_{DS(on)eff}$ Test Circuit

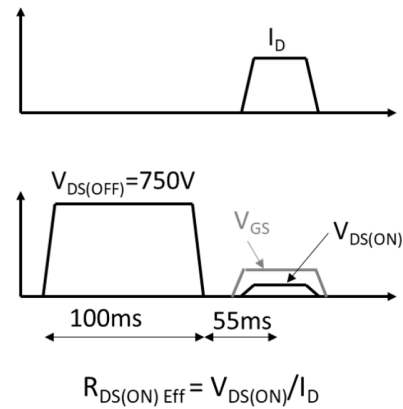


Figure 18. Dynamic $R_{DS(on)eff}$ Waveform

TP65H050G4YS

Design Considerations

The fast switching of GaN devices reduces current-voltage crossover losses and enables high frequency operation while simultaneously achieving high efficiency. However, taking full advantage of the fast switching characteristics of GaN switches requires adherence to specific PCB layout guidelines and probing techniques.

Before evaluating Transphorm GaN devices, see application note [Printed Circuit Board Layout and Probing for GaN Power Switches](#). The table below provides some practical rules that should be followed during the evaluation.

When Evaluating Transphorm GaN Devices:

| DO | DO NOT |
|---|--|
| Minimize circuit inductance by keeping traces short, both in the drive and power loop | Twist the pins of TO-220 or TO-247 to accommodate GDS board layout |
| Minimize lead length of TO-220 and TO-247 package when mounting to the PCB | Use long traces in drive circuit, long lead length of the devices |
| Use shortest sense loop for probing; attach the probe and its ground connection directly to the test points | Use differential mode probe or probe ground clip with long wire |
| See AN0003 : Printed Circuit Board Layout and Probing | |

GaN Design Resources

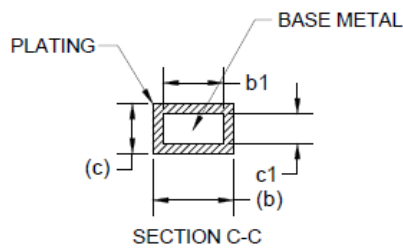
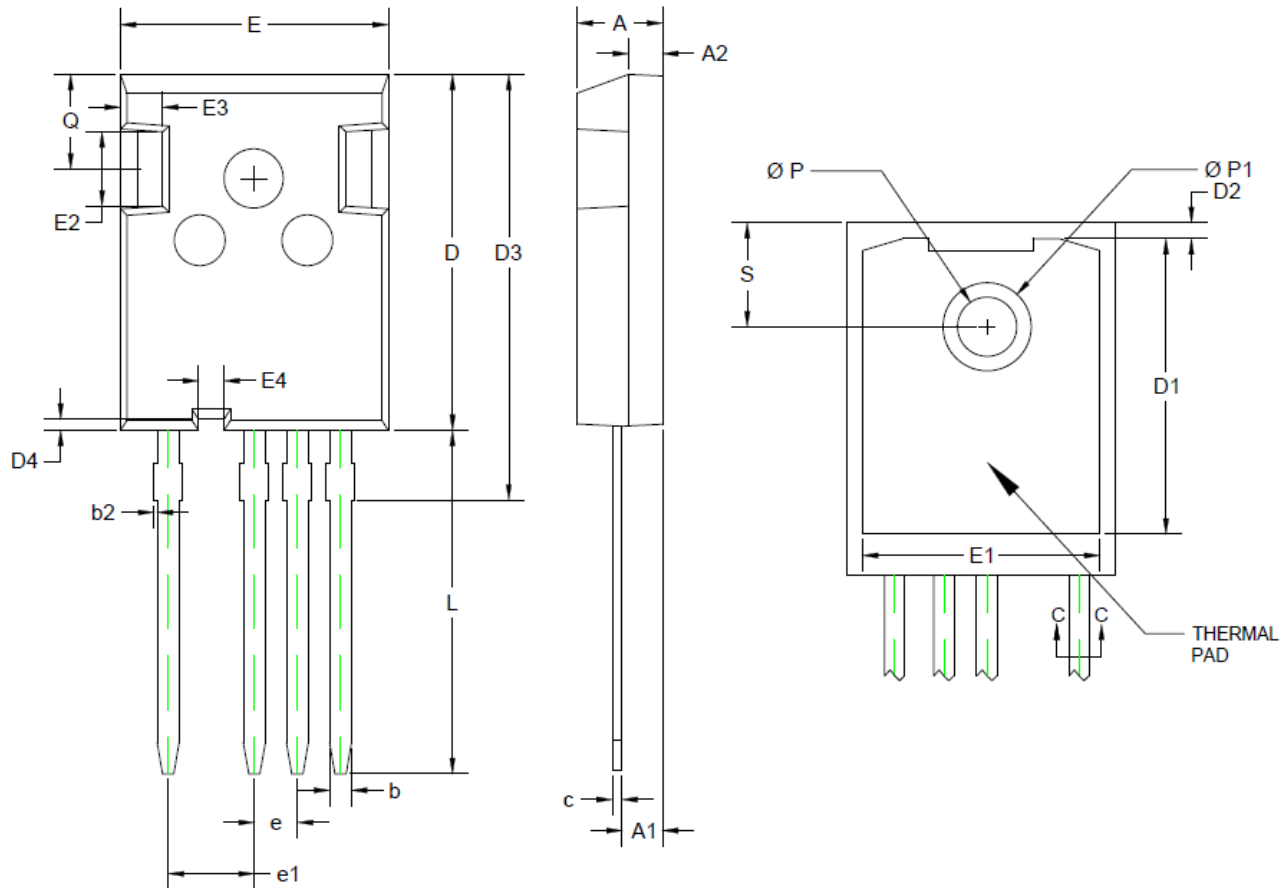
The complete technical library of GaN design tools can be found at transphormusa.com/design:

- Evaluation kits
- Application notes
- Design guides
- Simulation models
- Technical papers and presentations

TP65H050G4YS

Mechanical

4 Lead TO-247 Package



NOTES:

1. DIMENSIONS D & E DO NOT INCLUDE MOLD FLASH. MOLD FLASH SHALL NOT EXCEED 0.127 MM (0.005") PER SIDE. THESE DIMENSIONS ARE MEASURED AT THE OUTERMOST EXTREME OF THE PLASTIC BODY.
2. THERMAL PAD CONTOUR IS OPTIONAL WITHIN DIMENSIONS D1 & E1.
3. OUTLINE CONFORMS TO JEDEC TO-247AD.

| SYMBOL | MILLIMETERS | | | INCHES | | |
|------------------------|-------------|-------|-------|-----------|-------|-------|
| | MIN | NOM | MAX | MIN | NOM | MAX |
| A | 4.90 | 5.00 | 5.10 | 0.192 | 0.196 | 0.201 |
| A1 | 2.31 | 2.41 | 2.51 | 0.090 | 0.094 | 0.099 |
| A2 | 1.90 | 2.00 | 2.10 | 0.074 | 0.078 | 0.083 |
| b | 1.16 | - | 1.29 | 0.045 | - | 0.051 |
| b1 | 1.15 | 1.20 | 1.25 | 0.045 | 0.047 | 0.050 |
| b2 | 0 | - | 0.20 | 0 | - | 0.008 |
| c | 0.59 | - | 0.66 | 0.023 | - | 0.027 |
| c1 | 0.58 | 0.60 | 0.62 | 0.022 | 0.023 | 0.025 |
| D | 20.90 | 21.00 | 21.10 | 0.822 | 0.826 | 0.831 |
| D1 | 16.25 | 16.55 | 16.85 | 0.639 | 0.651 | 0.664 |
| D2 | 1.05 | 1.20 | 1.35 | 0.041 | 0.047 | 0.054 |
| D3 | 24.97 | 25.12 | 25.27 | 0.983 | 0.988 | 0.995 |
| D4 | 0.55 | 0.65 | 0.75 | 0.021 | 0.025 | 0.030 |
| E | 15.70 | 15.80 | 15.90 | 0.618 | 0.622 | 0.627 |
| E1 | 13.10 | 13.30 | 13.50 | 0.515 | 0.523 | 0.532 |
| E2 | 4.90 | 5.00 | 5.10 | 0.192 | 0.196 | 0.201 |
| E3 | 2.40 | 2.50 | 2.60 | 0.094 | 0.098 | 0.103 |
| E4 | 1.40 | 1.50 | 1.60 | 0.055 | 0.059 | 0.064 |
| e | 2.44 | 2.54 | 2.64 | 0.096 | 0.100 | 0.105 |
| e1 | 4.98 | 5.08 | 5.18 | 0.196 | 0.200 | 0.205 |
| L | 19.80 | 19.92 | 20.10 | 0.779 | 0.784 | 0.792 |
| P | 3.50 | 3.60 | 3.70 | 0.137 | 0.141 | 0.146 |
| P1 | - | - | 7.40 | - | - | 0.292 |
| Q | 5.60 | - | 6.00 | 0.220 | - | 0.237 |
| S | 6.15 BSC | | | 0.242 BSC | | |
| TO-247 4L TP65HXXXG4YS | | | | | | |
| transphorm | | | | | | |

Mouser Electronics

Authorized Distributor

Click to View Pricing, Inventory, Delivery & Lifecycle Information:

[Transphorm:](#)

[TP65H050G4YS](#)