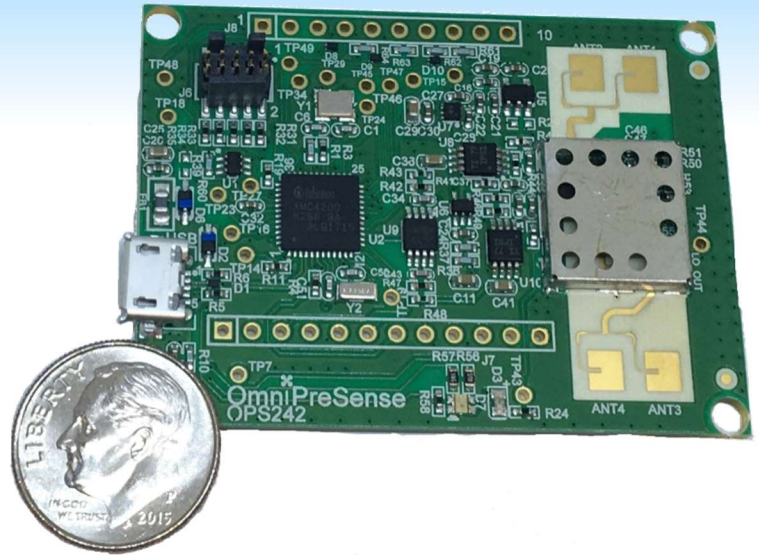


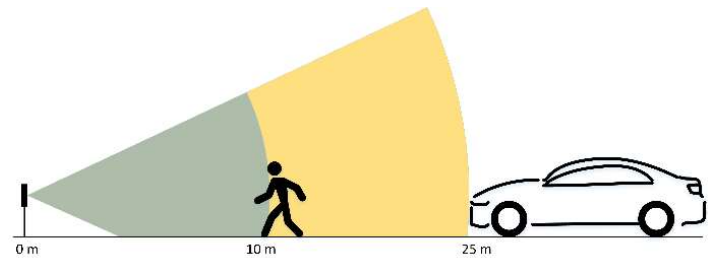
OmniPreSense OPS242 Short-Range Radar

OmniPreSense's OPS242 is complete short-range radar (SRR) solution providing motion detection, speed, and direction reporting. All radar signal processing is done on board and a simple API reports the processed data. Flexible control over the reporting format, sample rate, and module power levels are provided. The OPS242 carries FCC modular approval, simplifying development and regulatory certifications for production release.

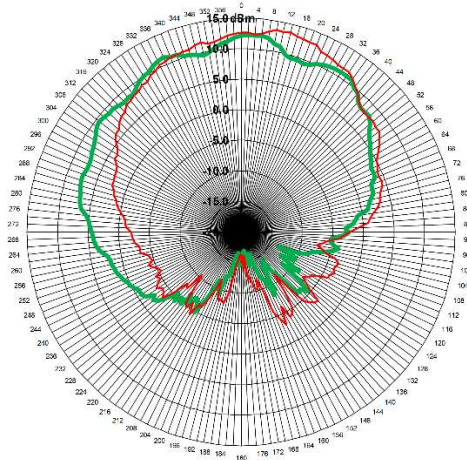
The OPS242 module can be connected to any Smart USB host (Raspberry Pi, Android device supporting OTG, PC or Mac). Additional processing and/or communication to the cloud can be performed for further data analysis or networked action.



OPS242 Sensor



OPS242 Detection Range



Antenna Pattern

Features

- 1-25m (3-80') detection range
- Speed reporting up to 348mph
- Direction reporting (Inbound/Outbound)
- Wide 76° beam width (-3 dB)
- Simple API control over USB interface
- FCC modular approval
- Industrial temp operation (-40 to +85°C)
- 1.4W Active power, 0.6W Idle power
- Smaller form factor 40 x 54 x 8 mm, 10g

Applications

- IoT Sensor
- Robotics
- Drones

Functionality

- Traffic Monitoring
- Presence Detection
- Speed/Direction Reporting
- Collision Avoidance

www.omnipresense.com

OPS-PB-002-B

Mouser Electronics

Authorized Distributor

Click to View Pricing, Inventory, Delivery & Lifecycle Information:

[OmniPreSense:](#)

[OPS242-A-CW-RP](#)