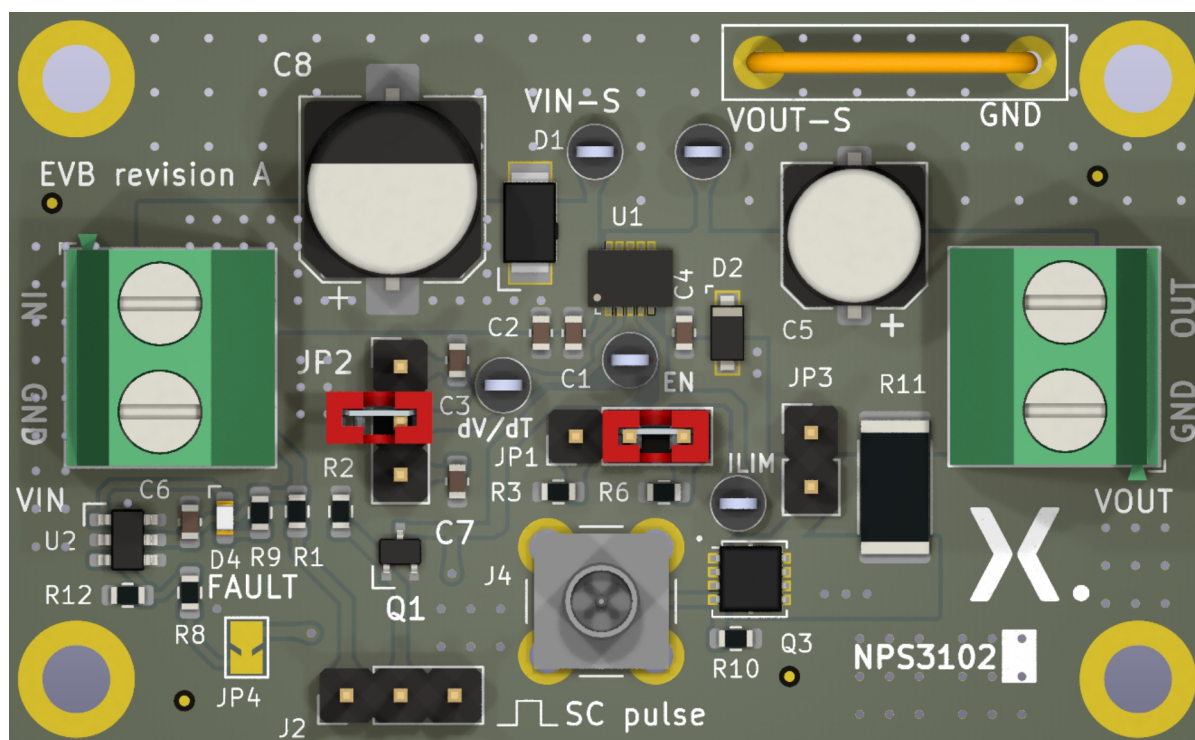


**NPS3102A; NPS3102B 12 V, 2 A-13.5 A,  
17 mΩ eFuse evaluation board**



**Abstract:** The NEVB-NPS3102A; NEVB-NPS3102B evaluation board is a 4 layer PCB equipped with either a NPS3102A or NPS3102B electronic fuse. With this evaluation PCB the user can evaluate the performance of the device in several application scenarios.

**Keywords:** NPS3102A; NPS3102B electronic fuse evaluation board (EVB)

## 1. Introduction

The NPS3102A; NPS3102B is an electronic fuse designed for 12 V systems, featuring an adjustable current clamp, thermal protection, inrush current control, and an internal overvoltage clamp to shield downstream devices from high voltage transients during hot switching.

Two versions are available: Version A latches during faults, requiring a reset afterward, while Version B includes auto-retry circuitry that restarts after fault removal. Each version has a dedicated evaluation board: NEVB-NPS3102A and NEVB-NPS3102B. The eFuses on these boards can be swapped (replacing NPS3102A with NPS3102B or vice versa) to explore differences between latching and auto-retry fuses.

The evaluation PCB contains one eFuse for testing in various scenarios. It integrates an NMOST transistor for short circuit monitoring, comparator circuitry with LED fault indication, selectable output voltage ramp times, and adjustable current limit settings.

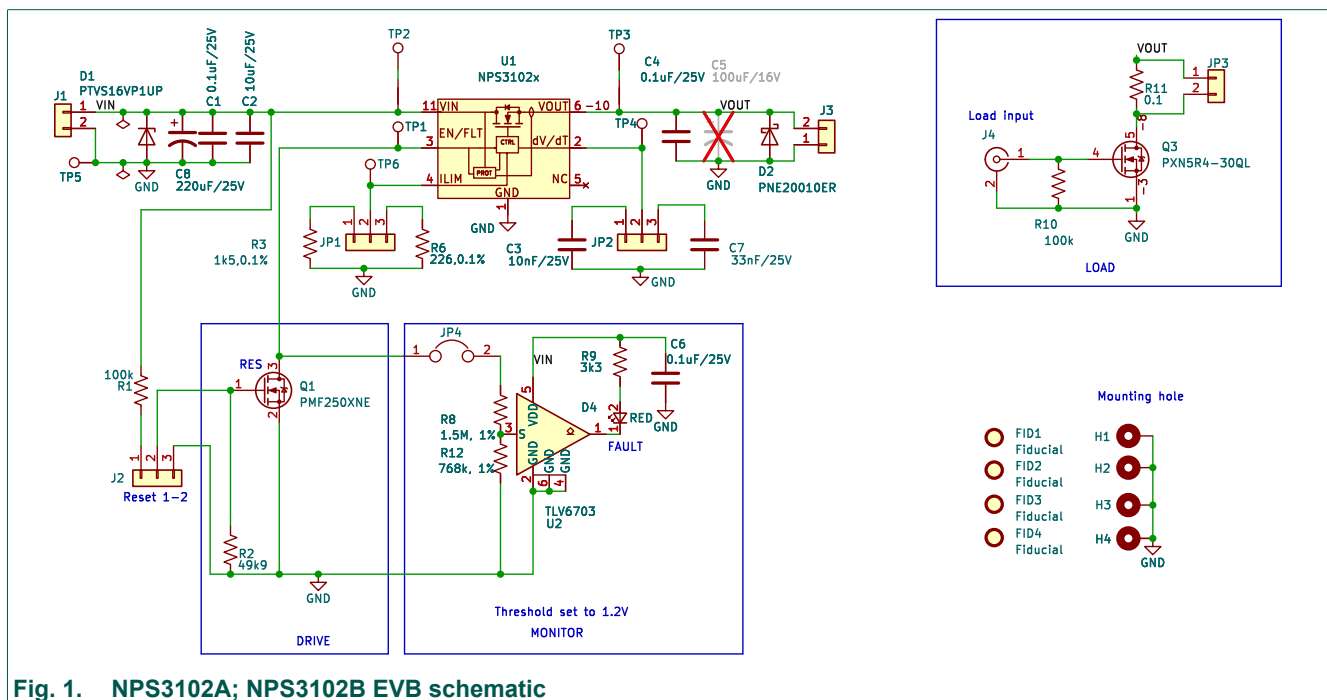
## 2. Features

The following features are available on this evaluation board:

- Two evaluation boards available:
  - NEVB-NPS3102A
  - NEVB-NPS3102B
- Input operating voltage range ( $V_{IN}$ ): 9 V to 18 V
- Continuous DC load current: 11 A ( $T_{amb} = 25\text{ }^{\circ}\text{C}$ )
- Selectable current limit
- Selectable output slew rate
- Fault detection indicator
- Short circuit FET
- IN and OUT transient protection diodes
- Open drain enable drive

## 3. Schematic

**Fig. 1** shows the schematic of the NEVB-NPS3102A; NEVB-NPS3102B evaluation board. Explanation of the test pins, jumpers and other features can be found in the next sections.



4. PCB layout

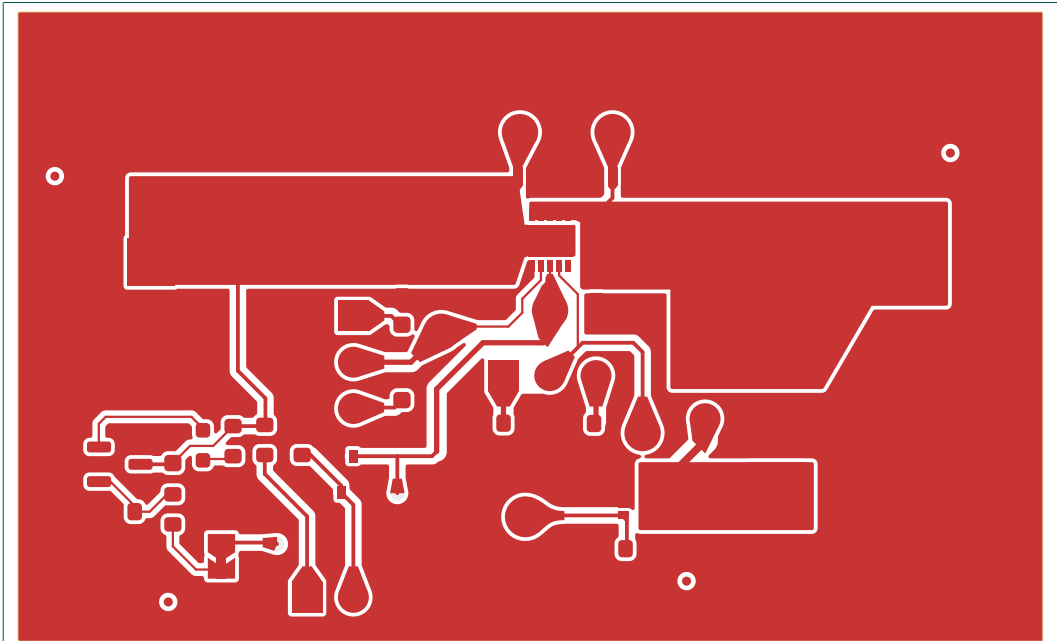


Fig. 2. Top copper layer

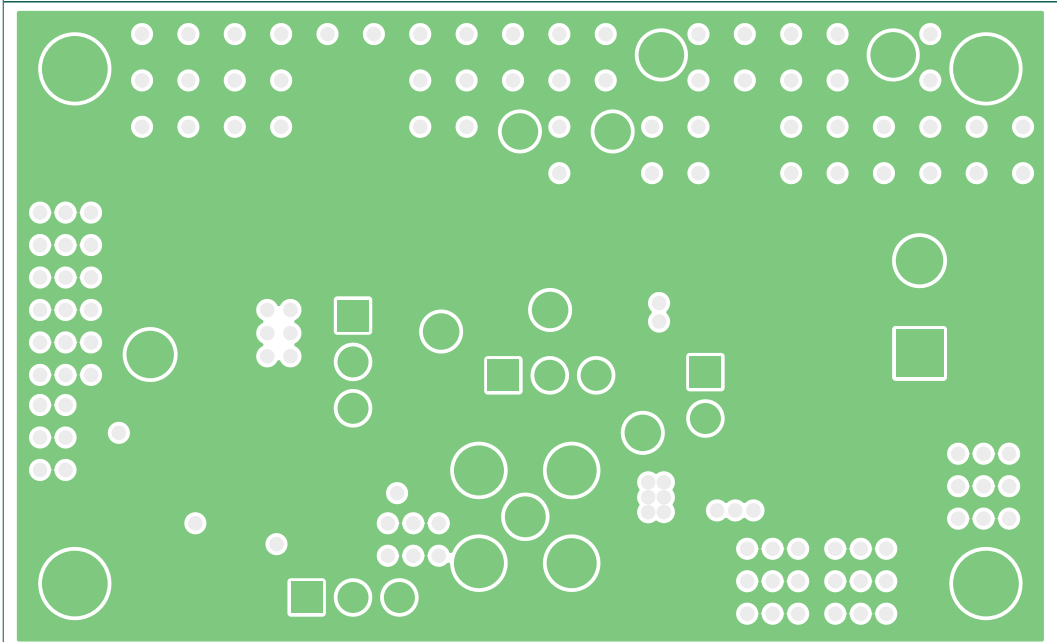
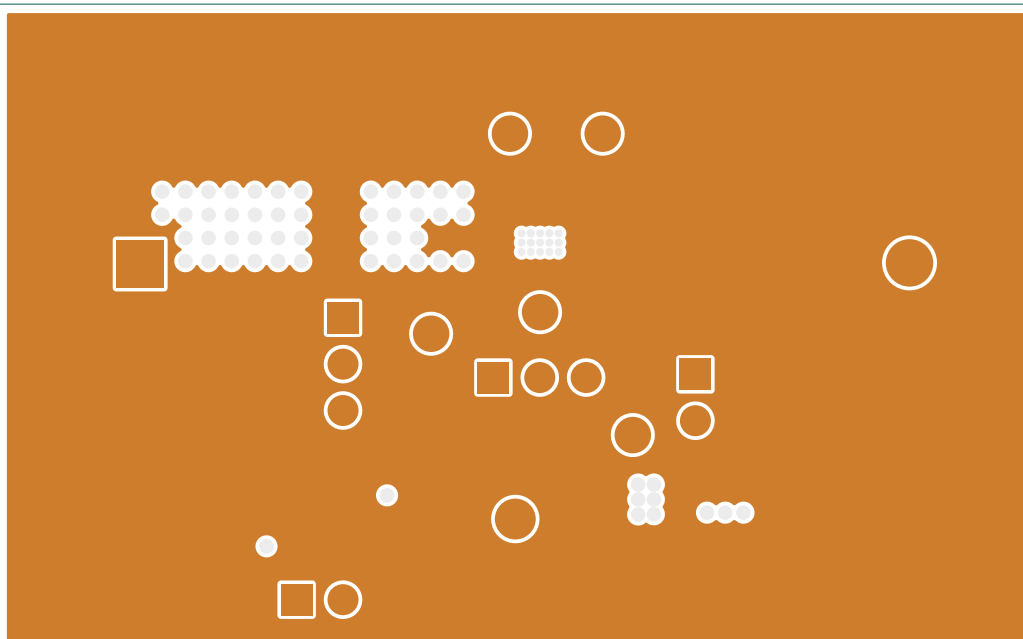
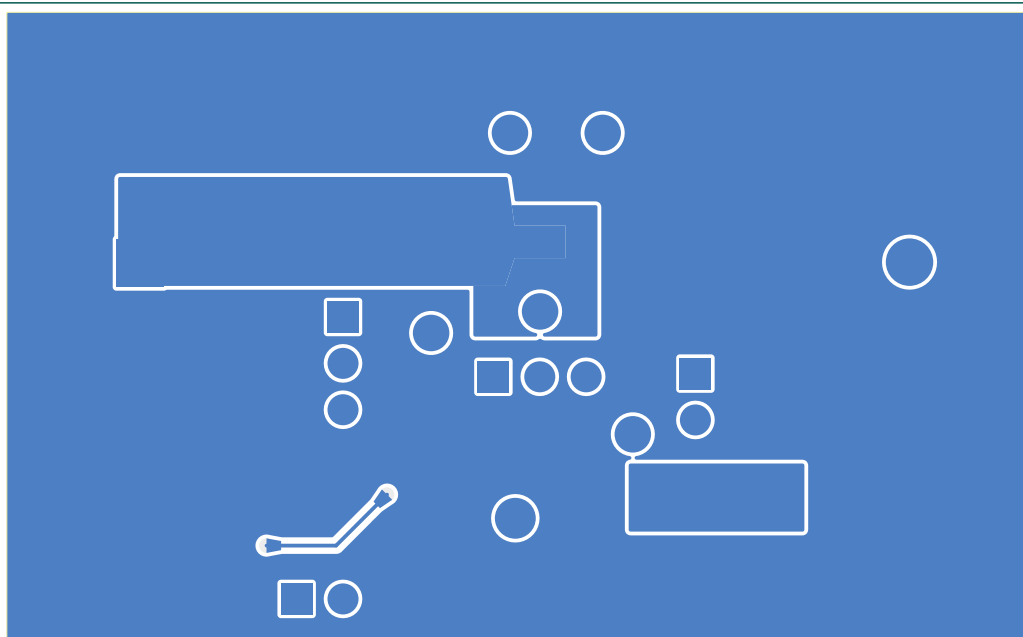


Fig. 3. Inner 1 copper layer



**Fig. 4. Inner 2 copper layer**



**Fig. 5. bottom copper layer**

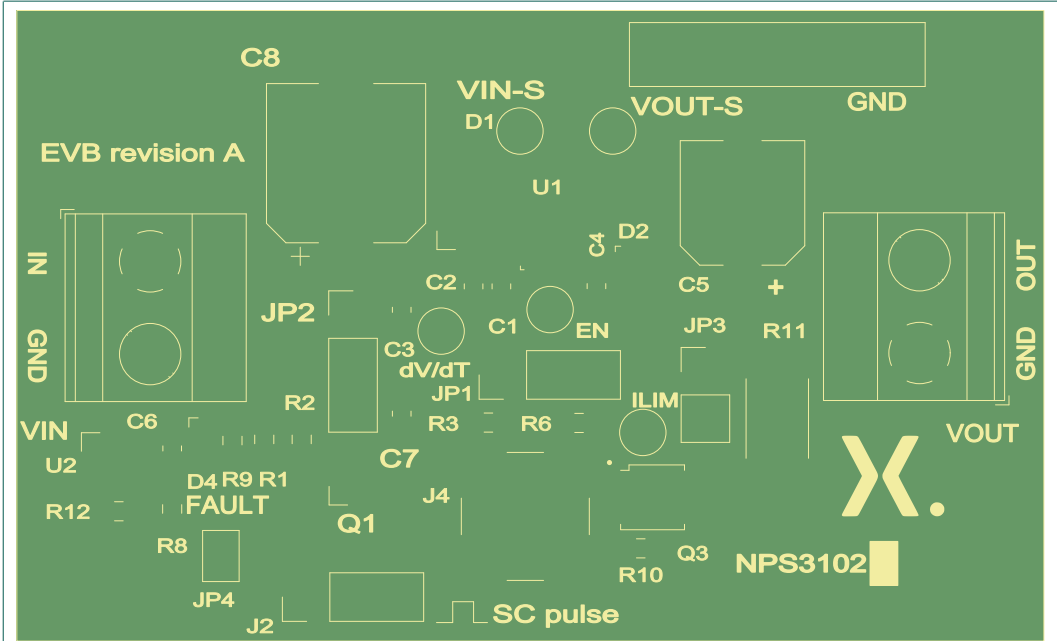


Fig. 6. Component placement top

5. Board stackup

The copper on the printed circuit boards serves as both a conductor and a means to dissipate heat from the exposed pad into the surrounding air. When subjected to high currents and voltage clamping, the device's dissipation can lead to a junction temperature exceeding 125 °C, triggering thermal protection. To achieve low thermal and ground impedance, a 4 layer PCB has been employed. The stackup is illustrated in Fig. 7.

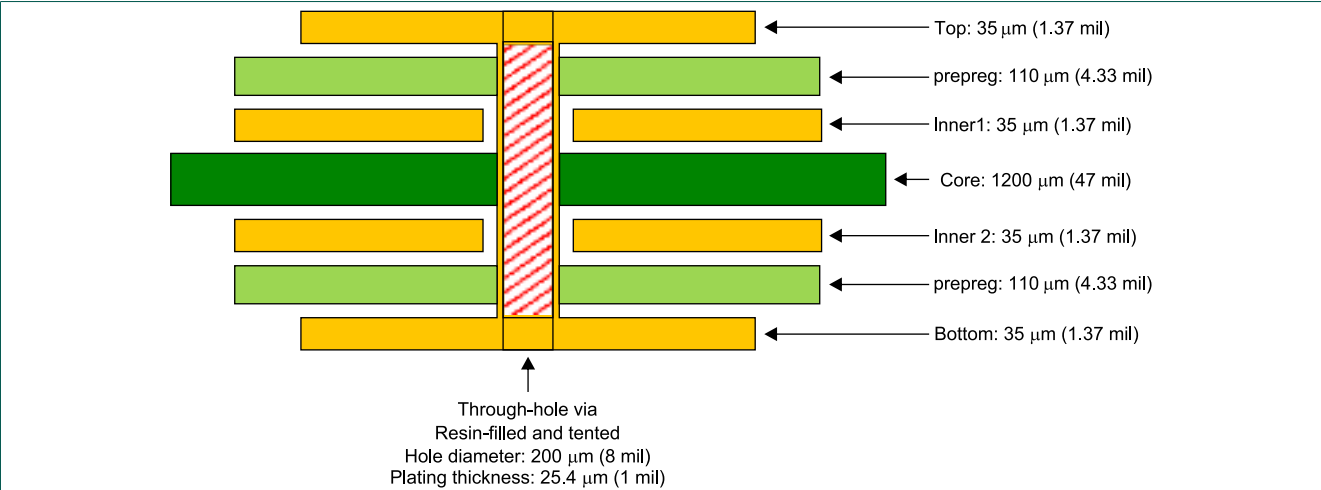


Fig. 7. PCB layer stackup

6. Bill of material

Table 1. Bill of Material (BOM)

Reference	Quantity	Value	Manufacturer name	Manufacturer part number
C1, C4, C6	3	0.1 µF/25 V	KEMET	C0603C104K3RAC7013
C2	1	10 µF/25 V	Murata Electronics	GRM188R61E106MA73D
C3	1	10 nF/25 V	KEMET	C0603C103J3RACTU
C5	1	Not populated	KEMET	EXV107M016A9HAA
C7	1	33 nF/25 V	YAGEO	AC0603JRX7R8BB333
C8	1	220 µF/25 V	Rubycon	25PHV220M8X10.5
D1	1	PTVS16VP1UP	Nexperia	PTVS16VP1UP,115
D2	1	PNE20010ER	Nexperia	PNE20010ERX
D4	1	RED	Kingbright	APHD1608LSURCK
J1, J3	2	Conn_01x02	CUI Devices	TB007-508-02BE
J4	1	Conn_Coaxial	Linx Technologies	CONSMB001-1-G
J2, JP1, JP2	3	Conn_01x03	Würth Elektronik	61300311121
JP3	1	Dual_testpoint_(2p_header)	SAMTEC	TSW-102-07-L-S
Q1	1	PMF250XNE	Nexperia	PMF250XNEX
Q3	1	PXN5R4-30QL	Nexperia	PXN5R4-30QLJ
R1, R10	2	100k	YAGEO	RT0603FRE10100KL
R2	1	49k9	YAGEO	RT0603FRE0749K9L
R3	1	1k5, 0.1%	YAGEO	RT0603BRD071K5L
R6	1	226, 0.1%	YAGEO	RT0603BRD07226RL
R8	1	1.5 M, 1%	Vishay / Beyschlag	MCT06030C1504FP500
R9	1	3k3	YAGEO	RT0603FRE073K3L
R11	1	0.1	Bourns	CRA2512-FZ-R100ELF
R12	1	768k, 1%	YAGEO	RC0603FR-07768KL
TP1, TP2, TP3, TP4, TP6	2	TestPoint	Keystone Electronics	5001
TP5	1	TestPoint	Keystone Electronics	1430-5
U1	1	NPS3102A or NPS3102B	Nexperia	NPS3102AGB or NPS3102BGB
U2	1	TLV6703	Texas Instruments	TLV6703DDCT
JP1, JP2	2	Jumper Red	Harwin	M7581-46

7. Test setup and operation

Fig. 8 depicts the evaluation board which is initially set up for a maximum device current of 13.5 A and output slew rate configured at 1 ms. Connect the input voltage to J1, and the load circuitry to J3.

To test short circuit behavior, connect a pulse generator with a 5 V amplitude to SMB connector J4. Use JP3 to measure the voltage drop across the 100 mΩ short-circuit resistor. A fault condition will be indicated by LED D4.

Jumper JP2 can be used to change the output slew rate to either 3 ms or 10 ms. The current limit can be changed by means of JP1. Table 3 explains the jumper settings and associated values.

Placing a jumper to J2 pin 1-2 disables the device and resets the latch in case of a NPS3102A. A pulse generator can be connected to J2 pin 2-3 enabling external control of the eFuse.

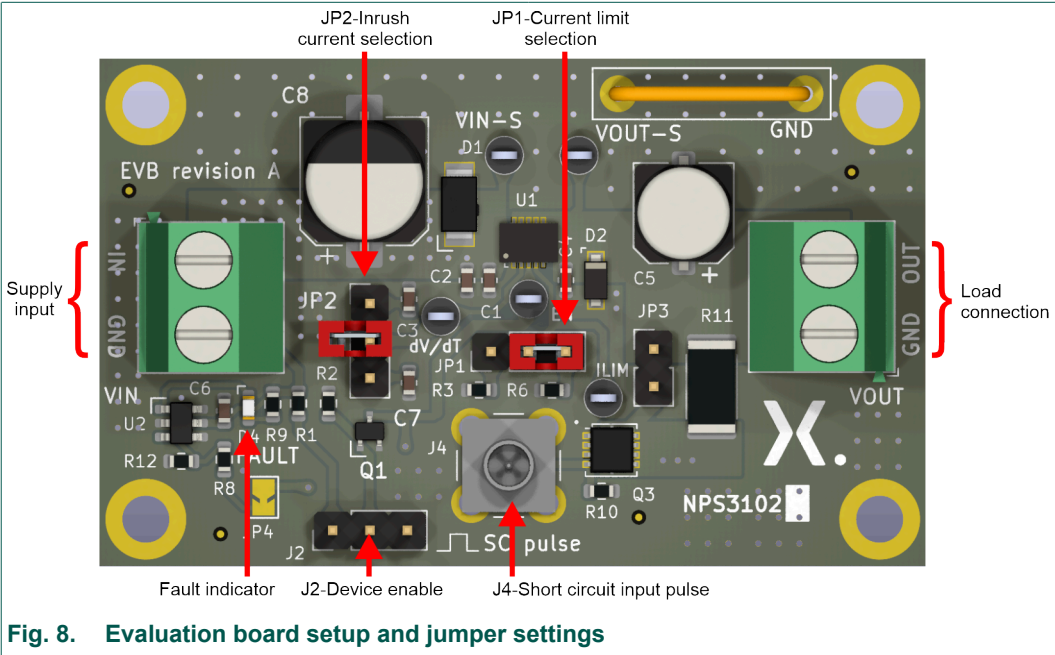


Table 2. Available test points

Test point	Connected to
TP1	EN/FLT
TP2	VIN-sense
TP3	VOUT-sense
TP4	dV/dt
TP5	Ground
TP6	ILIM

Table 3. Available jumper settings

Jumper	Pin connections		
	1-2	2-3	Open
JP1 – Current Limit	2 A	13.5 A	0 A
JP2 – Inrush Control	3 ms	10 ms	1 ms
J2 – Device Enable	Disable	External drive	Enable

## 8. Revision history

Table 4. Revision history

Revision number	Date	Description
UM90036 v.1	20240718	Initial version



## 9. Legal information

### Definitions

**Draft** — The document is a draft version only. The content is still under internal review and subject to formal approval, which may result in modifications or additions. Nexperia does not give any representations or warranties as to the accuracy or completeness of information included herein and shall have no liability for the consequences of use of such information.

### Disclaimers

**Limited warranty and liability** — Information in this document is believed to be accurate and reliable. However, Nexperia does not give any representations or warranties, expressed or implied, as to the accuracy or completeness of such information and shall have no liability for the consequences of use of such information. Nexperia takes no responsibility for the content in this document if provided by an information source outside of Nexperia.

In no event shall Nexperia be liable for any indirect, incidental, punitive, special or consequential damages (including - without limitation - lost profits, lost savings, business interruption, costs related to the removal or replacement of any products or rework charges) whether or not such damages are based on tort (including negligence), warranty, breach of contract or any other legal theory.

Notwithstanding any damages that customer might incur for any reason whatsoever, Nexperia's aggregate and cumulative liability towards customer for the products described herein shall be limited in accordance with the Terms and conditions of commercial sale of Nexperia.

**Right to make changes** — Nexperia reserves the right to make changes to information published in this document, including without limitation specifications and product descriptions, at any time and without notice. This document supersedes and replaces all information supplied prior to the publication hereof.

**Suitability for use** — Nexperia products are not designed, authorized or warranted to be suitable for use in life support, life-critical or safety-critical systems or equipment, nor in applications where failure or malfunction of an Nexperia product can reasonably be expected to result in personal injury, death or severe property or environmental damage. Nexperia and its suppliers accept no liability for inclusion and/or use of Nexperia products in such equipment or applications and therefore such inclusion and/or use is at the customer's own risk.

**Applications** — Applications that are described herein for any of these products are for illustrative purposes only. Nexperia makes no representation or warranty that such applications will be suitable for the specified use without further testing or modification.

Customers are responsible for the design and operation of their applications and products using Nexperia products, and Nexperia accepts no liability for any assistance with applications or customer product design. It is customer's sole responsibility to determine whether the Nexperia product is suitable and fit for the customer's applications and products planned, as well as for the planned application and use of customer's third party customer(s). Customers should provide appropriate design and operating safeguards to minimize the risks associated with their applications and products.

Nexperia does not accept any liability related to any default, damage, costs or problem which is based on any weakness or default in the customer's applications or products, or the application or use by customer's third party customer(s). Customer is responsible for doing all necessary testing for the customer's applications and products using Nexperia products in order to avoid a default of the applications and products or of the application or use by customer's third party customer(s). Nexperia does not accept any liability in this respect.

**Export control** — This document as well as the item(s) described herein may be subject to export control regulations. Export might require a prior authorization from competent authorities.

**Translations** — A non-English (translated) version of a document is for reference only. The English version shall prevail in case of any discrepancy between the translated and English versions.

### Trademarks

Notice: All referenced brands, product names, service names and trademarks are the property of their respective owners.

Contents

1. Introduction..... 2

2. Features..... 2

3. Schematic..... 2

4. PCB layout..... 3

5. Board stackup..... 5

6. Bill of material..... 6

7. Test setup and operation..... 7

8. Revision history..... 8

9. Legal information..... 9

© Nexperia B.V. 2024. All rights reserved

For more information, please visit: <http://www.nexperia.com>

For sales office addresses, please send an email to: [salesaddresses@nexperia.com](mailto:salesaddresses@nexperia.com)

Date of release: 18 July 2024

# Mouser Electronics

Authorized Distributor

Click to View Pricing, Inventory, Delivery & Lifecycle Information:

[Nexperia:](#)

[NEVB-NPS3102BUL](#) [NEVB-NPS3102AUL](#)