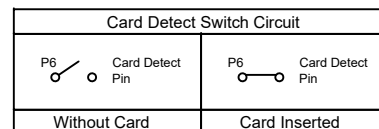
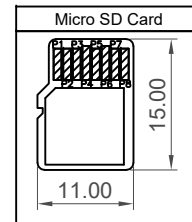


Recommended PCB Layout

As viewed from component side General Tolerance: ± 0.05

Solder Area
 Keep Out Area
 Component Outline

MICRO SD CARD PIN OUT		
Pin	Name	Description
P1	DAT2	Data Bit 2
P2	CD/DAT3	Card Detect/Data Bit 3
P3	CMD	Command Line
P4	V _{DD}	Supply Voltage 2.7v/3.6v
P5	CLK	Clock
P6	V _{SS}	Ground
P7	DAT0	Data Bit 0
P8	DAT1	Data Bit 1
P9	CD Pin	Card Detect Pin



Specifications

Material

Housing&Slider: LCP, UL94V-0, Black
 Terminal& Card Detect Pin: Phosphor Bronze
 Shell: Stainless Steel
 Coil Spring: SWP
 Latch: Stainless Steel

Plating

Terminal:

Under-plating: 50μ" min. Nickel all over
 Contact Area: Gold Flash
 Soldering Area: Gold Flash

Shell :

Under-plating : 50μ" Nickel all over
 Soldering Area : Gold Flash

Card Detect Pin:

Under-plating: 50μ" min. Nickel all over
 Contact Area: Gold Flash
 Solder Tail : Gold Flash
 Coil Spring&Latch: Clear

Electrical

Voltage Rating: 10 V AC max
 Current Rating: 0.5 A max.
 Contact Resistance: 100mΩ max.
 Insulating Resistance: 1000MΩ min. at 500 V DC
 Dielectric Withstand Voltage: 500 V AC

Mechanical & Environmental

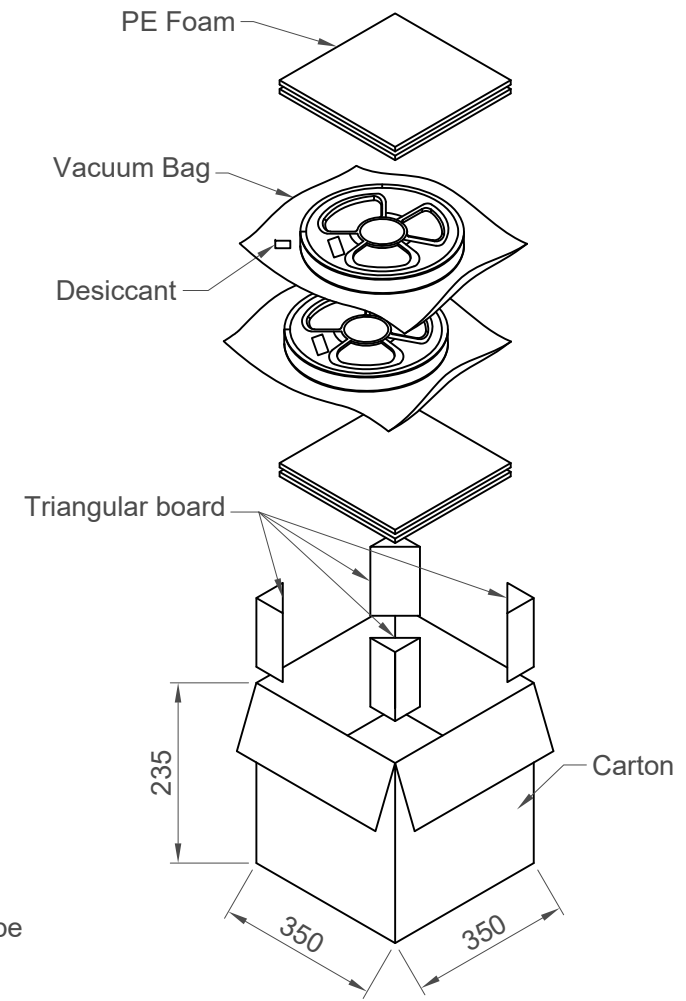
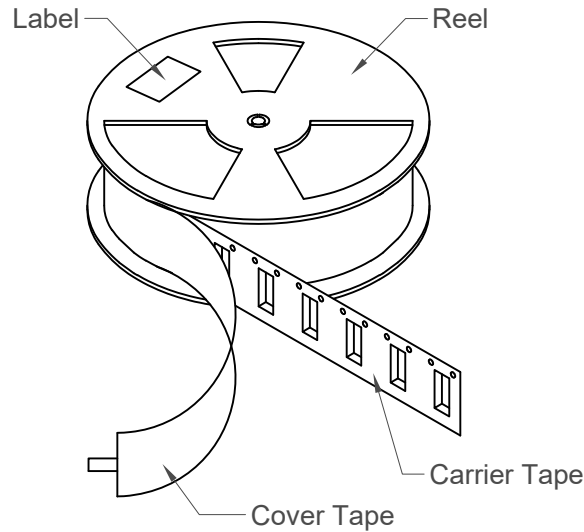
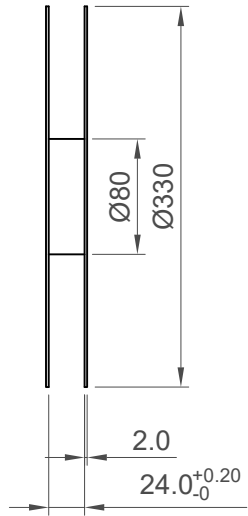
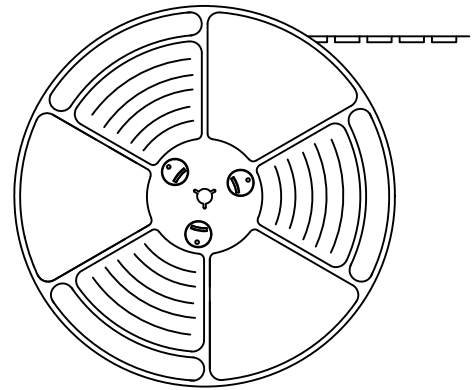
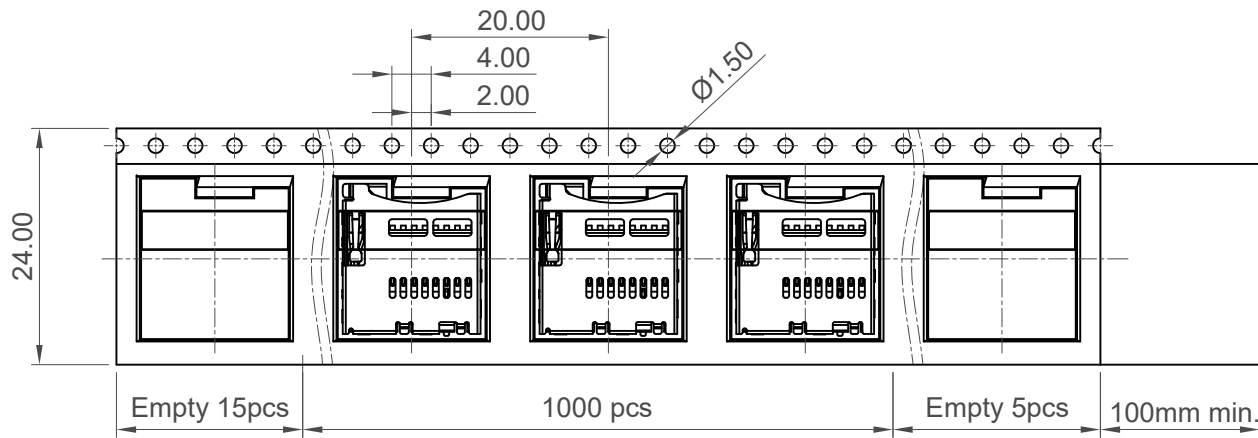
Durability: 10000 Cycles
 Operating Temperature: -40°C to +85°C

Ordering Grid

MEM2052-00-195-00-A [Request Samples and Quotation](#)
 Switch: 00 = Normally Open
 Locating Post: 00 = Without
 Packing Options: A = Tape & Reel (1000 per Reel)

Part Number		Product Description	
MEM2052		Micro SD Memory Card Connector	
Drawing Date		Push-Push, SMT, Card Entry Normal, 1.95mm Profile	
23rd November 2022			
By	CC	Tolerances (Except as Noted)	
Detail	Drawing Release	Length	Angle
Revision	A3	X.X ± 0.35	$\pm 2^\circ$
Date	08/03/24	X.XX ± 0.25	
		X.XXX ± 0.15	
		Units: Metric (mm)	
		3rd Angle Projection	
		RoHS COMPLIANT 2011/65/EU	
		This drawing is confidential and copyright of Global Connector Technology, Ltd (GCT). This drawing must not be copied or disclosed without written consent. E & OE	
		Not to Scale	Drawn By CC
		Sheet No. 1/2	

GCT
 www.gct.co



Pcs/Reel	Reels/Carton	Pcs/Carton
1000	6	6000

Part Number MEM2052		Product Description Micro SD Memory Card Connector Push-Push, SMT, Card Entry Normal, 1.95mm Profile	
Drawing Date 23rd November 2022			
By CC	Detail Drawing Release	Tolerances (Except as Noted) Length X.X ±0.35 X.XX ±0.25 X.XXX ±0.15	Units: Metric (mm)
Revision A3	Date 08/03/24	Angle ±2°	3rd Angle Projection
			This drawing is confidential and copyright of Global Connector Technology, Ltd (GCT). This drawing must not be copied or disclosed without written consent. E & OE
		Not to Scale	Drawn By CC Sheet No. 2/2



Mouser Electronics

Authorized Distributor

Click to View Pricing, Inventory, Delivery & Lifecycle Information:

[GCT:](#)

[MEM2052-00-195-00-A](#)