

60 V 100 mA Low Power Voltage Regulator for Automotive Applications

No. EC-397-190606

OVERVIEW

The R1561x is a CMOS-based low power voltage regulator for automotive applications featuring 60 V input voltage and 100 mA output current. The device includes a short current limit circuit, an overcurrent protection circuit and a thermal shutdown. These features make the R1561x an ideal constant voltage power source for on-vehicle accessories and control units.

KEY BENEFITS

- Low power consumption and excellent transient response help to provide stable power supply.
- The input voltage range is as wide as 5.5 V to 60 V, and the output voltage accuracy is as high as $\pm 0.8\%$.
- High heat dissipation and space-saving HSOP-6J and TO-252-5-P2 packages.

KEY SPECIFICATIONS

- Input Voltage Range (Max. Rating): 5.5 V to 60 V (80 V)
- Operating Temperature Range: -40°C to 125°C
- Supply Current: Typ. 20 μA
- Dropout Voltage: Typ. 1.3 V
($I_{\text{OUT}} = 100 \text{ mA}$, $V_{\text{OUT}} = 5.0 \text{ V}$)
- Output Voltage Accuracy: $\pm 0.8\%$ ($T_a = 25^{\circ}\text{C}$)
- Temp. Coefficient of Output Voltage: Typ. $\pm 100 \text{ ppm}/^{\circ}\text{C}$
- Line Regulation: Typ. 0.01%/V ($6 \text{ V} \leq V_{\text{IN}} \leq 60 \text{ V}$)
- Short-circuit Current Limiting: limits to Typ. 50 mA
- Overcurrent Protection: triggers at Typ. 150 mA
- Thermal Shutdown: triggers at Typ. 165°C

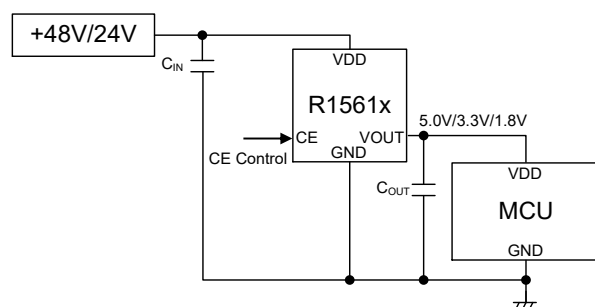
SELECTION GUIDE

Product Name	Package
R1561Sxx1B-E2-#E	HSOP-6J
R1561Jxx1B-T1-#E	TO-252-5-P2

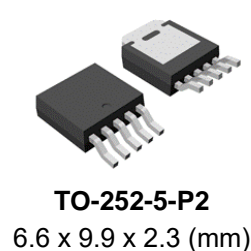
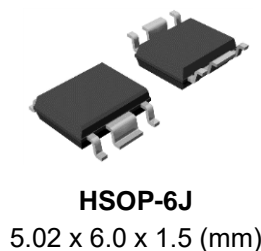
xx: Set Output Voltage (V_{SET})

1.8 V (18) / 2.5 V (25) / 2.8 V (28) / 3.0 V (30) / 3.3 V (33) / 3.4 V (34) / 5.0 V (50) / 7.0 V (70) / 8.0 V (80) / 9.0 V (90) / 10.0 V (A0) / 12.0 V (C0) / 14.0 V (E0)

TYPICAL APPLICATIONS



PACKAGES



APPLICATIONS

- EV Inverters and Charge Control Units
- 48-V Battery Systems (Mild Hybrid) and BMS

R1561x

No. EC-397-190606

SELECTION GUIDE

The output voltage, the package type and the quality class are user-selectable options.

Selection Guide

Product Name	Package	Quantity per Reel	Pb Free	Halogen Free
R1561Sxx1B-E2-#E	HSOP-6J	1,000 pcs	Yes	Yes
R1561Jxx1B-T1-#E	TO-252-5-P2	3,000 pcs	Yes	Yes

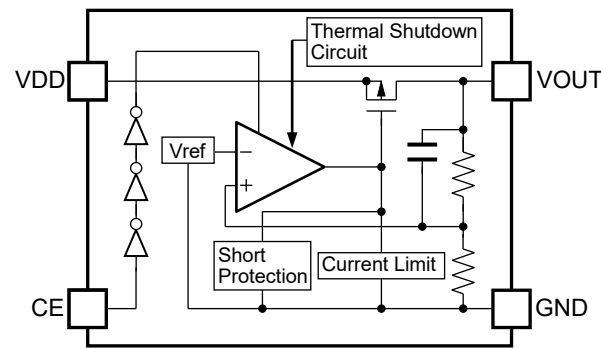
xx: Set Output Voltage (V_{SET})

1.8 V (18) / 2.5 V (25) / 2.8 V (28) / 3.0 V (30) / 3.3 V (33) / 3.4 V (34) / 5.0 V (50) /
7.0 V (70) / 8.0 V (80) / 9.0 V (90) / 10.0 V (A0) / 12.0 V (C0) / 14.0 V (E0)

#: Quality Class

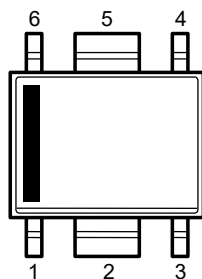
#	Operating Temp. Range	Test Temp.
A	-40°C to 125°C	25°C, High
K	-40°C to 125°C	Low, 25°C, High

BLOCK DIAGRAM

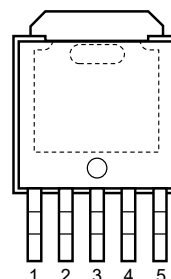


R1561x Block Diagram

PIN DESCRIPTIONS



HSOP-6J Pin Configuration



TO-252-5-P2 Pin Configuration

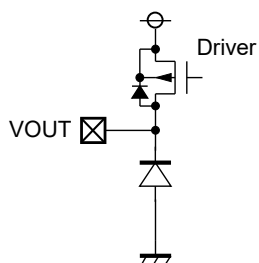
HSOP-6J Pin Description

Pin No.	Pin Name	Description
1	VOUT	Output Pin
2	GND ⁽¹⁾	Ground Pin
3	CE	Chip Enable Pin, Active-high
4	GND ⁽¹⁾	Ground Pin
5	GND ⁽¹⁾	Ground Pin
6	VDD	Input Pin

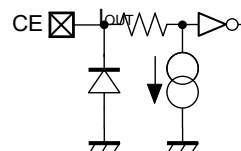
TO-252-5-P2 Pin Description

Pin No.	Pin Name	Description
1	VDD	Input Pin
2	NC	No Connection
3	GND	Ground Pin
4	VOUT	Output Pin
5	CE	Chip Enable Pin, Active-high

Pin Equivalent Circuit Diagrams



VOUT Pin Equivalent Circuit Diagram



CE Pin Equivalent Circuit Diagram

⁽¹⁾ The GND pins are connected to each other on the board.

R1561x

No. EC-397-190606

ABSOLUTE MAXIMUM RATINGS

Absolute Maximum Ratings

Symbol	Parameter			Rating	Unit
V _{IN}	Input Voltage			-0.3 to 80	V
V _{IN}	Peak Inrush Voltage ⁽¹⁾			90	V
V _{CE}	CE Pin Input Voltage			-0.3 to 80	V
V _{OUT}	Output Voltage			-0.3 to V _{IN} + 0.3 ≤ 80	V
I _{OUT}	Output Current			150	mA
P _D	Power Dissipation ⁽²⁾	HSOP-6J	JEDEC STD.51-7	3400	mW
		TO-252-5-P2	JEDEC STD.51-7	4800	
T _j	Junction Temperature			-40 to 150	°C
T _{stg}	Storage Temperature Range			-55 to 150	°C

ABSOLUTE MAXIMUM RATINGS

Electronic and mechanical stress momentarily exceeded absolute maximum ratings may cause permanent damage and may degrade the life time and safety for both device and system using the device in the field. The functional operation at or over these absolute maximum ratings is not assured.

RECOMMENDED OPERATING CONDITIONS

Recommended Operating Conditions

Symbol	Parameter	Rating	Unit
V _{IN}	Input Voltage	5.5 to 60	V
T _a	Operating Temperature Range	-40 to 125	°C

RECOMMENDED OPERATING CONDITONS

All of electronic equipment should be designed that the mounted semiconductor devices operate within the recommended operating conditions. The semiconductor devices cannot operate normally over the recommended operating conditions, even if they are used over such conditions by momentary electronic noise or surge. And the semiconductor devices may receive serious damage when they continue to operate over the recommended operating conditions.

⁽¹⁾ Duration: 200 ms or less

⁽²⁾ Refer to *POWER DISSIPATION* for detailed information.

ELECTRICAL CHARACTERISTICS

$C_{IN} = 0.1 \mu F$ / $C_{OUT} = 10 \mu F$, unless otherwise noted.

The specifications surrounded by are guaranteed by design engineering at $-40^{\circ}\text{C} \leq T_a \leq 125^{\circ}\text{C}$.

R1561x (-AE) Electrical Characteristics

($T_a = 25^{\circ}\text{C}$)

Symbol	Parameter	Test Conditions/Comments		Min.	Typ.	Max.	Unit
I _{SS}	Supply Current	V _{IN} = 14 V V _{CE} = 14 V I _{OUT} = 0 mA	V _{SET} ≤ 5.0 V		20.0	30.0	μA
		V _{IN} = 18 V V _{CE} = 18 V I _{OUT} = 0 mA	V _{SET} > 5.0 V		23.0	38.0	
I _{standby}	Standby Current	V _{IN} = 60 V, V _{CE} = 0 V			0.1	2.0	μA
V _{OUT}	Output Voltage	V _{SET} ≤ 5.0 V V _{IN} = 14 V I _{OUT} = 1 mA	T _a = 25°C	×0.992		×1.008	V
			−40°C ≤ T _a ≤ 125°C	×0.985		×1.015	
		V _{SET} > 5.0 V V _{IN} = 18 V I _{OUT} = 1 mA	T _a = 25°C	×0.988		×1.012	
			−40°C ≤ T _a ≤ 125°C	×0.980		×1.020	
ΔV _{OUT} / ΔI _{OUT}	Load Regulation	V _{IN} = 8 V (V _{SET} ≤ 5.0 V) V _{IN} = V _{SET} + 3 V (V _{SET} > 5.0 V) 1 mA ≤ I _{OUT} ≤ 100 mA		Refer to Voltage-specific Electrical Characteristics			
ΔV _{OUT} / ΔV _{IN}	Line Regulation	6 V ≤ V _{IN} ≤ 60 V I _{OUT} = 1 mA	V _{SET} ≤ 5.0 V	−0.02	0.01	0.02	% / V
		V _{SET} +1 V ≤ V _{IN} ≤ 60 V I _{OUT} = 1 mA	V _{SET} > 5.0 V	−0.02	0.01	0.02	
V _{DIF}	Dropout Voltage	I _{OUT} = 100 mA		Refer to Voltage-specific Electrical Characteristics			
I _{LIM}	Output Current Limit	V _{IN} = 8.0 V (V _{SET} ≤ 5.0 V) V _{IN} = V _{SET} + 3 V (V _{SET} > 5.0 V)		100	150	250	mA
I _{SC}	Short-circuit Current	V _{IN} = 8.0 V (V _{SET} ≤ 5.0 V) V _{IN} = V _{SET} + 3 V (V _{SET} > 5.0 V) V _{OUT} = 0 V		20	50	75	mA
V _{CEH}	CE Input Voltage “H”	V _{IN} = 60 V		3.0		60	V
V _{CEL}	CE Input Voltage “L”	V _{IN} = 60 V		0		0.3	V
I _{PD}	CE Pull-down Current	V _{IN} = 60 V, V _{CE} = 3 V			0.4	0.8	μA
T _{TSD}	Thermal Shutdown Temperature	Junction Temperature		150	165		°C
T _{TSR}	Thermal Shutdown Release Temperature ⁽¹⁾	Junction Temperature		125	135		°C

All parameters are tested under the pulse load condition ($T_j \approx T_a = 25^{\circ}\text{C}$).

⁽¹⁾ If the VDD and CE pins are turned on at the same time when $T_a > 125^{\circ}\text{C}$, the thermal shutdown can be activated.

R1561x

No. EC-397-190606

R1561x (-AE) Product-specific Electrical Characteristics

(Ta = 25°C)

Product Name	V _{OUT} (V) (Ta = 25°C)			V _{OUT} (V) (-40°C ≤ Ta ≤ 125°C)			ΔV _{OUT} /ΔI _{OUT} (mV)			V _{DIF} (V)	
	Min.	Typ.	Max.	Min.	Typ.	Max.	Min.	Typ.	Max.	Typ.	Max.
R1561x181B	1.7856	1.80	1.8144	<u>1.7730</u>	1.80	<u>1.8270</u>	<u>-30</u>	3	<u>30</u>	3.7	<u>4.0</u>
R1561x251B	2.4800	2.50	2.5200	<u>2.4625</u>	2.50	<u>2.5375</u>				3.0	<u>3.6</u>
R1561x281B	2.7776	2.80	2.8224	<u>2.7580</u>	2.80	<u>2.8420</u>				2.7	<u>3.6</u>
R1561x301B	2.9760	3.00	3.0240	<u>2.9550</u>	3.00	<u>3.0450</u>				2.5	<u>3.6</u>
R1561x331B	3.2736	3.30	3.3264	<u>3.2505</u>	3.30	<u>3.3495</u>				2.2	<u>3.0</u>
R1561x341B	3.3728	3.40	3.4272	<u>3.3490</u>	3.40	<u>3.4510</u>				2.1	<u>3.0</u>
R1561x501B	4.9600	5.00	5.0400	<u>4.9250</u>	5.00	<u>5.0750</u>	<u>-40</u>	4	<u>40</u>	1.3	<u>2.5</u>
R1561x701B	6.9160	7.00	7.0840	<u>6.8600</u>	7.00	<u>7.1400</u>				1.3	<u>2.5</u>
R1561x801B	7.9040	8.00	8.0960	<u>7.8400</u>	8.00	<u>8.1600</u>				1.3	<u>2.5</u>
R1561x901B	8.8920	9.00	9.1080	<u>8.8200</u>	9.00	<u>9.1800</u>				1.3	<u>2.5</u>
R1561xA01B	9.8800	10.00	10.120	<u>9.8000</u>	10.0	<u>10.200</u>				1.3	<u>2.5</u>
R1561xC01B	11.856	12.00	12.144	<u>11.760</u>	12.0	<u>12.240</u>				1.3	<u>2.5</u>
R1561xE01B	13.832	14.00	14.168	<u>13.720</u>	14.0	<u>14.280</u>				1.3	<u>2.5</u>

$C_{IN} = 0.1 \mu F$ / $C_{OUT} = 10 \mu F$, unless otherwise noted.

R1561x (-KE) Electrical Characteristics

($-40^{\circ}\text{C} \leq T_a \leq 125^{\circ}\text{C}$)

Symbol	Parameter	Test Conditions/Comments		Min.	Typ.	Max.	Unit
I _{SS}	Supply Current	V _{IN} = 14 V V _{CE} = 14 V I _{OUT} = 0 mA	V _{SET} ≤ 5.0 V		20.0	30.0	μA
		V _{IN} = 18 V V _{CE} = 18 V I _{OUT} = 0 mA	V _{SET} > 5.0 V		23.0	38.0	
I _{standby}	Standby Current	V _{IN} = 60 V, V _{CE} = 0 V			0.1	2.0	μA
V _{OUT}	Output Voltage	V _{SET} ≤ 5.0 V V _{IN} = 14 V I _{OUT} = 1 mA	T _a = 25°C	×0.992		×1.008	V
			−40°C ≤ T _a ≤ 125°C	×0.985		×1.015	
		V _{SET} > 5.0 V V _{IN} = 18 V I _{OUT} = 1 mA	T _a = 25°C	×0.988		×1.012	
			−40°C ≤ T _a ≤ 125°C	×0.980		×1.020	
ΔV _{OUT} / ΔI _{OUT}	Load Regulation	V _{IN} = 8 V (V _{SET} ≤ 5.0 V) V _{IN} = V _{SET} + 3 V (V _{SET} > 5.0 V) 1 mA ≤ I _{OUT} ≤ 100 mA		Refer to Voltage-specific Electrical Characteristics			
ΔV _{OUT} / ΔV _{IN}	Line Regulation	6 V ≤ V _{IN} ≤ 60 V I _{OUT} = 1 mA	V _{SET} ≤ 5.0 V	−0.02	0.01	0.02	% / V
		V _{SET} +1 V ≤ V _{IN} ≤ 60 V I _{OUT} = 1 mA	V _{SET} > 5.0 V	−0.02	0.01	0.02	
V _{DIF}	Dropout Voltage	I _{OUT} = 100 mA		Refer to Voltage-specific Electrical Characteristics			
I _{LIM}	Output Current Limit	V _{IN} = 8.0 V (V _{SET} ≤ 5.0 V) V _{IN} = V _{SET} + 3 V (V _{SET} > 5.0 V)		100	150	250	mA
I _{SC}	Short-circuit Current	V _{IN} = 8.0 V (V _{SET} ≤ 5.0 V) V _{IN} = V _{SET} + 3 V (V _{SET} > 5.0 V) V _{OUT} = 0 V		20	50	75	mA
V _{CEH}	CE Input Voltage “H”	V _{IN} = 60 V		3.0		60	V
V _{CEL}	CE Input Voltage “L”	V _{IN} = 60 V		0		0.3	V
I _{PD}	CE Pull-down Current	V _{IN} = 60 V, V _{CE} = 3 V			0.4	0.8	μA
T _{TSD}	Thermal Shutdown Temperature	Junction Temperature		150	165		°C
T _{TSR}	Thermal Shutdown Release Temperature ⁽¹⁾	Junction Temperature		125	135		°C

All parameters are tested under the pulse load condition (T_j ≈ T_a = 25°C).

⁽¹⁾ If the VDD and CE pins are turned on at the same time when T_a > 125°C, the thermal shutdown can be activated.

R1561x

No. EC-397-190606

R1561x (-KE) Product-specific Electrical Characteristics

(-40°C ≤ Ta ≤ 125°C)

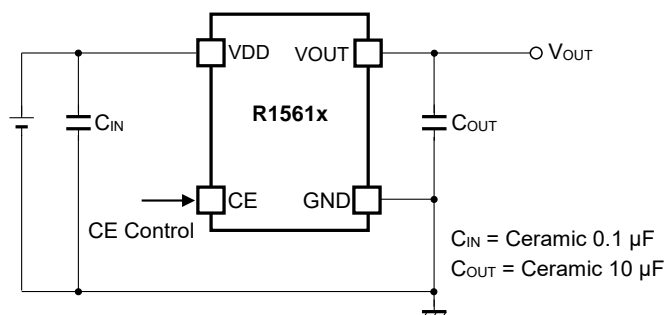
Product Name	V _{OUT} (V) (Ta = 25°C)			V _{OUT} (V) (-40°C ≤ Ta ≤ 125°C)			ΔV _{OUT} /ΔI _{OUT} (mV)			V _{DIF} (V)	
	Min.	Typ.	Max.	Min.	Typ.	Max.	Min.	Typ.	Max.	Typ.	Max.
R1561x181B	1.7856	1.80	1.8144	1.7730	1.80	1.8270	-30	3	30	3.7	4.0
R1561x251B	2.4800	2.50	2.5200	2.4625	2.50	2.5375				3.0	3.6
R1561x281B	2.7776	2.80	2.8224	2.7580	2.80	2.8420				2.7	3.6
R1561x301B	2.9760	3.00	3.0240	2.9550	3.00	3.0450				2.5	3.6
R1561x331B	3.2736	3.30	3.3264	3.2505	3.30	3.3495				2.2	3.0
R1561x341B	3.3728	3.40	3.4272	3.3490	3.40	3.4510				2.1	3.0
R1561x501B	4.9600	5.00	5.0400	4.9250	5.00	5.0750				1.3	2.5
R1561x701B	6.9160	7.00	7.0840	6.8600	7.00	7.1400	-40	4	40	1.3	2.5
R1561x801B	7.9040	8.00	8.0960	7.8400	8.00	8.1600				1.3	2.5
R1561x901B	8.8920	9.00	9.1080	8.8200	9.00	9.1800				1.3	2.5
R1561xA01B	9.8800	10.00	10.120	9.8000	10.0	10.200				1.3	2.5
R1561xC01B	11.856	12.00	12.144	11.760	12.0	12.240				1.3	2.5
R1561xE01B	13.832	14.00	14.168	13.720	14.0	14.280				1.3	2.5

THEORY OF OPERATION

Thermal Shutdown

If the junction temperature increases above 165°C (Typ.), the operation of the regulator would stop. And if the junction temperature decreases below 135°C (Typ.), the operation of the regulator would restart. Unless the causes of temperature rising are removed, the regulator repeats turning on and off and the output waveform becomes a pulse shape.

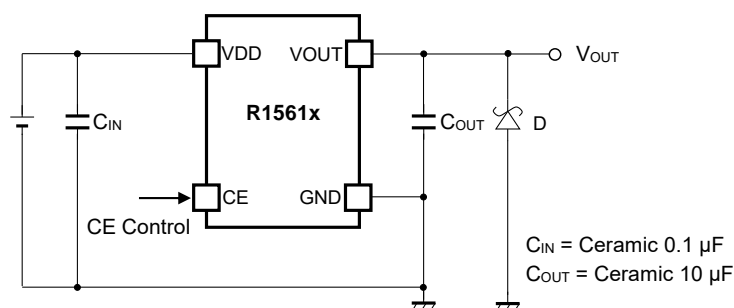
APPLICATION INFORMATION



R1561x Typical Applications

Typical Application for IC Chip Breakdown Prevention

When a sudden surge of electrical current travels along the VOUT pin and GND due to a short-circuit, electrical resonance of a circuit involving an output capacitor (C_{OUT}) and a short circuit inductor generates a negative voltage and may damage the device or the load devices. Connecting a schottky diode (D) between the VOUT pin and GND has the effect of preventing damage to them.



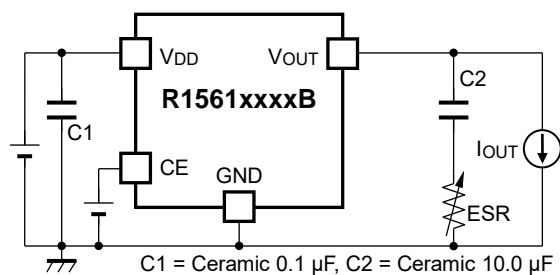
R1561x Typical Application for IC Chip Breakdown Prevention

R1561x

No. EC-397-190606

Equivalent Series Resistance vs. Output Current

It is recommended that a ceramic type capacitor be used for this device. However, other types of capacitors having lower ESR can also be used. The relation between the output current (I_{OUT}) and the ESR of output capacitor is shown below.



Measurement Conditions

Frequency Band: 10 Hz to 2 MHz

Measurement Temperature: -40°C to 125°C

Capacitor: C1 = Ceramic 0.1 μ F, C2 = Ceramic 10.0 μ F

ESR: 0 to 100 Ω

V_{OUT} : 1.8 V, 5.0 V

It is confirmed that the output noise level is less than the specified value (40 μVrms) under the measurement conditions above.

TECHNICAL NOTES

The performance of a power source circuit using this device is highly dependent on a peripheral circuit. A peripheral component or the device mounted on PCB should not exceed its rated voltage, rated current or rated power. When designing a peripheral circuit, please be fully aware of the following points.

Phase Compensation

A phase compensation is provided to secure stable operation even when the load current is varied. For this purpose, use a 10- μ F or more output capacitor (C_{OUT}) with good frequency characteristics and proper ESR (Equivalent Series Resistance). In case of using a tantalum type capacitor with a large ESR, the output might become unstable. Evaluate your circuit including consideration of frequency characteristics. Connect a 0.1- μ F or more input capacitor (C_{IN}) between the VDD and GND pins with shortest-distance wiring.

PCB Layout

As for the HSOP-6J package, ensure that the GND pins (Pin No. 2, 4 and 5) are connected to each other and the ground plane.

Operating the Device below the Minimum Operating Voltage

Operating the device below the recommended operating voltage range can make the output voltage unstable and make the output voltage higher than the set output voltage (V_{SET}) of the device.

In the case of turning on the VIN and CE pins at the same time, both pins must be turned on using a 100-V/ms or more slew rate in order to prevent the unstable operation upon start-up. In the case of turning on the VIN pin using a 100-V/ms or less slew rate, the CE pin must be turned on after the supply voltage becomes 5.5 V or more.

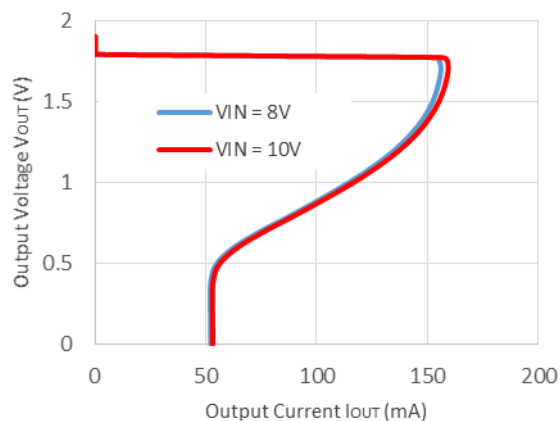
In the case of turning off the VIN and CE pins at the same time, both pins must be turned off using a steep slew rate, -100 V/ms or higher in order to prevent the unstable operation. In the case of turning off the VIN pin using a slow rate, lower than -100 V/ms, the CE pin must be turned off before the supply voltage decreases to 5.5 V.

TYPICAL CHARACTERISTICS

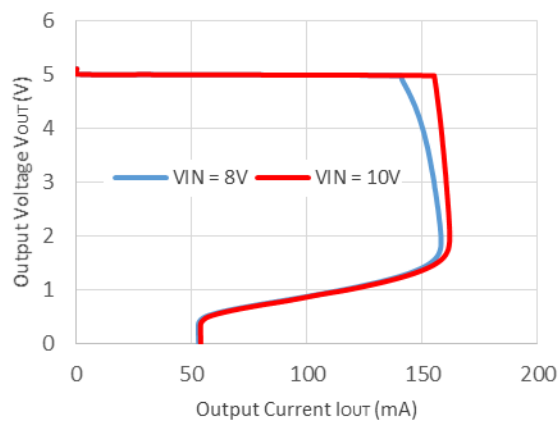
Note: Typical Characteristics are intended to be used as reference data; they are not guaranteed.

1) Output Voltage vs. Output Current ($T_a = 25^\circ\text{C}$)

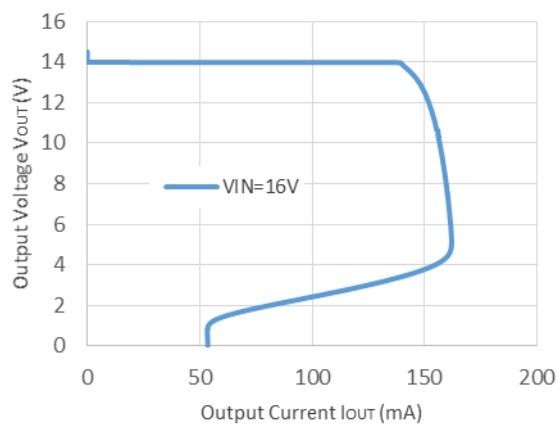
R1561x181B



R1561x501B

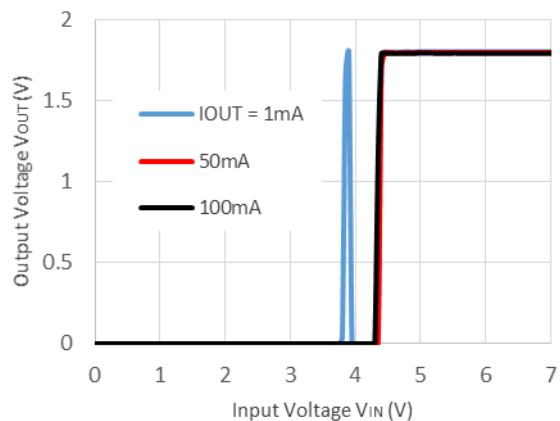


R1561xE01B

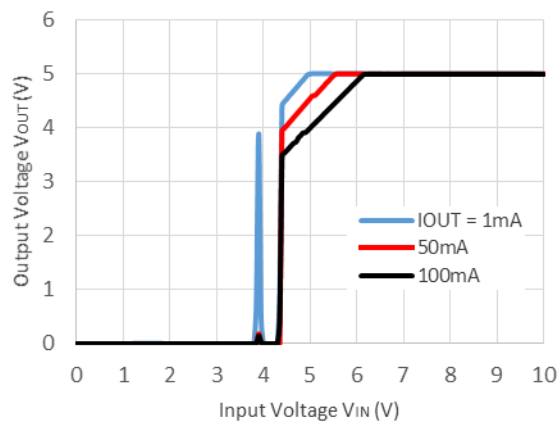


2) Output Voltage vs. Input Voltage ($T_a = 25^\circ\text{C}$)

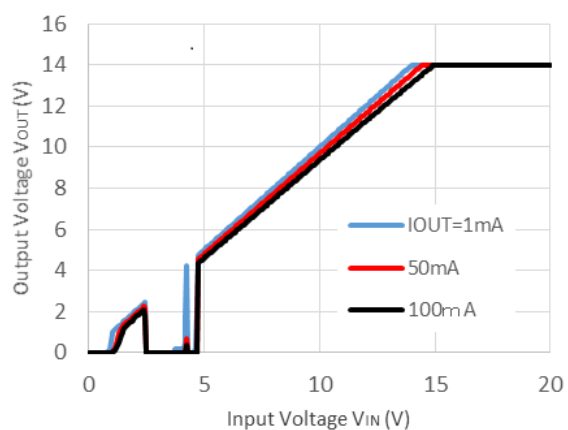
R1561x181B



R1561x501B

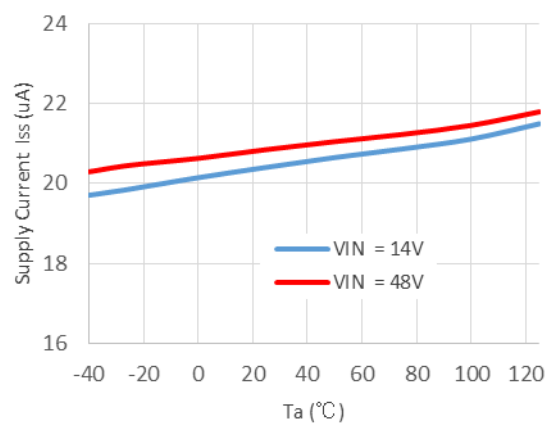


R1561xE01B

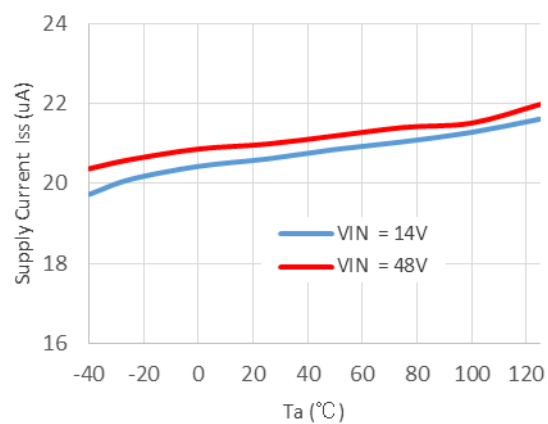


3) Supply Current vs. Temperature

R1561x181B

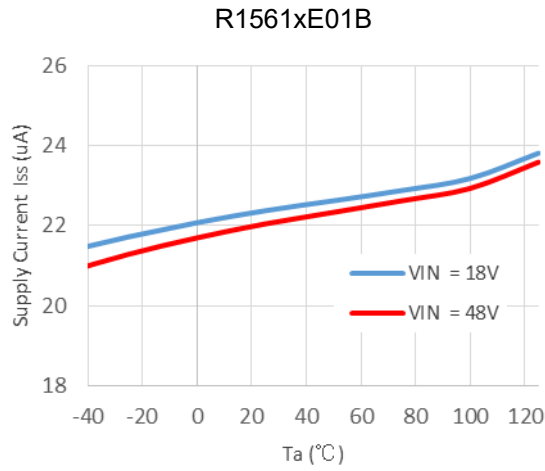


R1561x501B

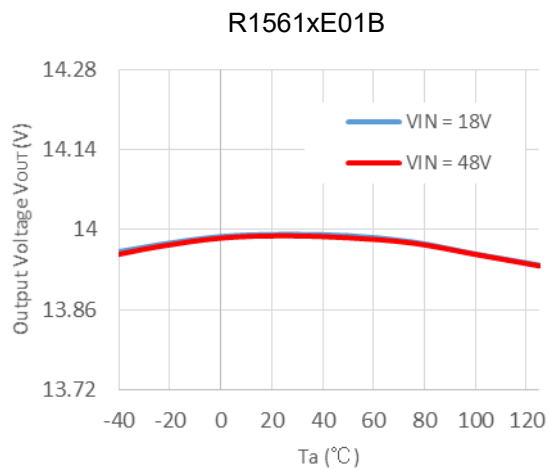
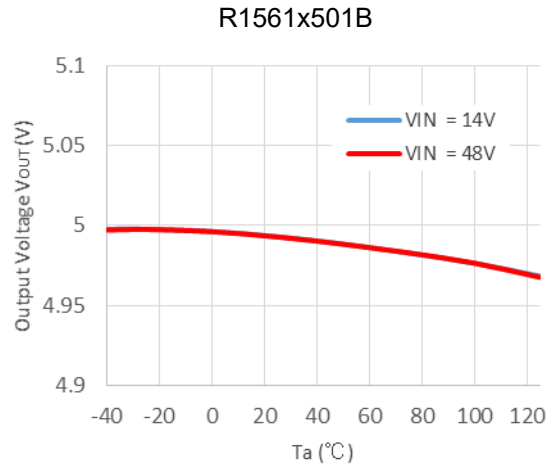
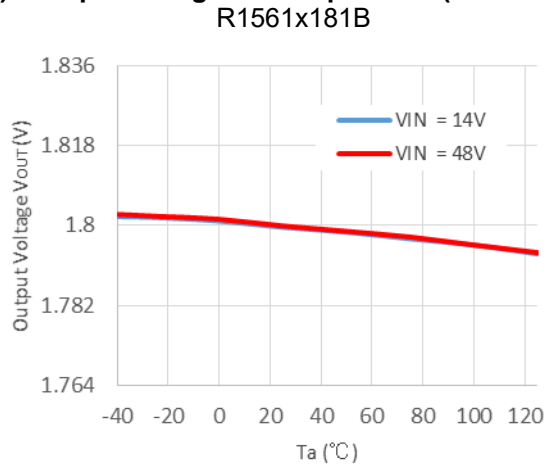


R1561x

No. EC-397-190606

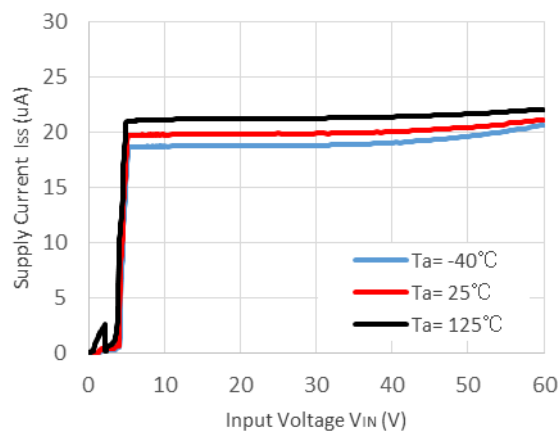


4) Output Voltage vs. Temperature ($I_{OUT} = 1\text{ mA}$)

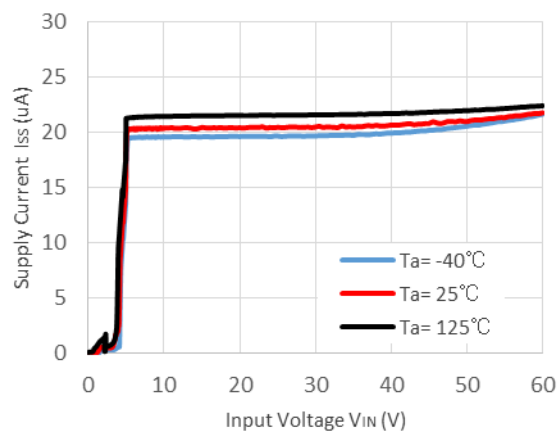


5) Supply Current vs. Input Voltage

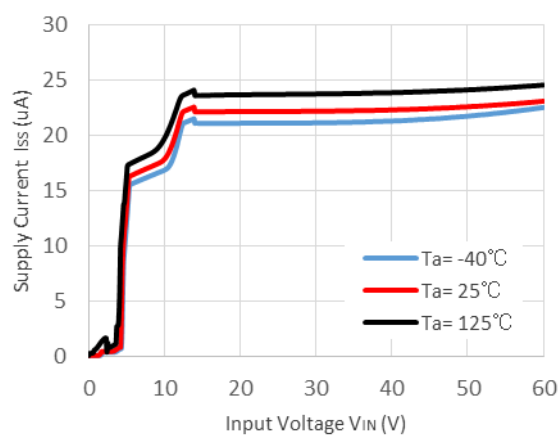
R1561x181B



R1561x501B

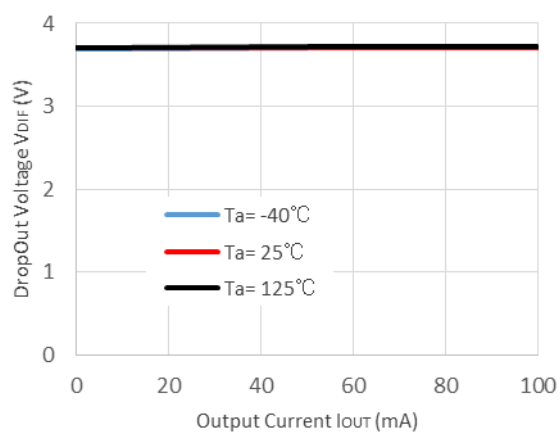


R1561xE01B

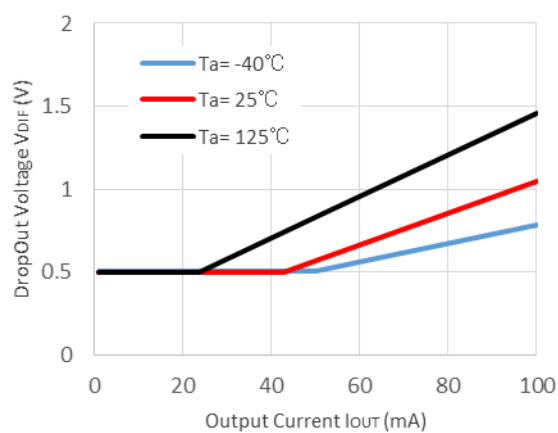


6) Dropout Voltage vs. Output Current

R1561x181B



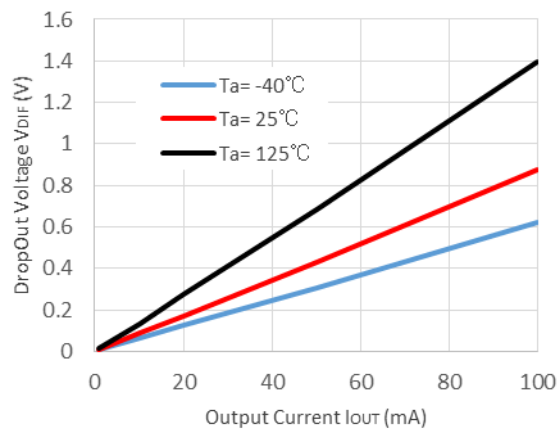
R1561x501B



R1561x

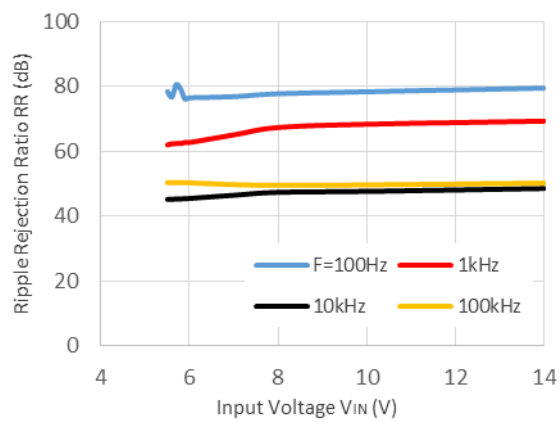
No. EC-397-190606

R1561xE01B

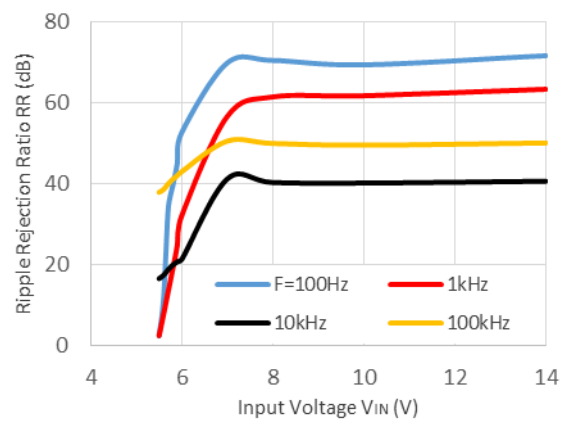


7) Ripple Rejection vs. Input Bias Voltage ($T_a = 25^\circ\text{C}$, $V_{RIPPLE} = \pm 0.2\text{ V}$, $C_{OUT} = 10\text{ }\mu\text{F}$)

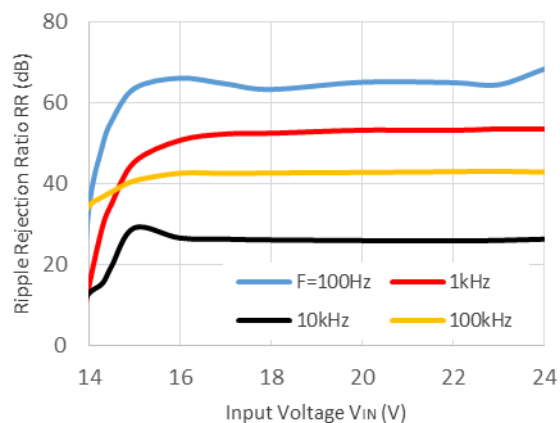
R1561x181B



R1561x501B

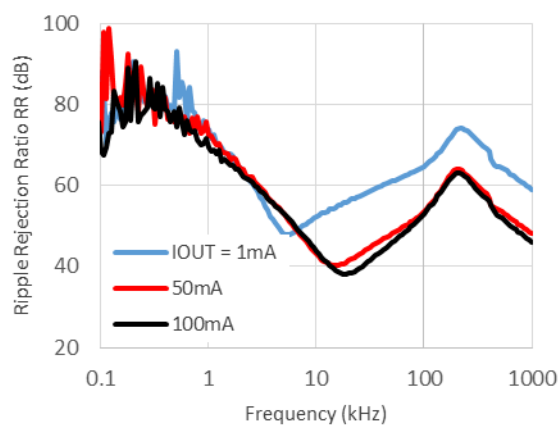


R1561xE01B

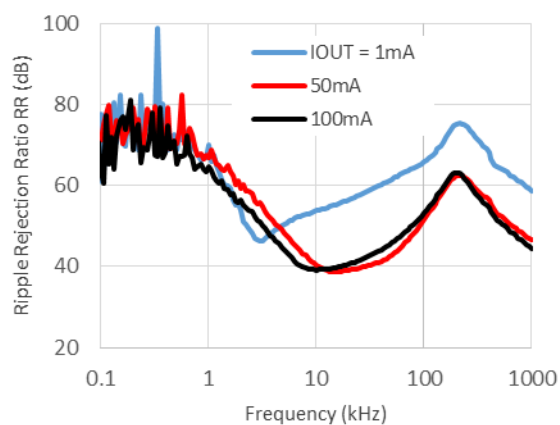


8) Ripple Rejection vs. Frequency ($T_a = 25^\circ\text{C}$, $C_{OUT} = 10\ \mu\text{F}$)

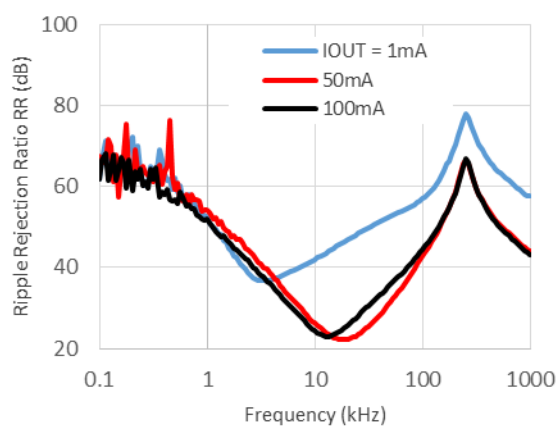
R1561x181B

 $V_{IN} = 14\ \text{V} \pm 0.2\ \text{V}$ ripple

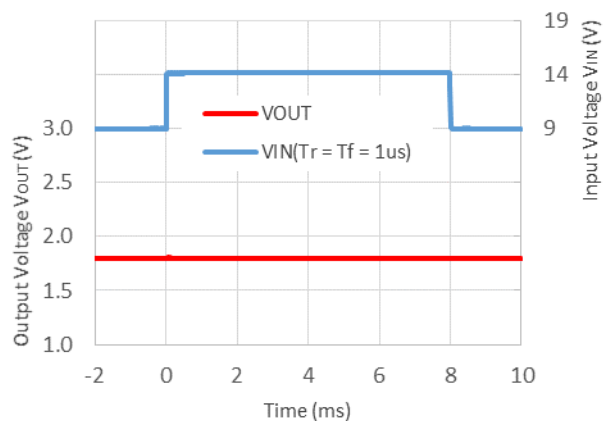
R1561x501B

 $V_{IN} = 14\ \text{V} \pm 0.2\ \text{V}$ ripple

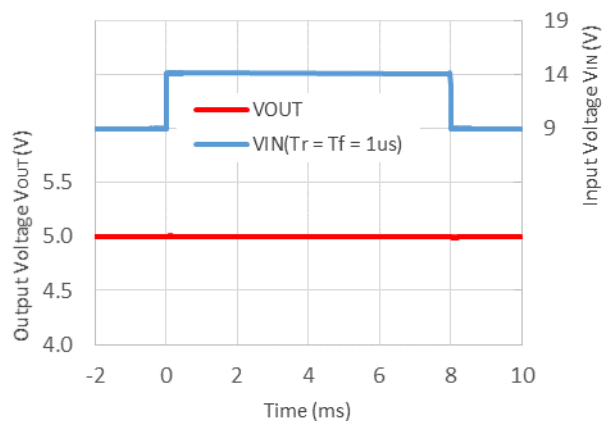
R1561xE01B

 $V_{IN} = 18\ \text{V} \pm 0.2\ \text{V}$ ripple**9) Input Transient Response ($T_a = 25^\circ\text{C}$, $I_{OUT} = 1\ \text{mA}$, $C_{OUT} = 10\ \mu\text{F}$)**

R1561x181B



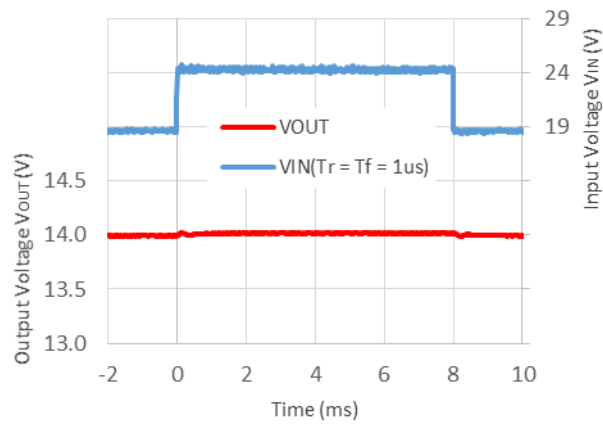
R1561x501B



R1561x

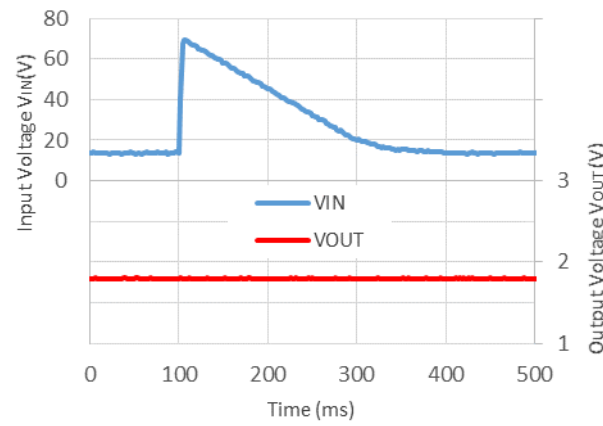
No. EC-397-190606

R1561xE01B

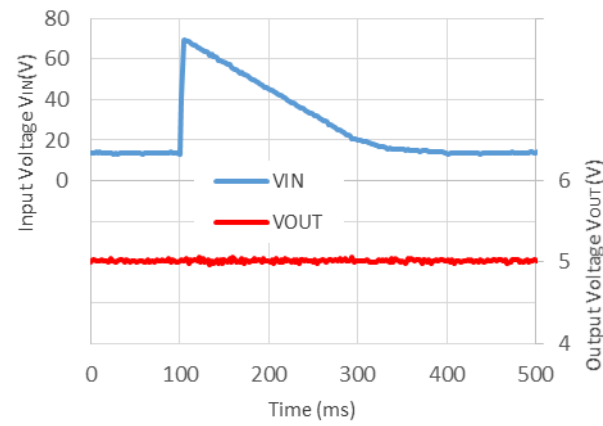


10) Load Dump ($T_a = 25^\circ\text{C}$, $I_{OUT} = 1\text{ mA}$, $C_{OUT} = 10\text{ }\mu\text{F}$)

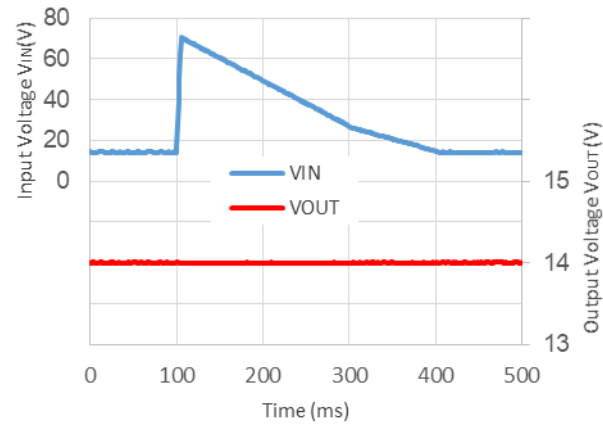
R1561x181B



R1561x501B

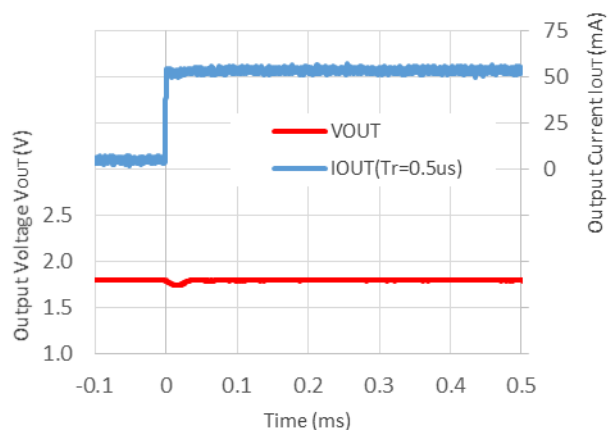


R1561xE01B

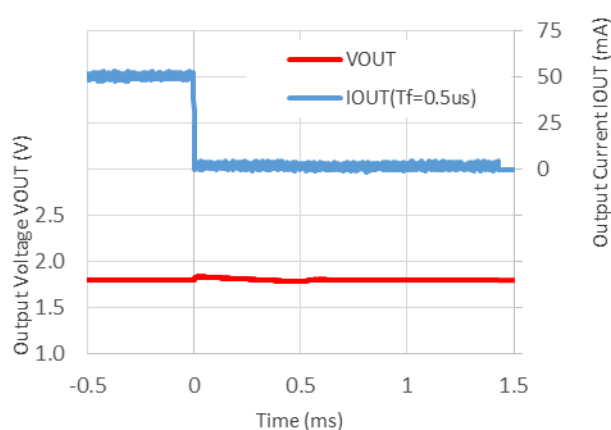


11) Load Transient Response ($T_a = 25^\circ\text{C}$, $I_{\text{OUT}} = 1\text{ mA} \leftrightarrow 50\text{ mA}$, $C_{\text{OUT}} = 10\text{ }\mu\text{F}$)

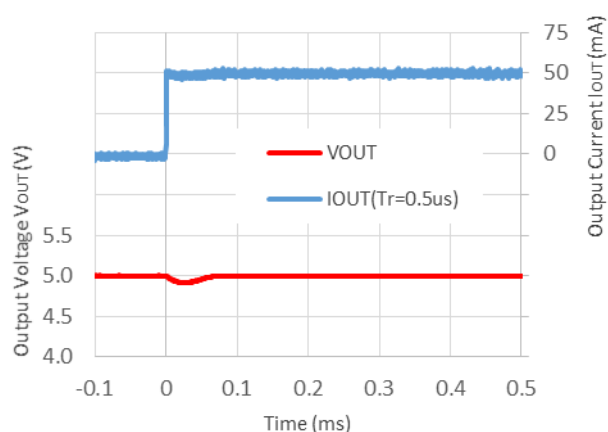
R1561x181B

 $V_{\text{IN}} = 14\text{ V}$, $I_{\text{OUT}} = 1\text{ mA} \rightarrow 50\text{ mA}$ 

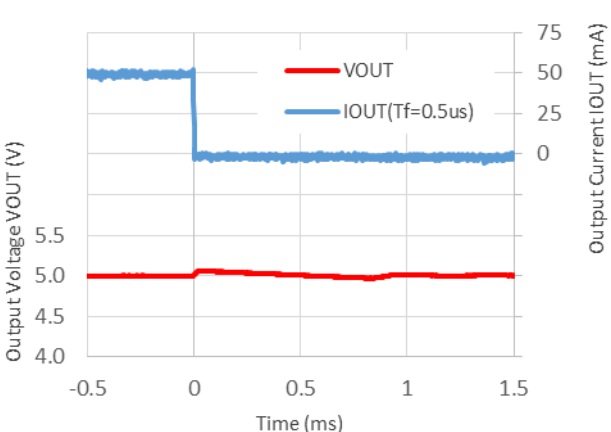
R1561x181B

 $V_{\text{IN}} = 14\text{ V}$, $I_{\text{OUT}} = 50\text{ mA} \rightarrow 1\text{ mA}$ 

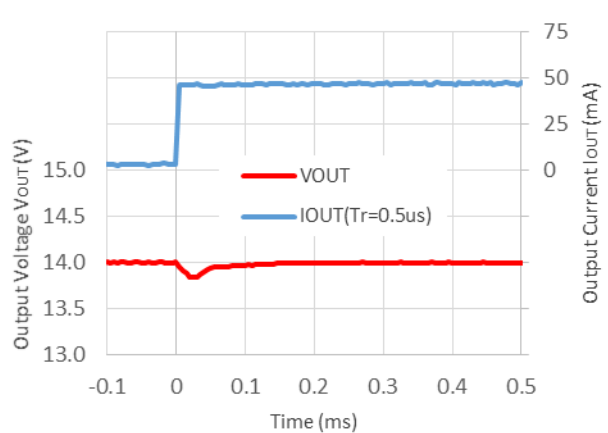
R1561x501B

 $V_{\text{IN}} = 14\text{ V}$, $I_{\text{OUT}} = 1\text{ mA} \rightarrow 50\text{ mA}$ 

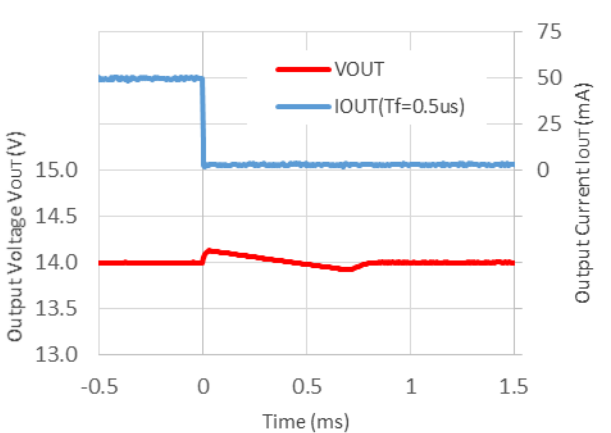
R1561x501B

 $V_{\text{IN}} = 14\text{ V}$, $I_{\text{OUT}} = 50\text{ mA} \rightarrow 1\text{ mA}$ 

R1561xE01B

 $V_{\text{IN}} = 18\text{ V}$, $I_{\text{OUT}} = 1\text{ mA} \rightarrow 50\text{ mA}$ 

R1561xE01B

 $V_{\text{IN}} = 18\text{ V}$, $I_{\text{OUT}} = 50\text{ mA} \rightarrow 1\text{ mA}$ 

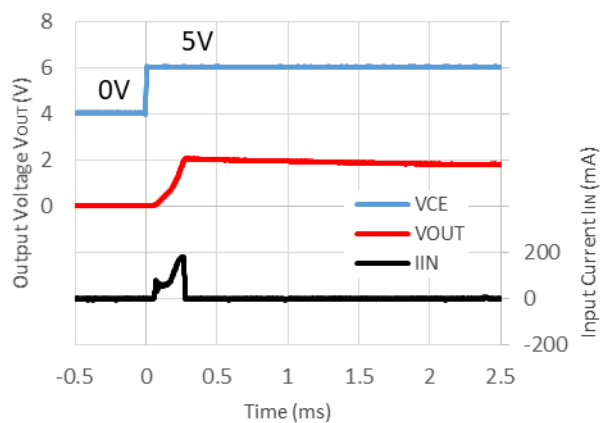
R1561x

No. EC-397-190606

12) CE Start-up ($T_a = 25^\circ\text{C}$)

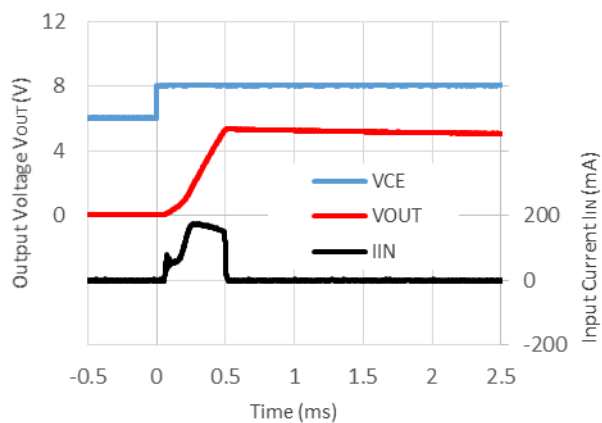
R1561x181B

$V_{IN} = 14\text{ V}$, $C_{OUT} = 10\text{ }\mu\text{F}$



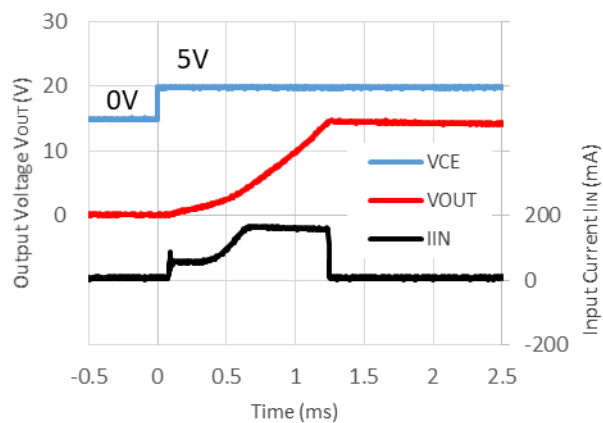
R1561x501B

$V_{IN} = 14\text{ V}$, $C_{OUT} = 10\text{ }\mu\text{F}$



R1561xE01B

$V_{IN} = 18\text{ V}$, $C_{OUT} = 10\text{ }\mu\text{F}$



The power dissipation of the package is dependent on PCB material, layout, and environmental conditions. The following measurement conditions are based on JEDEC STD. 51-7.

Measurement Conditions

Item	Measurement Conditions
Environment	Mounting on Board (Wind Velocity = 0 m/s)
Board Material	Glass Cloth Epoxy Plastic (Four-Layer Board)
Board Dimensions	76.2 mm × 114.3 mm × 0.8 mm
Copper Ratio	Outer Layer (First Layer): Less than 95% of 50 mm Square Inner Layers (Second and Third Layers): Approx. 100% of 50 mm Square Outer Layer (Fourth Layer): Approx. 100% of 50 mm Square
Through-holes	φ 0.3 mm × 28 pcs

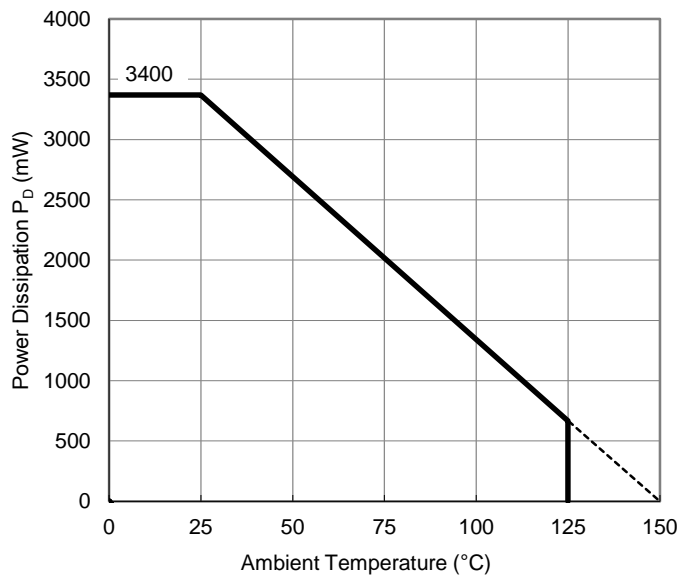
Measurement Result

(Ta = 25°C, Tjmax = 150°C)

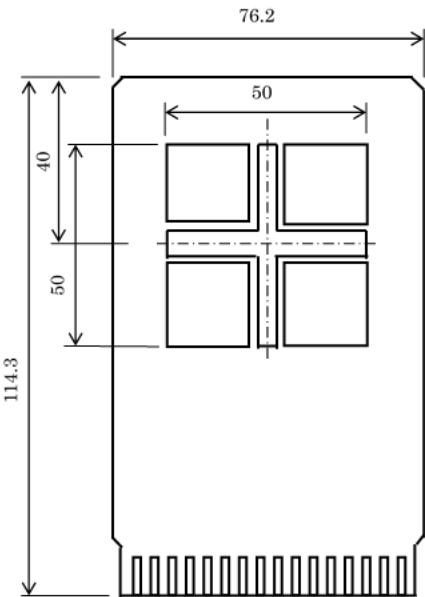
Item	Measurement Result
Power Dissipation	3400 mW
Thermal Resistance (θja)	θja = 37°C/W
Thermal Characterization Parameter (ψjt)	ψjt = 7°C/W

θja: Junction-to-Ambient Thermal Resistance

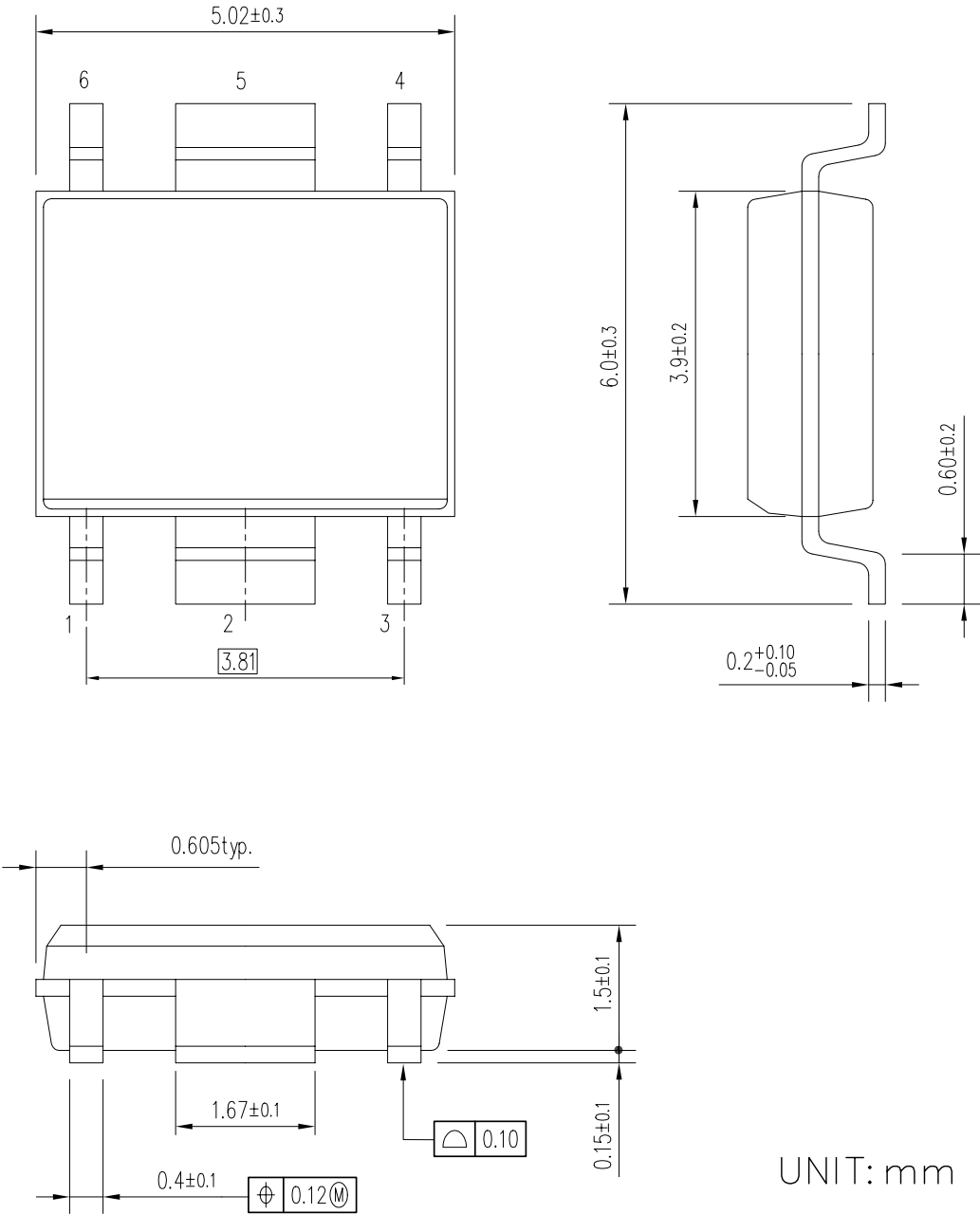
ψjt: Junction-to-Top Thermal Characterization Parameter



Power Dissipation vs. Ambient Temperature



Measurement Board Pattern



HSOP-6J Package Dimensions

The power dissipation of the package is dependent on PCB material, layout, and environmental conditions. The following measurement conditions are based on JEDEC STD. 51-7.

Measurement Conditions

Item	Measurement Conditions
Environment	Mounting on Board (Wind Velocity = 0 m/s)
Board Material	Glass Cloth Epoxy Plastic (Four-Layer Board)
Board Dimensions	76.2 mm × 114.3 mm × 0.8 mm
Copper Ratio	Outer Layer (First Layer): Less than 95% of 50 mm Square Inner Layers (2nd, 3rd, 4th Layers: Approx. 100% of 50 mm Square
Through-holes	φ 0.3 mm × 21 pcs

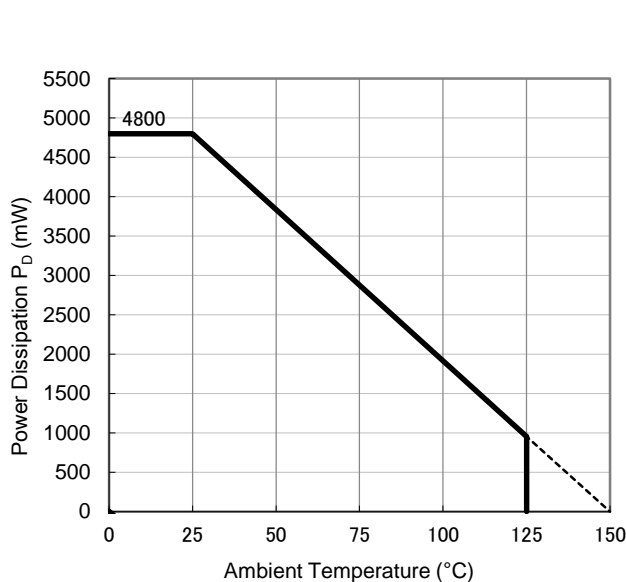
Measurement Result

(Ta = 25°C, Tjmax = 150°C)

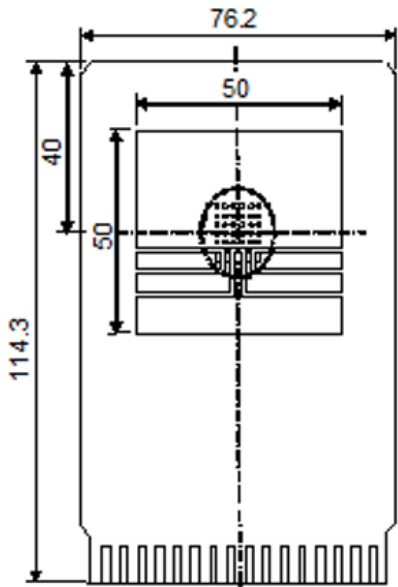
Item	Measurement Result
Power Dissipation	4800 mW
Thermal Resistance (θja)	θja = 26°C/W
Thermal Characterization Parameter (ψjt)	ψjt = 7°C/W

θja: Junction-to-Ambient Thermal Resistance

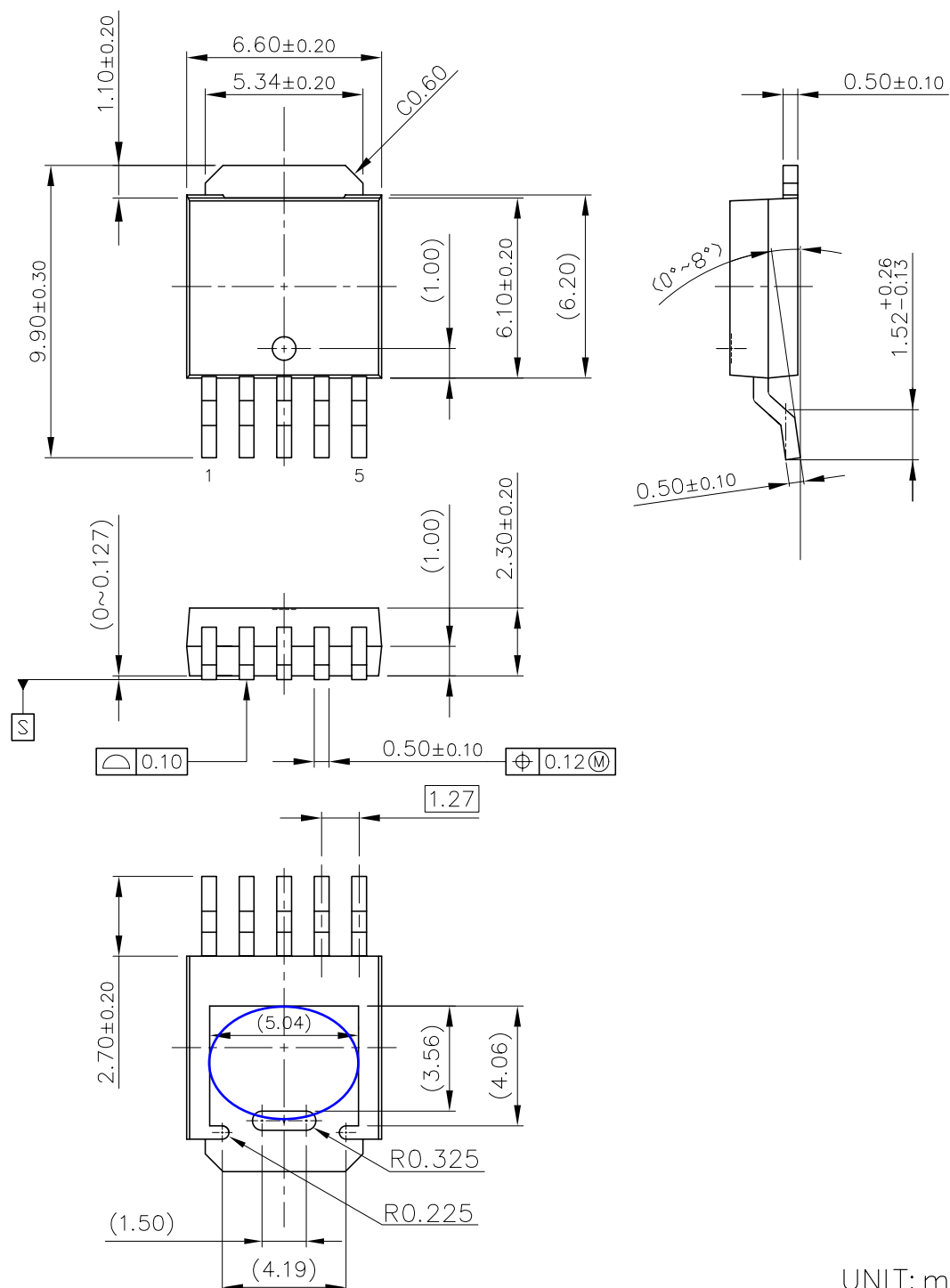
ψjt: Junction-to-Top Thermal Characterization Parameter



Power Dissipation vs. Ambient Temperature



Measurement Board Pattern



TO-252-5-P2 Package Dimensions

* The tab on the bottom of the package shown by blue circle is a substrate potential (GND). It is recommended that this tab be connected to the ground plane on the board but it is possible to leave the tab floating.



1. The products and the product specifications described in this document are subject to change or discontinuation of production without notice for reasons such as improvement. Therefore, before deciding to use the products, please refer to Ricoh sales representatives for the latest information thereon.
2. The materials in this document may not be copied or otherwise reproduced in whole or in part without prior written consent of Ricoh.
3. Please be sure to take any necessary formalities under relevant laws or regulations before exporting or otherwise taking out of your country the products or the technical information described herein.
4. The technical information described in this document shows typical characteristics of and example application circuits for the products. The release of such information is not to be construed as a warranty of or a grant of license under Ricoh's or any third party's intellectual property rights or any other rights.
5. The products in this document are designed for automotive applications. However, when using the products for automotive applications, please make sure to contact Ricoh sales representative in advance due to confirming the quality level.
6. We are making our continuous effort to improve the quality and reliability of our products, but semiconductor products are likely to fail with certain probability. In order to prevent any injury to persons or damages to property resulting from such failure, customers should be careful enough to incorporate safety measures in their design, such as redundancy feature, fire containment feature and fail-safe feature. We do not assume any liability or responsibility for any loss or damage arising from misuse or inappropriate use of the products.
7. Anti-radiation design is not implemented in the products described in this document.
8. The X-ray exposure can influence functions and characteristics of the products. Confirm the product functions and characteristics in the evaluation stage.
9. WLCSP products should be used in light shielded environments. The light exposure can influence functions and characteristics of the products under operation or storage.
10. There can be variation in the marking when different AOI (Automated Optical Inspection) equipment is used.
In the case of recognizing the marking characteristic with AOI, please contact Ricoh sales or our distributor before attempting to use AOI.
11. Please contact Ricoh sales representatives should you have any questions or comments concerning the products or the technical information.



Ricoh is committed to reducing the environmental loading materials in electrical devices with a view to contributing to the protection of human health and the environment.

Ricoh has been providing RoHS compliant products since April 1, 2006 and Halogen-free products since April 1, 2012.

RICOH RICOH ELECTRONIC DEVICES CO., LTD.

<https://www.e-devices.ricoh.co.jp/en/>

Sales & Support Offices

Ricoh Electronic Devices Co., Ltd.

Shin-Yokohama Office (International Sales)

2-3, Shin-Yokohama 3-chome, Kohoku-ku, Yokohama-shi, Kanagawa, 222-8530, Japan
Phone: +81-50-3814-7687 Fax: +81-45-474-0074

Ricoh Americas Holdings, Inc.

675 Campbell Technology Parkway, Suite 200 Campbell, CA 95008, U.S.A.
Phone: +1-408-610-3105

Ricoh Europe (Netherlands) B.V.

Semiconductor Support Centre

Prof. W.H. Keesomlaan 1, 1183 DJ Amstelveen, The Netherlands
Phone: +31-20-5474-309

Ricoh International B.V. - German Branch

Semiconductor Sales and Support Centre

Oberrather Strasse 6, 40472 Düsseldorf, Germany
Phone: +49-211-6546-0

Ricoh Electronic Devices Korea Co., Ltd.

3F, Haesung Bldg, 504, Teheran-ro, Gangnam-gu, Seoul, 135-725, Korea
Phone: +82-2-2135-5700 Fax: +82-2-2051-5713

Ricoh Electronic Devices Shanghai Co., Ltd.

Room 403, No.2 Building, No.690 Bibo Road, Pu Dong New District, Shanghai 201203, People's Republic of China
Phone: +86-21-5027-3200 Fax: +86-21-5027-3299

Ricoh Electronic Devices Shanghai Co., Ltd. Shenzhen Branch

1205, Block D(Jinlong Building), Kingkey 100, Hongbao Road, Luohu District, Shenzhen, China
Phone: +86-755-8348-7600 Ext 225

Ricoh Electronic Devices Co., Ltd.

Taipei office

Room 109, 10F-1, No.51, Hengyang Rd., Taipei City, Taiwan
Phone: +886-2-2313-1621/1622 Fax: +886-2-2313-1623

Mouser Electronics

Authorized Distributor

Click to View Pricing, Inventory, Delivery & Lifecycle Information:

[Ricoch Electronics:](#)

[R1561S501B-E2-KE](#) [R1561J331B-T1-YE](#) [R1561S501B-E2-FE](#) [R1561J331B-T1-FE](#) [R1561J331B-T1-KE](#)