

Shielded Stacked 2x1 RJ45

8P/8C Shielded Dual Port Stacked 2x1 RJ45 Ethernet Connectors



Product Features:

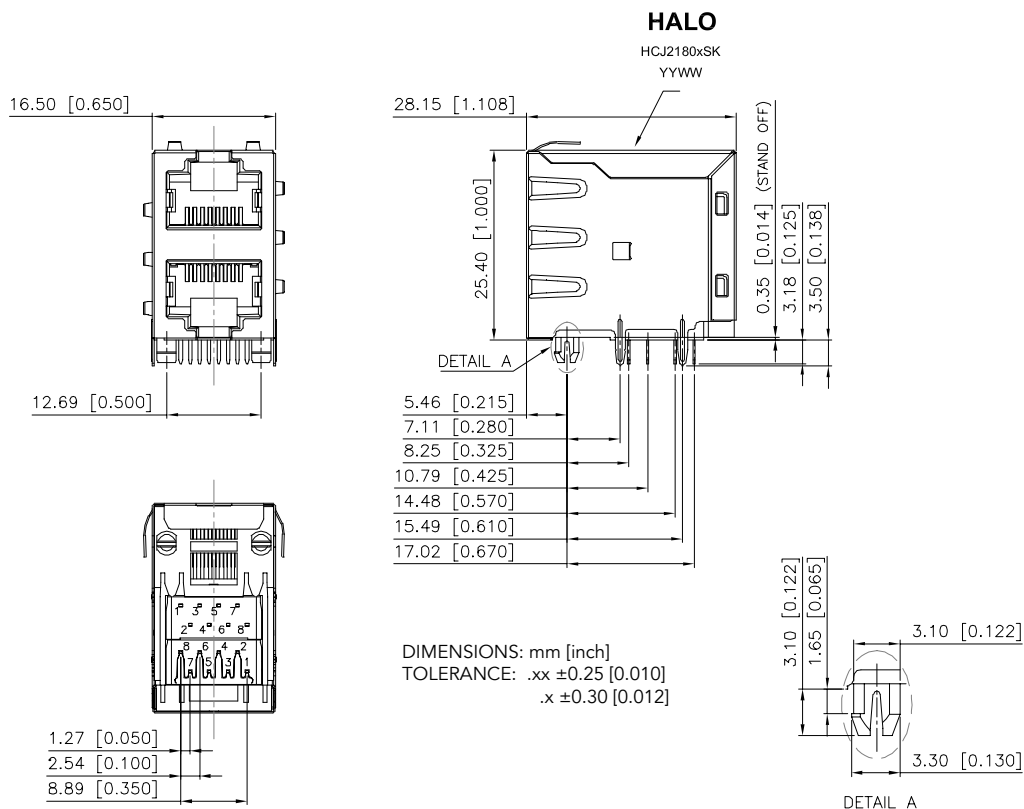
- Shielded RJ45 2x1 Connectors
- Minimum of 750 Mating Cycles
- Multiple Gold Contact Plating Options
- DWV - 1500VAC Contact to Shield
- Current Rating - 1.5A
- Voltage Rating - 125V
- UL94V-0 Flammability Rating

Part Number	Mechanical	Contact Gold Plating (min)	Operating Temp Range	LED Color (L/R)
HCJ21-802SK	A	6μ"	-40°C to +85°C	None
HCJ21-804SK	A	30μ"	-40°C to +85°C	None
HCJ21-805SK	A	50μ"	-40°C to +85°C	None
HCJ21-802SK-L11	B	6μ"	-40°C to +85°C	Green/Green
HCJ21-804SK-L11	B	30μ"	-40°C to +85°C	Green/Green
HCJ21-805SK-L11	B	50μ"	-40°C to +85°C	Green/Green
HCJ21-802SK-L12	B	6μ"	-40°C to +85°C	Green/Yellow
HCJ21-804SK-L12	B	30μ"	-40°C to +85°C	Green/Yellow
HCJ21-805SK-L12	B	50μ"	-40°C to +85°C	Green/Yellow
HCJ21-802SK-L21	B	6μ"	-40°C to +85°C	Yellow/Green
HCJ21-804SK-L21	B	30μ"	-40°C to +85°C	Yellow/Green
HCJ21-805SK-L21	B	50μ"	-40°C to +85°C	Yellow/Green

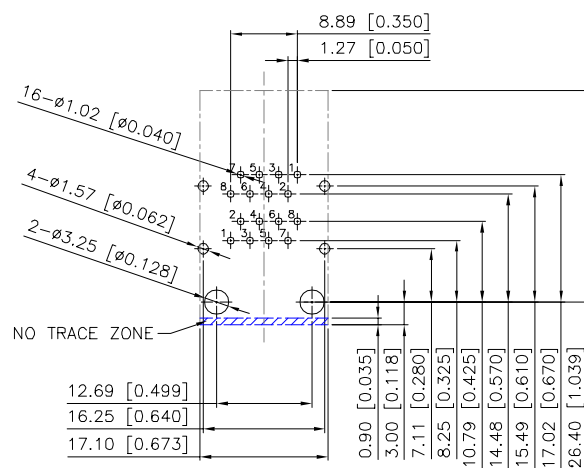
Notes:

1. Alternate footprints, shielding, and LED colors available. Please contact the factory for additional information.
2. Part specific datasheets available upon request.

A - Mechanical (w/o LEDs)

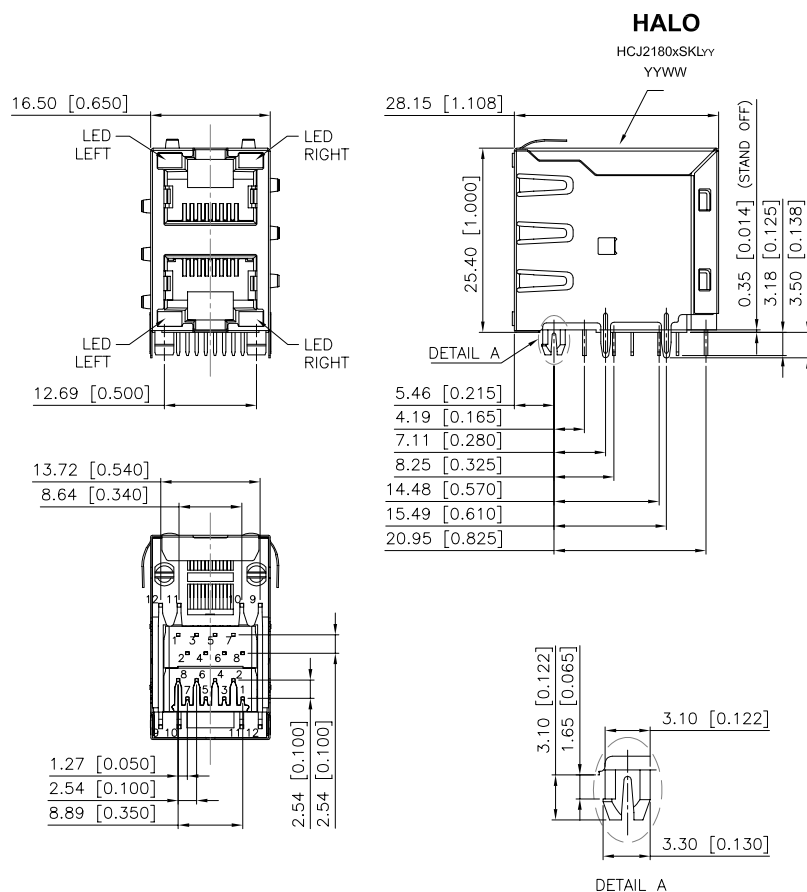


A - PCB Layout (w/o LEDs)

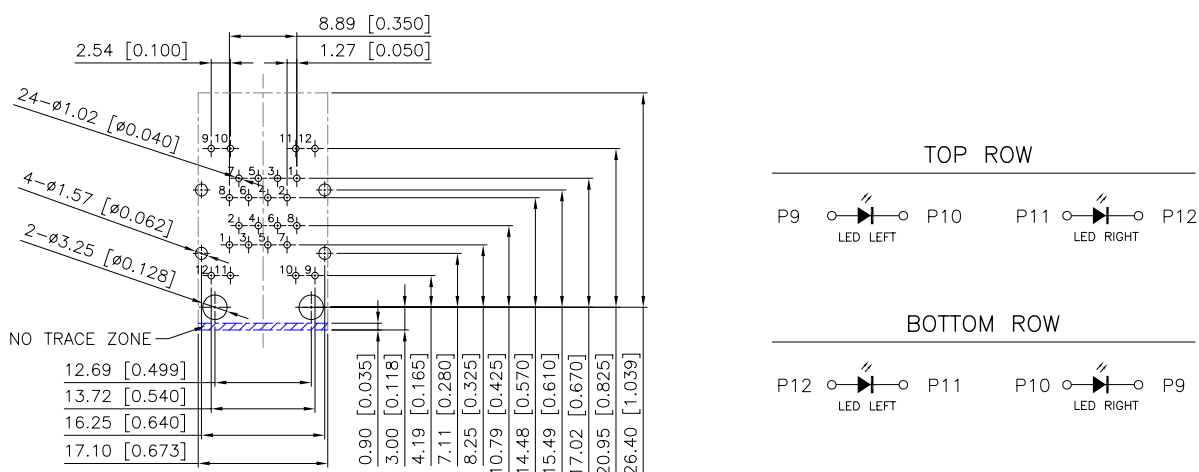


Recommended PCB Layout (Top View)
Dimensional Tolerance: ±0.08 [0.003]

B - Mechanical (w/ LEDs)

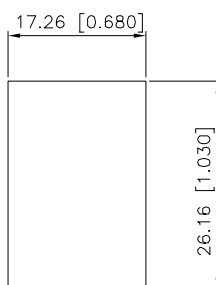


B - PCB Layout (w/ LEDs)



Recommended PCB Layout (Top View)
Dimensional Tolerance: ± 0.08 [0.003]

Recommended Panel Cutout



Mouser Electronics

Authorized Distributor

Click to View Pricing, Inventory, Delivery & Lifecycle Information:

HALO Electronics:

[HCJ21-802SK](#) [HCJ21-802SK-L11](#) [HCJ21-802SK-L12](#) [HCJ21-802SK-L21](#) [HCJ21-804SK](#) [HCJ21-805SK-L21](#)
[HCJ21-804SK-L11](#) [HCJ21-804SK-L12](#) [HCJ21-804SK-L21](#) [HCJ21-805SK](#) [HCJ21-805SK-L11](#) [HCJ21-805SK-L12](#)