

# KMB001

8-Bit to 16-Bit, 40MSPS to 500MSPS ADC Evaluation System

AN1434  
Rev 4.00  
Mar 31, 2011

The Intersil KMB001 evaluation system allows users to evaluate the Intersil portfolio of low-power, 8-bit to 16-bit, high-performance analog-to-digital converters (ADC). These converters run at sampling rates of 40MSPS to 500MSPS and are designed with the Intersil proprietary FemtoCharge™ technology on a standard CMOS process.

The KMB001 evaluation system uses the Intersil Konverter Analyzer software, which displays all pertinent data such as SFDR, SINAD, ENOB, harmonics, current, and power measurements. The software also plots outputs in frequency spectra and time domain.

To begin testing, simply connect the input signal, sampling clock, and target computer to the motherboard, and supply power (Figure 1). The motherboard provides appropriate supply voltages and captures digital data from the daughter card. Daughter cards contain the ADCs and attach directly to the KMB001 to form the ADC evaluation platform (Figure 2).

To ensure proper operation of the system, it is recommended that the most current software version be installed. If Intersil Konverter Analyzer is already installed on the machine, it must be uninstalled prior to installation of the latest version.

## Features

- 18Mb FIFO captures 1M ADC output samples
- USB2.0 interface for rapid data transfer
- Datasheet-style, live-updated display

## KMB001 Evaluation System Contents

The KMB001 is provided with a USB cable to connect to a PC and a 5V power supply. The user need only provide signal and clock sources and a PC running the Microsoft Windows™ XP or Windows 2000 operating system. Intersil Konverter Analyzer software can be downloaded from the Intersil web site.

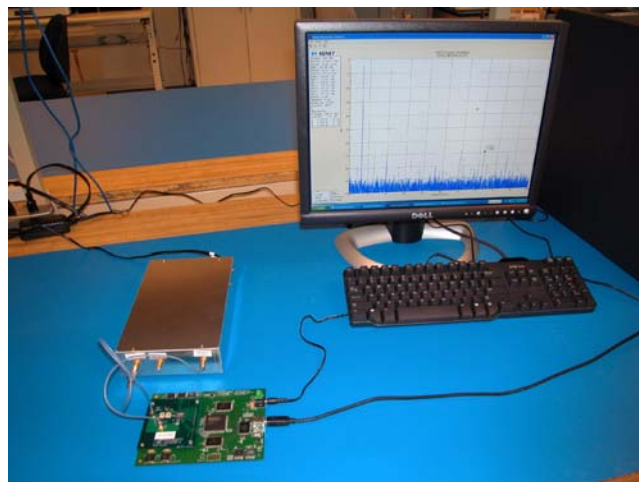


FIGURE 1. EVALUATION PLATFORM, SIGNAL SOURCES AND PC

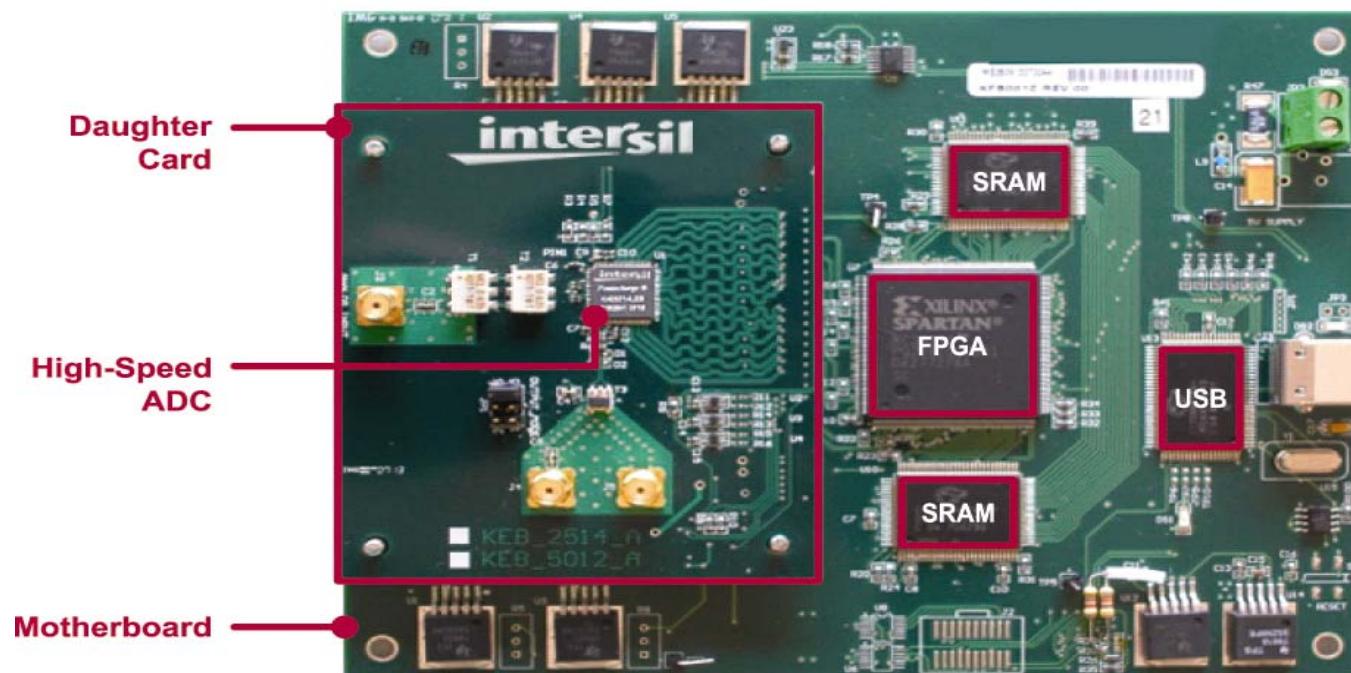


FIGURE 2. EXAMPLE EVALUATION PLATFORM CONNECTIONS (SHOWING KDC2710 DAUGHTER CARD)

TABLE 1. PC SYSTEM REQUIREMENTS

| OPERATING SYSTEM            | PROCESSORS  | RAM                               | DISPLAY RESOLUTION |
|-----------------------------|---|-----------------------------------|--------------------|
| Windows™ XP<br>Windows 2000 | Intel® Pentium (Pentium 4 and above)<br><br>Intel Celeron<br><br>Intel Xeon<br><br>Intel Core<br><br>AMD Athlon 64*<br><br>AMD Opteron<br>AMD Sempron | 512MB<br><br>(1024MB recommended) | 800x600 or higher  |

\* Processor must support SSE2 instruction set.

## Setup and Operation of the ADC Evaluation Platform

To set up the ADC evaluation platform, the following items are required:

1. Intersil KMB001 motherboard
2. USB cable (USB-A to USB-B, 1.25 to 2M long); supplied with KMB001
3. Intersil daughter card containing ADC to be tested
4. Suitable signal and clock sources (see Appendix A on page 6)
5. 4W minimum, 5V power supply (supplied with KMB001)
6. PC with free USB2.0 port, logged in with administrator rights, and fulfilling the PC system requirements shown in Table 1

## Installing the Intersil Konverter Analyzer Software

If an earlier version of the Intersil Konverter Analyzer software is installed on the PC, it must be removed before a new version can be installed.

To uninstall an earlier version, click the Windows **Start** menu, and then click **All Programs > Intersil Konverter Analyzer > Uninstall**.

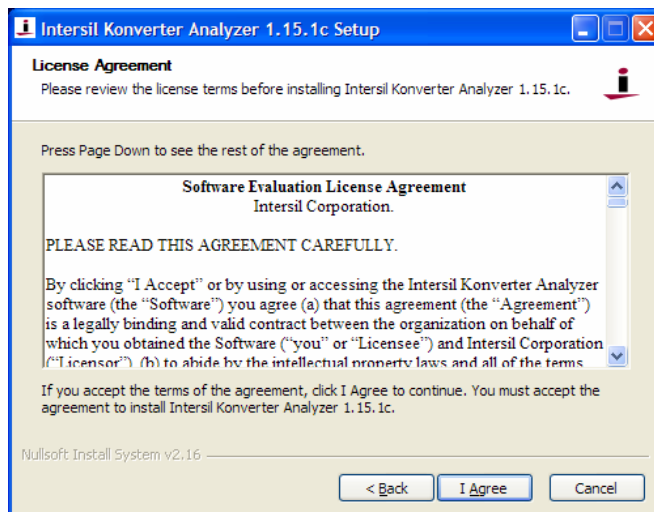
Note that the software version number in the following procedures may not match the latest version being installed, but the instructions are the same.

To install the Intersil Konverter Analyzer Software:

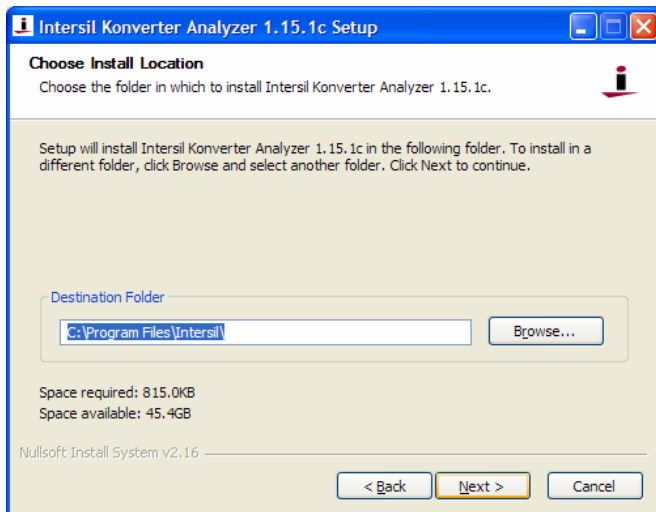
1. Download the Intersil Konverter Analyzer installation files from the Intersil web site at:  
[www.intersil.com/converters/adc\\_eval\\_platform/index.asp](http://www.intersil.com/converters/adc_eval_platform/index.asp)
2. Run IntersilKonverterInstallerVX.XX.Xc.exe for the version you want to install. The **Welcome to the Intersil Konverter Analyzer X.XX.X Setup Wizard** window opens.



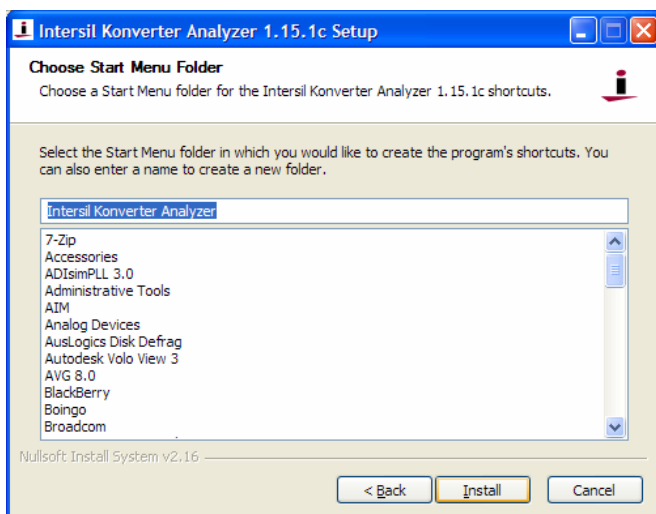
3. In the **Welcome to the Intersil Konverter Analyzer X.XX.X Setup Wizard** window, click **Next**. The **License Agreement** window opens.



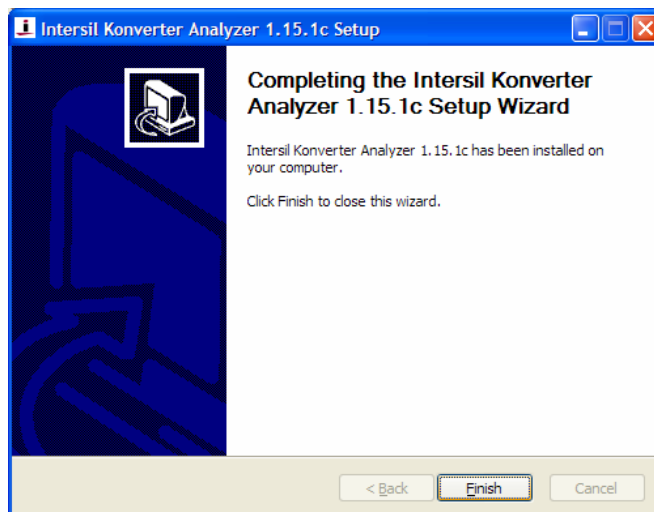
4. In the **License Agreement** window, if you agree with the Software Evaluation License Agreement, click **I Agree**. The **Choose Install Location** window opens.



5. In the **Choose Install Location** window, click **Next**. The **Choose Start Menu Folder** window opens.



6. In the **Choose Start Menu Folder** window, click **Install**. The **Completing the Intersil Konverter Analyzer X.XX.X Setup Wizard** window opens.



7. In the **Completing the Intersil Konverter Analyzer X.XX.X Setup Wizard** window, click **Finish**. A new shortcut icon to the Intersil Konverter Analyzer software appears on the desktop.

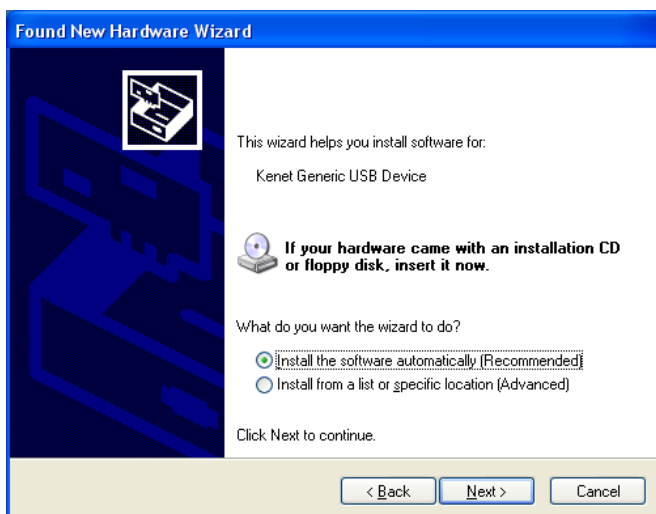
## Installing the USB Driver

To install the USB driver:

1. Install the daughter card onto the KMB001 motherboard. Make sure the mezzanine connector is firmly seated in the motherboard socket.
2. Set and connect the signal source to the analog input SMA connector.
3. Set and connect the clock source to the clock input SMA connector.
4. Connect the USB cable from the KMB001 to the target PC.
5. Connect, then activate, the 5V power supply to the KMB001. The **Welcome to the Found New Hardware Wizard** window opens.



6. In the **Welcome to the Found New Hardware Wizard** window, click the **No, not this time** radio button, and then click **Next**. The USB software installation window opens.



7. In the USB software installation window, click the **Install the software automatically (Recommended)** radio button, and then click **Next**. The **Hardware Installation** window opens.



8. In the **Hardware Installation** window, click **Continue Anyway**. The **Completing the Found New Hardware Wizard** window opens.



9. In the **Completing the Found New Hardware Wizard** window, click **Finish**. The ADC evaluation system is now connected to your PC.

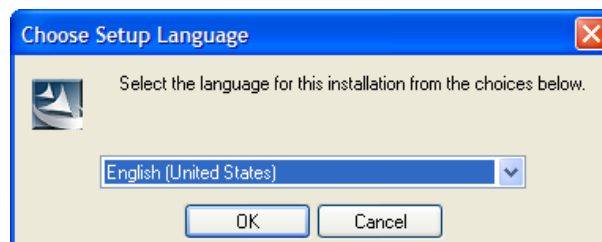
## Installing the MATLAB™ Component Runtime

Intersil Konverter Analyzer software version 1.15.6c and earlier use MATLAB Component Runtime (MCR) version 7.6, while version 1.20c and later use MCR version 7.13. Download the appropriate version from the Intersil web site and use the following procedure to install it. Both versions can coexist on the same PC; therefore, one version does not have to be uninstalled for the other version to be installed.

To install the MATLAB component runtime (MCR):

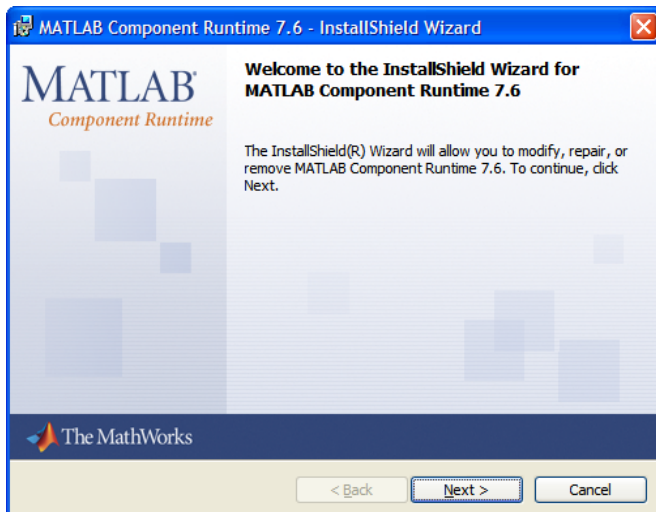
1. Run the MCR version 7.6 or version 7.13 installer from the Intersil web site at:  
[www.intersil.com/converters/adc\\_eval\\_platform/index.asp](http://www.intersil.com/converters/adc_eval_platform/index.asp)

The **Choose Setup Language** window opens.

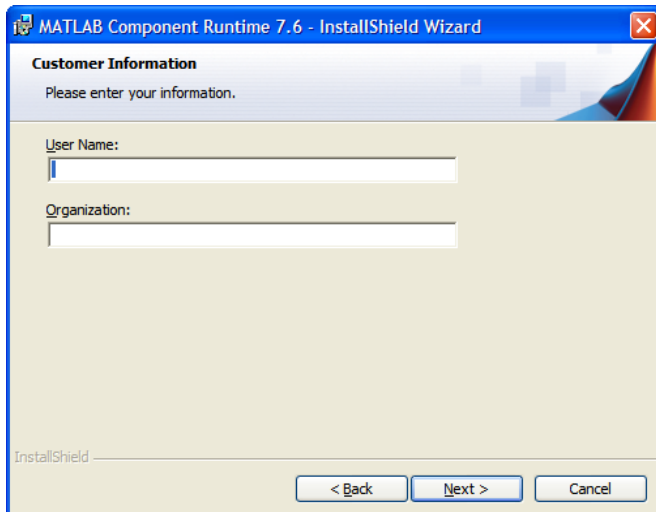


2. In the **Choose Setup Language** window, use the drop-down list to choose the desired setup language (English or Japanese), and then click **OK**. The **Welcome to the InstallShield Wizard for MATLAB Component Runtime X.X** window opens.

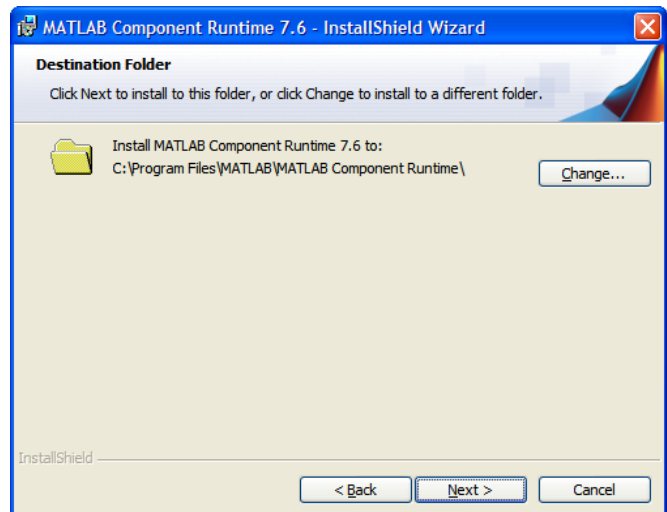




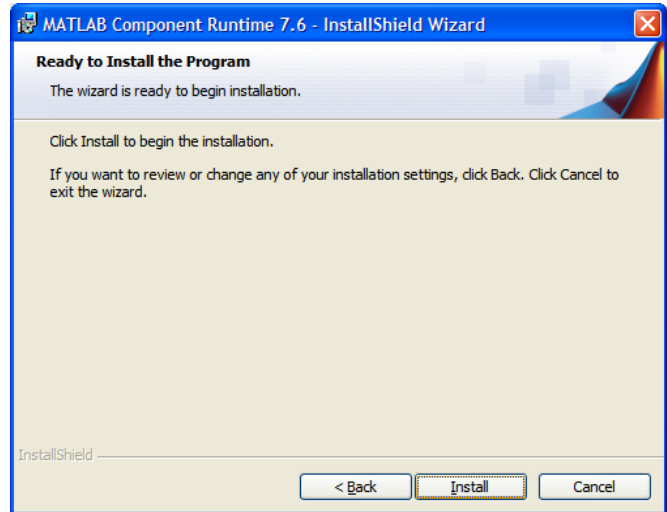
3. In the **Welcome to the InstallShield Wizard for MATLAB Component Runtime X.X** window, click **Next**. The **Customer Information** window opens.



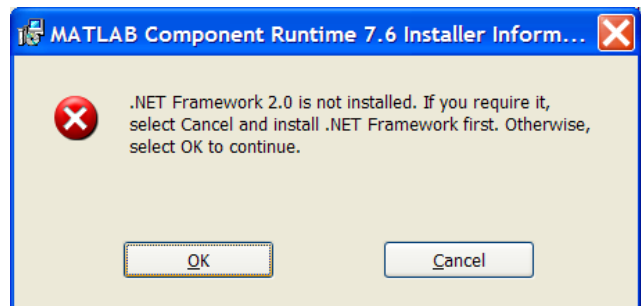
4. In the **Customer Information** window, enter your user name and organization (optional), and then click **Next**. The **Destination Folder** window opens.



5. In the **Destination Folder** window, click **Next** to accept the default destination folder, or click **Change** to select another folder. The **Ready to Install the Program** window opens.

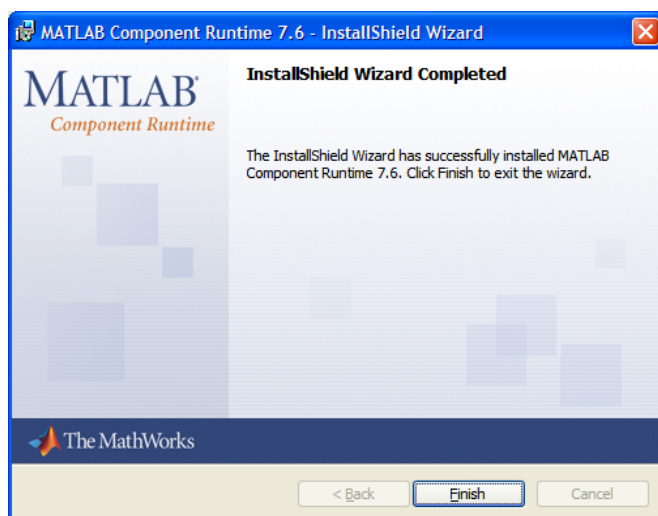


6. In the **Ready to Install the Program** window, click **Install**.
7. If the target PC does not have Microsoft .NET Framework 2.0 installed, the **MATLAB Component Runtime X.X Installer Information** window opens, and a message is displayed regarding the Microsoft .NET Framework.



8. The .NET Framework is not required to run the Intersil Konverter Analyzer software. In the **MATLAB Component**

Runtime X.X Installer Information window, click **OK**. The **InstallShield Wizard Completed** window appears.



9. In the **InstallShield Wizard Completed** window, click **Finish**.

The MATLAB component runtime installation is now complete.

## Running the Intersil Konverter Analyzer Software

To run the Intersil Konverter Analyzer software:

1. On the desktop, double-click the Intersil Konverter Analyzer shortcut icon. The application uncompresses the first time it runs; subsequently, it starts immediately.
2. If the **Welcome to the Found New Hardware Wizard** window opens, click the **No, not this time** radio button and then click **Next**.
3. If the **Hardware Installation** window opens, click **Continue Anyway**.

## Specifications Definitions

**Analog Input Bandwidth** is the analog input frequency at which the spectral output power at the fundamental frequency (as determined by FFT analysis) is reduced by 3dB from its low-frequency value. This is also referred to as Full Power Bandwidth.

**Aperture Delay or Sampling Delay** is the time required after the rise of the clock input for the sampling switch to open, at which time the signal is held for conversion.

**Aperture Jitter** is the RMS variation in aperture delay for a set of samples.

**Clock Duty Cycle** is the ratio of the time the clock wave is at logic high to the total time of one clock period.

**Differential Non-Linearity (DNL)** is the deviation of any code width from an ideal 1 LSB step.

**Effective Number of Bits (ENOB)** is an alternate method of specifying Signal to Noise-and-Distortion Ratio (SINAD). In dB, it is calculated as:  $ENOB = (SINAD - 1.76)/6.02$

**Integral Non-Linearity (INL)** is the deviation of each individual code from a line drawn from zero (1/2 LSB below the first code transition) through positive full-scale (1/2 LSB above the last

code transition). The deviation of any given code from this line is measured from the center of that code.

**Least Significant Bit (LSB)** is the bit that has the smallest value or weight in a digital word. Its value in terms of input voltage is  $V_{FS}/2^{N-1}$  where N is the resolution in bits.

**Missing Codes** are output codes that are skipped and will never appear at the ADC output. These codes cannot be reached with any input value.

**Most Significant Bit (MSB)** is the bit that has the largest value or weight. Its value in terms of input voltage is  $V_{FS}/2$ .

**Pipeline Delay** is the number of clock cycles between the initiation of a conversion and the appearance of the data at the output pins.

**Power Supply Rejection Ratio (PSRR)** is the ratio of a change in input offset voltage to a change in power supply voltage.

**Signal to Noise-and-Distortion (SINAD)** is the ratio of the RMS signal amplitude to the RMS value of the sum of all other spectral components below one-half the clock frequency, including harmonics but excluding DC.

**Signal-to-Noise Ratio (without Harmonics)** is the ratio of the RMS signal amplitude to the sum of all other spectral components below one-half the sampling frequency, excluding harmonics and DC.

**Spurious-Free-Dynamic Range (SFDR)** is the ratio of the RMS signal amplitude to the RMS value of the peak spurious spectral component. The peak spurious spectral component may or may not be a harmonic.

## Appendix A

### Source Requirements

Source jitter and noise will degrade performance. For best test results, a combined jitter (for both clock and signal sources) that does not exceed 200fs is recommended.

### Sample Clock and Input Signal Source Setup

Sample clock settings:

- 50MHz to 500MHz sine, +10dBm

Signal settings:

- 0.4MHz to 250MHz, +7dBm to +10dBm (depending on analog input attenuation)

## Revision History

| DATE    | REVISION | CHANGE   |
|---------|----------|--|
| 3/17/11 | AN1434.4 | Converted to latest Intersil document template.<br>Page 1: changed title from "8-Bit to 14-Bit, 40MSPS to 500MSPS ADC Evaluation System" to "8-Bit to 16-Bit, 40MSPS to 500MSPS ADC Evaluation System"<br>Page 1, para 1, line 2: changed "14-bit" to "16-bit"<br>Page 2, Table 1: Under "Operating System" changed "Windows Server 2003" to "Windows 2000" and removed all Service Pack information for both Windows XP and Windows 2000. |
| 9/22/10 | AN1434.3 | Page 1: Added references to two distinct software versions and installations instructions<br>Page 5: Updated Konverter version 1.18c to 1.20c, MCR version 7.10 to 7.13  |
| 2/4/10  | AN1434.2 | Converted to latest Intersil document template.<br>Changed title from "8-Bit to 14-Bit, 40MSPS to 500MSPS ADC Evaluation Motherboard" to "8-Bit to 14-Bit, 40MSPS to 500MSPS ADC Evaluation System"<br>Page 1: Updated Description, removed Devices Supported paragraph<br>Page 2: Added USB2.0 requirement<br>Page 3: Added uninstall requirement/instructions<br>Page 4: Added description of MCR 7.6/7.10<br>Page 6: Removed Appendix B |

## Notice

1. Descriptions of circuits, software and other related information in this document are provided only to illustrate the operation of semiconductor products and application examples. You are fully responsible for the incorporation or any other use of the circuits, software, and information in the design of your product or system. Renesas Electronics disclaims any and all liability for any losses and damages incurred by you or third parties arising from the use of these circuits, software, or information.
  2. Renesas Electronics hereby expressly disclaims any warranties against and liability for infringement or any other claims involving patents, copyrights, or other intellectual property rights of third parties, by or arising from the use of Renesas Electronics products or technical information described in this document, including but not limited to, the product data, drawings, charts, programs, algorithms, and application examples.
  3. No license, express, implied or otherwise, is granted hereby under any patents, copyrights or other intellectual property rights of Renesas Electronics or others.
  4. You shall not alter, modify, copy, or reverse engineer any Renesas Electronics product, whether in whole or in part. Renesas Electronics disclaims any and all liability for any losses or damages incurred by you or third parties arising from such alteration, modification, copying or reverse engineering.
  5. Renesas Electronics products are classified according to the following two quality grades: "Standard" and "High Quality". The intended applications for each Renesas Electronics product depends on the product's quality grade, as indicated below.

"Standard": Computers; office equipment; communications equipment; test and measurement equipment; audio and visual equipment; home electronic appliances; machine tools; personal electronic equipment; industrial robots; etc.

"High Quality": Transportation equipment (automobiles, trains, ships, etc.); traffic control (traffic lights); large-scale communication equipment; key financial terminal systems; safety control equipment; etc.

Unless expressly designated as a high reliability product or a product for harsh environments in a Renesas Electronics data sheet or other Renesas Electronics document, Renesas Electronics products are not intended or authorized for use in products or systems that may pose a direct threat to human life or bodily injury (artificial life support devices or systems; surgical implantations; etc.), or may cause serious property damage (space system; undersea repeaters; nuclear power control systems; aircraft control systems; key plant systems; military equipment; etc.). Renesas Electronics disclaims any and all liability for any damages or losses incurred by you or any third parties arising from the use of any Renesas Electronics product that is inconsistent with any Renesas Electronics data sheet, user's manual or other Renesas Electronics document.
  6. When using Renesas Electronics products, refer to the latest product information (data sheets, user's manuals, application notes, "General Notes for Handling and Using Semiconductor Devices" in the reliability handbook, etc.), and ensure that usage conditions are within the ranges specified by Renesas Electronics with respect to maximum ratings, operating power supply voltage range, heat dissipation characteristics, installation, etc. Renesas Electronics disclaims any and all liability for any malfunctions, failure or accident arising out of the use of Renesas Electronics products outside of such specified ranges.
  7. Although Renesas Electronics endeavors to improve the quality and reliability of Renesas Electronics products, semiconductor products have specific characteristics, such as the occurrence of failure at a certain rate and malfunctions under certain use conditions. Unless designated as a high reliability product or a product for harsh environments in a Renesas Electronics data sheet or other Renesas Electronics document, Renesas Electronics products are not subject to radiation resistance design. You are responsible for implementing safety measures to guard against the possibility of bodily injury, injury or damage caused by fire, and/or danger to the public in the event of a failure or malfunction of Renesas Electronics products, such as safety design for hardware and software, including but not limited to redundancy, fire control and malfunction prevention, appropriate treatment for aging degradation or any other appropriate measures. Because the evaluation of microcomputer software alone is very difficult and impractical, you are responsible for evaluating the safety of the final products or systems manufactured by you.
  8. Please contact a Renesas Electronics sales office for details as to environmental matters such as the environmental compatibility of each Renesas Electronics product. You are responsible for carefully and sufficiently investigating applicable laws and regulations that regulate the inclusion or use of controlled substances, including without limitation, the EU RoHS Directive, and using Renesas Electronics products in compliance with all these applicable laws and regulations. Renesas Electronics disclaims any and all liability for damages or losses occurring as a result of your noncompliance with applicable laws and regulations.
  9. Renesas Electronics products and technologies shall not be used for or incorporated into any products or systems whose manufacture, use, or sale is prohibited under any applicable domestic or foreign laws or regulations. You shall comply with any applicable export control laws and regulations promulgated and administered by the governments of any countries asserting jurisdiction over the parties or transactions.
  10. It is the responsibility of the buyer or distributor of Renesas Electronics products, or any other party who distributes, disposes of, or otherwise sells or transfers the product to a third party, to notify such third party in advance of the contents and conditions set forth in this document.
  11. This document shall not be reprinted, reproduced or duplicated in any form, in whole or in part, without prior written consent of Renesas Electronics.
  12. Please contact a Renesas Electronics sales office if you have any questions regarding the information contained in this document or Renesas Electronics products.
- (Note 1) "Renesas Electronics" as used in this document means Renesas Electronics Corporation and also includes its directly or indirectly controlled subsidiaries.
- (Note 2) "Renesas Electronics product(s)" means any product developed or manufactured by or for Renesas Electronics.

(Rev.4.0-1 November 2017)



### SALES OFFICES

### Renesas Electronics Corporation

<http://www.renesas.com>

Refer to "<http://www.renesas.com/>" for the latest and detailed information.

**Renesas Electronics America Inc.**  
1001 Murphy Ranch Road, Milpitas, CA 95035, U.S.A.  
Tel: +1-408-432-8888, Fax: +1-408-434-5351

**Renesas Electronics Canada Limited**  
9251 Yonge Street, Suite 8309 Richmond Hill, Ontario Canada L4C 9T3  
Tel: +1-905-237-2004

**Renesas Electronics Europe Limited**  
Dukes Meadow, Millboard Road, Bourne End, Buckinghamshire, SL8 5FH, U.K  
Tel: +44-1628-651-700, Fax: +44-1628-651-804

**Renesas Electronics Europe GmbH**  
Arcadiastrasse 10, 40472 Düsseldorf, Germany  
Tel: +49-211-6503-0, Fax: +49-211-6503-1327

**Renesas Electronics (China) Co., Ltd.**  
Room 1709 Quantum Plaza, No.27 ZhichunLu, Haidian District, Beijing, 100191 P. R. China  
Tel: +86-10-8235-1155, Fax: +86-10-8235-7679

**Renesas Electronics (Shanghai) Co., Ltd.**  
Unit 301, Tower A, Central Towers, 555 Langao Road, Putuo District, Shanghai, 200333 P. R. China  
Tel: +86-21-2226-0888, Fax: +86-21-2226-0999

**Renesas Electronics Hong Kong Limited**  
Unit 1601-1611, 16/F., Tower 2, Grand Century Place, 193 Prince Edward Road West, Mongkok, Kowloon, Hong Kong  
Tel: +852-2265-6688, Fax: +852-2886-9022

**Renesas Electronics Taiwan Co., Ltd.**  
13F, No. 363, Fu Shing North Road, Taipei 10543, Taiwan  
Tel: +886-2-8175-9600, Fax: +886-2-8175-9670

**Renesas Electronics Singapore Pte. Ltd.**  
80 Bendemeer Road, Unit #06-02 Hyflux Innovation Centre, Singapore 339949  
Tel: +65-6213-0200, Fax: +65-6213-0300

**Renesas Electronics Malaysia Sdn.Bhd.**  
Unit 1207, Block B, Menara Amcorp, Amcorp Trade Centre, No. 18, Jln Persiaran Barat, 46050 Petaling Jaya, Selangor Darul Ehsan, Malaysia  
Tel: +60-3-7955-9390, Fax: +60-3-7955-9510

**Renesas Electronics India Pvt. Ltd.**  
No.777C, 100 Feet Road, HAL 2nd Stage, Indiranagar, Bangalore 560 038, India  
Tel: +91-80-67208700, Fax: +91-80-67208777

**Renesas Electronics Korea Co., Ltd.**  
17F, KAMCO Yangjae Tower, 262, Gangnam-daero, Gangnam-gu, Seoul, 06265 Korea  
Tel: +82-2-558-3737, Fax: +82-2-558-5338



# Mouser Electronics

Authorized Distributor

Click to View Pricing, Inventory, Delivery & Lifecycle Information:

[Renesas Electronics:](#)

[ISLA110P50IR72EV1Z](#) [KMB-001LEVALZ](#)