

NEW

RTF Series 7.2mm x 7.2mm Low Profile Rotary DIP Switches

Features/Benefits

- New generation
- Most compact rotary DIP switch
- Thru-hole, Crimped, J-Hook, Angled and Surface Mount Models
- New designs with different actuators
- IP67
- RoHS compatible and compliant

Typical Applications

- Industrial and control automation
- Automotive
- Computer and peripherals
- Instrumentation
- Security devices



H
DIP

Specifications

CONTACT RATING: 100mA, DC 5V (switching)
100mA, DC 50V (non-switching)

MECHANICAL & ELECTRICAL LIFE: 10,000 cycles

INITIAL CONTACT RESISTANCE: 100 milliohms max.

INSULATION RESISTANCE: 100 megohms min.

OPERATING TEMPERATURE: -40°C to 85°C.

STORAGE TEMPERATURE: -40°C to 85°C.

OPERATING FORCE: 200 gf max.

SOLDER CONDITIONS:

- Iron soldering: C/K/S/A/J termination: 3s/350°C
- Wave soldering: C/K/A termination: 5s/280°C
- Reflow soldering: S/J termination: 10s/260°C

SOLDERABILITY: Dip and look solderability testing per C&K spec #448

PACKAGING: Switches are supplied in rigid dispensing tubes in full-tube quantities only, this may affect order quantities. Number of switches per tube varies with model. Tape and reel packing is only available with "S" and "J" type terminations.

Materials

COVER: Stainless steel

BASE: LCP

ACTUATOR: LCP

CONTACTS: Phosphor bronze

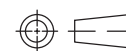
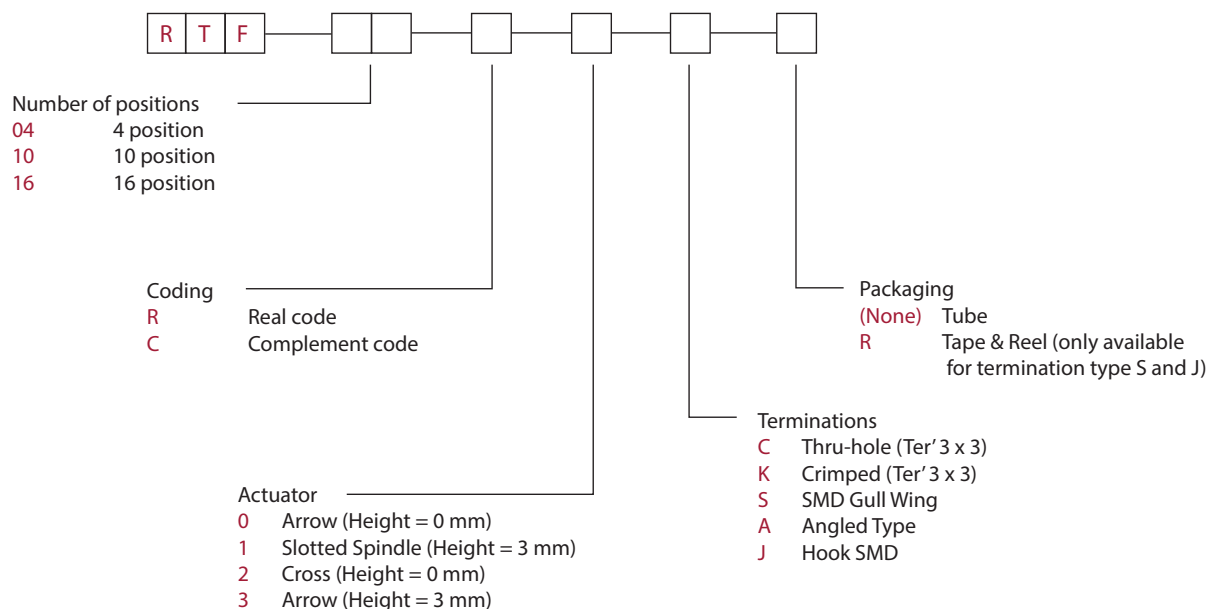
SPRING & GUIDE PLATE: Stainless steel

TERMINALS: Brass

O-RING: Silicon

How To Order

The Build-A Switch concept allows you to mix and match options to create the switch you need. Below is a complete listing of options shown in catalog. To order, simply select desired option from each category and place in the appropriate box.



Third Angle
Projection

RTF Series

7.2mm x 7.2mm Low Profile Rotary DIP Switches

NEW

CODING

R Real Code

04 POSITION

		Real Code				
		C	1	2	4	8
04 POSITION	0	●				
	1	●	●			
	2	●		●		
	3	●	●	●		

10 POSITION

		Real Code				
		C	1	2	4	8
10 POSITION	0	•	•			
	1	•	•	•		
	2	•		•	•	
	3	•	•	•	•	
	4	•			•	•
	5	•	•		•	•
	6	•	•	•		
	7	•		•	•	
	8	•	•	•	•	
	9	•	•			•

16 POSITION

		Real Code				
		C	1	2	4	8
16 POSITION	0	•	•			
	1	•	•	•		
	2	•		•	•	
	3	•	•	•	•	
	4	•			•	•
	5	•	•		•	•
	6	•	•	•		
	7	•		•	•	
	8	•	•	•	•	
	9	•	•			•
	A	•	•	•	•	•
	B	•		•	•	•
	C	•	•	•	•	•
	D	•		•	•	•
	E	•	•	•	•	•
	F	•	•			•

C Complement Code

04 POSITION

		Complement Code				
		C	1	2	4	8
04 POSITION	0	●	●	●	●	●
	1	●		●	●	●
	2	●	●		●	●
	3				●	●

10 POSITION

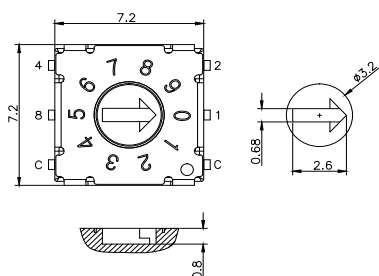
		Complement Code				
		C	1	2	4	8
10 POSITION	0	•	•	•	•	•
	1	•	•	•	•	•
	2	•	•	•	•	•
	3	•	•	•	•	•
	4	•	•	•	•	•
	5	•	•	•	•	•
	6	•	•	•	•	•
	7	•	•	•	•	•
	8	•	•	•	•	•
	9	•	•	•	•	•

16 POSITION

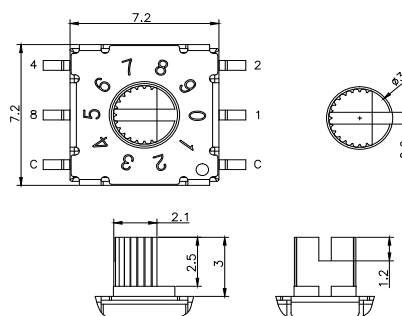
		Complement Code				
		C	1	2	4	8
16 POSITION	0	•	•	•	•	•
	1	•	•	•	•	•
	2	•	•	•	•	•
	3	•	•	•	•	•
	4	•	•	•	•	•
	5	•	•	•	•	•
	6	•	•	•	•	•
	7	•	•	•	•	•
	8	•	•	•	•	•
	9	•	•	•	•	•
	A	•	•	•	•	•
	B	•	•	•	•	•
	C	•	•	•	•	•
	D	•	•	•	•	•
	E	•	•	•	•	•
	F	•	•	•	•	•

ACTUATOR

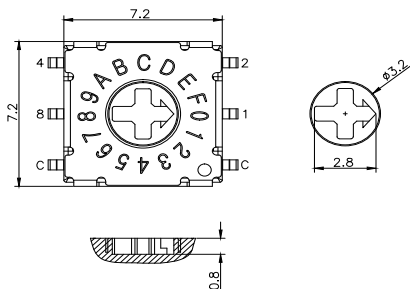
0 Arrow (Height = 0 mm)



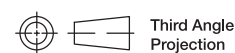
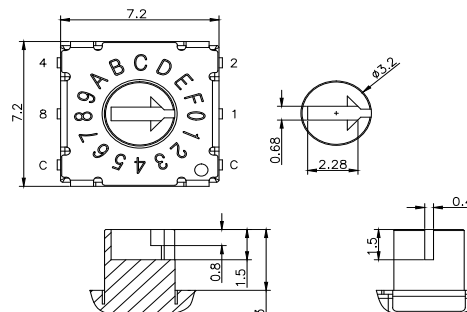
1 Slotted Spindle (Height = 3 mm)



2 Cross (Height = 0 mm)



3 Arrow (Height = 3 mm)



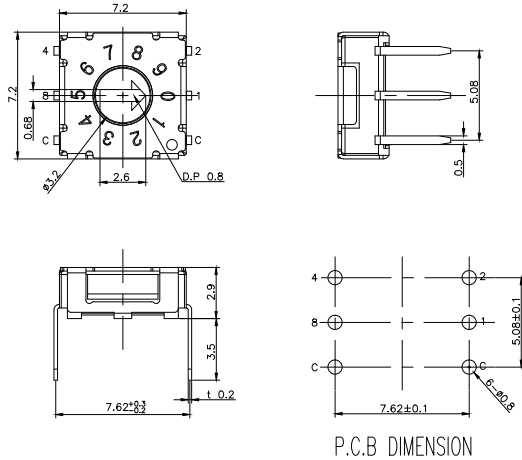
Third Angle
Projection

NEW

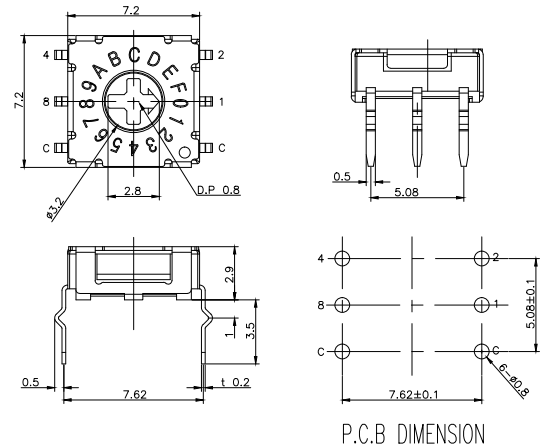
RTF Series 7.2mm x 7.2mm Low Profile Rotary DIP Switches

TERMINATIONS

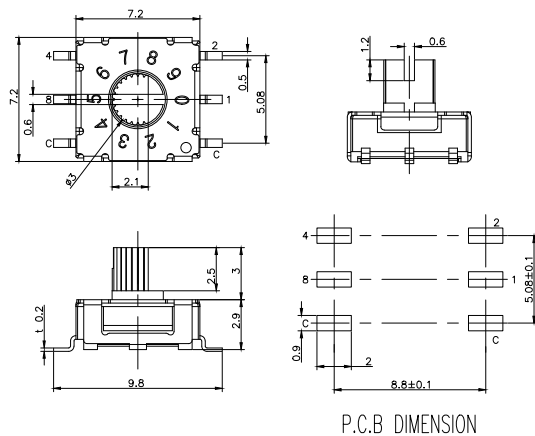
C Thru-hole



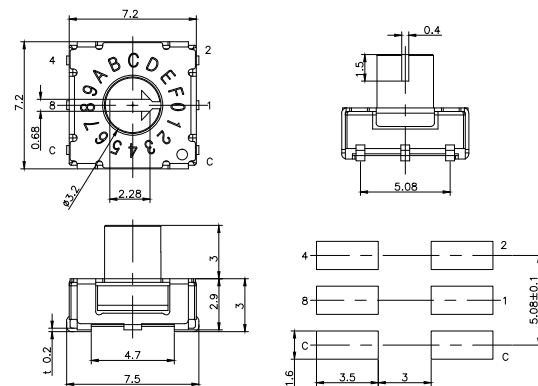
K Crimped (Ter' 3 x 3)



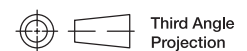
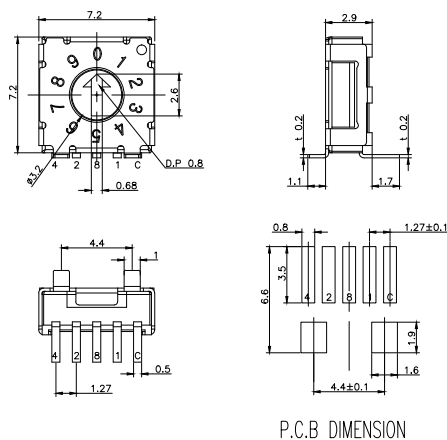
S SMD Gull Wing



J Hook SMD



A Angled Type



Dimensions are shown: Inch (mm)
Specifications and dimensions subject to change

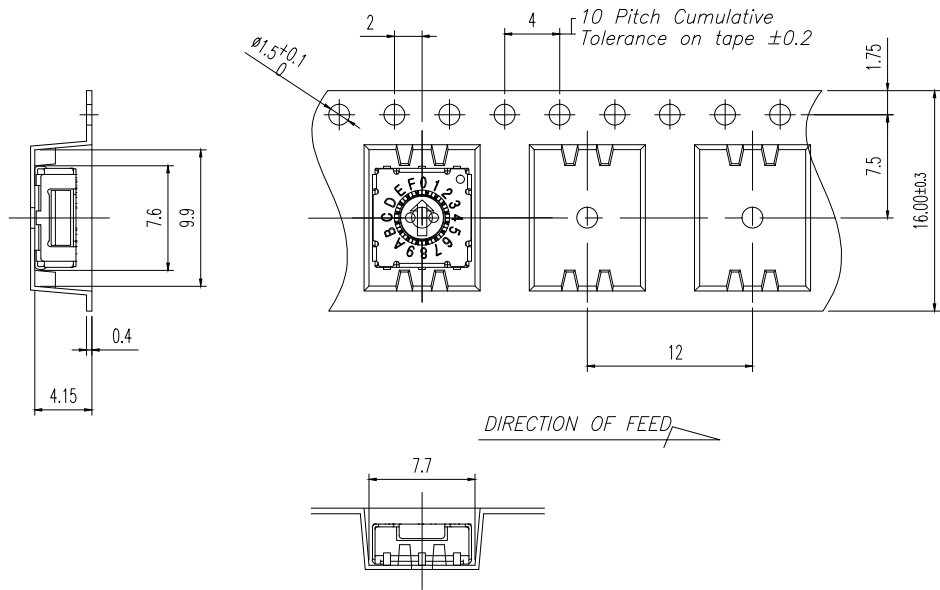
RTF Series 7.2mm x 7.2mm Low Profile Rotary DIP Switches

NEW

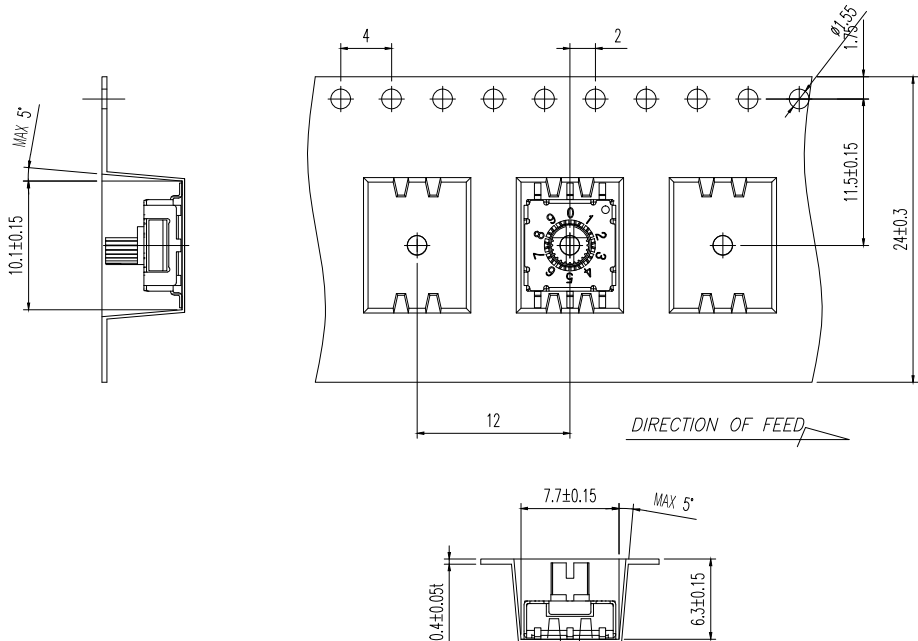
TAPE & REEL

DIP

The tape and reel is applicable for
Actuator 0 or 2 with
Termination S or J
1300 pcs/reel



The tape and reel is applicable for
Actuator 1 or 3 with
Termination S or J
800 pcs/reel



Dimensions are shown: Inch (mm)
Specifications and dimensions subject to change

Mouser Electronics

Authorized Distributor

Click to View Pricing, Inventory, Delivery & Lifecycle Information:

C&K Switches:

[RTF04R0C](#) [RTF10R1S](#) [RTF16R2J](#) [RTF16R3A](#)