



# ATP22 Series

## Anti-Vandal Sealed Pushbutton Switch

### Features/Benefits

- Momentary or Lock version
- IP67 sealed & IK10 (Stainless steel bushing)
- Capable of up to 3A resistive load
- 50,000 life cycle at full load
- Various colors of LED illuminate indicator
- Choices of pushbutton with symbol on spot, ring or power logo

### Typical Applications

- Control Panels including car park and traffic light
- Industrial Instruments
- Lifts / Escalator
- Communication equipment
- Alarm, safety and security systems



CNS

### Specifications

FUNCTION: Single pole and double poles  
CONTACT ARRANGEMENT: N.O. and N.C.  
MOUNTING TYPE: Threaded front panel mount  
TORQUE FOR THREADED BODY: 5-14 Nm

### Mechanical

OPERATING LIFE: Momentary 1,000,000 cycles  
Self-lock 500,000 cycles  
TOTAL TRAVEL: about 3.2 mm  
OPERATING FORCE: 1 pole 2.5 ± 1N  
2 pole 3.5 ± 1N

### Electrical

CONTACT RATING: 1th 5A/250VAC  
3A / 250VAC  
3A / 28VDC  
OPERATING LIFE: 50,000 make-and-break cycles at full load  
DIELECTRIC STRENGTH: 2,000 V RMS @ sea level  
INSULATION RESISTANCE: 1,000 MΩ min. @ 500 VDC  
INITIAL CONTACT RESISTANCE : 50 mΩ max @1A 12VDC

### Materials

BUSHING: Stainless steel / Aluminum alloy  
BASE: PBT (UL 94-A0), PC (UL 94-V2)  
ACTUATOR: PC; Stainless steel / Aluminum alloy  
INTERNAL ASSEMBLY: POM / PA66  
SPRING: Steel  
SEALING / O-ring: Silicone  
TERMINALS: Brass with silver or gold plated  
CONTACT: Copper, silver plated

### Operating Environment

OPERATING TEMPERATURE: -20°C to +55°C  
SEALING / PROTECTION: IP67 / IK10 (Stainless steel bushing)

**NOTE:** Specifications and materials listed above are for switches with standard options.  
For information on specific and custom switches, please contact Customer Service.

### Build-A-Switch

To order, simply select desired option from each category and place in the appropriate box.

A	T	P	2	2																
---	---	---	---	---	--	--	--	--	--	--	--	--	--	--	--	--	--	--	--	--

Designation  
ATP22 Series

Actuator Style  
S Standard

Actuator Indicator  
L0 Without LED  
L3 Moving ring  
L6 Ring LED\*  
L7 Ring LED + power logo\*\*  
L8 Ring LED + power logo\*\*\*

#### Illumination

Color	Dual color
0 Without LED	A Red & Green
2 White	B Red & Blue
3 Red	D Blue & Yellow
5 Yellow	G Red & Yellow
6 Green	H Green & Yellow
7 Blue	J Orange & Green

#### LED voltage (20mA)

00 Without LED  
03 3V  
06 6V  
12 12V  
24 24V  
36 36V  
A1 110V AC  
A2 220V AC

Terminal plating  
Q Silver  
G Gold

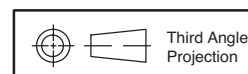
Termination  
03 STD solder lug  
W1 Wire lead 500mm\*\*\*\*\*  
W2 Wire lead 1,000mm\*\*\*\*\*

Mechanical function  
A Momentary  
E Lock

Contact arrangement  
S SPDT  
D DPDT

Bushing type  
B0 Stainless (Round)  
B3 Al alloy: black anodized (Round)  
M0 Stainless (Double D-shape)\*\*\*\*

\* Available on ring color CAP of red/green/blue only  
\*\* Power logo and ring with clear color CAP available on double D-shape bushing only  
\*\*\* Power logo and ring with red/green/blue color CAP available on double D-shape bushing only  
\*\*\*\* Not available on L0/L3/L6 actuator indicator  
\*\*\*\*\* Available upon request, please contact your sales representative for details



Dimensions are shown: mm (inches)  
Specifications and dimensions subject to change

# ATP22 Series Anti-Vandal Sealed Pushbutton Switch

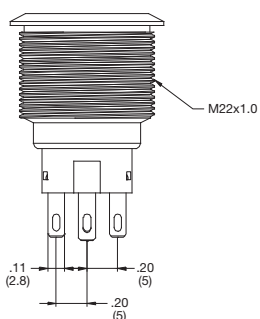
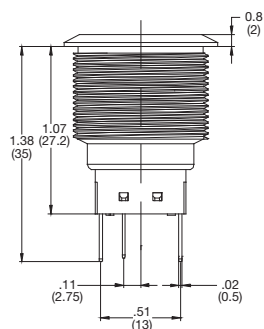


A

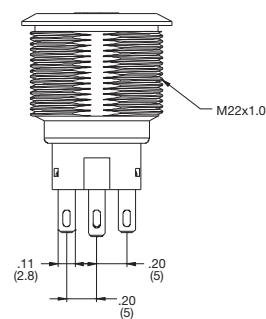
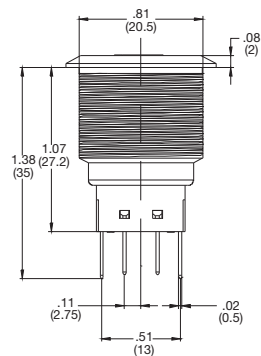
Pushbutton

## STANDARD VIEW

ROUND BUSHING

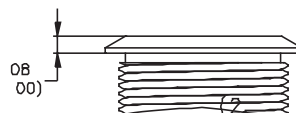


DOUBLE-D BUSHING



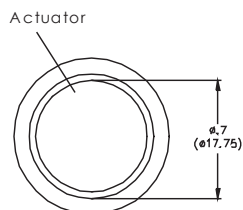
## ACTUATOR STYLE

**S** STANDARD

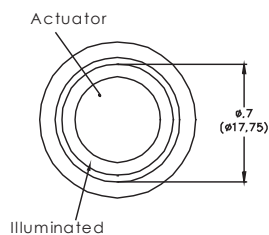


## ACTUATOR INDICATOR

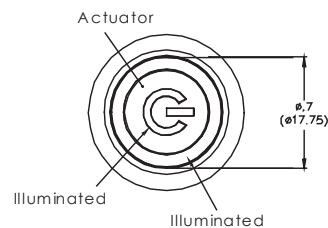
**L0** WITHOUT LED



**L3 & L6** RING LED



**L7 & L8** POWER & RING





# ATP22 Series Anti-Vandal Sealed Pushbutton Switch

Pushbutton

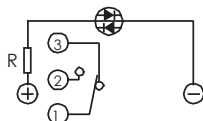
A

## CIRCUIT

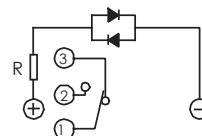
SPDT



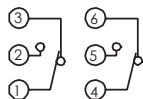
SPDT - SINGLE COLOR LED



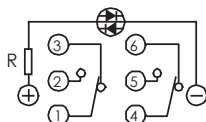
SPDT - DUAL COLOR LED



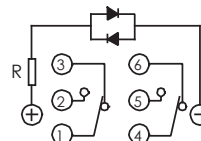
DPDT



DPDT - SINGLE COLOR LED

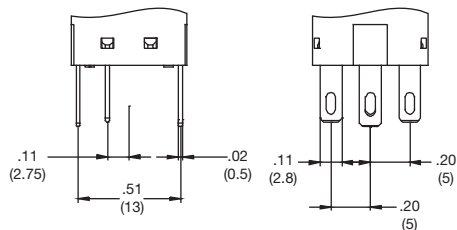


DPDT - DUAL COLOR LED

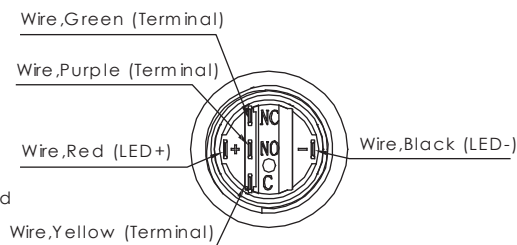
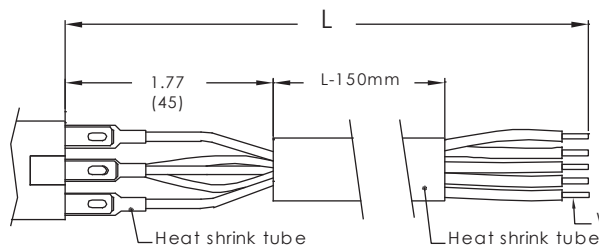


## TERMINATION

**03 SOLDERLUG**



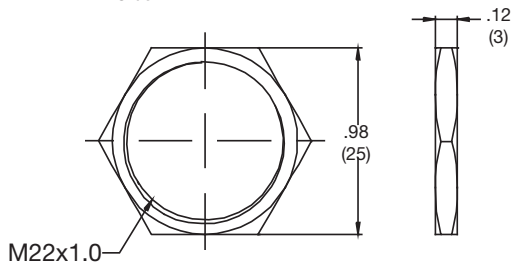
**W1 OR W2 WIRE LEAD**



## HARDWARE

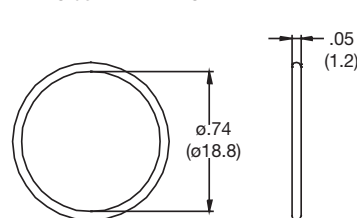
**HEX NUT**

Order PN: ATP22-HN



**O RING**

Order PN: ATP22-OR



# Mouser Electronics

Authorized Distributor

Click to View Pricing, Inventory, Delivery & Lifecycle Information:

## C&K Switches:

[ATP22SL6706B0SA03Q](#) [ATP22SL0000B0DAW1Q](#) [ATP22SL0000B3SA03Q](#) [ATP22SL32A2B0DE03Q](#)  
[ATP22SL3324B0SE03Q](#) [ATP22SL3603B0SA03Q](#) [ATP22SL3612B0SE03Q](#) [ATP22SL3712B0DE03Q](#)  
[ATP22SL3A24B0DA03Q](#) [ATP22SL3A24B0DE03Q](#) [ATP22SL3J03B0SA03Q](#) [ATP22SL6324B0SA03Q](#)  
[ATP22SL63A2B0SE03Q](#) [ATP22SL6612B0DE03Q](#) [ATP22SL6624B0SA03Q](#) [ATP22SL6624B0SAW1Q](#)  
[ATP22SL6724B0SAW1Q](#) [ATP22SL7324M0SAW1Q](#) [ATP22SL7324M0SEW1Q](#) [ATP22SL7B24M0SA03Q](#)  
[ATP22SL7H12M0SA03G](#) [ATP22SL8624M0SA03Q](#) [ATP22SL8624M0SE03Q](#)