



User Guide

UG001000

TSL2520

TSL2520 EVM

Highly Sensitive Ambient Light Sensor

v1-00 • 2020-Dec-14

Content Guide

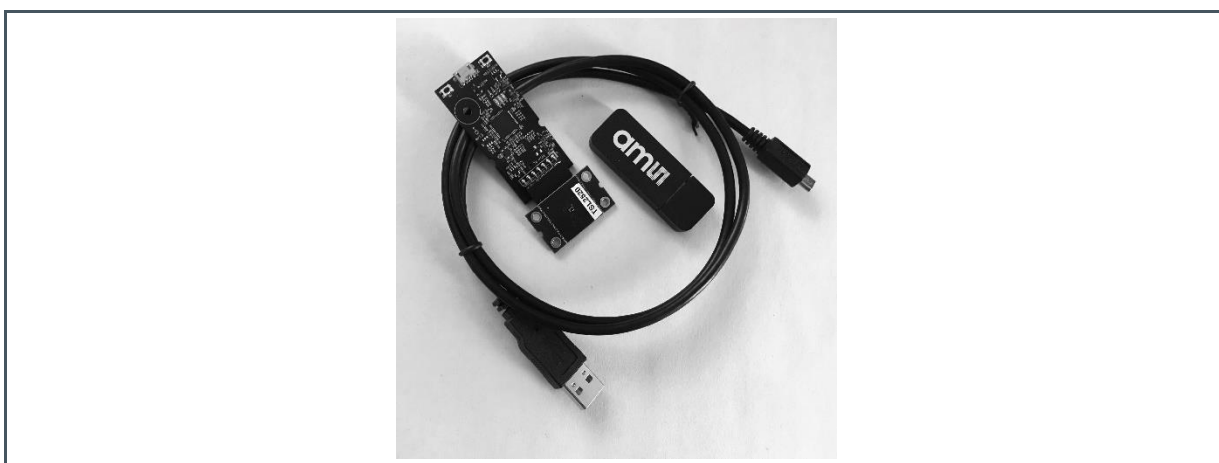
1	Introduction	3	4.5	Device ID Information	10
1.1	Kit Content.....	3	4.6	Log Status and Control Information.....	10
1.2	Ordering Information	3	4.7	“Configuration” Tab.....	11
2	Getting Started	4	4.8	“ALS” Tab	12
3	Hardware Description	5	5	Resources	14
4	Software Description	6	6	Revision Information	15
4.1	Connect Software to Hardware	6	7	Legal Information.....	16
4.2	System Menus.....	7			
4.3	System Level Controls	9			
4.4	Auto Polling	9			

1 Introduction

The TSL2520 evaluation kit comes with everything needed to evaluate the TSL2520. The device features highly sensitive digital ambient light sensing (ALS).

1.1 Kit Content

Figure 1:
Evaluation Kit Contents



No.	Item	Description
1	TSL2520 Daughter Card	PCB with TSL2520 sensor installed
2	EVM Controller Board	Used to communicate USB to I2C
3	USB Cable (A to Micro-B)	Connects EVM controller to PC
4	Flash Drive	Include application installer and documents

1.2 Ordering Information

Ordering Code	Description
TSL2520 EVM	TSL2520 Highly Sensitive Ambient Light Sensor Evaluation Kit

2 Getting Started

The software should be installed prior to connecting any hardware to the computer. Follow the instructions found in the Quick Start Guide (QSG). This loads the required driver for the USB interface and the device's graphical user interface (GUI).

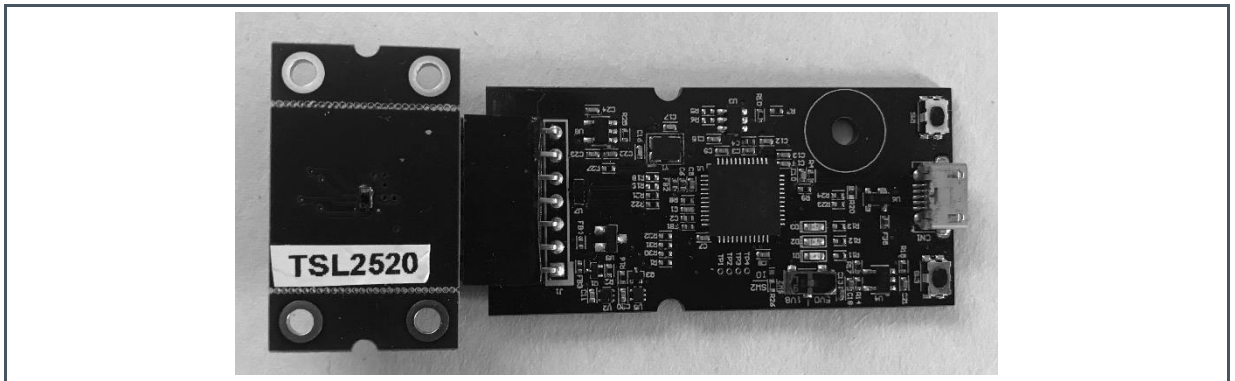
The balance of this document identifies and describes the controls available on the GUI. In combination with the TSL2520 datasheet, the QSG and application notes available on the **ams** website, www.ams.com, there should be enough information to allow evaluation of the TSL2520 device.

3 Hardware Description

The hardware consists of the EVM Controller, the TSL2520 EVM daughter card, and a USB interface cable. The EVM controller board provides power and I2C communication to the daughter card through a seven-pin connector. When the EVM controller is connected to the PC through USB, a green LED light on power up to indicate the system is getting power.

For schematics, layout and BOM information please see the documents included with the install located in the TSL2520 EVM folder (All Programs -> ams -> TSL2520 EVM -> Documents).

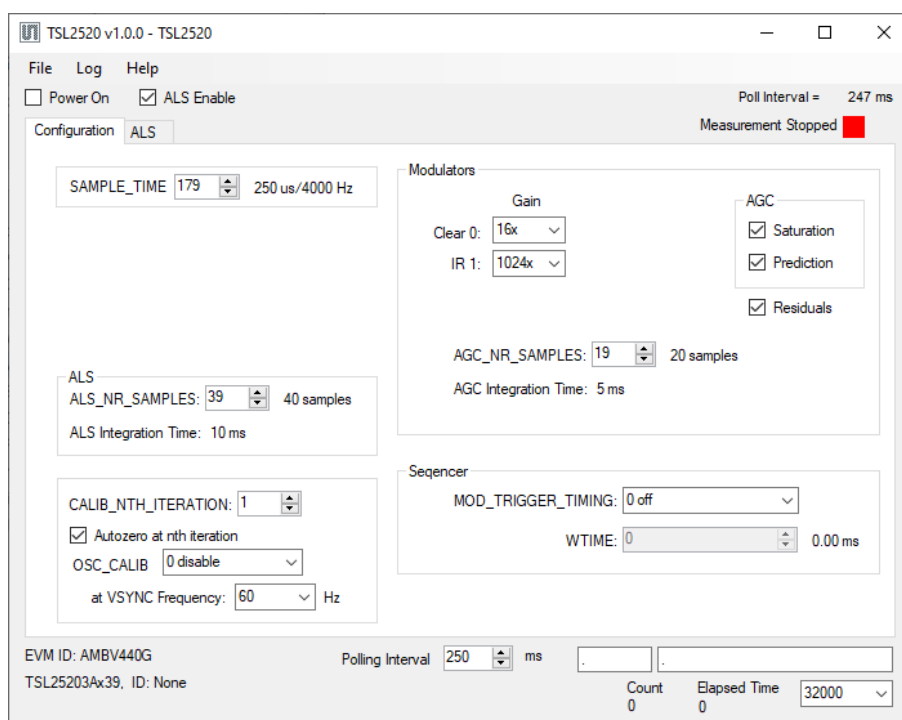
Figure 2:
Evaluation Kit Hardware



4 Software Description

The main window (Figure 3) contains the system menus, system level controls, device information and logging status. The Configuration tab contains controls to setup ALS detection parameters. ALS tab display ALS data and Mod Gain data. The ALS tab contains a plotting area in which raw ALS data is drawn. The application polls the ALS raw data continuously.

Figure 3:
GUI Main Window



4.1 Connect Software to Hardware

On startup, the software automatically connects to the hardware. On successful initialization, the software displays a main window, containing controls pertinent to the connected device. If the software detects an error, an error window appears. If “Device not found or is unsupported” appears, verify the correct daughterboard is properly connected to the EVM controller board. If “Cannot connect to EVM board” appears, verify the USB cable is connected. When the EVM controller board is connected to the USB, a green LED lights on power up to indicate the USB cable is connected and providing power to the system. The LED will remain lit until the any software application opens the controller. The light will then be switched off so that it will not interfere with any light measurements.

If the EVM board disconnects from the USB bus while the program is running, it displays an error message and then terminates. Reconnect the EVM board and restart the program.

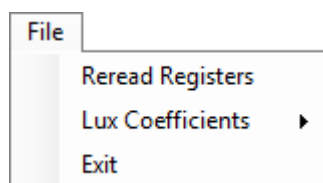
4.2 System Menus

At the top of the window there are pull-down menus labeled “File”, “Log”, and “Help”. The **File** menu provides basic application-level control. The **Log** menu controls the logging function, and the **Help** menu provides version and copyright information for the application.

4.2.1 File Menu

The File menu contains the following functions:

Figure 4:
File Menu



The **Reread Registers** function forces the program to re-read all of the control registers from the device and display them on the screen. This does not read the output data, because the program reads those registers continually while it is running.

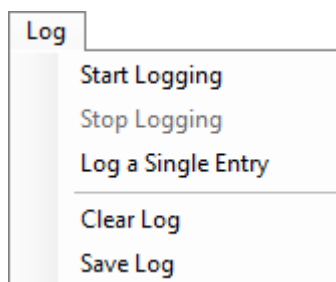
The **Lux Coefficients** menu is not implemented in the current software.

Click on the **Exit** command to close the main window and terminate the application. Any unsaved log data is cleared from memory. The application can also be close by clicking the red “X” in the upper right hand corner.

4.2.2 Log Menu

The Log menu controls the logging function and saves the log data to a file. Log data accumulates in memory until discarded or written to a data file.

Figure 5:
Log Menu



Click **Start Logging** to start the logging function. Each time the program polls the output information from the device, it creates a new log entry showing the raw data values, the values of various control registers, and the values entered by the user into the text fields near the bottom right corner of the window.

Click **Stop Logging** to stop the logging function. Once logging stops, the user may store the data in a file, or continue collecting additional data by clicking **Start Logging** again.

The **Log a Single Entry** command causes logging to start, collect one single entry, and immediately stop again. This function is not available when logging is already running.

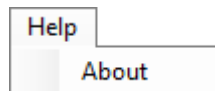
Click **Clear Log** to discard any previously collected data. If there is data in memory, which has not been saved to disk, this function displays a prompt asking to verify it is OK to discard the data. If the log is active when this function executes, the log continues running after the existing data is discarded.

Click **Save Log** to save the collected log data to a csv file. This stops the logging function, if it is active, and displays a file dialog box to specify where to store the logged data. The Log Status and Control Information section below describes the default file name, but you may change the file name if desired.

4.2.3 Help Menu

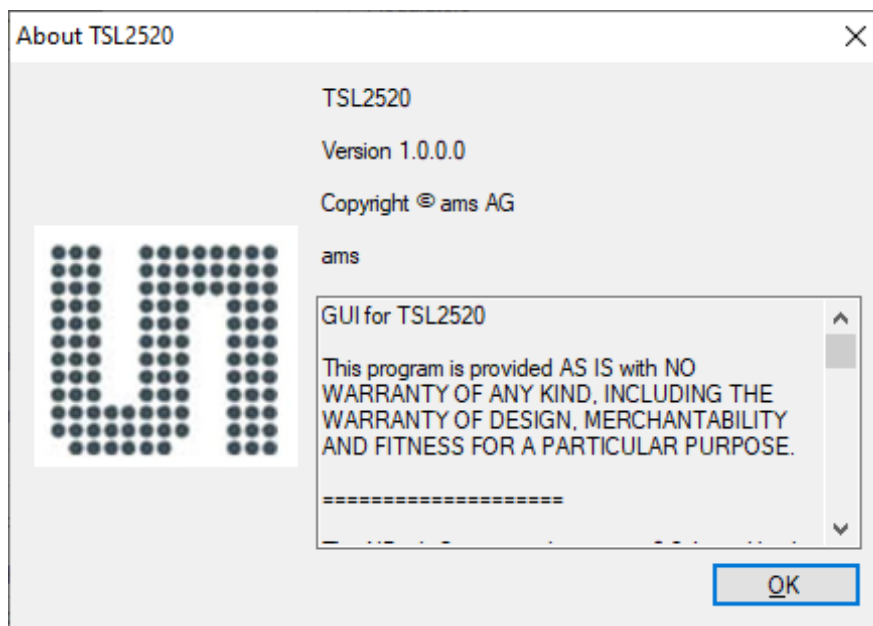
The Help menu contains a single function: About.

Figure 6:
Help Menu



The **About** function displays a dialog box (Figure 7) showing the version and copyright information for the application and library. Click the **OK** button to close this window and continue.

Figure 7:
About Window



4.3 System Level Controls

Immediately below the top menu bar there are checkboxes used to control the system level functions of the TSL2520 device.

The **Power On** checkbox controls the PON function of the TSL2520. When this box is checked, the power is on and the device is running measurements according the settings in the Configuration tab. At this time, the Configuration tab is disabled to prevent users to change the settings while the measurement is on going. When this box is unchecked, the power is off and the device does not operate. The Configuration tab is enabled and you can change the controls to setup the parameters for next running.

The **ALS Enable** checkbox controls the AEN function of the TSL2520. When this box is checked, the ALS detection is enabled.

4.4 Auto Polling

The application automatically polls the TSL2520 raw data if enabled. The **Poll Interval** at the right upper corner of the form displays the actually time between reads of the device. The control “**Poll Interval**” in the middle bottom of the form let the user set the desired polling interval.

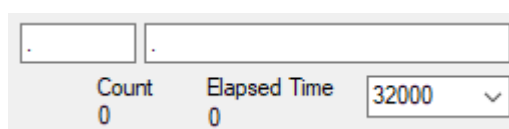
4.5 Device ID Information

The lower left corner of the window displays the ID number of the EVM Controller board and identifies the device being used.

4.6 Log Status and Control Information

The lower right corner of the window contains status information and controls for the logging function:

Figure 8:
Logging Status



The screenshot shows a software interface for logging status. At the top, there are two empty text boxes. Below them, on the left, is the label 'Count' with the value '0' displayed underneath. To the right of 'Count' is the label 'Elapsed Time' with the value '0' displayed underneath. Further to the right is a pull-down menu currently showing the value '32000'.

This section contains text boxes that are stored in the log file data and used to build the file name for the log file. If the data in these fields are changed, the new values are stored with any new data logged. The default file name is based on these values at the time the log file is written. If nothing is entered in these boxes they default to a period (“.”).

Sample default file name:

TSL2520_1-2-3_Log_HH_MM_SS.csv

■ From Application

■ From User Input

The **Count** value displayed is a count of the number of samples currently in the log buffer.

The **Elapsed Time** value indicates the elapsed time since data logging started.

The numeric box in the bottom right-hand corner sets a limit to the size of the collected dataset. You may select a value from the pull-down list, or enter a value manually. When the number of entries in the log reaches this value, the program will automatically stop logging and display a file dialog box to specify where to store the logged data. You may change the file name if desired. The maximum value that may be entered in this field is 32000.

4.7 “Configuration” Tab

The main portion of the screen contains a tab labeled Configuration.

Figure 9 :
Configuration Tab

The screenshot shows the 'Configuration' tab with the 'ALS' sub-tab selected. The interface includes several control groups: 'SAMPLE_TIME' (179, 250 us/4000 Hz), 'ALS' (ALS_NR_SAMPLES: 39, 40 samples; ALS Integration Time: 10 ms), 'Modulators' (Gain: Clear 0: 16x, IR 1: 1024x; AGC: Saturation, Prediction, Residuals; AGC_NR_SAMPLES: 19, 20 samples; AGC Integration Time: 5 ms), 'Sequencer' (MOD_TRIGGER_TIMING: 0 off; WTIME: 0, 0.00 ms), and 'CALIB' (CALIB_NTH_ITERATION: 1; Autozero at nth iteration: checked; OSC_CALIB: 0 disable; at VSYNC Frequency: 60 Hz). At the bottom, it shows 'EVM ID: AMBV440G', 'TSL25203Ax39, ID: None', 'Polling Interval: 250 ms', 'Count: 0', 'Elapsed Time: 32000', and a 'Measurement Stopped' indicator.

4.7.1 Configuration Controls

The **SAMPLE TIME** control sets the measurement time of the step for ALS measurements.

The **ALS** group box contains controls relating the flicker detection:

- **ALS_NR_SAMPLES** control defines the number of samples for one ALS measurement.
- **ALS Integration Time** control displays the integration time for one ALS measurement.

The **Calibration** group box contains the following controls:

- **CALIB_NTH_ITERATION** control sets the repeat rate of calibration execution in measurement sequencer rounds. The values are from 0 to 255.
- **Autozero at nth iteration** check box enables auto zero calibration during nth iteration calibration if checked.
- **OSC_CALIB** control defines calibration mode. The available options are “0 disabled”, “1 after pon”, and “2 always on”.
- **At VSYNC Frequency** sets VSYNC frequency. The available values are 60HZ, 90HZ and 120HZ.

The **Modulators** group box contains controls to setup all gains:

- **Gain Clear 0** dropdown combo box sets the gain for channel 0 (clear detection). The choices are 1/2x, 1x, 2x, 4x, 8x, 16x, 32x, 64x, 128x, 256x, 512x, 1024x, 2048x, and 4096x.
- **Gain IR 1** dropdown combo box sets the gain for channel 1 (IR detection). The choices are 1/2x, 1x, 2x, 4x, 8x, 16x, 32x, 64x, 128x, 256x, 512x, 1024x, 2048x, and 4096.
- **AGC** group box has two check boxes. One is check box **Prediction** for enabling the predict AGC function for all steps of the sequence if checked. Another one **Saturation** check box enables analog saturation AGC if checked.
- **Residual** check box enables a residual measurement on all modulators if checked.
- **AGC_NR_SAMPLES** defines the number of samples for every AGC measurement. The values are from 0 to 2047.
- **AGC Integration Time** displays the AGC integration time.

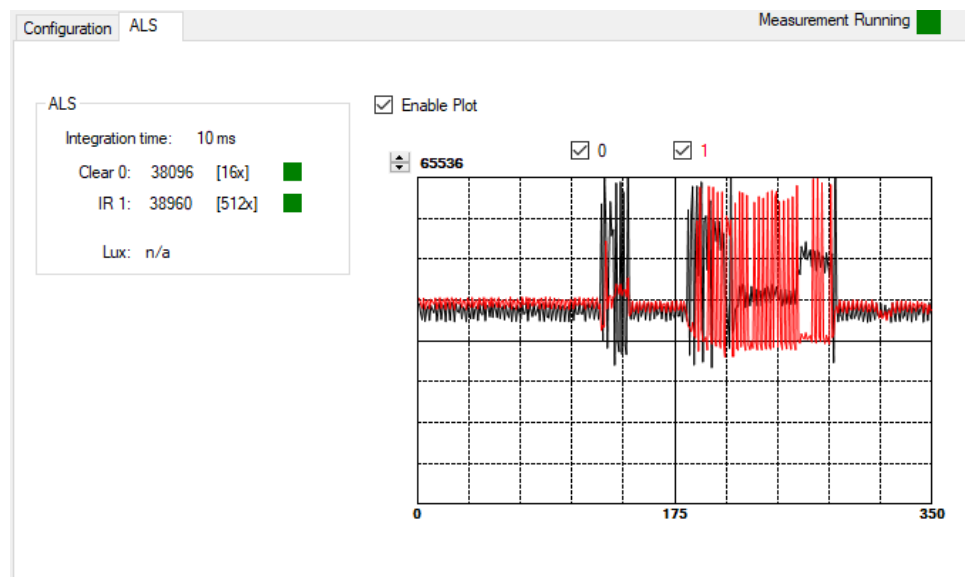
The **Sequencer** group box contains controls relating the wait function:

- **MOD_TRIGGER_TIMMING** defines the repeat rate of modulator/sequencer measurements. The available selections are “0 off”, “1 normal = 2.84 ms”, “2 long = 45.51 ms”, “3 fast = 88.89 us”, “4 fastlong = 1.42 ms”, “5 vsync”, “6 reserved0” and “7 reserved1”.
- **WTIME** specifies the time to wait between measurement steps. The values are from 0 to 255.

4.8 “ALS” Tab

The main portion of the screen contains a tab labeled ALS. It displays measurement data.

Figure 10 :
ALS Tab



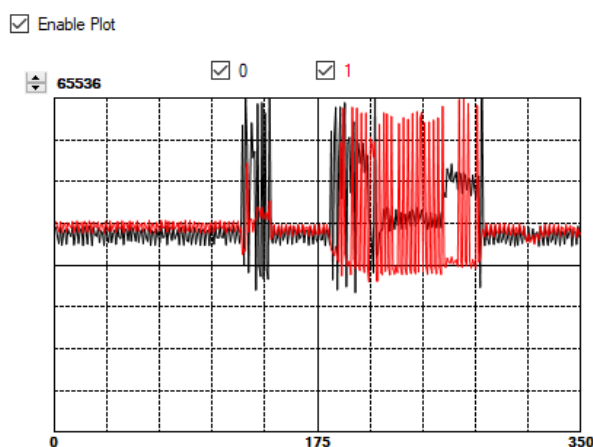
4.8.1 ALS Group Box

- The ALS **Integration Time**.
- **Clear 0** data counts.
- **IR 1** data counts.
- **Clear 0** gain value.
- **IR 1** gain value.
- **Clear 0 Saturation status**: Green color means no saturation happened. Red otherwise.
- **IR 1 Saturation status**: Green color means no saturation happened. Red otherwise.
- **Lux**: Lux calculation is not implement in the GUI.

4.8.2 ALS Data Plot

The remaining portion of the ALS tab is used to display a running plot of the collected ALS values. The last 350 values are collected and plotted on the graph. As additional values are added, the old values will be deleted from the left side of the graph. To start the plotting function, check the **Enable Plot** checkbox and select the **0**, **1** checkboxes.

Figure 11:
ALS Data Plot



The scale of the Y-axis of the plot can be adjusted by clicking on the small up and down arrows at the top left corner of the plot. The scale can be set to any power of 2 from 64 through 65536.

Click the **Clear Plot** button to discard the current data and continue plotting the new data. Note if the Clear Plot button is clicked while the plot is disabled, the data is discarded, but the actual plot will not be updated until the plot function is re-enabled.

5 Resources

For additional information regarding the TSL2520, please refer to the datasheet. For information regarding the installation of the TSL2520 EVM host application software please refer to the TSL2520 EVM Quick Start Guide.

Designer's Notebooks dealing with various aspects of optical measurement and optical measurement applications are available. All content is available on the **ams** website www.ams.com.



For further information, please refer to the following documents:

- TSL2520 Datasheet
 - TSL2520 EVM Quick Start Guide (QSG)
 - TSL2520 EVM User's Guide (this document)
 - TSL2520 EVM Schematic Layout
-

6 Revision Information

Changes from previous version to current revision v1-00	Page
Initial Release	

- Page and figure numbers for the previous version may differ from page and figure numbers in the current revision.
- Correction of typographical errors is not explicitly mentioned.

7 Legal Information

Copyrights & Disclaimer

Copyright ams AG, Tobelbader Strasse 30, 8141 Premstaetten, Austria-Europe. Trademarks Registered. All rights reserved. The material herein may not be reproduced, adapted, merged, translated, stored, or used without the prior written consent of the copyright owner.

Demo Kits, Evaluation Kits and Reference Designs are provided to recipient on an "as is" basis for demonstration and evaluation purposes only and are not considered to be finished end-products intended and fit for general consumer use, commercial applications and applications with special requirements such as but not limited to medical equipment or automotive applications. Demo Kits, Evaluation Kits and Reference Designs have not been tested for compliance with electromagnetic compatibility (EMC) standards and directives, unless otherwise specified. Demo Kits, Evaluation Kits and Reference Designs shall be used by qualified personnel only.

ams AG reserves the right to change functionality and price of Demo Kits, Evaluation Kits and Reference Designs at any time and without notice.

Any express or implied warranties, including, but not limited to the implied warranties of merchantability and fitness for a particular purpose are disclaimed. Any claims and demands and any direct, indirect, incidental, special, exemplary or consequential damages arising from the inadequacy of the provided Demo Kits, Evaluation Kits and Reference Designs or incurred losses of any kind (e.g. loss of use, data or profits or business interruption however caused) as a consequence of their use are excluded.

ams AG shall not be liable to recipient or any third party for any damages, including but not limited to personal injury, property damage, loss of profits, loss of use, interruption of business or indirect, special, incidental or consequential damages, of any kind, in connection with or arising out of the furnishing, performance or use of the technical data herein. No obligation or liability to recipient or any third party shall arise or flow out of ams AG rendering of technical or other services.

RoHS Compliant & ams Green Statement

RoHS Compliant: The term RoHS compliant means that ams AG products fully comply with current RoHS directives. Our semiconductor products do not contain any chemicals for all 6 substance categories plus additional 4 substance categories (per amendment EU 2015/863), including the requirement that lead not exceed 0.1% by weight in homogeneous materials. Where designed to be soldered at high temperatures, RoHS compliant products are suitable for use in specified lead-free processes.

ams Green (RoHS compliant and no Sb/Br/Cl): ams Green defines that in addition to RoHS compliance, our products are free of Bromine (Br) and Antimony (Sb) based flame retardants (Br or Sb do not exceed 0.1% by weight in homogeneous material) and do not contain Chlorine (Cl) not exceed 0.1% by weight in homogeneous material).

Important Information: The information provided in this statement represents ams AG knowledge and belief as of the date that it is provided. ams AG bases its knowledge and belief on information provided by third parties, and makes no representation or warranty as to the accuracy of such information. Efforts are underway to better integrate information from third parties. ams AG has taken and continues to take reasonable steps to provide representative and accurate information but may not have conducted destructive testing or chemical analysis on incoming materials and chemicals. ams AG and ams AG suppliers consider certain information to be proprietary, and thus CAS numbers and other limited information may not be available for release.

Headquarters

ams AG
Tobelbader Strasse 30
8141 Premstaetten
Austria, Europe
Tel: +43 (0) 3136 500 0

Please visit our website at www.ams.com

Buy our products or get free samples online at www.ams.com/Products

Technical Support is available at www.ams.com/Technical-Support

Provide feedback about this document at www.ams.com/Document-Feedback

For sales offices, distributors and representatives go to www.ams.com/Contact

For further information and requests, e-mail us at ams_sales@ams.com

Mouser Electronics

Authorized Distributor

Click to View Pricing, Inventory, Delivery & Lifecycle Information:

[ams OSRAM:](#)

[TSL2520-EVM](#)