

SERIES	PINS PER ROW	WIRE GAUGE	PLATING OPTION	ASSEMBLY LENGTH	END OPTION	K	LATCH OPTION																										
MMSD = Double Row PVC Cable	-02, -03, -04, -05, -06, -08, -10, -12, -15, -16, -20, -25 (Standard sizes)	-20 -20C = Color Coded Cable (MMSD & MMSS only)	-F = Gold flash on contact, Tin on tail	-"XX.XX" = Assembly Length in Inches (82.55 mm) 03.25" min.	-S = Single Ended	-K = Keyed Polarization	(Metal latches for more rugged environments; -02, -05 & -10 positions only)																										
MMSDT = Double Row Blue *Teflon™ Fluoropolymer Cable (20, 24, 28, 30 AWG only)			-L = 10 μ" (0.25 μm) Gold on contact, Tin on tail		-D = Double Ended (Latch Required)		-M = Single Ended, Metal Latches (Leave blank for plastic)																										
MMSS = Single Row PVC Cable		-22, -24					Double Ended (-D) Crossed requires MMSD/MMSDT																										
MMSST = Single Row Blue *Teflon™ Fluoropolymer Cable (20, 24, 28, 30 AWG)		-24C = Color Coded Cable (MMSD & MMS only)		<table><tr><th colspan="2">-20C, -24C, -28C CABLE COLOR CODING</th></tr><tr><th>PIN</th><th>COLOR</th></tr><tr><td>1</td><td>BROWN</td></tr><tr><td>2</td><td>RED</td></tr><tr><td>3</td><td>ORANGE</td></tr><tr><td>4</td><td>YELLOW</td></tr><tr><td>5</td><td>GREEN</td></tr><tr><td>6</td><td>BLUE</td></tr><tr><td>7</td><td>VIOLET</td></tr><tr><td>8</td><td>GRAY</td></tr><tr><td>9</td><td>WHITE</td></tr><tr><td>10</td><td>BLACK</td></tr><tr><td>ETC</td><td>REPEAT</td></tr></table>	-20C, -24C, -28C CABLE COLOR CODING		PIN	COLOR	1	BROWN	2	RED	3	ORANGE	4	YELLOW	5	GREEN	6	BLUE	7	VIOLET	8	GRAY	9	WHITE	10	BLACK	ETC	REPEAT			
-20C, -24C, -28C CABLE COLOR CODING																																	
PIN	COLOR																																
1	BROWN																																
2	RED																																
3	ORANGE																																
4	YELLOW																																
5	GREEN																																
6	BLUE																																
7	VIOLET																																
8	GRAY																																
9	WHITE																																
10	BLACK																																
ETC	REPEAT																																
MMSD, MMSDT, MMSS, MMSST Board Mates: IPL1 (Does not mate with IPT1) Cable Mates: MMTD(T), MMTS(T)		-26, -28					-LUS = Plastic Latch up, straight																										
		-28C = Color Coded Cable (MMSD & MMSS only)					-LDS = Plastic Latch down, straight																										
		-30					-LUX = Plastic Latch up, crossed																										
							-LDX = Plastic Latch down, crossed																										
							-MUS = Metal Latch up, straight																										
							-MDS = Metal Latch down, straight																										
							-MUX = Metal Latch up, crossed																										
							-MDX = Metal Latch down, crossed																										

Assembly Length
± (3.18)
.125

No. of positions
x (2.54) .100
+ (1.40) .055

(8.97)
.353

SPECIFICATIONS

Insulator Material:
Nylon 66

Contact Material:
Phosphor Bronze

Plating: Au or Sn over
50 μ" (1.27 μm) Ni

Operating Temp Range:
-10 °C to +80 °C (PVC)
-40 °C to +125 °C (*Teflon™)

Current Rating:
4.8 A (2 pins powered)

Voltage Rating:
275 VAC/389 VDC

*Teflon™ is a trademark of The Chemours Company FC, LLC used under license by Samtec.

Teflon™ Fluoropolymer cable is intended for crimp only. Contact Samtec for solderable cable applications.

SPECIFICATIONS

Insulator Material:
Nylon 66

Contact Material:
Phosphor Bronze

Plating: Au or Sn over
50 μ" (1.27 μm) Ni

Operating Temp Range:
-10 °C to +80 °C (PVC)

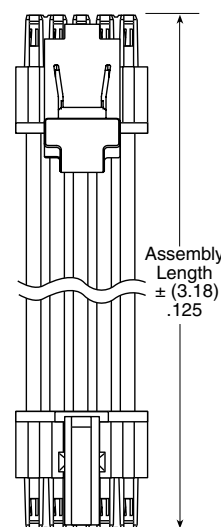
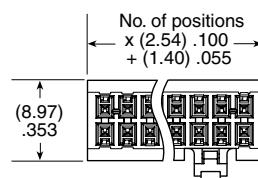
-40 °C to +125 °C (*Teflon™)

Current Rating:
4.8 A (2 pins powered)

Voltage Rating:
275 VAC/389 VDC

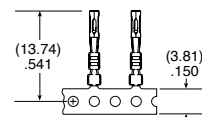
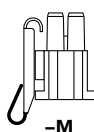
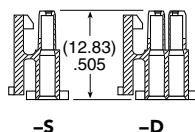
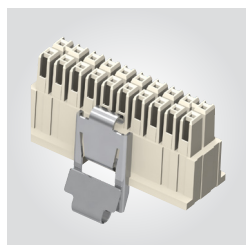
*Teflon™ is a trademark of The
Chemours Company FC, LLC
used under license by Samtec.

Teflon™ Fluoropolymer cable
is intended for crimp only.
Contact Samtec for solderable
cable applications.



View complete specifications at: samtec.com?MMSD, samtec.com?MMSDT, samtec.com?MMSS & samtec.com?MMSST

IPD1	POSITIONS PER ROW	ROW OPTION	K	LATCH OPTION	SERIES	WIRE GAUGE	01	PLATING OPTION
	-02, -03, -04, -05, -06, -08, -10, -12, -15, -16, -20, -25 (Standard sizes)	-S = Single Row	-K = Keyed Polarization	-M = Metal Latch (Metal for more rugged environments) (-02, -05 & -10 positions only) (Leave blank for plastic latch)	CC79L = Contact, Loose	-2630 = 26 to 30 AWG		-F = Gold flash on contact, Tin on tail
		-D = Double Row			CC79R = Contact, Full Reel (12,000 Parts per Reel)	-2024 = 20 to 24 AWG		-L = 10 μ" (0.25 μm) Gold on contact, Tin on tail



TOOLING

Note:
Some lengths,
styles and
options are
non-standard,
non-returnable.

Hand Tool: CAT-HT-179-2030-13 (20-30 AWG)

Mini Applicator: CAT-MC-179-2024-XX-01 (20-24 AWG)

Mini Applicator: CAT-MC-179-2630 XX-01 (26-30 AWG)

Extraction Tool: CAT-EX-179-01

View complete specifications at: samtec.com?IPD1, samtec.com?CC79L & samtec.com?CC79R

Mouser Electronics

Authorized Distributor

Click to View Pricing, Inventory, Delivery & Lifecycle Information:

[Samtec:](#)

[IPD1-21-D-P](#)