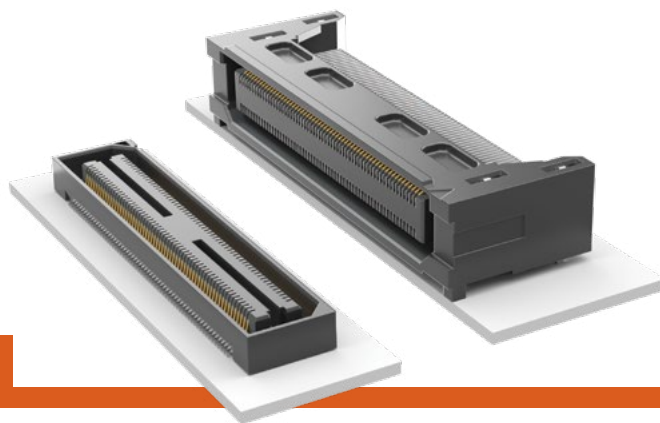


# BASIC BLADE & BEAM SOCKET

(0.50 mm) .0197" PITCH • BSH SERIES



**BSH**  
Mates:  
BTH

## SPECIFICATIONS

**Insulator Material:**  
Black LCP  
**Contact Material:**  
Phosphor Bronze  
**Plating:**  
Au or Sn over  
50  $\mu$ " (1.27  $\mu$ m) Ni  
**Current Rating:**  
2 A per pin  
(2 pins powered)  
**Operating Temp Range:**  
-55 °C to +125 °C  
**Voltage Rating:**  
175 VAC  
**Max Cycles:**  
100

## PROCESSING

**Lead-Free Solderable:**  
Yes  
**SMT Lead Coplanarity:**  
(0.10 mm) .004" max (030-090)  
(0.15 mm) .006" max (120-150)\*  
\*(.004" stencil solution  
may be available; contact  
ipg@samtec.com)  
**Board Stacking:**  
For applications requiring more  
than two connectors per board  
or 90 positions or higher,  
contact ipg@samtec.com

## ALSO AVAILABLE

MOQ Required

30  $\mu$ " (0.76  $\mu$ m) Gold  
Edge Mount Capability  
8 mm, 11 mm, 16 mm, 19 mm  
and 22 mm Stack Height  
(Caution: Some automatic  
placement/inspection  
machines may have  
component height  
restrictions. Please consult  
machinery specifications.)  
(11 mm, 16 mm, 19 mm  
and 22 mm not available  
with 50 positions)



**Note:**  
Some lengths, styles and  
options are non-standard,  
non-returnable.

BSH	NO. OF POSITIONS PER ROW	01	PLATING OPTION	D	A	OTHER OPTION
-----	--------------------------	----	----------------	---	---	--------------

-030, -050, -060,  
-090, -120, -150

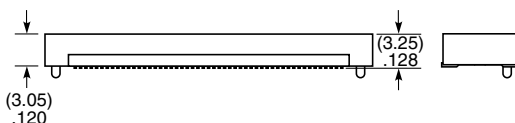
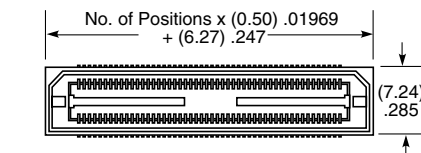
-F  
= Gold Flash  
on contact,  
Matte Tin on tail

-L  
= 10  $\mu$ " (0.25  $\mu$ m)  
Gold on contact,  
Matte Tin on tail

-C\*  
= Electro-Polished  
Selective  
50  $\mu$ " (1.27  $\mu$ m) min  
Au over 150  $\mu$ " (3.81  $\mu$ m)  
Ni on Signal Pins in  
contact area,  
Matte Tin over  
50  $\mu$ " (1.27  $\mu$ m) min  
Ni on all solder tails  
(\*C Plating passes  
10 year MFG testing)

-TR  
= Tape & Reel  
(120 positions  
maximum)

-FR  
= Full Reel  
Tape & Reel  
(must order  
maximum  
quantity  
per reel;  
contact  
Samtec for  
quantity breaks)  
(120 positions  
maximum)



## MATED HEIGHT

LEAD STYLE	MATED HEIGHT*
-01	(5.00 mm) .1971"

\*Processing conditions  
will affect mated height.

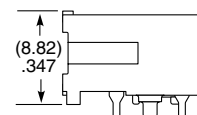
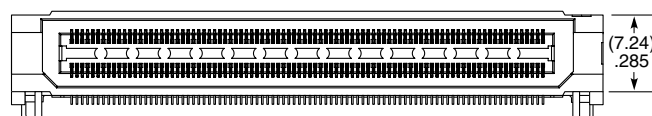
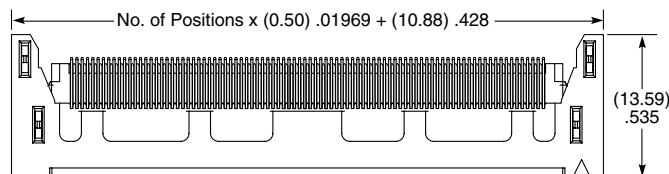
BSH	NO. OF POSITIONS PER ROW	01	PLATING OPTION	D	RA	WT	OTHER OPTION
-----	--------------------------	----	----------------	---	----	----	--------------

-030, -060, -090

-F  
= Gold Flash  
on contact,  
Matte Tin on tail

-L  
= 10  $\mu$ " (0.25  $\mu$ m)  
Gold on contact,  
Matte Tin on tail

-GP  
= Guide  
Post



# Mouser Electronics

Authorized Distributor

Click to View Pricing, Inventory, Delivery & Lifecycle Information:

[Samtec:](#)

[BSH-090-01-F-D-A](#) [BSH-090-01-L-D-A-TR](#) [BSH-060-01-F-D-A-TR](#) [BSH-030-01-L-D-A](#) [BSH-120-01-F-D-A](#) [BSH-150-01-L-D-A](#) [BSH-050-01-F-D-A](#) [BSH-050-01-F-D-A-TR](#) [BSH-050-01-L-D-A](#) [BSH-060-01-F-D-A](#) [BSH-060-01-L-D-A](#) [BSH-060-01-L-D-A-TR](#) [BSH-030-01-L-D-A-TR](#) [BSH-050-01-L-D-A-TR](#) [BSH-090-01-L-D-A](#) [BSH-030-01-F-D-A](#) [BSH-030-01-L-D-TR](#) [BSH-030-01-F-D-A-TR](#) [BSH-030-01-H-D-A-TR](#) [BSH-060-01-F-D-RA-WT](#) [BSH-030-01-H-D-A](#) [BSH-090-01-F-D-A-TR](#) [BSH-030-01-L-D](#) [BSH-050-01-H-D-A](#) [BSH-180-01-L-D](#) [BSH-150-01-L-D](#) [BSH-090-01-F-D](#) [BSH-090-01-L-D](#) [BSH-120-01-F-D](#) [BSH-050-01-H-D-A-TR](#) [BSH-060-01-L-D](#) [BSH-060-01-F-D](#) [BSH-120-01-L-D](#) [BSH-030-01-F-D](#) [BSH-050-01-H-D-LC-TR](#) [BSH-120-01-H-D-A](#) [BSH-120-01-L-D-EM2](#) [BSH-050-01-L-D](#) [BSH-150-01-F-D-LC](#) [BSH-150-01-H-D-A](#) [BSH-030-01-F-D-TR](#) [BSH-060-01-F-D-TR](#) [BSH-060-01-H-D](#) [BSH-060-01-H-D-LC](#) [BSH-090-01-H-D](#) [BSH-030-01-F-D-EM2](#) [BSH-060-01-F-D-LC-TR](#) [BSH-090-01-H-D-A-TR](#) [BSH-090-01-L-D-LC-TR](#) [BSH-050-01-L-D-LC](#) [BSH-090-01-L-D-LC](#) [BSH-120-01-F-D-A-TR](#) [BSH-150-01-L-D-LC](#) [BSH-060-01-L-D-EM2](#) [BSH-060-01-L-D-LC-TR](#) [BSH-060-01-H-D-A](#) [BSH-090-01-L-D-EM2](#) [BSH-150-01-F-D](#) [BSH-150-01-L-D-EM2](#) [BSH-030-01-L-D-LC-TR](#) [BSH-090-01-H-D-A](#) [BSH-060-01-H-D-A-TR](#) [BSH-090-01-H-D-LC](#) [BSH-030-01-H-D](#) [BSH-030-01-H-D-TR](#) [BSH-030-01-L-D-LC](#) [BSH-060-01-H-D-EM2](#) [BSH-120-01-F-D-EM2](#) [BSH-030-01-F-D-LC](#) [BSH-060-01-F-D-EM2](#) [BSH-060-01-L-D-LC](#) [BSH-060-01-L-D-TR](#) [BSH-050-01-L-D-LC-TR](#) [BSH-090-01-F-D-EM2](#) [BSH-090-01-L-D-TR](#) [BSH-090-01-H-D-EM2](#) [BSH-060-01-C-D-A](#) [BSH-150-01-F-D-EM2](#) [BSH-030-01-L-D-EM2](#) [BSH-050-01-C-D-A](#) [BSH-120-01-H-D](#) [BSH-120-01-H-D-A-TR](#) [BSH-120-01-H-D-LC](#) [BSH-060-01-C-D-A-TR](#) [BSH-030-01-F-D-LC-TR](#) [BSH-050-01-F-D](#) [BSH-050-01-L-D-TR](#) [BSH-090-01-C-D-A](#) [BSH-090-01-F-D-RA-WT](#) [BSH-090-01-L-D-RA-WT](#) [BSH-090-01-L-D-RA-WT-GP](#) [BSH-060-01-L-D-RA-WT-GP](#) [BSH-030-01-F-D-RA-WT](#) [BSH-030-01-L-D-RA-WT](#) [BSH-030-01-L-D-RA-WT-GP](#) [BSH-030-01-C-D-A](#) [BSH-120-01-H-D-LC-TR](#) [BSH-060-01-L-D-RA-WT](#) [BSH-030-01-C-D-A-TR](#) [BSH-120-01-L-D-LC](#)