

The BDCC series is the special design to enhance the performance of PFM and PWM applications. It provides lower  $R_{ac}$  value at light load and lower  $R_{dc}$  value at heavy load to improve efficiency performance. Furthermore, it provides excellent saturation current to reduce the ripple current and enhance efficiency.

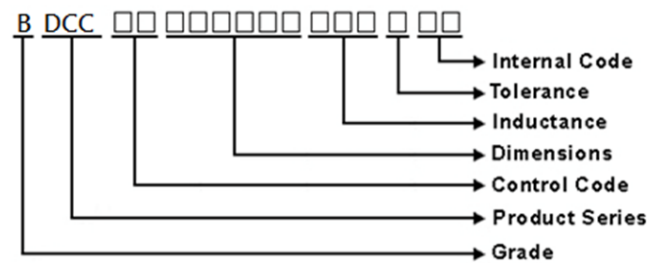
## Features

- Chip Size: 2012
- Low profile: 0.8mm
- Inductance: 0.24uH ~0.47uH
- Low  $R_{dc}$  for better power efficiency management
- High saturation current
- L Type Termination

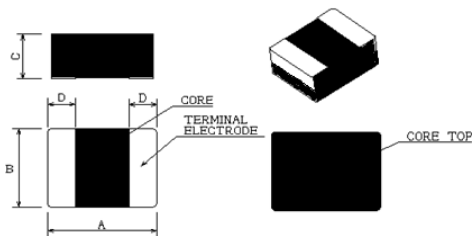
## Applications

- DC-DC buck converter for power management
- 5G, Cell phone

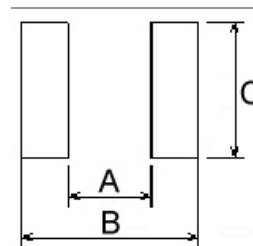
## Product Identification



## Chip Shape and Dimensions



## Recommended Pad Pattern



Dimensions in mm

TYPE	A	B	C	D
BDCC00201208	2.0±0.2	1.25±0.2	0.8 Max.	0.5 Typ.

Dimensions in mm

TYPE	A	B	C
BDCC00201208	0.8	2.4	1.45

## Electrical Characteristics

Part Number	Inductance ( $\mu$ H)	Tolerance ( $\pm$ %)	Test Frequency (MHz)	RDC (m $\Omega$ ) Max(Typ)	Isat (A) Max(Typ)	Irms (A) Max(Typ)
BDCC00201208R24MWA	0.24	20	2	22(18)	5.5(6.0)	4.2(4.3)
BDCC00201208R33MWA	0.33	20	2	24(20)	4.8(5.8)	4.0(4.2)
BDCC00201208R47MWA	0.47	20	2	29(25)	4.3(4.8)	3.7(3.9)

**Note:** When ordering, please specify tolerance code. Tolerance: M= $\pm$ 20%

- Operating temperature range: -40°C~125°C (Including self-temperature rise)
- Isat for Inductance drop 30% from its initial inductance value without applying current
- Irms for a 40°C temperature rise from 25°C ambient with applying current
- Rated current: Isat or Irms, whichever is smaller
- Absolute maximum voltage: 20VDC

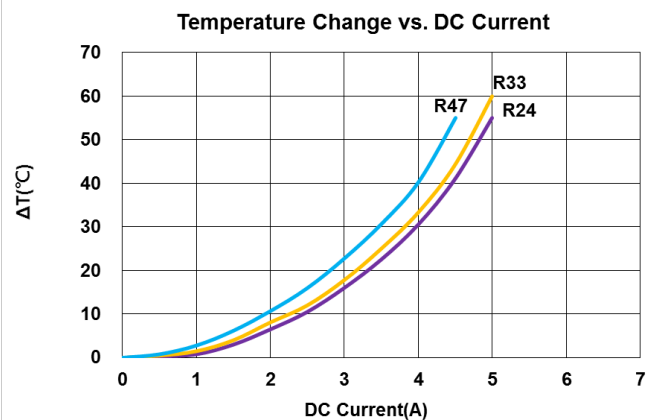
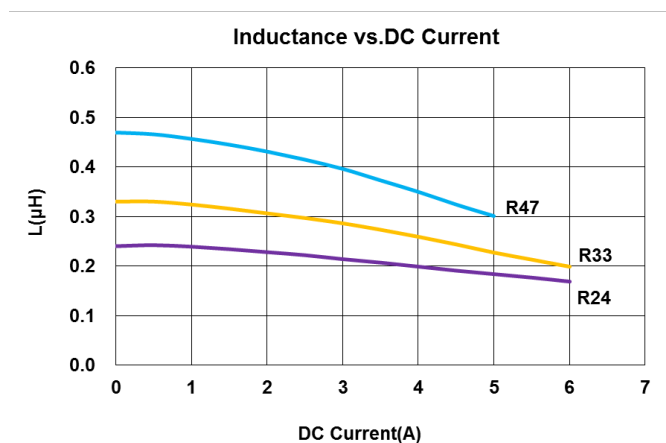
## Test Instruments :

L: WK 6500B/HP4285A (or equivalent), 2MHz 1V

RDC: Chen Hwa 502BC/HP4338B (or equivalent)

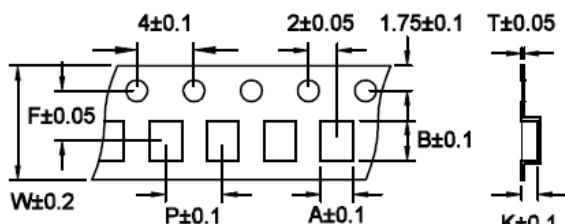
Isat: Agilent E4980A+HP42841A (or equivalent)

Irms: Agilent 6641 system DC power supply (or equivalent)



## Packaging Specifications

Tape Dimensions

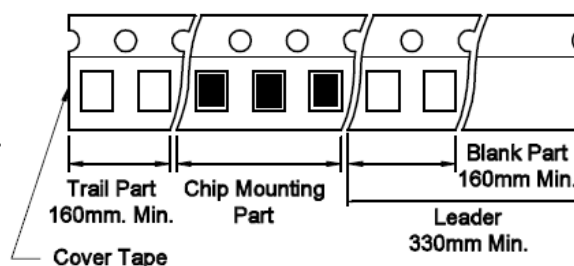


Tape Material

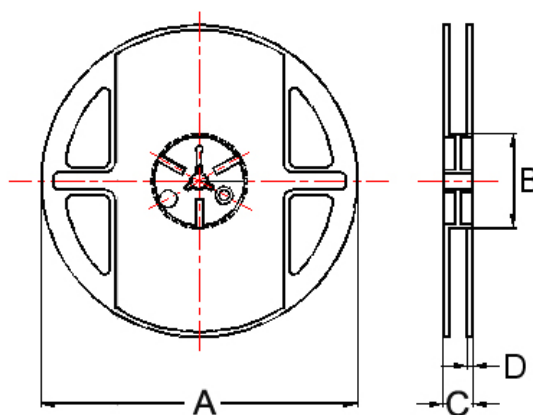
### Tape Material

Carrier Tape: Polycarbonate

Cover Tape: Polyethylene



Reel Dimensions



Dimensions in mm

TYPE	Tape Dimensions							Reel Dimensions				Quantity PCS / REEL
	A	B	T	W	P	F	K	A	B	C	D	
BDCC00201208	1.48	2.27	0.22	8	4	3.5	1.10	178	60	12	1.5	3000

## For More Information:

Americas - [prodinfo\\_power\\_americas@yageo.com](mailto:prodinfo_power_americas@yageo.com) | Europe - [prodinfo\\_power\\_emea@yageo.com](mailto:prodinfo_power_emea@yageo.com) | Asia - [prodinfo\\_power\\_asia@yageo.com](mailto:prodinfo_power_asia@yageo.com)

Performance warranty of products offered on this data sheet is limited to the parameters specified. Data is subject to change without notice. Other brand and product names mentioned herein may be trademarks or registered trademarks of their respective owners. © Copyright, 2022. Pulse Electronics, Inc. All rights reserved.

# Mouser Electronics

Authorized Distributor

Click to View Pricing, Inventory, Delivery & Lifecycle Information:

Pulse:

[BDCC00201208R47MWA](#)