

# WINTOTAL SOFTWARE

## Label/Marker Design Package

### Technical Datasheet

TTDS-001 Revision 14 - July 2019

WinTotal is a label/marker design package that makes wire marker printing simple in an industrial environment. Running in the familiar Windows environment, WinTotal v7 has over 2500 standard TE Connectivity (TE) Identification products pre-installed. This makes the creation and printing of Identification sleeves, cable markers & labels a quick and simple task. Using the advanced editor, it is also possible to create complex layouts that relate to active data fields, giving a true What You See is What You Get (WYSIWYG) representation.

The WinTotal v7 dialogs have been simplified to enhance the user experience and improve productivity by enabling quicker database loading and product selection.

WinTotal features a highly graphical user interface. It is designed to improve efficiency, simplify operator training and minimize errors.

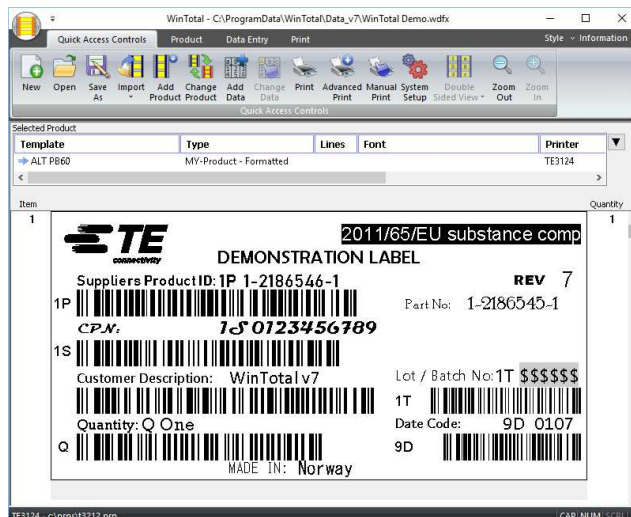
## Key Features

- Multi-lingual user interface
- Pre-loaded WYSIWYG templates
- Clipart gallery with commonly used symbols
- Counters - Increment/Decrement alpha and numeric fields
- Accepts and prints data in any language – Unicode data support
- Multiple Label Design Objects: Text, lines, boxes, circles and images
- Double sided marker printing with WYSIWYG display
- Live database view in fields
- Extensive Barcode and 2D barcode support, including DOD UID
- All standard image files and elements supported (PNG, JPG, BMP)
- True print preview
- Advanced label design elements and tools: Text boxes, rich text formatting, auto/variable font size, auto/variable label length for TMS Continuous Tubing
- Multiple Printers/Printing: Full MAPP (Multiple Application Port Printing). Able to drive multiple printers

## System Requirements

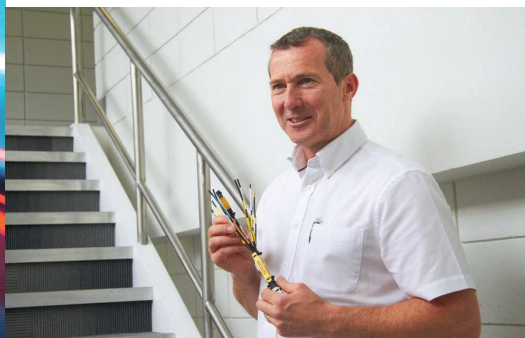
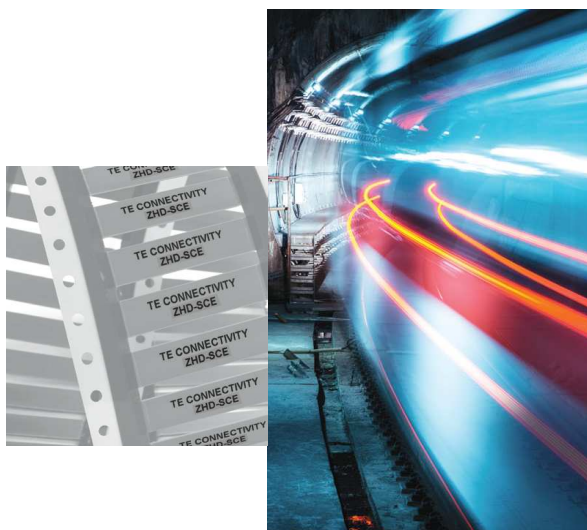
- Windows 10, (32bit or 64bit); Windows Server 2012
- IBM compatible PC - 1GHz or higher 32bit (x86) or 64bit (x64) processor

*WinTotal v7 will run in Windows OS 8.1, 8, 7 (32 or 64 bit) & Windows Server 2008 but TE cannot guarantee future compatibility.*

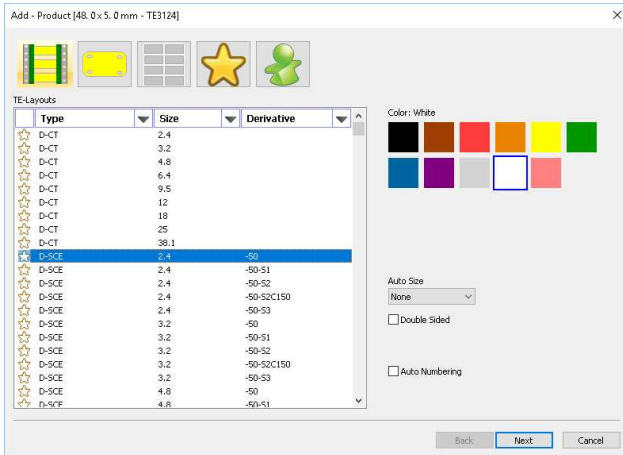


## Supported Languages

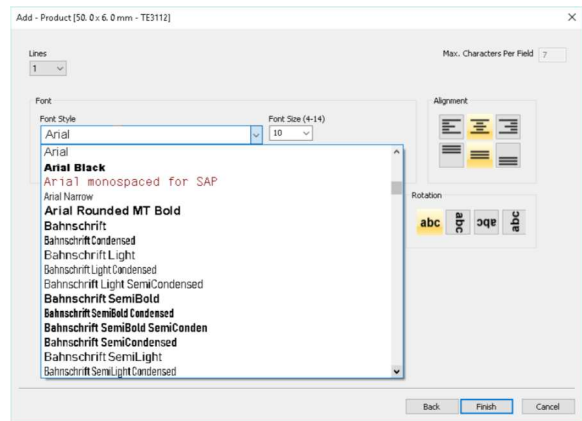
- Dutch
- English
- French
- German
- Italian
- Japanese
- Korean
- Norwegian
- Portuguese (Brazil)
- Russian
- Simplified Chinese
- Spanish
- Turkish



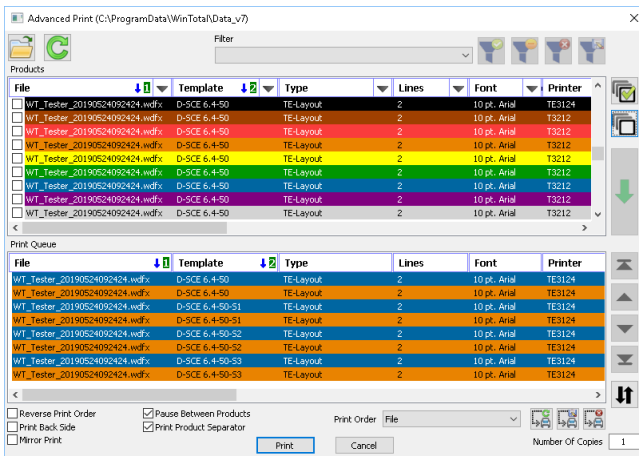
# WINTOTAL SOFTWARE Label/Marker Design Package



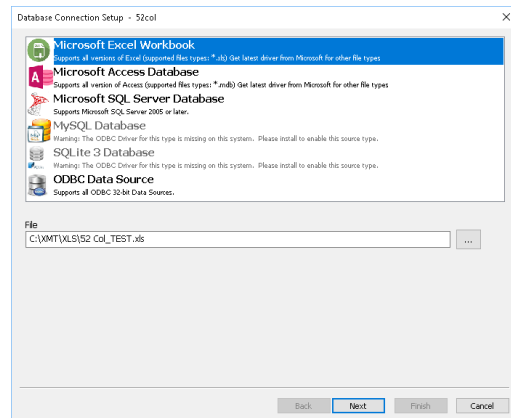
Add Product displays all supported products and is fully filterable. Users can select products and create favourite list.



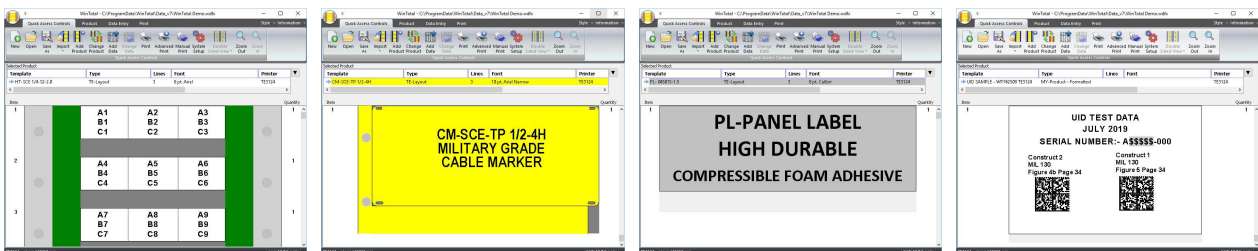
Any True Type font installed on the user's PC can be selected at Add Product.



Advanced print allows total control of product files. This enables the user to customise their filters to use all the available file attributes, for example: File Name, Product, Number of lines, Height, Width, Colour, etc.

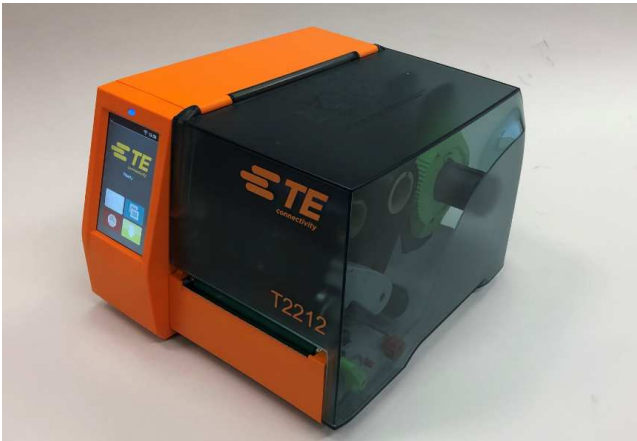


The database wizard simplifies the connection to spreadsheets and databases enabling the easy import of data into TE products.



## Ordering Information

Ordering Description			
WINTOTAL-7-DONGLE	1-2186545-1		
WINTOTAL-7-END-USER-LICENCE	1-2186546-1		



Printer Information

Print quality and print performance can only be guaranteed when specific TE printer and ribbons are used.

The current list of printers and ribbons can be found in TE document 411-121005 'Identification Printer Product Ribbon Matrix'. This document can be found in 'Access Our Tools':

<http://www.te.com/usa-en/utilities/access-product-tools-and-resources.html>

WinTotal is also available as a Printer/Software bundle. Order the latest TE printer and get the full version of WinTotal.

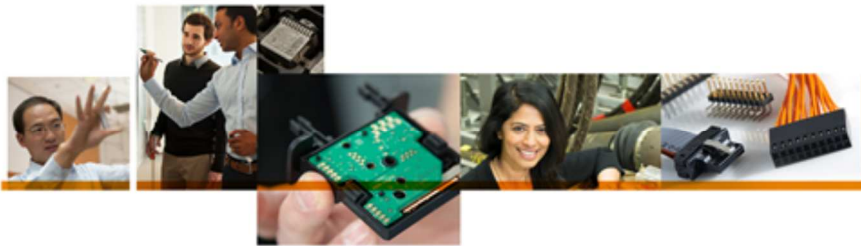
Ordering Description	
T3212-SWARE-PRINTER	1-2186501-1
T3224-SWARE-PRINTER	1-2186503-1
T2212-SWARE-PRINTER	1-2186528-1

It is the intent of TE to support WinTotal for the complete lifecycle of the version. The lifecycle begins when the product is released and ends when support for the host Operating System (as defined in the System Requirements) is ended by Microsoft. Up to this date TE will provide software updates to fix faults and update functionality. Beyond the end of support date TE will continue to provide verbal and e-mail advice to users but TE will no longer provide fixes or updates and the software registration site will be locked for requests beyond the allocated registration allowance.

WINTOTAL software is available to download for a 14 day evaluation period from the Identification Printer Software page:

<http://www.te.com/wintotal> or direct download: <http://www.te.com/wintotal-download>

Contact a TE representative for further information.



[www.te.com/wintotal](http://www.te.com/wintotal)

TE Connectivity, TE Connectivity (logo), Every Connection Counts and WinTotal are trademarks. All other logos, products and/or company names referred to herein might be trademarks of their respective owners.

The information given herein, including drawings, illustrations and schematics which are intended for illustration purposes only, is believed to be reliable. However, TE Connectivity makes no warranties as to its accuracy or completeness and disclaims any liability in connection with its use. TE Connectivity's obligations shall only be as set forth in TE Connectivity's Standard Terms and Conditions of Sale for this product and in no case will TE Connectivity be liable for any incidental, indirect or consequential damages arising out of the sale, resale, use or misuse of the product. Users of TE Connectivity products should make their own evaluation to determine the suitability of each such product for the specific application.

© 2019 TE Connectivity Ltd. family of companies All Rights Reserved.



# Mouser Electronics

Authorized Distributor

Click to View Pricing, Inventory, Delivery & Lifecycle Information:

[TE Connectivity:](#)

[1-2186545-1](#) [1-2186546-1](#)