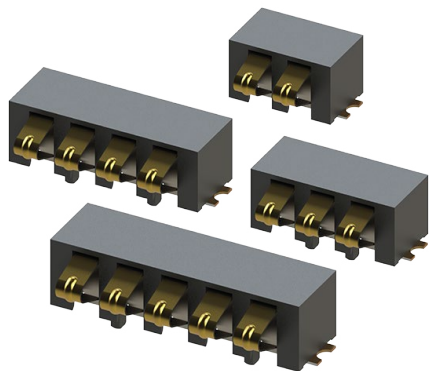


RIGHT ANGLE 2.5MM PITCH: 9155-500

General Information



KYOCERA AVX has expanded its range of battery connectors with the addition of a low-profile, 2.5-mm pitch, right-angle connector. Offered in 2 to 5 positions, this connector is rated at 3 amps. Its small, compact design minimizes its profile, yet it is functionally stable with a contact point at 2.20 mm above the PCB.

This stamped contact's unique design allows for a maximum insulator height of 4.0 mm, making it size-compatible with more expensive pogo pin-style battery connectors.

KYOCERA AVX's complete family of battery connectors offers all the same advantages: a beryllium copper base material for enhanced contact performance; a full 3-amp current rating; selective gold plating for 5,000 mating cycles; and high-temperature plastic for RoHS soldering.

APPLICATIONS

- Mobile Phones
- Digital Music Players
- Any Handheld Devices
- Product Specification: Refer to 201-01-114

FEATURES AND BENEFITS

- Reliable stamped contact with coined nose
- Full 1.5mm nose deflection for large operating range
- Two anchor tabs for mechanical stability
- 5000 cycle durability rating
- Minimized X, Y and Z package dimensions

ELECTRICAL

- Current Rating: 3 Amps / Contact
- Voltage Rating: 125 VAC (RMS) or DC equivalent

ENVIRONMENTAL

- Operating Temperature: -40°C to +125°C
- Storage Temperature: -40°C to +70°C

MECHANICAL

- Insulator Material: Glass-Filled Nylon 46; UL94 HB
- Contact Material: Beryllium Copper
- Plating: Gold over Nickel
- Durability: 5000 Cycles

HOW TO ORDER

00

Prefix

9155

Series

00X

No. of Ways

2 = 002
3 = 003
4 = 004
5 = 005

541

Right Angle
Battery Connector
541 = Right Angle 2.5mm
Battery Connector

00X

Plating Option

006 = 0.4µm Selective Gold,
Standard
008 = 0.8µm Selective Gold,
Special Order



SALES DRAWINGS
CLICK TO DOWNLOAD



Mouser Electronics

Authorized Distributor

Click to View Pricing, Inventory, Delivery & Lifecycle Information:

[KYOCERA AVX:](#)

[009155003541006](#) [009155005541006](#) [009155002541006](#) [009155004541006](#) [009155003541008](#)
[009155004541008](#) [00-9155-002-541-008](#) [009155002541008](#)