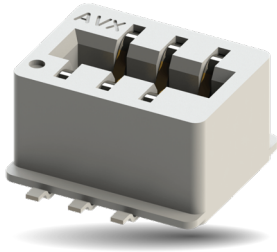


# Dual Row Inverted Thru Board Card Edge

9159-600



## GENERAL DESCRIPTION

KYOCERA AVX Interconnect continues to develop unique connectors to fill the gap in the market. The newest addition to KYOCERA AVX's broadening line of one piece card edge connectors is the 4p-12p Dual Row Inverted version 9159-600, which is extension of popular single row version 9159-500. This new configuration with staggered dual row contacts will allow doubled number of positions in similar size of the connector.

This small connector is packed with several key features that provide significant functionality in a broad range of applications. The proven contact system is gold plated for enhanced reliability, signal integrity and up to 2A/contact current rating. The connector is designed for mating PCB board with 1.6mm thickness and gold plated pads.

## APPLICATIONS

Provides a one piece connector solution for perpendicular PCB mating in applications:

- Automotive
- Industrial
- Lighting

Product Specification: refer to 201-01-226

Application Notes: refer to 201-01-227.

## FEATURES AND BENEFITS

- Up to 2 Amps per contact current rating meets robust application requirements
- Doubled number of positions with dual row solution
- Gold plated BeCu contact system for high reliability in harsh environments
- Low profile thru board design does not interfere with LEDs.
- Halogen-Free

## ELECTRICAL

- Current Rating: See Table Below
- Voltage Rating: 300 VAC (RMS) or DC Equivalent

## ENVIRONMENTAL

- Operating Temperature: -40°C to +125°C
- Storage Temperature: -40°C to +60°C

## MECHANICAL

- Insulator Material: High temperature Nylon UL94V-0 rated
- Contact Material: Beryllium Copper
- Durability: 10 Cycles
- Plating: Gold / Tin over Nickel

## HOW TO ORDER

**00** **9159**  
Prefix Series

**0XX**  
No. of Ways

Code	Size	Contacts
004	2x2	4
006	2x3	6
008	2x4	8
010	2x5	10
012	2x6	12

**60X**  
Dual Row Inverted Thru Board Card Edge  
601 = with Kapton Tape  
603 = without Kapton Tape

Insulator Color		
Code	Color	Application
9	White	UL Approved Standard

**0**  
Keying  
0 = Without keying

**6**  
Plating Options  
6 = Gold plating on nose with Tin on Tails

Safety Standards: UL 1977-File #E90723

### Current Rating

No. of Positions	Current
4 pos	2A
6 pos	1.75A
8 pos	1.75A
10 pos	1.5A
12 pos	1.25A



**SALES DRAWINGS**  
CLICK TO VIEW

# Mouser Electronics

Authorized Distributor

Click to View Pricing, Inventory, Delivery & Lifecycle Information:

[KYOCERA AVX:](#)

[009159004603906](#) [009159006603906](#) [009159008603906](#) [009159010603906](#) [009159012603906](#)  
[009159006601906](#) [009159008601906](#) [009159012601906](#) [009159010601906](#) [009159004601906](#)