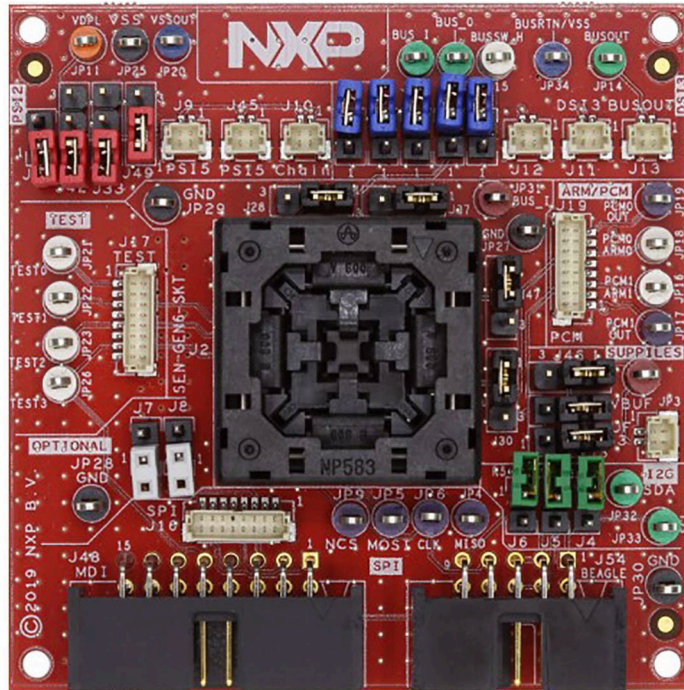


# UM11559

## SEN-GEN6-SKT user manual

Rev. 1 — 5 January 2021

User manual



aaa-039725

### Document information

Info	Content
<b>Keywords</b>	SEN-GEN6-SKT, socket evaluation board
<b>Abstract</b>	User manual



## 1 Introduction

### 1.1 SEN-GEN6-SKT Kit

The SEN-GEN6-SKT board is a socket kit designed to evaluate the FXLS9xxxx, and FXPS7xxxx sensors.

The board supports different communication configurations such as SPI, I<sup>2</sup>C, DSI3 or PSI5. Before inserting a device into the socket, make sure you have properly configured the board to support the desired protocol.

This user manual describes the different options.

#### 1.1.1 Kit contents



**Figure 1. Sensor Socket board (SEN-GEN6-SKT)**

Content of the Kit:

- One automotive Sensor Socket board (SEN-GEN6-SKT)
- Four red jumpers
- Two white jumpers
- Five blue jumpers
- Three green jumpers
- Seven purple jumpers

## 1.1.2 Schematic

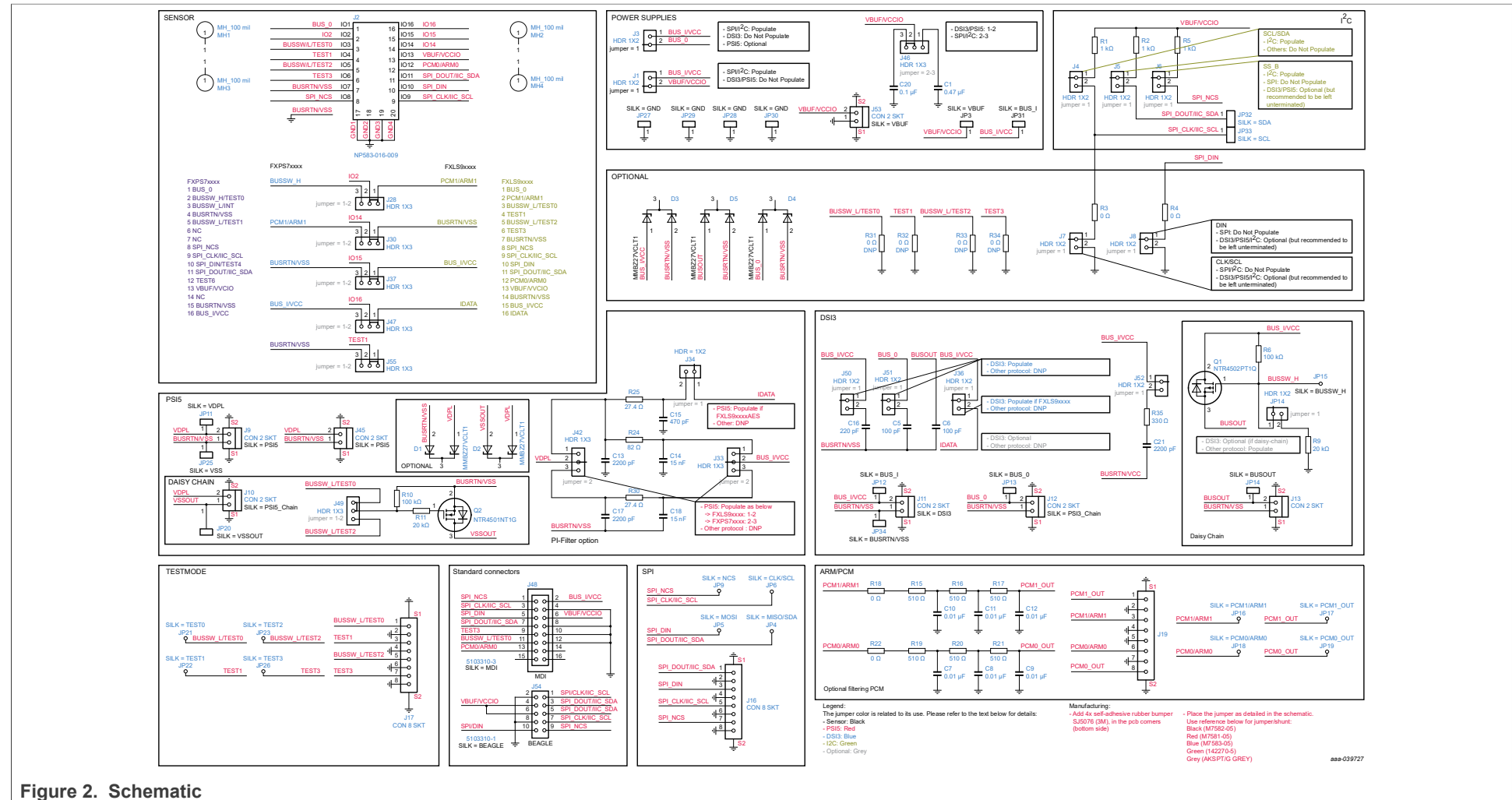
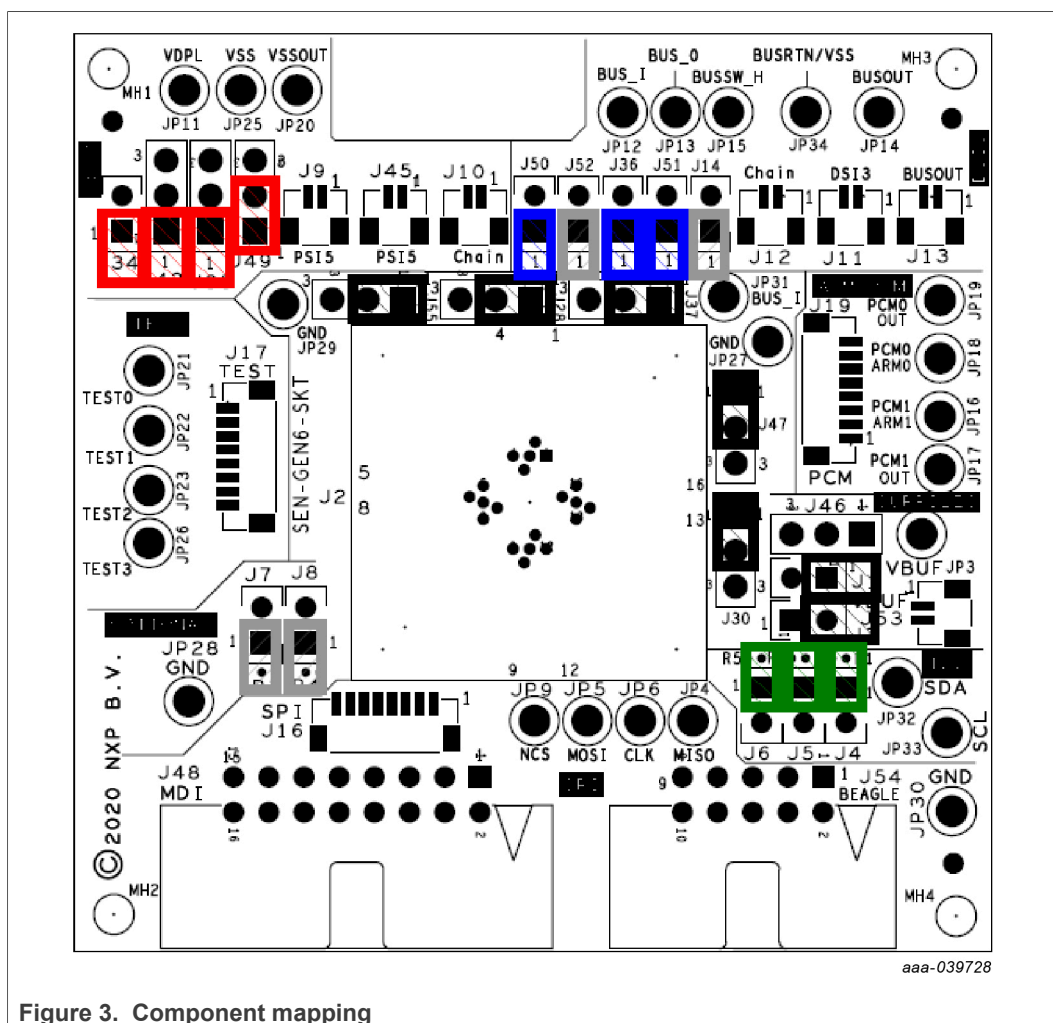


Figure 2. Schematic

### 1.1.3 Component mapping



### Figure 3. Component mapping

## 2 Getting started with the SEN-GEN6-SKT board

### 2.1 Order an FXLSxxxx sensor

Order any FXLSxxxxx sensors from [www.nxp.com](http://www.nxp.com) or through our distributors.

Table 1. FXLSxxxxx parts list

Device	Variation	Protocol
FXLS90322	XY – MM	SPI, DSI3
FXLS90422	XZ – MM	SPI, DSI3
FXLS90333	XY – HH	SPI, DSI3
FXLS90433	XZ – HH	SPI, DSI3
FXLS93322	XY – MM	PSI5
FXLS93422	XZ – MM	PSI5
FXLS93333	XY – HH	PSI5
FXLS93433	XZ – HH	PSI5
FXLS90220	X – M	SPI, DSI3
FXLS90230	X – H	SPI, DSI3
FXLS90120	Z – M	SPI, DSI3
FXLS90130	Z – H	SPI, DSI3
FXLS93220	X – M	PSI5
FXLS93230	X – H	PSI5
FXLS93120	Z – M	PSI5
FXLS93130	Z – H	PSI5
FXPS7115D4	40 – 115 kPa	SPI
FSPS7115DS4T1	40 – 115 kPa	SPI
FSPS7115DI4T1	40 – 115 kPa	I <sup>2</sup> C
FXPS7140D4	40 – 140 kPa	DSI3
FXPS7140P4	50 – 126 kPa	PSI5
FXPS7165DS4T1	60 – 165 kPa	SPI
FXPS7165DI4T1	60 – 165 kPa	I <sup>2</sup> C
FXPS7250DS4T1	20 – 250 kPa	SPI
FXPS7250DI4T1	20 – 250 kPa	I <sup>2</sup> C
FXPS7400DS4T1	20 – 400 kPa	SPI
FXPS7400DI4T1	20 – 400 kPa	I <sup>2</sup> C
FXPS7550DS4T1	20 – 550 kPa	SPI
FXPS7550DI4T1	20 – 550 kPa	I <sup>2</sup> C

## 2.2 Order a kit

To order a socket board, visit <http://www.nxp.com/SEN-GEN6-SKT>.

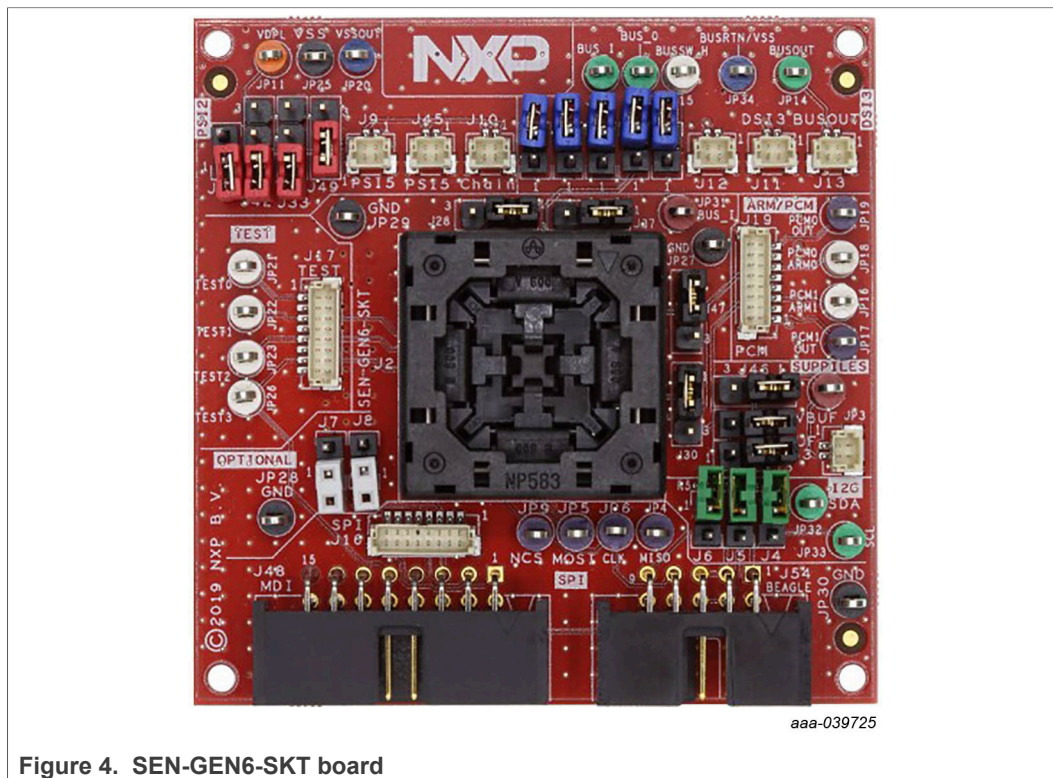


Figure 4. SEN-GEN6-SKT board

## 2.3 Configure the board

The board supports the FXLS9xxxx, and FXPS7xxxx sensor families.

For easier board configuration, the jumpers have been colored per category/protocol. They are listed below:

- Sensor compatibility or power supply related: **black**
- I<sup>2</sup>C: **green**
- DSI3: **blue**
- PS15: **red**
- SPI: N/A

By default, the board is configured for FXLS9xxxx devices in SPI mode. However, the configuration can easily be modified using the jumpers.

By default, most jumpers are floating. Floating means they are attached to their proper connector but remain unconnected. The reference to "DNP" means "Do not populate", meaning it can be removed or unshorted.

### 2.3.1 FXLS9xxxx (default) or FXPS7xxxx

[Table 2](#) identifies the proper jumper settings for family compatibility.

Table 2. Family compatibility

Jumper reference	Jumper position	
	FXLS9xxxx compatibility	FXPS7xxxx compatibility
J28	1-2	2-3
J30	1-2	2-3
J37	1-2	2-3
J47	1-2	2-3
J55	1-2	2-3

There are four possible configurations depending on the bus communication protocol needs of the user.

### 2.3.2 SPI (default)

By default, the board is configured to support SPI communication. NXP recommends configuring J1, J3, and J36 as non-floating potentials on the sensor supply pins. Refer to the product data sheet.

Ensure that J4, J5, and J6 are not populated (pull-up resistors). J7 and J8 must remain floating for SPI mode.

Table 3. SPI mode jumper configuration

Jumper reference	Jumper position	Description
J3	1-2	Connect BUS_I/VCC to VBUF_VCCIO
J1	(1-2)	Connect BUS_I/VCC to BUS_O (optional)
J36	(1-2)	Connect BUS_I/VCC to IDATA (Optional)
J46	2-3	VCC with 1 $\mu$ F capacitor
J4	1 or DNP	Floating
J5	1 or DNP	Floating
J6	1 or DNP	Floating
J7	1 or DNP	Floating
J8	1 or DNP	Floating

### 2.3.3 I<sup>2</sup>C

In order to configure I<sup>2</sup>C mode, begin with the SPI mode configuration and add pull-up resistors on SDA, SCL, and the CS pins.

If the I<sup>2</sup>C lines are already driven by the MCU (shared pull-up), NXP recommends leaving J4 and J6 unpopulated.

Table 4. I<sup>2</sup>C mode jumper configuration

Jumper reference	Jumper position	Description
J3	1-2	Connect BUS_I/VCC to VBUF_VCCIO
J1	(1-2)	Connect BUS_I/VCC to BUS_O (optional)



Table 4. I<sup>2</sup>C mode jumper configuration...continued

Jumper reference	Jumper position	Description
J36	(1-2)	Connect BUS_I/VCC to IDATA (Optional)
J46	2-3	VCC with 1 $\mu$ F capacitor
J4	1-2	Add pull-up resistor on I <sup>2</sup> C SLC signal
J5	1-2	Add pull-up resistor on I <sup>2</sup> C SDA signal
J6	1-2	Add pull-up resistor on SS_B signal
J7	1 or DNP	Floating
J8	1 or DNP	Floating

### 2.3.4 DSI3

The communication interface between an ECU device (such as MC33SA0528AC) and the sensor device in DSI3 mode is established via a DSI3 compatible two-wire interface, with parallel or serial (daisy-chain) connections to the satellite modules.

Table 5. DSI3 mode jumper configuration

Jumper reference	Jumper position	Description
J1	1 or DNP	Floating
J3	1 or DNP	Floating
J46	2-3	BUS_I/VCC with 0.47 $\mu$ F capacitor
J36	1-2	Connect BUS_I/VCC to IDATA
J50	1-2	Add 100 pF cap between BUS_O and BUSRTN
J51	1-2	Add 200 pF cap between BUS_I/VSS and BUSRTN
J52	(1-2)	Optional EMC filter
J8	1 or DNP	Floating

### 2.3.5 PSI5

The communication interface between an ECU device and this sensor device in PSI5 mode is established via a PSI5 compatible two-wire interface, with universal or daisy-chain connections to the satellite modules.

Table 6. PSI5 mode jumper configuration

Jumper reference	Jumper position	Description
J1	1 or DNP	Floating
J3	1 or DNP	Floating
J46	2-3	BUS_I/VCC with 0.47 $\mu$ F capacitor
J42	1-2	Filtering (FXLS9xxxx)
	2-3	Filtering (FXPS7xxxx)
J34	1-2	Connect the filter to IDATA



**Table 6. PSI5 mode jumper configuration...continued**

Jumper reference	Jumper position	Description
J33	1-2	Connect the filter to BUS_I/VCC (FXLS9xxxx only)
	2-3	Connect the filter to BUS_I/VCC (FXLS9xxxx only)
J49	1-2 or 2-3	If using PSI5 daisy chain

## 2.4 Insert the sensor into the socket

[Figure 5](#) illustrates the proper way to insert the sensor into the socket. For proper connection, align the circle on the IC to the arrowhead (identified in yellow in [Figure 5](#)) on the mounting socket.



## 2.5 Connect the board to a compatible ECU

The SEN-SPI-BOX has two dedicated interfaces suitable for SPI and I<sup>2</sup>C communications, an MDI connector and a Beagle connector. The NXP MDI connector supports the SEN-SPI-BOX kit. The Beagle connector is an industrial standard and may be coupled to any Beagle compatible analyzer.

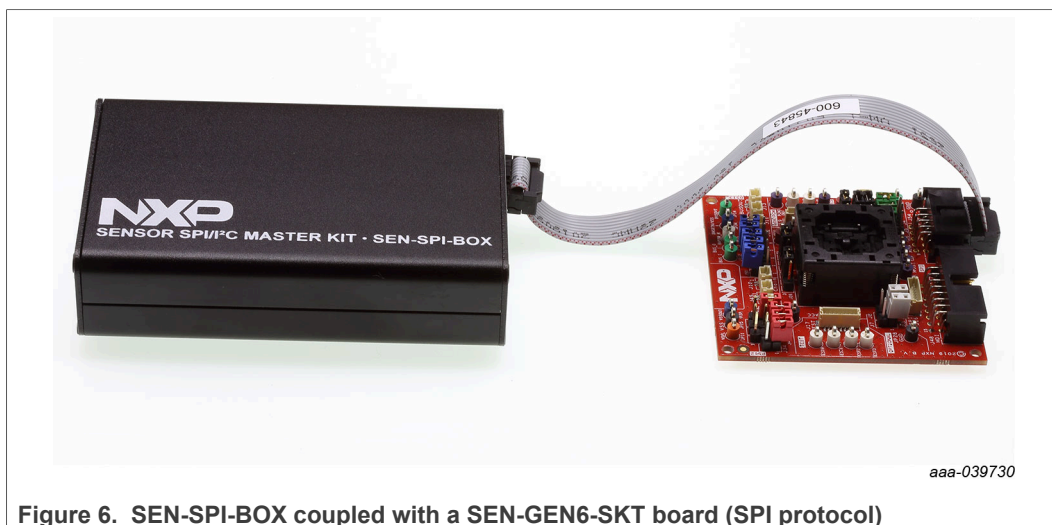


Figure 6. SEN-SPI-BOX coupled with a SEN-GEN6-SKT board (SPI protocol)

For DSI3 and PSI5 support, the SEN-SPI-BOX can be used with a dedicated NXP adapter (SEN-DSI3-ADAPTER and SEN-PSI5-ADAPTER).

Refer to [Section 2.5.1](#) for board connections.

### 2.5.1 NXP MDI and Beagle

[Figure 7](#) illustrates the MDI and Beagle connectors while [Figure 8](#) identifies the individual connectors.

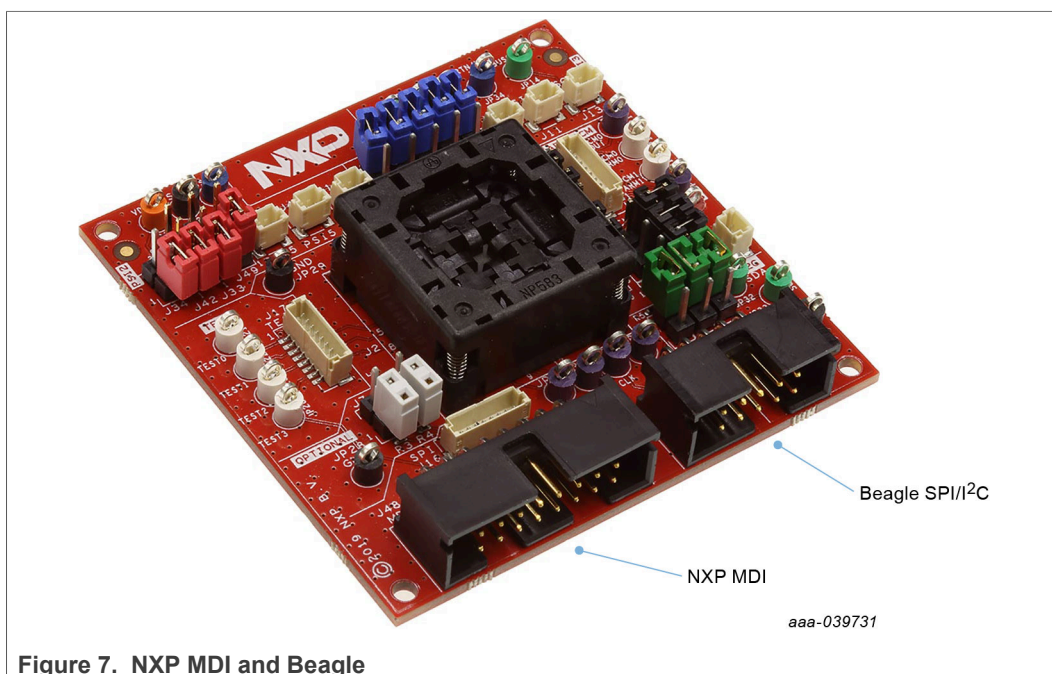


Figure 7. NXP MDI and Beagle

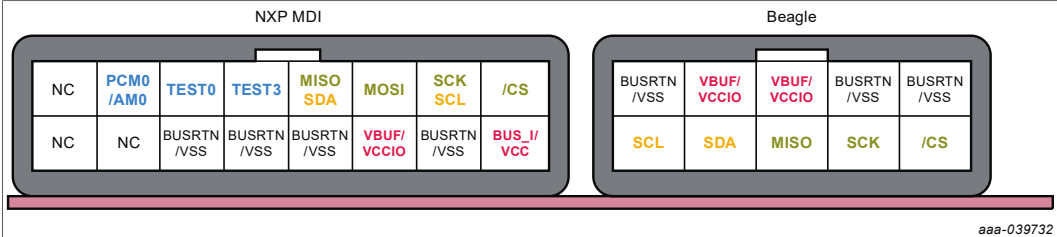


Figure 8. NXP MDI and Beagle connections

2.5.2 SPI

Connect the SEN-GEN6-SKT board to any MCU with SPI compatibility using the 4-pin SPI signals and a power supply.  
VCC must not exceed 5.25 V.

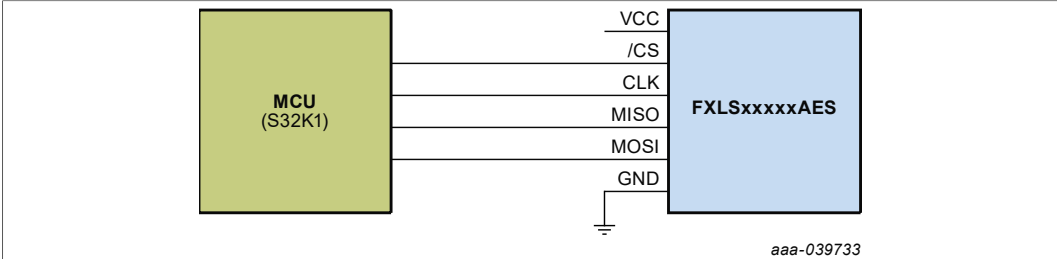


Figure 9. SPI application diagram

Table 7 identifies the various accessible interfaces that can connect to the MCU board.

Table 7. SPI connector reference

Signal name	Connector reference	Description
VCC	JP31	Power supply
GND	JP29	Ground
SS_B	JP9	Chip select
SCLK	JP6	Serial Clock
MISO	JP4	MCU In Sensor out
MOSI	JP5	MCU out Sensor in
SPI	J16	4-pin SPI connector
NXP MDI	J48	General-purpose connector
Beagle	J54	General-purpose connector

2.5.3 I<sup>2</sup>C

Connect the SEN-GEN6-SKT board to any I<sup>2</sup>C MCU board using the two-pin I<sup>2</sup>C signals and a power supply.  
VCC must not exceed 5.25 V.

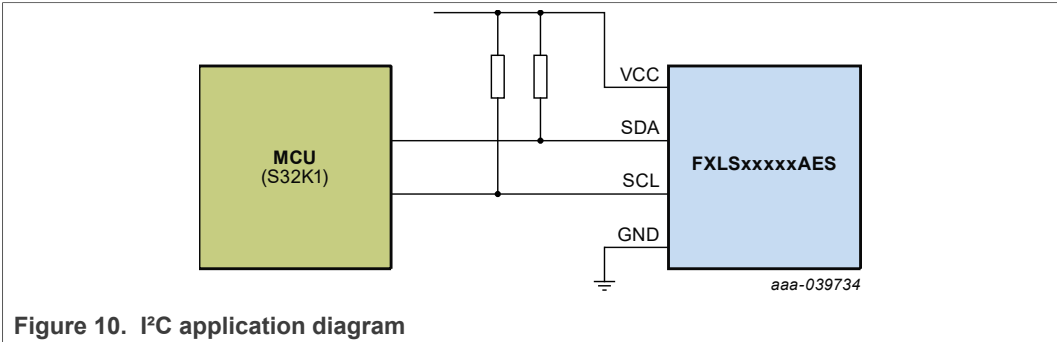


Table 8. I²C connector reference

Signal name	Connector reference	Description
VCC	JP31	Power supply
GND	JP29	Ground
SDA	JP32	I²C Serial Data
SCL	JP33	I²C Serial Clock
I²C	J16	two-pin I²C connector
NXP MDI	J48	General-purpose connector
Beagle	J54	General-purpose connector

The board is equipped with two dedicated interfaces suitable for SPI and I²C communications. The NXP MDI connector supports the SEN-SPI-BOX board. The Beagle connector, an industrial standard, can be interfaced with any Beagle compatible analyzer.

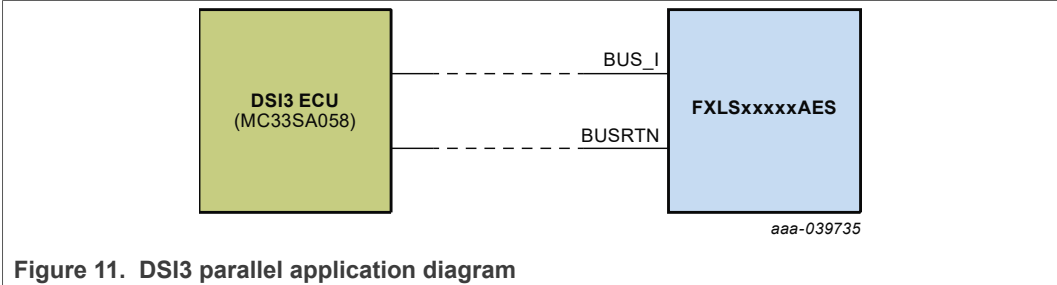
2.5.4 DSI3

The DSI3 protocol, an automotive protocol, provides power supply and bidirectional communication using only two wires. This protocol is suitable for all satellite-based applications (such as airbag) requiring safety and EMC robustness.

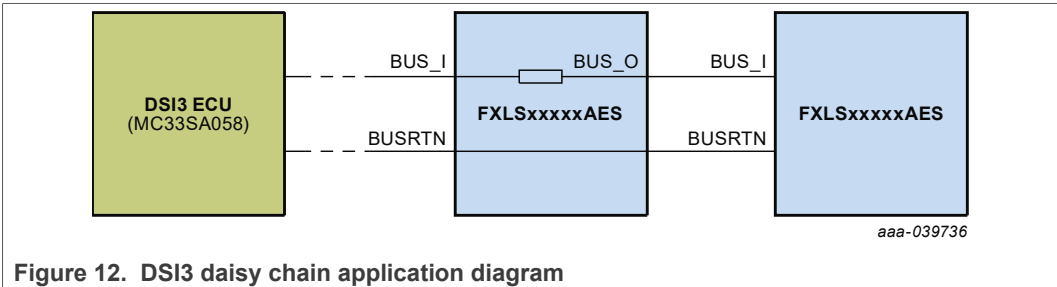
Table 9. DSI3 connector reference

Signal name	Connector reference	Description	Mode
BUSIN	JP12	DSI3 Bus In	Discovery mode / Parallel mode
BUSRTN	JP34	DSI3 bus return	
DSI3	J11	two-pin DSI3 connector	
BUS_O	JP13	Daisy chain out	Daisy chain mode
BUSRTN	JP34	DSI3 bus return	
DSI3_Chain	J12	two-pin DSI3 daisy chain connector	
BUSOUT	JP14	Daisy chain out	Daisy chain mode (FXPS7xxxx only)
BUSRTN	JP34	DSI3 bus return	
DSI3_Chain	J13	two-pin DSI3 daisy chain connector	

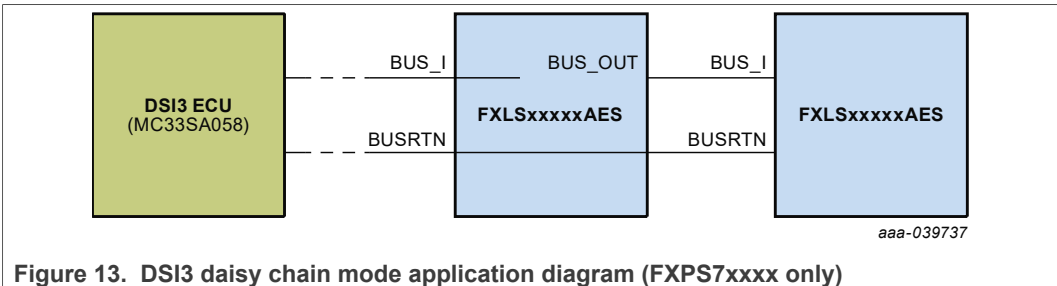
2.5.4.1 DSI3 parallel or discovery mode



2.5.4.2 DSI3 daisy chain



2.5.4.3 DSI3 daisy chain mode (FXPS7xxxx only)



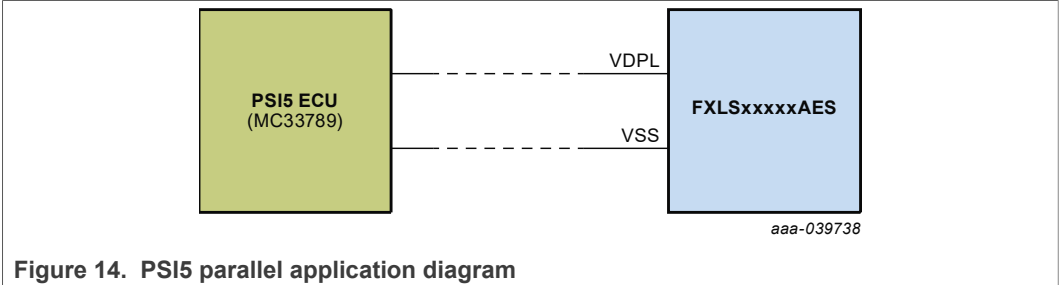
2.5.5 PSI5

The PSI protocol, an automotive protocol, provides power supply and bidirectional communication using only two wires. This protocol is suitable for all satellite-based applications.

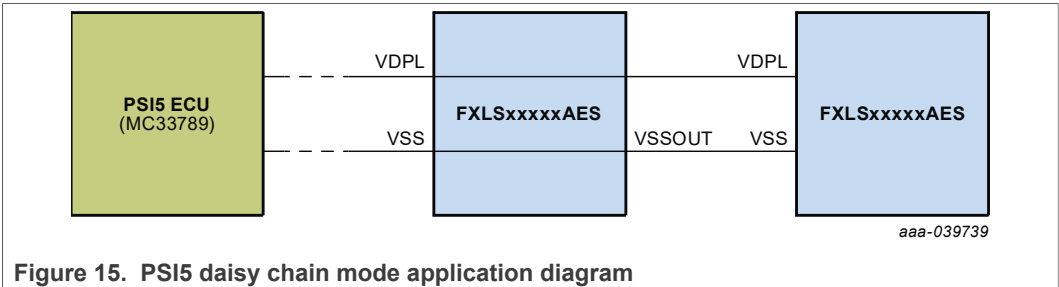
Table 10. PSI5 connector reference

Signal name	Connector reference	Description	Mode
VDPL	JP11	PSI5 BUS IN	Universal mode / Parallel mode
VSS	JP25	PSI5 VSS	
PSI5	J9, J45	two-pin PSI5 connector	
VDPL	JP11	PSI5 BUS IN	Daisy chain mode
VSSOUT	JP20	PSI5 VSS daisy chain	
PSI5_Chain	J10	two-pin PSI5 daisy chain out	

2.5.5.1 PSI5 parallel or universal mode



2.5.5.2 PSI5 daisy chain mode



### 3 Revision history

Table 11. Revision history

Rev	Date	Description
v.1	20210105	Initial release



## 4 Legal information

### 4.1 Definitions

**Draft** — A draft status on a document indicates that the content is still under internal review and subject to formal approval, which may result in modifications or additions. NXP Semiconductors does not give any representations or warranties as to the accuracy or completeness of information included in a draft version of a document and shall have no liability for the consequences of use of such information.

### 4.2 Disclaimers

**Limited warranty and liability** — Information in this document is believed to be accurate and reliable. However, NXP Semiconductors does not give any representations or warranties, expressed or implied, as to the accuracy or completeness of such information and shall have no liability for the consequences of use of such information. NXP Semiconductors takes no responsibility for the content in this document if provided by an information source outside of NXP Semiconductors. In no event shall NXP Semiconductors be liable for any indirect, incidental, punitive, special or consequential damages (including - without limitation - lost profits, lost savings, business interruption, costs related to the removal or replacement of any products or rework charges) whether or not such damages are based on tort (including negligence), warranty, breach of contract or any other legal theory. Notwithstanding any damages that customer might incur for any reason whatsoever, NXP Semiconductors' aggregate and cumulative liability towards customer for the products described herein shall be limited in accordance with the Terms and conditions of commercial sale of NXP Semiconductors.

**Right to make changes** — NXP Semiconductors reserves the right to make changes to information published in this document, including without limitation specifications and product descriptions, at any time and without notice. This document supersedes and replaces all information supplied prior to the publication hereof.

**Applications** — Applications that are described herein for any of these products are for illustrative purposes only. NXP Semiconductors makes no representation or warranty that such applications will be suitable for the specified use without further testing or modification. Customers are responsible for the design and operation of their applications and products using NXP Semiconductors products, and NXP Semiconductors accepts no liability for any assistance with applications or customer product design. It is customer's sole responsibility to determine whether the NXP Semiconductors product is suitable and fit for the customer's applications and products planned, as well as for the planned application and use of customer's third party customer(s). Customers should provide appropriate design and operating safeguards to minimize the risks associated with their applications and products. NXP Semiconductors does not accept any liability related to any default, damage, costs or problem which is based on any weakness or default in the customer's applications or products, or the application or use by customer's third party customer(s). Customer is responsible for doing all necessary testing for the customer's applications and products using NXP Semiconductors products in order to avoid a default of the applications and the products or of the application or use by customer's third party customer(s). NXP does not accept any liability in this respect.

**Export control** — This document as well as the item(s) described herein may be subject to export control regulations. Export might require a prior authorization from competent authorities.

**Evaluation products** — This product is provided on an "as is" and "with all faults" basis for evaluation purposes only. NXP Semiconductors, its affiliates and their suppliers expressly disclaim all warranties, whether express,

implied or statutory, including but not limited to the implied warranties of non-infringement, merchantability and fitness for a particular purpose. The entire risk as to the quality, or arising out of the use or performance, of this product remains with customer. In no event shall NXP Semiconductors, its affiliates or their suppliers be liable to customer for any special, indirect, consequential, punitive or incidental damages (including without limitation damages for loss of business, business interruption, loss of use, loss of data or information, and the like) arising out of the use of or inability to use the product, whether or not based on tort (including negligence), strict liability, breach of contract, breach of warranty or any other theory, even if advised of the possibility of such damages. Notwithstanding any damages that customer might incur for any reason whatsoever (including without limitation, all damages referenced above and all direct or general damages), the entire liability of NXP Semiconductors, its affiliates and their suppliers and customer's exclusive remedy for all of the foregoing shall be limited to actual damages incurred by customer based on reasonable reliance up to the greater of the amount actually paid by customer for the product or five dollars (US\$5.00). The foregoing limitations, exclusions and disclaimers shall apply to the maximum extent permitted by applicable law, even if any remedy fails of its essential purpose.

**Translations** — A non-English (translated) version of a document is for reference only. The English version shall prevail in case of any discrepancy between the translated and English versions.

**Security** — Customer understands that all NXP products may be subject to unidentified or documented vulnerabilities. Customer is responsible for the design and operation of its applications and products throughout their lifecycles to reduce the effect of these vulnerabilities on customer's applications and products. Customer's responsibility also extends to other open and/or proprietary technologies supported by NXP products for use in customer's applications. NXP accepts no liability for any vulnerability. Customer should regularly check security updates from NXP and follow up appropriately. Customer shall select products with security features that best meet rules, regulations, and standards of the intended application and make the ultimate design decisions regarding its products and is solely responsible for compliance with all legal, regulatory, and security related requirements concerning its products, regardless of any information or support that may be provided by NXP. NXP has a Product Security Incident Response Team (PSIRT) (reachable at PSIRT@nxp.com) that manages the investigation, reporting, and solution release to security vulnerabilities of NXP products.

**Suitability for use in automotive applications** — This NXP product has been qualified for use in automotive applications. It has been developed in accordance with ISO 26262, and has been ASIL-classified accordingly. If this product is used by customer in the development of, or for incorporation into, products or services (a) used in safety critical applications or (b) in which failure could lead to death, personal injury, or severe physical or environmental damage (such products and services hereinafter referred to as "Critical Applications"), then customer makes the ultimate design decisions regarding its products and is solely responsible for compliance with all legal, regulatory, safety, and security related requirements concerning its products, regardless of any information or support that may be provided by NXP. As such, customer assumes all risk related to use of any products in Critical Applications and NXP and its suppliers shall not be liable for any such use by customer. Accordingly, customer will indemnify and hold NXP harmless from any claims, liabilities, damages and associated costs and expenses (including attorneys' fees) that NXP may incur related to customer's incorporation of any product in a Critical Application.

### 4.3 Trademarks

Notice: All referenced brands, product names, service names and trademarks are the property of their respective owners.

**NXP** — wordmark and logo are trademarks of NXP B.V.

## Tables

Tab. 1.	FXLSxxxxx parts list .....	5	Tab. 7.	SPI connector reference .....	11
Tab. 2.	Family compatibility .....	7	Tab. 8.	I <sup>2</sup> C connector reference .....	12
Tab. 3.	SPI mode jumper configuration .....	7	Tab. 9.	DSI3 connector reference .....	12
Tab. 4.	I <sup>2</sup> C mode jumper configuration .....	7	Tab. 10.	PSI5 connector reference .....	13
Tab. 5.	DSI3 mode jumper configuration .....	8	Tab. 11.	Revision history .....	15
Tab. 6.	PSI5 mode jumper configuration .....	8			

## Figures

Fig. 1.	Sensor Socket board (SEN-GEN6-SKT) .....	2	Fig. 9.	SPI application diagram .....	11
Fig. 2.	Schematic .....	3	Fig. 10.	I <sup>2</sup> C application diagram .....	12
Fig. 3.	Component mapping .....	4	Fig. 11.	DSI3 parallel application diagram .....	13
Fig. 4.	SEN-GEN6-SKT board .....	6	Fig. 12.	DSI3 daisy chain application diagram .....	13
Fig. 5.	Insert sensor in to SEN-GEN6-SKT socket .....	9	Fig. 13.	DSI3 daisy chain mode application diagram (FXPS7xxxx only) .....	13
Fig. 6.	SEN-SPI-BOX coupled with a SEN-GEN6- SKT board (SPI protocol) .....	10	Fig. 14.	PSI5 parallel application diagram .....	14
Fig. 7.	NXP MDI and Beagle .....	10	Fig. 15.	PSI5 daisy chain mode application diagram ....	14
Fig. 8.	NXP MDI and Beagle connections .....	11			

## Contents

<b>1</b>	<b>Introduction .....</b>	<b>2</b>
1.1	SEN-GEN6-SKT Kit .....	2
1.1.1	Kit contents .....	2
1.1.2	Schematic .....	3
1.1.3	Component mapping .....	4
<b>2</b>	<b>Getting started with the SEN-GEN6-SKT board .....</b>	<b>5</b>
2.1	Order an FXLSxxxx sensor .....	5
2.2	Order a kit .....	6
2.3	Configure the board .....	6
2.3.1	FXLS9xxxx (default) or FXPS7xxxx .....	6
2.3.2	SPI (default) .....	7
2.3.3	I <sup>2</sup> C .....	7
2.3.4	DSI3 .....	8
2.3.5	PSI5 .....	8
2.4	Insert the sensor into the socket .....	9
2.5	Connect the board to a compatible ECU .....	9
2.5.1	NXP MDI and Beagle .....	10
2.5.2	SPI .....	11
2.5.3	I <sup>2</sup> C .....	11
2.5.4	DSI3 .....	12
2.5.4.1	DSI3 parallel or discovery mode .....	13
2.5.4.2	DSI3 daisy chain .....	13
2.5.4.3	DSI3 daisy chain mode (FXPS7xxxx only) .....	13
2.5.5	PSI5 .....	13
2.5.5.1	PSI5 parallel or universal mode .....	14
2.5.5.2	PSI5 daisy chain mode .....	14
<b>3</b>	<b>Revision history .....</b>	<b>15</b>
<b>4</b>	<b>Legal information .....</b>	<b>16</b>

Please be aware that important notices concerning this document and the product(s) described herein, have been included in section 'Legal information'.

© NXP B.V. 2021.

All rights reserved.

For more information, please visit: <http://www.nxp.com>

For sales office addresses, please send an email to: [salesaddresses@nxp.com](mailto:salesaddresses@nxp.com)

Date of release: 5 January 2021  
Document identifier: UM11559

# Mouser Electronics

Authorized Distributor

Click to View Pricing, Inventory, Delivery & Lifecycle Information:

NXP:

SEN-GEN6-SKT