

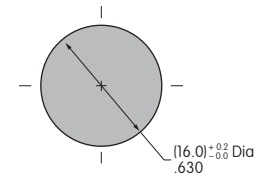
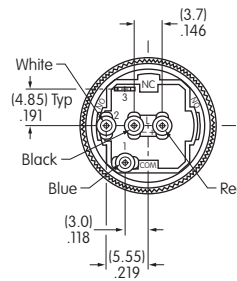
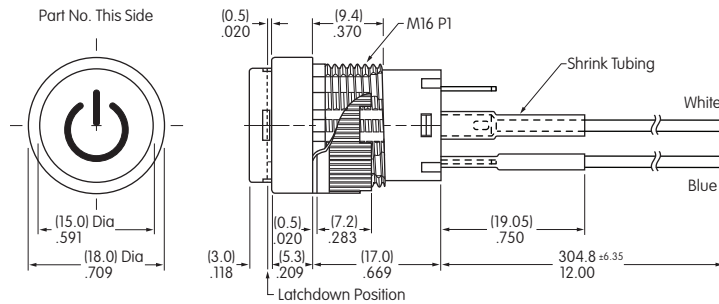
## YB15Y020

### Bushing Mount

### Single Pole

Dimensions in mm/inch

### PANEL CUTOUT



### Panel Thickness Range

.020" ~ .197"  
(0.5mm ~ 5.0mm)

Supplied with mounting nut and AT089 o-ring

### BASE SWITCH

### SUPER BRIGHT LED CAP

### LEGEND SPECIFICATIONS

#### Part Number

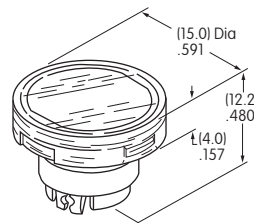
YB15WCKW01-6F-JB

AT3015JB  
Round Cap

Clear Lens  
White Insert

#### Materials

Lens & Insert: Polycarbonate  
Seal/Diffuser: Thermoplastic Elastomer



Legend	Power Symbol
Type Style	N/A
Type Size	N/A
Legend Color	Black
Print Method	Laser Etch on Inside of Lens

Legend shown is illustrative only.  
Actual art may vary.

### POLES & CIRCUITS

Pole	Model	Plunger Position ( ) = Momentary		Connected Terminals		Throw & Switch/Lamp Schematics
		Normal	Down	Normal	Down	
SP	YB15	ON	(ON)	1-3	1-2	SPDT

Notes: Switch is marked with NC, NO, COM, L+, L-.  
Lamp circuit is isolated and requires an external power source.

L (+) — O — L (-) L

### WIRING

Number of Wires	Terminal 1	Terminal 2	Terminal L-	Terminal L+
4	Blue	White	Black	Red

### WIRING SPECIFICATIONS

UL1007 Stranded Wire	Temperature Range: -40°C and +105°C (-40°F and +221°F)
Voltage: 300V	
22 AWG	

### ELECTRICAL SPECIFICATIONS FOR SUPER BRIGHT GREEN LED

#### Super Bright LED AT632F



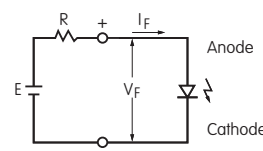
T-1 Bi-pin



Color	Green	
Maximum Forward Current	$I_{FM}$	30mA
Typical Forward Current	$I_F$	20mA
Forward Voltage	$V_F$	3.3V
Maximum Reverse Voltage	$V_{RM}$	7V
Current Reduction Rate Above 25°C	$\Delta I_F$	0.40mA/°C
Ambient Temperature Range		-25°C ~ +50°C



The electrical specifications shown are determined at a basic temperature of 25°C. If the source voltage exceeds the rated voltage, a ballast resistor is required. The following diagram and formula will assist in calculating the value of the ballast resistor.



$$R = \frac{E - V_F}{I_F}$$

Where: R = Resistor Value (Ohms)  
E = Source Voltage (V)  
 $V_F$  = Forward Voltage (V)  
 $I_F$  = Forward Current (A)

# Base Switch Specifications

## Electrical Capacity (Resistive Load)

**Power Level:** 3A @ 125V AC or 3A @ 250V AC or 3A @ 30V DC


## Other Ratings

<b>Contact Resistance:</b>	50 milliohms maximum
<b>Insulation Resistance:</b>	200 megohms minimum @ 500V DC
<b>Dielectric Strength:</b>	1,000V AC minimum between contacts for 1 minute minimum; 1,500V AC minimum between contacts and case for 1 minute minimum
<b>Mechanical Life:</b>	1,000,000 operations minimum
<b>Electrical Life:</b>	100,000 operations minimum
<b>Nominal Operating Force:</b>	1.67N
<b>Contact Timing:</b>	Nonshorting (break-before-make)
<b>Plunger Travel:</b>	Pretravel .059" (1.5mm) Overtravel .059" (1.5mm) Total Travel .118" (3.0mm)

## Materials & Finishes

<b>Housing/Bezel:</b>	Glass fiber reinforced polyamide (UL94V-0)
<b>Base:</b>	Glass fiber reinforced polyamide (UL94V-0)
<b>Movable Contactor:</b>	Phosphor bronze with silver plating
<b>Movable Contacts:</b>	Silver alloy with silver plating
<b>Stationary Contacts:</b>	Silver alloy
<b>Switch Terminals:</b>	Phosphor bronze with tin plating
<b>Lamp Terminals:</b>	Phosphor bronze with tin plating

## Environmental Data

<b>Operating Temperature Range:</b>	-25°C through +50°C (-13°F through +122°F)
<b>Humidity:</b>	90 ~ 95% humidity for 96 hours @ 40°C (104°F)
<b>Vibration:</b>	10 ~ 55Hz with peak-to-peak amplitude of 1.5mm traversing the frequency range and returning in 1 minute; 3 right angled directions for 2 hours
<b>Shock:</b>	50G (490m/s <sup>2</sup> ) acceleration (tested in 6 right angled directions, with 5 shocks in each direction)
<b>Sealing:</b>	IP65 of IEC 60529 Standard
<b>RoHS Compliant:</b>	

## Installation

<b>Mounting Torque:</b>	0.785Nm (6.95 lb•in) maximum
<b>Quick Connect Force:</b>	24.5N maximum downward force on connector
<b>Soldering Time &amp; Temperature:</b>	Manual Soldering: 390°C for 4 seconds maximum, 2 cycles

## Standards & Certifications

<b>Flammability Standards:</b>	UL94V-0 housing and base
--------------------------------	--------------------------

# Mouser Electronics

Authorized Distributor

Click to View Pricing, Inventory, Delivery & Lifecycle Information:

[NKK Switches:](#)

[YB15Y020](#)