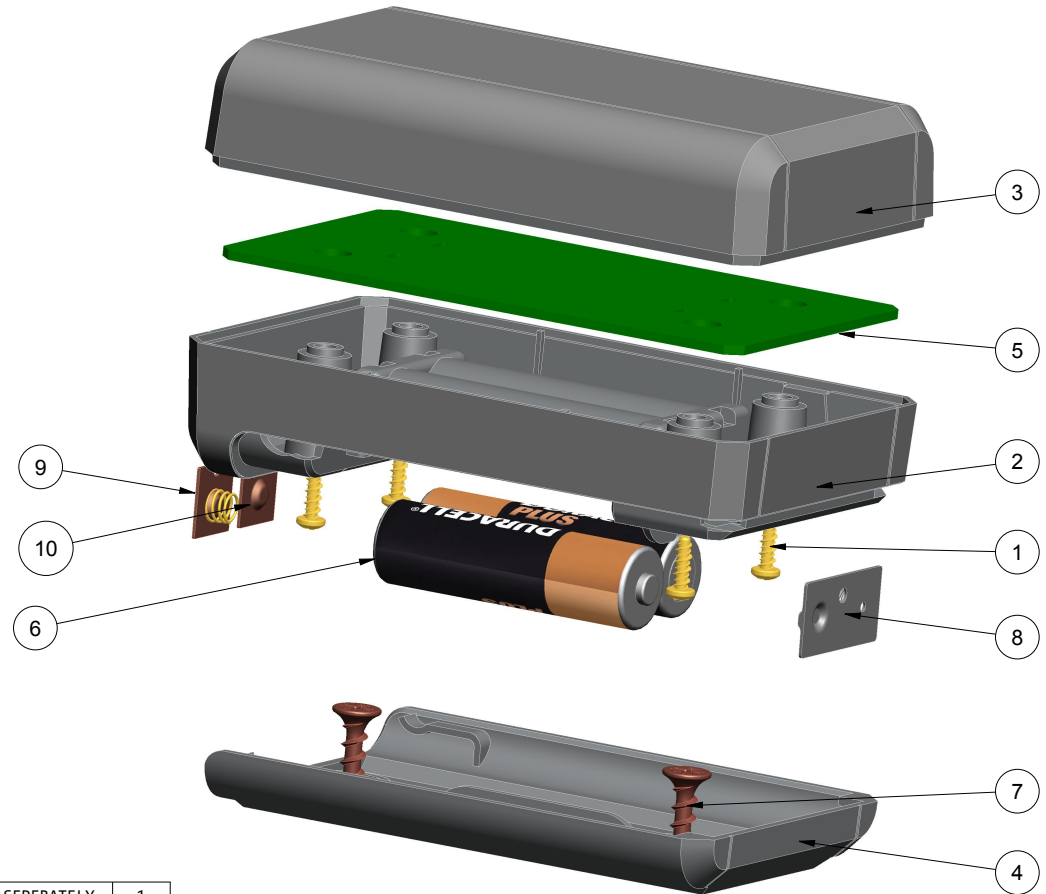


# NOTES: UNLESS OTHERWISE SPECIFIED

- CORNERS DRAWN SHARP TO BE R.005 MAXIMUM.
- EXTERIOR SURFACE TEXTURE TO BE EDM FINISH. EQUIVALENT TO MT-11010. TEXTURE ON ENCLOSURE WILL VARY FROM TIME TO TIME AS THE TOOL WEARS AND IT BECOMES NESSEARY TO REAPPLY.
- INTERIOR SURFACE TEXTURE TO BE: NONE.
- ALL INSIDE RADII .010R. UNLESS OTHERWISE SPECIFIED.
- ALL EXTERNAL DIMENSIONS AFFECTED BY THE DRAFT APPLY AT THE LARGE END OF THE FEATURE, AND ALL INTERNAL FEATURES AFFECTED BY THE DRAFT APPLY AT THE SMALL END OF THE FEATURE UNLESS OTHERWISE SPECIFIED.
- 1 DEGREE DRAFT IN THE DIRECTION OF PULL IS PERMISSIBLE UNLESS OTHERWISE SPECIFIED.
- MATERIAL / COLOR: ABS PLASTIC IS STANDARD IN BLACK OR WHITE. CUSTOM MATERIALS AND COLORS ARE AVAILABLE UPON REQUEST FOR QUOTE. ALTERNATE RESINS HAVE DIFFERENT SHRINK RATES, AND WILL EFFECT DIMENSIONS.
- PCB SIZES ARE RECOMMENDATIONS ONLY. FINAL SIZES AND VERIFICATION OF ITS FIT ARE THE SOLE RESPONSIBILITY OF EACH CUSTOMER.
- ASSEMBLY SCREWS FOR THE ENCLOSURE INCLUDED. MOUNTING SCREWS FOR THE WALL SOLD SEPERATELY.
- THIS DRAWING IS BASED ON A SOLID MODEL, AND IS FURTHER DEFINED BY THE SOLID MODEL FILE.
- ALLOWABLE FLASH: 0.010 MAX.
- ALL EJECTOR PIN MARKS TO BE WITHIN 0.010" OF FLUSH, PROTRUDING OR BELOW FLUSH.
- TRIM GATE WITHIN 0.030" OF FLUSH.

R E V I S I O N					
REV.	DRAWN BY	ECO No	DESCRIPTION	DATE	APPROVE
A	M BOYER	2002	PRELIMINARY RELEASE	2020-Jun-27	J.T.
B	M BOYER		WIDEN BEAUTY STRIPE AND ADJUST TAB	2020-Aug-24	J.T.
C	M BOYER		ADD PCB SHOULDERS AND TIGHTEN BATTERY CONTACT SLOTS	2020-Sep-02	J.T.
D	M BOYER		UPDATE HATCH	2020-Oct-16	J.T.
E	M BOYER		ADD STANDARD HATCH OPTION	2021-Jan-25	J.T.
F	M BOYER		WRAP SHEET DETAILS FOR DIR	2021-Nov-03	



SCALE 0.800

422517(x) CONFIGURATIONS		
	-W	-Blank
422517 COVER	1	1
422517 BASE	1	1
422517 HATCH		1
422517 WALL HATCH	1	
#4 HiLo SCREW .375"	4	4

10	AA-SINGL-CONTACT-POS	ACC-AAPOS-5223	SPRING STEEL	SOLD SEPERATELY	1
9	AA-SINGL-CONTACT-NEG	ACC-AANEG-5201	SPRING STEEL	SOLD SEPERATELY	1
8	AA-DBL-CONTACT	ACC-AADBL-5212	SPRING STEEL	SOLD SEPERATELY	1
7	SCREW-DRYWALLX750	DRYWALL SCREW - REFERENCE	CUSTOMER SUPPLIED	DRYWALL SCREW	2
6	AA-BATTERY	"AA" SIZE BATTERY	REFERENCE	CUSTOMER SUPPLIED	2
5	422517-PCB	422517 PCB - REFERENCE	.062" THICK	CUSTOMER SUPPLIED	1
4	422517-HATCH-WALL	422517 WALL HATCH - STANDARD	ABS	BLACK or WHITE	1
3	422517-COVER	422517 COVER - STANDARD	ABS	BLACK or WHITE	1
2	422517-BASE	422517 BASE - STANDARD	ABS	BLACK or WHITE	1
1	N04_HI-LO	ASSEMBLY & PCB	No4 HiLo x 3/8"	4 INCLUDED	4
ITEM	FILE NAME	DESCRIPTION	MATERIAL	COLOR	QTY.

## BILL OF MATERIALS

THIRD ANGLE PROJECTION  
DO NOT SCALE DRAWING

NOTICE: THE INFORMATION AND DATA CONTAINED HEREIN IS CONSIDERED PROPRIETARY TO ALLTEC INTEGRATED MFG INC & SHALL REMAIN THE EXCLUSIVE PROPERTY OF ALLTEC INTEGRATED MFG INC. THE HOLDER WILL ASSUME CUSTODY AND CONTROL THAT THIS DOCUMENT WILL NOT BE COPIED, REPRODUCED, OR DISCLOSED WITHOUT THE EXPRESS WRITTEN CONSENT OF ALLTEC INTEGRATED MFG INC. NOT CONSTITUTE A GRANT TO MANUFACTURE ANY ITEMS.  
© 2021

TOLERANCES: UNLESS OTHERWISE SPECIFIED  
DIMENSIONS ARE IN U.S. INCHES.  
X.XX = .015 X.XXXX = .001  
X.XXX = .010 X.X" = 1"

NEW AGE ENCLOSURES

Customer's Part No: 422517

APPROVAL	BY	DATE
CHECK		
ENG.		
SCALE	AS NOTED	

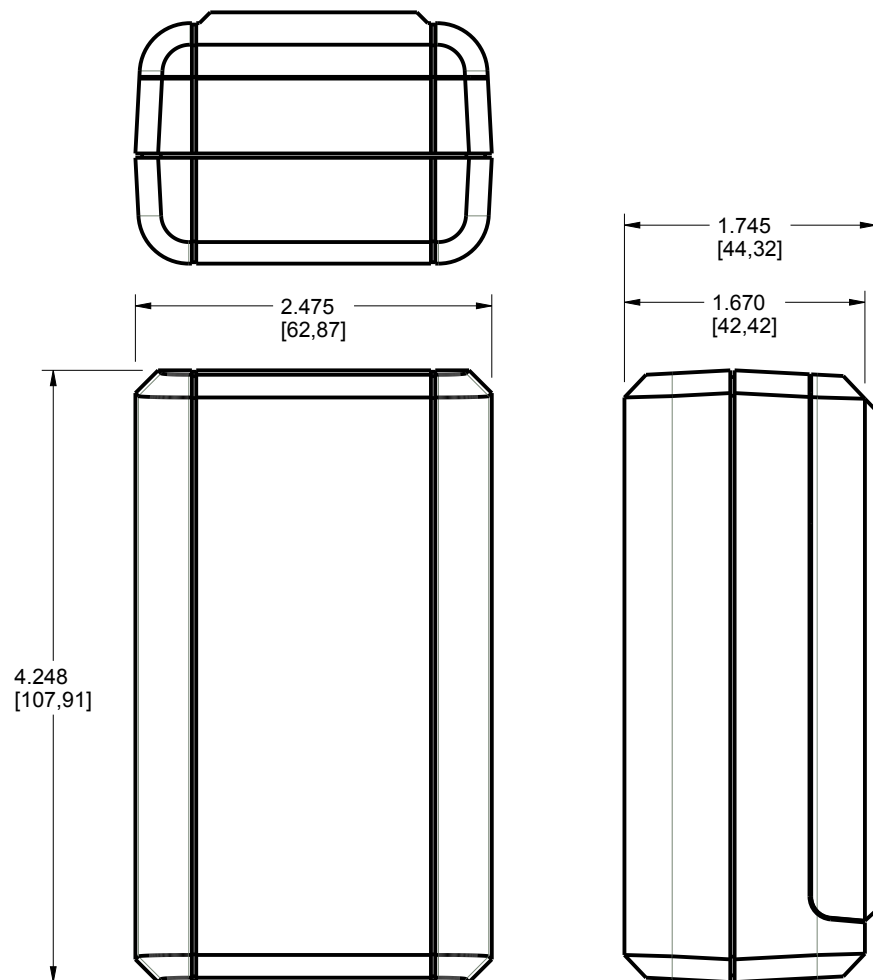
DRAWN BY  
M BOYER  
2020-Jul-27

**NEW AGE ENCLOSURES**  
2240 South Thornburg Street Santa Maria, CA. 93455  
ph. (855) 462-3625 fax (805) 595-1024  
www.newageenclosures.com

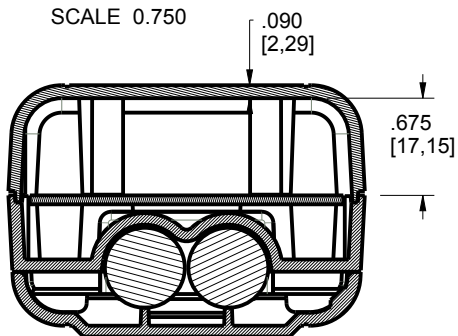
**MEDIUM AA BATTERY BOX**  
**SXX-422517-XXX**

SIZE	DRAWING NAME	SHEET	REV.DOC
A	422517_RF	1 OF 7	F

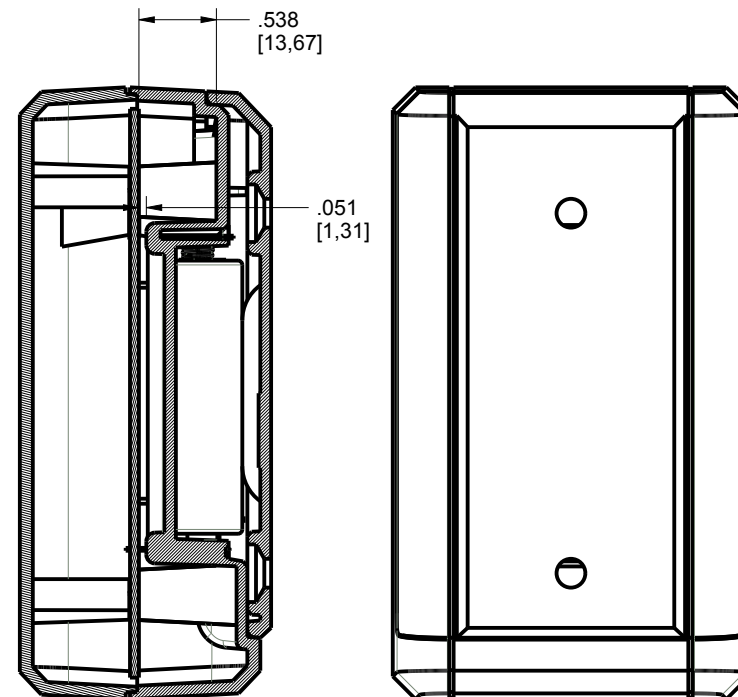
# 422517 ASSEMBLY



SCALE 0.750



SECTION Y-Y



SECTION X-X

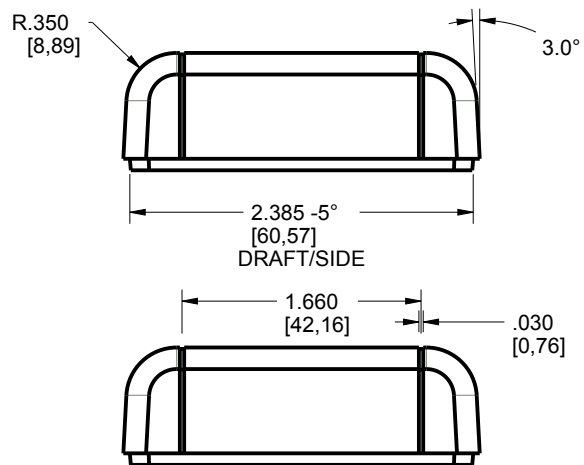
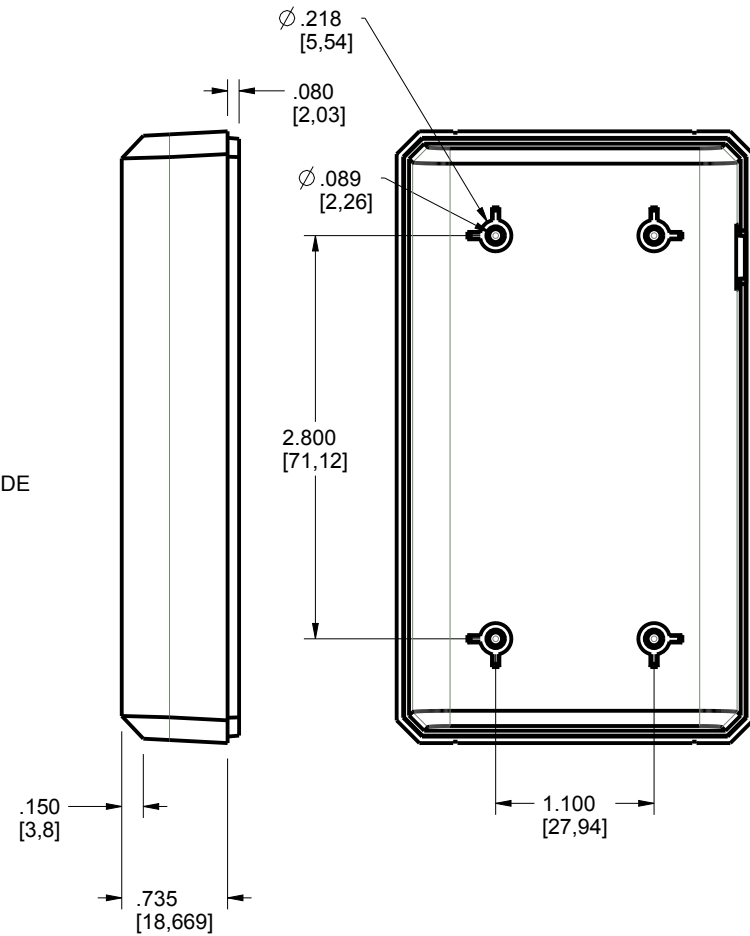
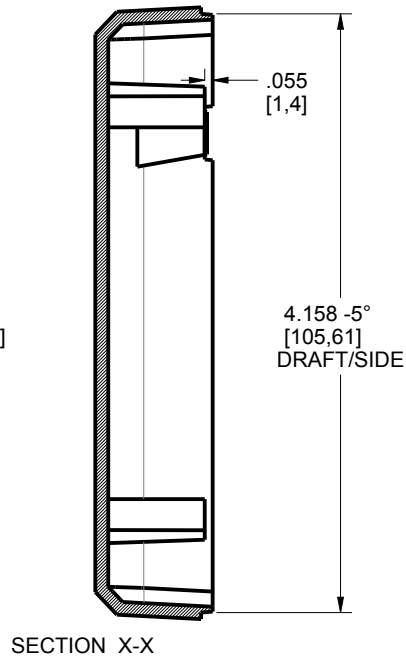
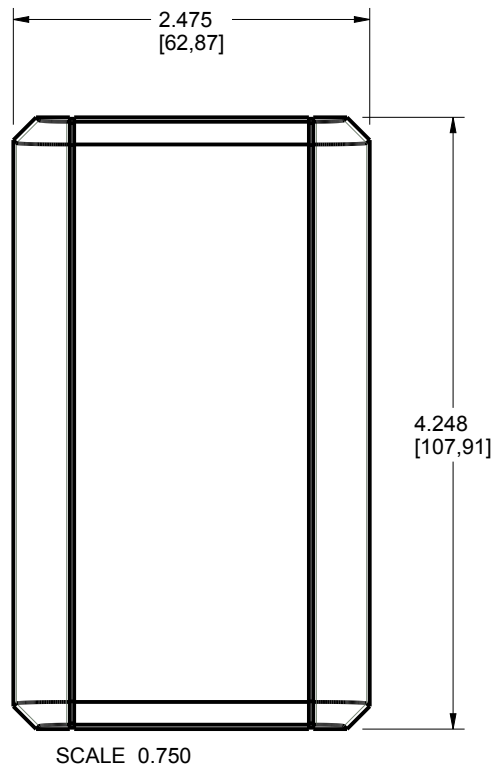
TOLERANCES: UNLESS OTHERWISE SPECIFIED DIMENSIONS ARE IN U.S. INCHES.		
X.XX = .015 X.XXXX = .001		
X.XXX = .010 X.X° = 1°		
NEW AGE ENCLOSURES		
Customer's Part No: 422517		
APPROVAL	BY	DATE
CHECK		
ENG.		
SCALE	AS NOTED	
DRAWN BY	2020-Jul-27	
M BOYER		

**NEW AGE ENCLOSURES**  
 2240 South Thornburg Street Santa Maria, CA. 93455  
 ph. (855) 462-3625 fax (805) 595-1024  
[www.newageenclosures.com](http://www.newageenclosures.com)

**MEDIUM AA BATTERY BOX**  
**SXX-422517-XXX**

SIZE	DRAWING NAME	SHEET	REV.DOC
A	422517_RF	2 OF 7	F

# 422517 COVER



TOLERANCES- UNLESS OTHERWISE SPECIFIED  
DIMENSIONS ARE IN U.S. INCHES.  
X.XX = .015 X.XXXX = .001  
X.XXX = .010 X.X° = 1°

NEW AGE ENCLOSURES

Customer's Part No: 422517

APPROVAL	BY	DATE
CHECK		
ENG.		
SCALE	AS NOTED	

DRAWN BY  
M BOYER

2020-Jul-27

**NEW AGE  
ENCLOSURES**

2240 South Thornburg Street Santa Maria, CA. 93455  
ph. (855) 462-3625 fax (805) 595-1024  
www.newageenclosures.com

**MEDIUM AA BATTERY BOX  
SXX-422517-XXX**

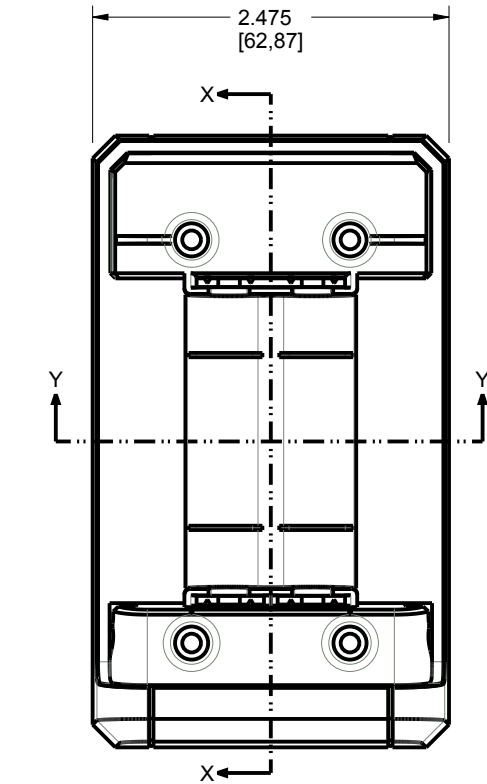
SIZE  
A

DRAWING NAME  
422517\_RF

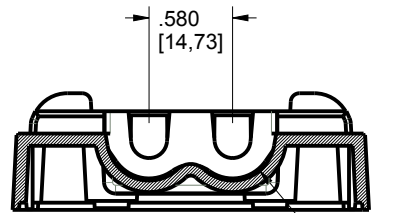
SHEET  
3 OF 7

REV.DOC  
F

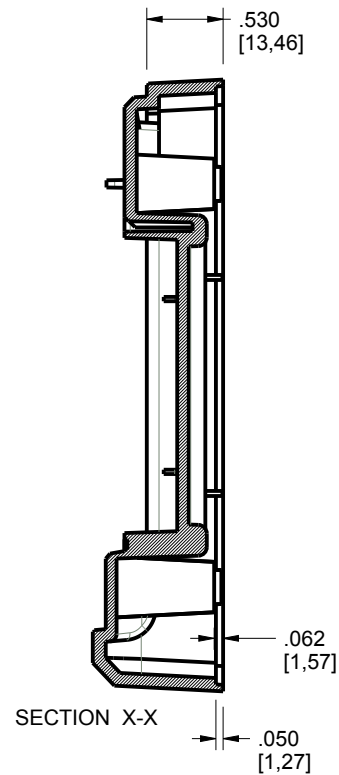
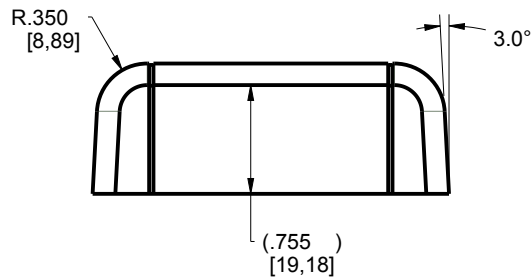
# 422517 BASE



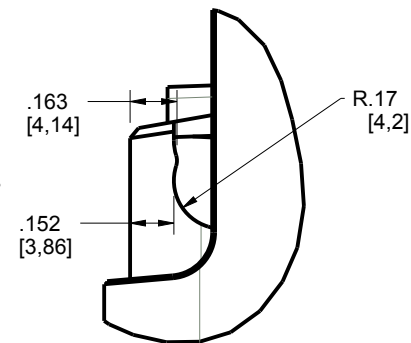
SCALE 0.750



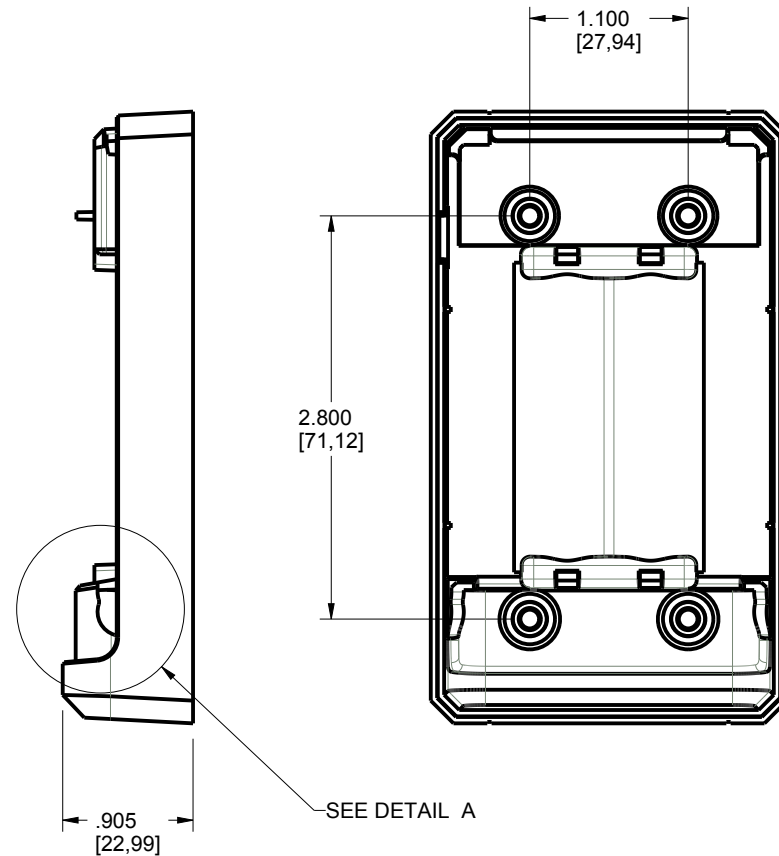
SECTION Y-Y



SECTION X-X



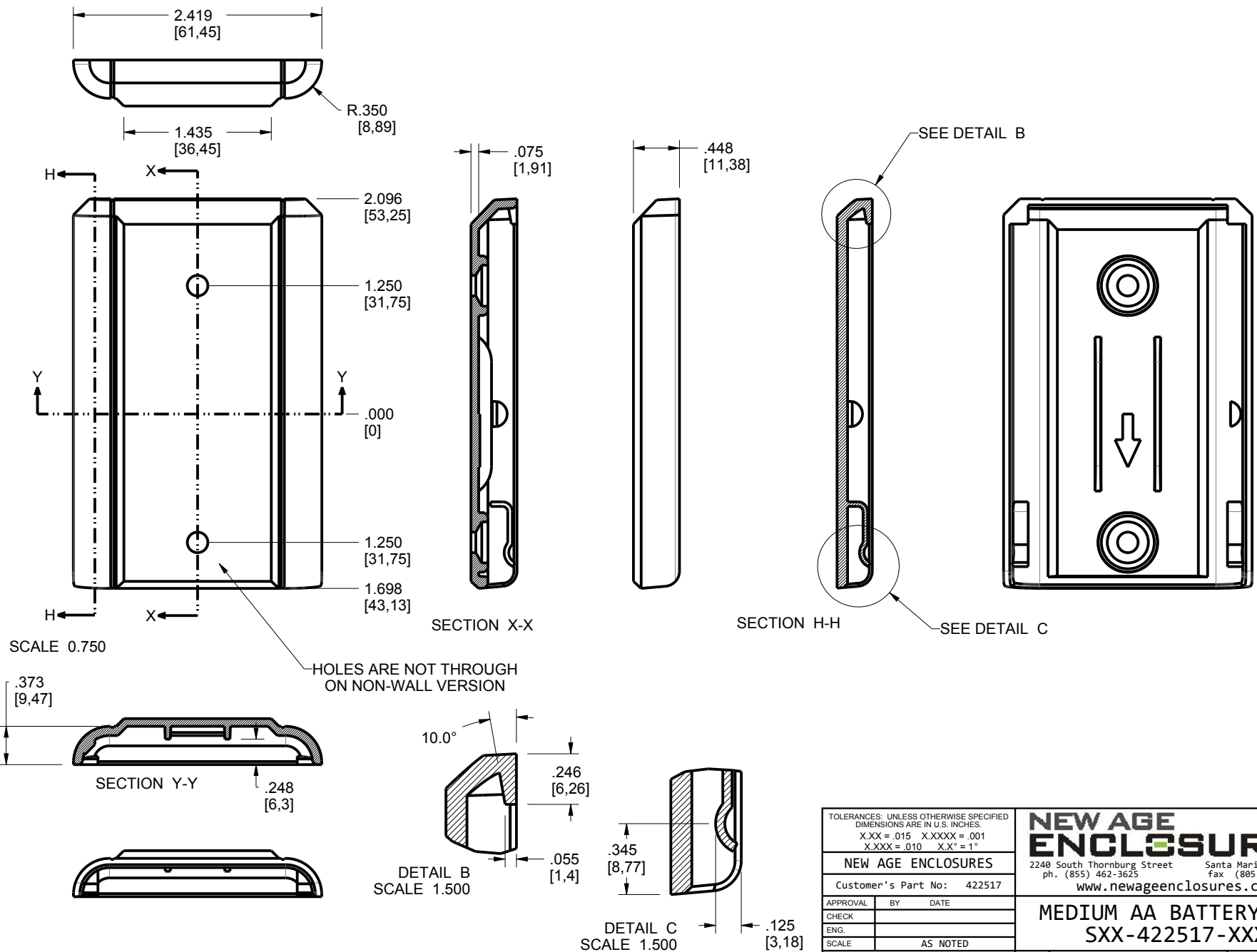
DETAIL A  
SCALE 1.500



TOLERANCES: UNLESS OTHERWISE SPECIFIED DIMENSIONS ARE IN U.S. INCHES.		
X.XX = .015 X.XXXX = .001		
X.XXX = .010 X.X° = 1°		
NEW AGE ENCLOSURES		
Customer's Part No: 422517		
APPROVAL	BY	DATE
CHECK		
ENG.		
SCALE	AS NOTED	
DRAWN BY	2020-Jul-27	
M BOYER		

<b>NEW AGE ENCLOSURES</b>		
2240 South Thornburg Street Santa Maria, CA. 93455		
ph. (855) 462-3625 fax (805) 595-1024		
www.newageenclosures.com		
<b>MEDIUM AA BATTERY BOX</b>		
<b>SXX-422517-XXX</b>		
SIZE	DRAWING NAME	SHEET
A	422517_RF	4 OF 7
		REV.DOC
		F

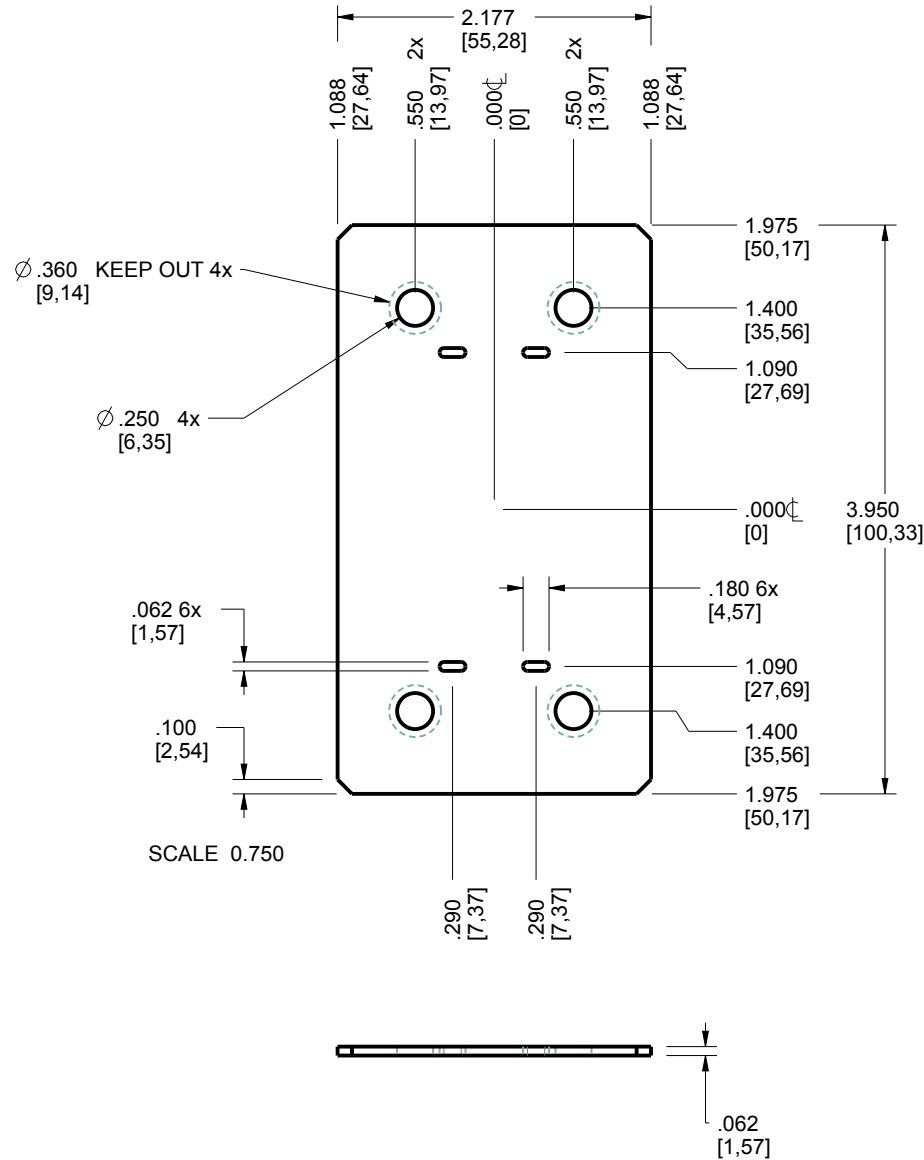
# 422517 WALL HATCH



TOLERANCES: UNLESS OTHERWISE SPECIFIED DIMENSIONS ARE IN U.S. INCHES. X.XX = .015 X.XXXX = .001 X.XXX = .010 X.X° = 1°				<b>NEW AGE ENCLOSURES</b>			
NEW AGE ENCLOSURES				2240 South Thornburg Street Santa Maria, CA. 93455 ph. (855) 462-3625 fax (805) 595-1024 www.newageenclosures.com			
Customer's Part No: 422517				<b>MEDIUM AA BATTERY BOX</b> <b>SXX-422517-XXX</b>			
APPROVAL	BY	DATE		SIZE	DRAWING NAME	SHEET	REV.DOC
CHECK				A	422517_RF	5 OF 7	F
ENG.							
SCALE	AS NOTED						
DRAWN BY	2020-Jul-27						
M BOYER							

# 422517 PCB - CUSTOMER SUPPLIED

PCB SIZES ARE RECOMMENDATIONS ONLY. FINAL  
SIZES AND VERIFICATION OF IT'S FIT ARE THE  
SOLE RESPONSIBILITY OF THE OEM.

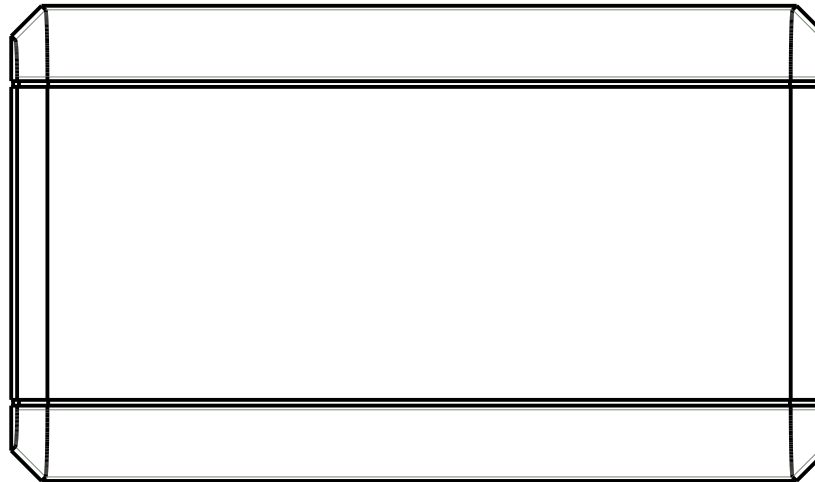
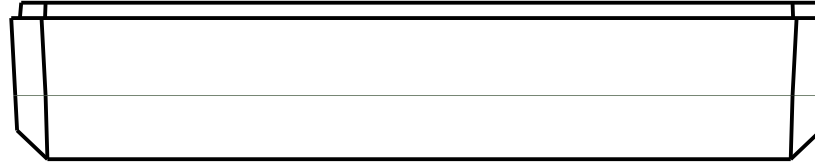


TOLERANCES- UNLESS OTHERWISE SPECIFIED DIMENSIONS ARE IN U.S. INCHES. X.XX = .015 X.XXXX = .001 X.XXX = .010 X.X° = 1°		<b>NEW AGE ENCLOSURES</b>			
Customer's Part No: 422517		2240 South Thornburg Street Santa Maria, CA. 93455 ph. (855) 462-3625 fax (805) 595-1024 www.newageenclosures.com			
APPROVAL	BY	DATE	MEDIUM AA BATTERY BOX SXX-422517-XXX		
CHECK					
ENG.					
SCALE	AS NOTED				
DRAWN BY M BOYER	2020-Jul-27	SIZE A	DRAWING NAME 422517_RF	SHEET 6 OF 7	REV.DOC F

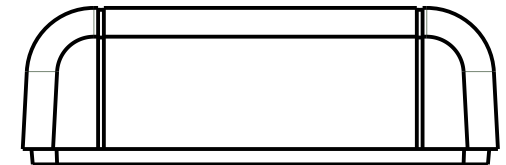
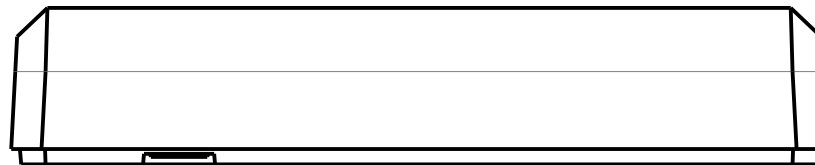
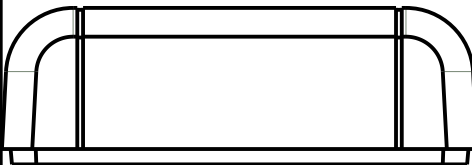
## 422517 2nd OPERATION

NEW AGE ENCLOSURES DELIVERS YOUR ENCLOSURE MARKET-READY WITH IN-HOUSE  
CNC MACHINING, PAD PRINTING, ASSEMBLY, AND FULFILLMENT.  
ALL SURFACES AND AREAS ARE AVAILABLE FOR CNC ALTERATION BY NEW AGE ENCLOSURES  
CALL (855) 462-3625 FOR PRICING AND SCHEDULE.  
THE INSIDE RADIUS OF ANY MACHINED FEATURES SHOULD BE NO SMALLER THAN .031"

422517(x) CONFIGURATIONS		
	-W	-Blank
422517 COVER	1	1
422517 BASE	1	1
422517 HATCH		1
422517 WALL HATCH	1	
#4 HiLo SCREW .375"	4	4



SCALE 1.000



TOLERANCES: UNLESS OTHERWISE SPECIFIED  
DIMENSIONS ARE IN U.S. INCHES.  
X.XX = .015 X.XXXX = .001  
X.XXX = .010 X.X° = 1°

NEW AGE ENCLOSURES

Customer's Part No: 422517

APPROVAL	BY	DATE
CHECK		
ENG.		
SCALE	AS NOTED	
DRAWN BY	M BOYER	
	2020-Jul-27	

**NEW AGE ENCLOSURES**

2240 South Thornburg Street Santa Maria, CA. 93455  
ph. (855) 462-3625 fax (805) 595-1024  
www.newageenclosures.com

**MEDIUM AA BATTERY BOX**  
**SXX-422517-XXX**

SXX-422517-XXX COVER - ABS, BLACK					
STEP NO	DESCRIPTION	CUTTER	FIXTURE	ORIENTATION	PROGRAM
1-C-C1	-	T2 = .062" EM	XXX	-	O -
2-C-C2	-	T2 = .062" EM	XXX	-	O -

SIZE	DRAWING NAME	SHEET	REV.DOC
A	422517_RF	7 OF 7	F

# Mouser Electronics

Authorized Distributor

Click to View Pricing, Inventory, Delivery & Lifecycle Information:

New Age Enclosures:

[S1A-422517](#) [S1A-422517W](#) [S3A-422517](#) [S3A-422517W](#)