



EV3320A-Q-00A

4-Channel, Charge Pump RGB LED Driver with I²C Interface Evaluation Board

DESCRIPTION

The EV3320A-Q-00A evaluation board is designed to demonstrate the capabilities of the MP3320A, a 4-channel, self-adaptive charge pump RGB LED driver that operates from a wide 1.8V to 5.5V input voltage (V_{IN}) range. The maximum current of each channel is up to 51mA, and the maximum output voltage (V_{OUT}) is up to 5.5V.

The MP3320A integrates an I²C interface and supports 16 different I²C addresses, which can be configured by an external resistor. Each channel can be enabled or disabled through the I²C.

The MP3320A employs both separated pulse-width modulation (PWM) dimming and analog

dimming for each LED channel. There is 10-bit PWM dimming and 8-bit analog dimming for each channel. To reduce inrush current and eliminate audible noise during PWM dimming, a phase-shift function is also integrated.

To ensure system reliability, the MP3320A integrates rich protection features, including open LED protection, short LED protection, over-voltage protection (OVP), and over-temperature protection (OTP).

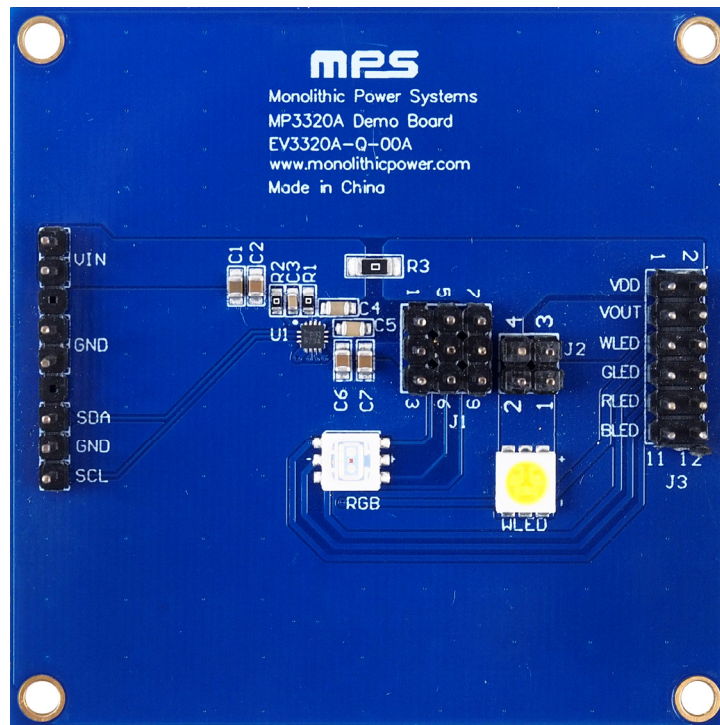
The MP3320A is available in a QFN-14 (2mmx2mm) package. The EV3320A-Q-00A is a fully assembled evaluation board.

PERFORMANCE SUMMARY

Specifications are at $T_A = 25^{\circ}\text{C}$, unless otherwise noted.

Parameters	Conditions	Value
Input voltage (V_{IN}) range		1.8V to 5.5V
Output voltage (V_{OUT})	The over-voltage protection (OVP) threshold is typically 5.5V	Maximum $V_{OUT} < 5.5\text{V}$
LED strings	Each LED channel can be enabled or disabled via the I ² C interface	4 strings
Maximum LED current (I_{LED})	Set ICHx 7:0 = FFh (where x = 1, 2, 3, or 4)	51mA/string

EV3320A-Q-00A EVALUATION BOARD



LxWxH (6.35cmx6.35cmx2cm)

Board Number	MPS IC Number
EV3320A-Q-00A	MP3320AGG

QUICK START GUIDE

1. Connect the anodes of the RGBW LEDs to VOUT or VDD, respectively.
2. Connect the DC power (1.8V to 5.5V) terminals to:
 - a. Positive (+): VIN
 - b. Negative (-): GND
3. Connect the SCL, SDA, and GND pins of the evaluation board to the SCL, SDA, and GND pins of the I²C kit, respectively.
4. Configure the registers via the I²C interface ⁽¹⁾.

Notes:

- 1) Download the MP3320A configuration tool from the MPS website for more details on configuring the registers during evaluation.

EVALUATION BOARD SCHEMATIC

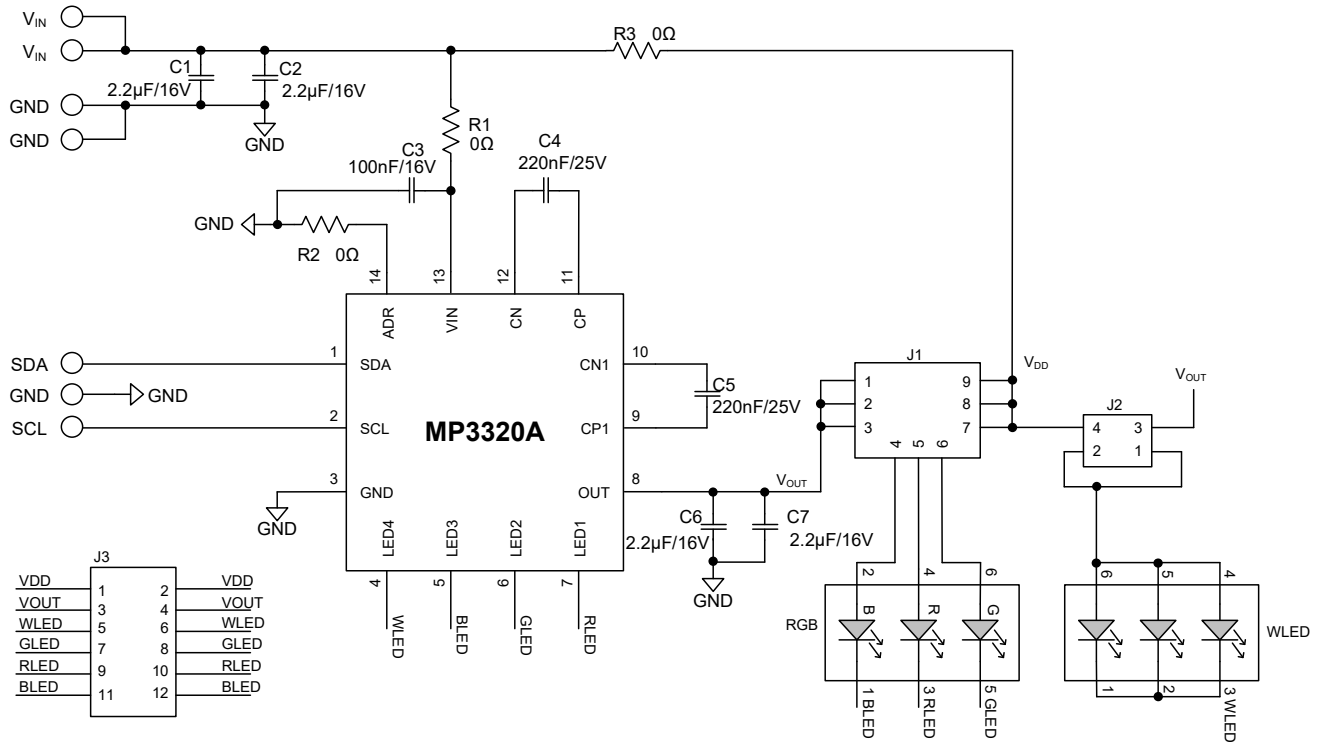


Figure 1: Evaluation Board Schematic

EV3320A-Q-00A BILL OF MATERIALS

Qty	Ref	Value	Description	Package	Manufacturer	Manufacturer PN
4	C1, C2, C6, C7	2.2μF	Ceramic capacitor, 16V, X7R	CAP/0805	Murata	GRM21BR71C225KA12L
1	C3	100nF	Ceramic capacitor, 16V, X7R	CAP/0603	Murata	GRM188R71C104KA01D
2	C4, C5	220nF	Ceramic capacitor, 25V, X7R	CAP/0805	Lion	0805B224K250T
1	R1, R2	0Ω	Film resistor, 1%	RES/0603	Yageo	RC0603FR-070RL
1	R3	0Ω	Film resistor, 1%	RES/1206	Yageo	RC1206FR-070RL
1	RGB	LED	RGB, SMD, 1.5W	SMD	Guangyuan	GL-5050RGB 1.5W
1	WLED	LED	WLED, SMD	SMD	Guangyuan	GL-5050QWC
4	VIN, GND, SDA, SCL	2.54mm	Header	180° 2.54mm	Any	
2	J1, J2	2.54mm	Header	180° 2.54mm	Any	
1	J3	2.54mm	Dual-header	180° 2.54mm	Any	
1	U1	MP3320A	4-channel, charge pump RGB LED driver with I ² C interface, R2	QFN-14 (2mmx2mm)	MPS	MP3320AGG

PCB LAYOUT

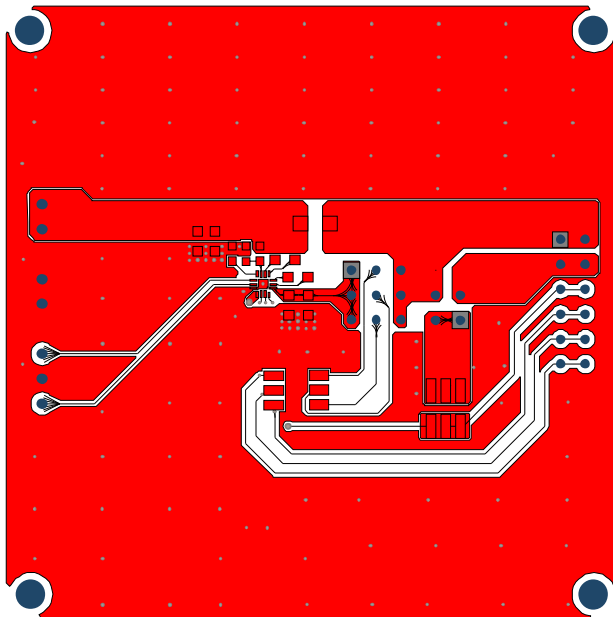


Figure 2: Top Layer

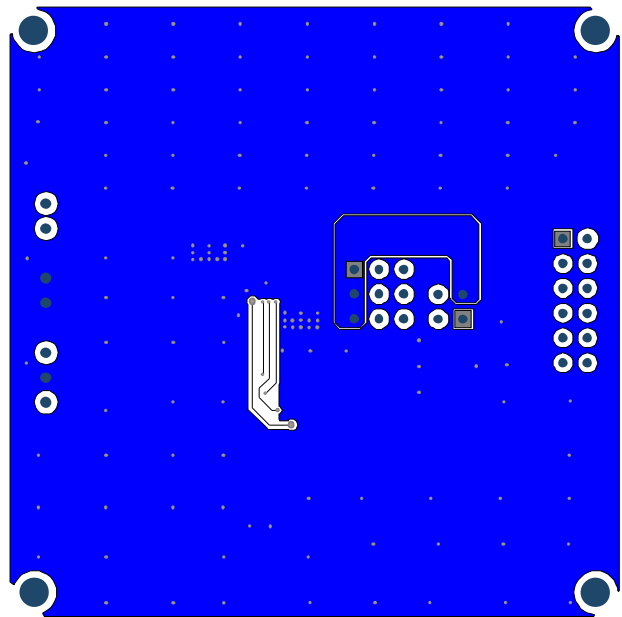


Figure 3: Bottom Layer



REVISION HISTORY

Revision #	Revision Date	Description	Pages Updated
1.0	8/26/2022	Initial Release	-

Notice: The information in this document is subject to change without notice. Please contact MPS for current specifications. Users should warrant and guarantee that third-party Intellectual Property rights are not infringed upon when integrating MPS products into any application. MPS will not assume any legal responsibility for any said applications.

Mouser Electronics

Authorized Distributor

Click to View Pricing, Inventory, Delivery & Lifecycle Information:

[Monolithic Power Systems \(MPS\):](#)

[EV3320A-Q-00A](#)