

## Smart DOF 4 Click



PID: MIKROE-6369

Smart DOF 4 Click is a compact add-on board for high-precision motion tracking and contextual sensing. This board features the BNO085, a 9-axis IMU System in Package (SiP) from CEVA, combining an accelerometer, gyroscope, and geomagnetic sensor with a 32-bit microcontroller running CEVA's SH-2 firmware. The board provides real-time, calibrated 3D orientation, linear acceleration, and angular velocity while dynamically compensating for temperature changes and sensor aging. It supports I2C and SPI interfaces, features advanced MotionEngine™ technology for gesture detection and activity monitoring, and includes 'Always-On' capabilities like step counting and stability detection. Smart DOF 4 Click is ideal for AR/VR head trackers, robotics, IoT devices, and other motion-controlled applications.

### How does it work?

Smart DOF 4 Click is based on the BNO085, a 9-axis IMU System in Package (SiP) from CEVA, designed to deliver high-precision motion tracking and contextual sensing for advanced applications. The BNO085 integrates a triaxial 12-bit accelerometer with a range of  $\pm 8g$ , a triaxial 16-bit gyroscope with a range of  $\pm 2000$  degrees per second, a triaxial geomagnetic sensor, and a 32-bit ARM® Cortex™-M0+ microcontroller running CEVA's SH-2 firmware. This IMU chip provides real-time, calibrated 3D orientation, heading, linear acceleration, and angular velocity, making it ideal for various motion-based solutions in consumer electronics (AR/VR head trackers), robotics, IoT devices, and beyond.

Mikroe produces entire development toolchains for all major microcontroller architectures.

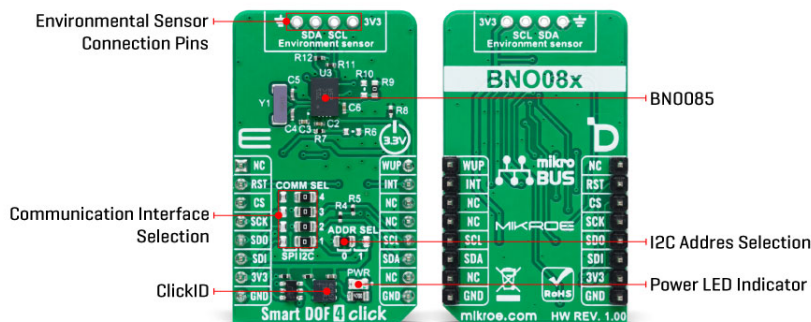
Committed to excellency, we are dedicated to helping engineers bring the project development up to speed and achieve outstanding results.



ISO 27001: 2013 certification of informational security management system.  
ISO 14001: 2015 certification of environmental management system.  
OHSAS 18001: 2008 certification of occupational health and safety management system.



ISO 9001: 2015 certification of quality management system (QMS).



The BNO085 excels in its ability to dynamically calibrate sensor data, compensating for environmental factors like temperature changes and sensor aging. It also supports various 3D orientation outputs, including rotation vectors, linear acceleration, and gravity, ensuring precise performance across diverse scenarios. The core of this SiP is the SH-2 software, featuring CEVA's MotionEngine™ technology. MotionEngine transforms raw motion data from MEMS sensors into accurate, actionable motion outputs, supporting applications like gesture detection, activity monitoring, and dynamic motion control. With 'Always-On' capabilities, it provides features such as step counting, stability detection, tap detection, and gesture recognition. The SH-2 firmware is Android-compatible, supporting sensor types defined in Android 4.4 KitKat.

Sensor data are accessed through the I2C or SPI interface, with a maximum frequency of 400kHz for I2C and 3MHz for SPI communication. The selection is made by positioning SMD jumpers labeled COMM SEL appropriately. Note that all the jumpers' positions must be on the same side, or the Click board™ may become unresponsive. While the I2C interface is selected, the BNO085 allows the least significant bit (LSB) of its I2C address to be chosen using the SMD jumper labeled ADDR SEL.

This board also uses additional pins from the mikroBUS™ socket to enhance functionality. The WUP pin wakes the processor from sleep mode during SPI communication, ensuring efficient power management. The RST pin provides a reset function for the sensor, activated by a LOW logic level, while the INT pin acts as an interrupt line, signaling various events detected during operation. Additionally, the BNO085 supports the integration of environmental sensors, such as pressure or ambient light sensors, via a secondary I2C interface accessible through an unsoldered header at the top of the board.

This Click board™ can be operated only with a 3.3V logic voltage level. The board must perform appropriate logic voltage level conversion before using MCUs with different logic levels. It also comes equipped with a library containing functions and example code that can be used as a reference for further development.

## Specifications

Type	Motion
Applications	Ideal for various motion-based solutions in consumer electronics (AR/VR head trackers), robotics, IoT devices, and more

Mikroe produces entire development toolchains for all major microcontroller architectures.

Committed to excellency, we are dedicated to helping engineers bring the project development up to speed and achieve outstanding results.



ISO 27001: 2013 certification of informational security management system.  
ISO 14001: 2015 certification of environmental management system.  
OHSAS 18001: 2008 certification of occupational health and safety management system.



ISO 9001: 2015 certification of quality management system (QMS).

On-board modules	BNO085 - 9-Axis IMU System in Package (SiP) from CEVA
Key Features	Triaxial 12-bit accelerometer ( $\pm 8g$ ), 16-bit gyroscope ( $\pm 2000^\circ/s$ ), and a geomagnetic sensor system, based on 32-bit ARM® Cortex™-M0+ microcontroller running CEVA's SH-2 firmware with MotionEngine™ technology, real-time outputs with dynamic calibration, always-on features like step counter, stability detector, tap detection, and gesture recognition, and more
Interface	I2C, SPI
Feature	ClickID
Compatibility	mikroBUS™
Click board size	M (42.9 x 25.4 mm)
Input Voltage	3.3V

## Pinout diagram

This table shows how the pinout on Smart DOF 4 Click corresponds to the pinout on the mikroBUS™ socket (the latter shown in the two middle columns).

Notes	Pin	mikroBUS				Pin	Notes
	NC	1	AN	PWM	16	<b>WUP</b>	SPI Wake-Up
Reset / ID SEL	<b>RST</b>	2	RST	INT	15	<b>INT</b>	Interrupt
SPI Select / ID COMM	<b>CS</b>	3	CS	RX	14	NC	
SPI Clock	<b>SCK</b>	4	SCK	TX	13	NC	
SPI Data OUT	<b>SDO</b>	5	MISO	SCL	12	<b>SCL</b>	I2C Clock
SPI Data IN	<b>SDI</b>	6	MOSI	SDA	11	<b>SDA</b>	I2C Data
Power Supply	<b>3.3V</b>	7	3.3V	5V	10	NC	
Ground	<b>GND</b>	8	GND	GND	9	<b>GND</b>	Ground

## Onboard settings and indicators

Label	Name	Default	Description
LD1	PWR	-	Power LED Indicator
JP1-JP4	COMM SEL	Left	Communication Interface Selection SPI/I2C: Left position SPI, Right position I2C
JP5	ADDR SEL	Left	I2C Address Selection 0/1: Left position 0, Right position 1

## Smart DOF 4 Click electrical specifications

Description	Min	Typ	Max	Unit
Supply Voltage	-	3.3	-	V
Accelerometer Range	-8	-	+8	g

Mikroe produces entire development toolchains for all major microcontroller architectures.

Committed to excellency, we are dedicated to helping engineers bring the project development up to speed and achieve outstanding results.



ISO 27001: 2013 certification of informational security management system.  
ISO 14001: 2015 certification of environmental management system.  
OHSAS 18001: 2008 certification of occupational health and safety management system.



ISO 9001: 2015 certification of quality management system (QMS).

Accelerometer Resolution	-	12	-	bit
Gyroscope Range	-2000	-	+2000	dps
Gyroscope Resolution	-	16	-	bit

## Software Support

We provide a library for the Smart DOF 4 Click as well as a demo application (example), developed using MIKROE [compilers](#). The demo can run on all the main MIKROE [development boards](#).

Package can be downloaded/installed directly from NECTO Studio Package Manager (recommended), downloaded from our [LibStock™](#) or found on [MIKROE github account](#).

## Library Description

This library contains API for Smart DOF 4 Click driver.

Key functions

- smartdof4\_read\_pid This function reads the product ID information.
- smartdof4\_feature\_set This function sets a full feature report.
- smartdof4\_read\_data This function reads the accelerometer (g), gyroscope (dps), and magnetometer (uT) 3-axis data from input report.

## Example Description

This example demonstrates the use of Smart DOF 4 Click by reading the accelerometer, gyroscope, and magnetometer data measurements.

The full application code, and ready to use projects can be installed directly from NECTO Studio Package Manager (recommended), downloaded from our [LibStock™](#) or found on [MIKROE github account](#).

Other MIKROE Libraries used in the example:

- MikroSDK.Board
- MikroSDK.Log
- Click.SmartDOF4

## Additional notes and informations

Depending on the development board you are using, you may need [USB UART click](#), [USB UART 2 Click](#) or [RS232 Click](#) to connect to your PC, for development systems with no UART to USB interface available on the board. UART terminal is available in all MIKROE [compilers](#).

## mikroSDK

This Click board™ is supported with [mikroSDK](#) - MIKROE Software Development Kit. To ensure proper operation of mikroSDK compliant Click board™ demo applications, mikroSDK should be

Mikroe produces entire development toolchains for all major microcontroller architectures.

Committed to excellency, we are dedicated to helping engineers bring the project development up to speed and achieve outstanding results.



ISO 27001: 2013 certification of informational security management system.  
ISO 14001: 2015 certification of environmental management system.  
OHSAS 18001: 2008 certification of occupational health and safety management system.



ISO 9001: 2015 certification of quality management system (QMS).

downloaded from the [LibStock](#) and installed for the compiler you are using.

For more information about mikroSDK, visit the [official page](#).

## Resources

[mikroBUS™](#)

[mikroSDK](#)

[Click board™ Catalog](#)

[Click boards™](#)

[ClickID](#)

## Downloads

[Smart DOF 4 click example on Libstock](#)

[Smart DOF 4 click 2D and 3D files v100](#)

[BNO085 datasheet](#)

[Smart DOF 4 click schematic v100](#)

Mikroe produces entire development toolchains for all major microcontroller architectures.

Committed to excellency, we are dedicated to helping engineers bring the project development up to speed and achieve outstanding results.



ISO 27001: 2013 certification of informational security management system.  
ISO 14001: 2015 certification of environmental management system.  
OHSAS 18001: 2008 certification of occupational health and safety management system.



ISO 9001: 2015 certification of quality management system (QMS).

# Mouser Electronics

Authorized Distributor

Click to View Pricing, Inventory, Delivery & Lifecycle Information:

[Mikroe:](#)

[MIKROE-6369](#)