

10AQS/1SS+AQW

Front panel sealing • variable heights



DISTINCTIVE FEATURES

Front panel sealing to IP67

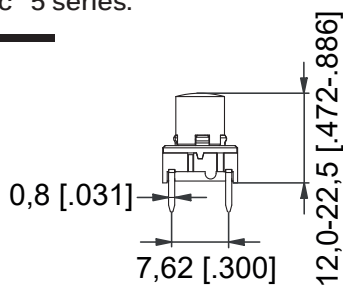
Excellent illumination with 10AQS

Variable total heights

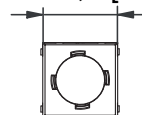


SWITCH SPECIFICATIONS : see Multimec™ 5 series.

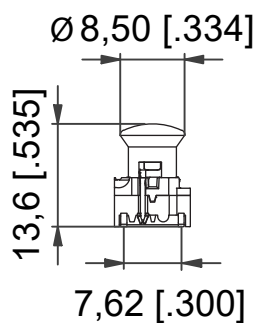
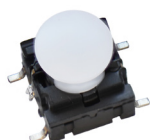
5E+1SS - TH



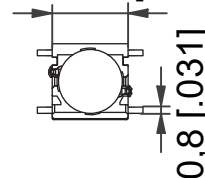
Max 10,3 [.406]



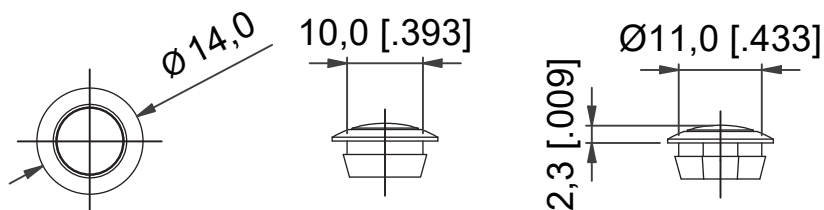
5G+10AQS - SMD W/LED



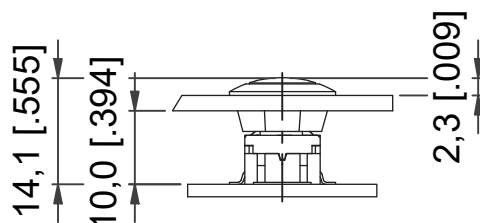
Max 10,3 [.406]



AQW



5G+10AQS+AQW



The company reserves the right to change specifications without notice. All tolerance if not otherwise specified $\pm 0.2\text{mm}$.

10AQS/1SS+AQW

Front panel sealing • variable heights



GENERAL SPECIFICATIONS

- Front panel sealing: IP67 to IEC 60529
- Mechanical lifecycle (sealing) : 500,000 activations
- Recommended panel thickness: 2.0 mm



MATERIALS

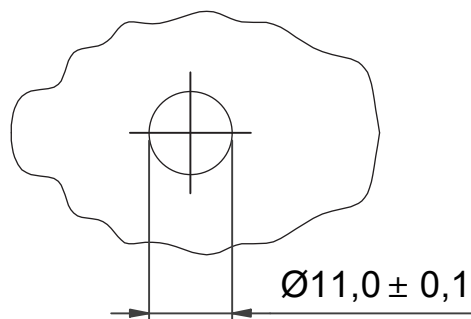
- Sealing: silicone
- 10AQS cap: polycarbonate (PC) UL94H2
- 1SS cap: polyamide UL94V2

DISCLAIMER:

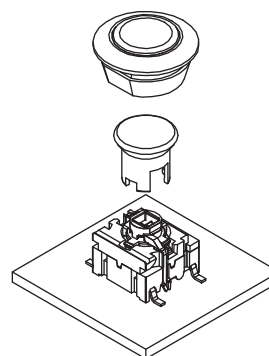
AQW sealing is produced in silicone. This material is not suitable for all industries. Please contact us for a check of chemical resistance for your specific environment.



PANEL CUT-OUT



ASSEMBLY



NOTE:

Lowest behind the panel height possible with this solution is 5E+1SS09-12.0+AQW that has the behind the panel height of 9.0 mm.

10AQS/1SS+AQW

Front panel sealing • variable heights



BUILD YOUR PART NUMBER

ILLUMINATED

SERIES				10AQS			AQW		
5G				CAP	COLOR		SEALING	OUTER	INNER
					16	Frosted white		09	16
								black	frosted white
	MOUNTING		LED						
	TH9	Through-hole	02	blue	82	red			
	SH9	Surface mount	22	green	2242	green/yellow			
			29	high intensity green	8222	red/green			
			42	yellow	8242	red/yellow			
			61	white					
		ACTUATION FORCE							
		20	2.0 N						
		35	3.5 N						
		65	6.5 N						
		20Q	2.0 N quiet						

NON-ILLUMINATED

SERIES				1SS			AQW		
5E				CAP	COLOR		SEALING	OUTER	INNER
					09	black		09	02
								black	green
	MOUNTING								03
	TH9	Through-hole							grey
	SH9	Surface mount							08
									red
									36
									signal white
		ACTUATION FORCE							
		20	2.0 N						
		35	3.5 N						
		65	6.5 N						
		20Q	2.0 N quiet						
					HEIGHT				
					12.0	12 mm			
					15.0	15 mm			
					16.0	16 mm			
					19.0	19 mm			
					22.5	22.5 mm			



ABOUT THIS SERIES

- Notice : If an application requires both non-illuminated and illuminated AQW solution, 10AQS cap can be used for both to ensure the same behind the panel height.
- Notice : Switches, caps and sealings are ordered separately.

Mouser Electronics

Authorized Distributor

Click to View Pricing, Inventory, Delivery & Lifecycle Information:

[Apem:](#)

[10AQS16](#) [AQW0902](#) [AQW0908](#) [AQW0916](#)