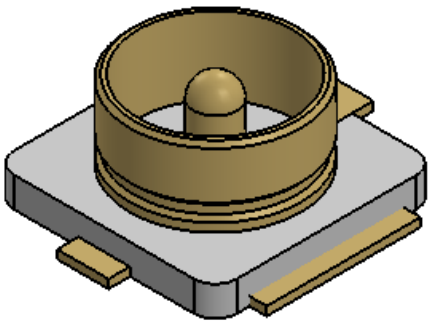


REVISIONS			
REV	DESCRIPTION	DATE	APPV
A	INITIAL RELEASE OF LINX INTERNAL DRAWING	15-MAY-17	CLL
B	UPDATED TITLE; ADDED P/N TABLE AND SECOND SHEET SHOWING TAPE AND REEL INFORMATION	10-JUL-17	CLL

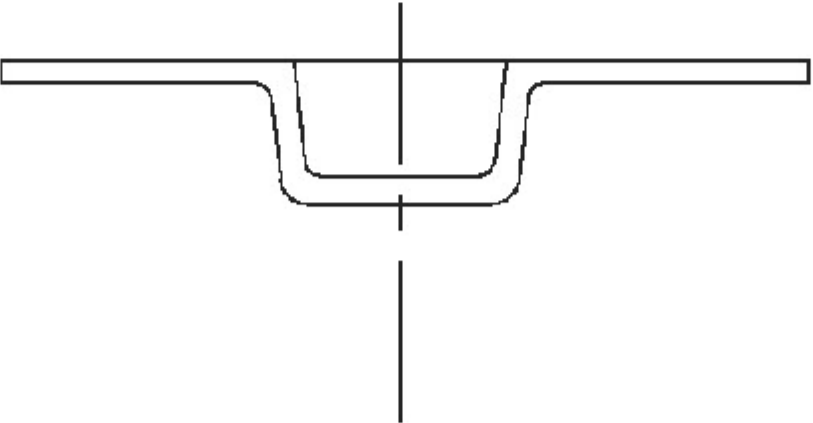
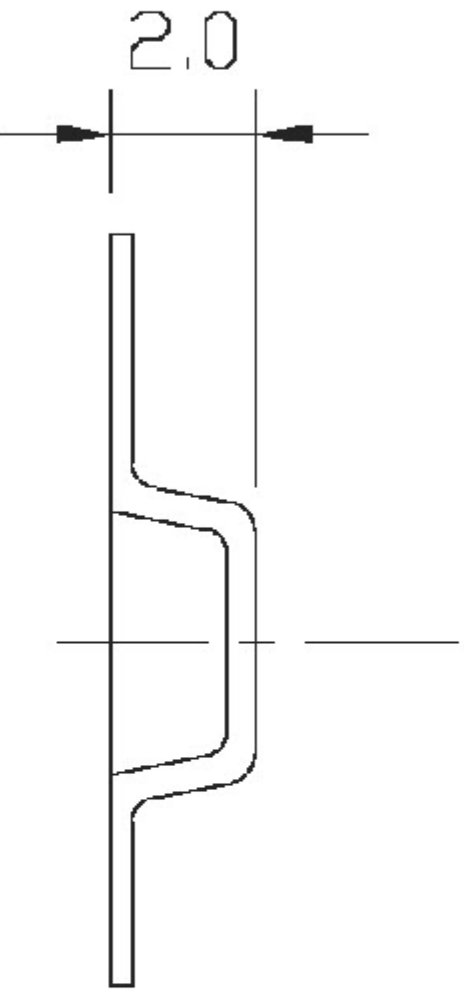
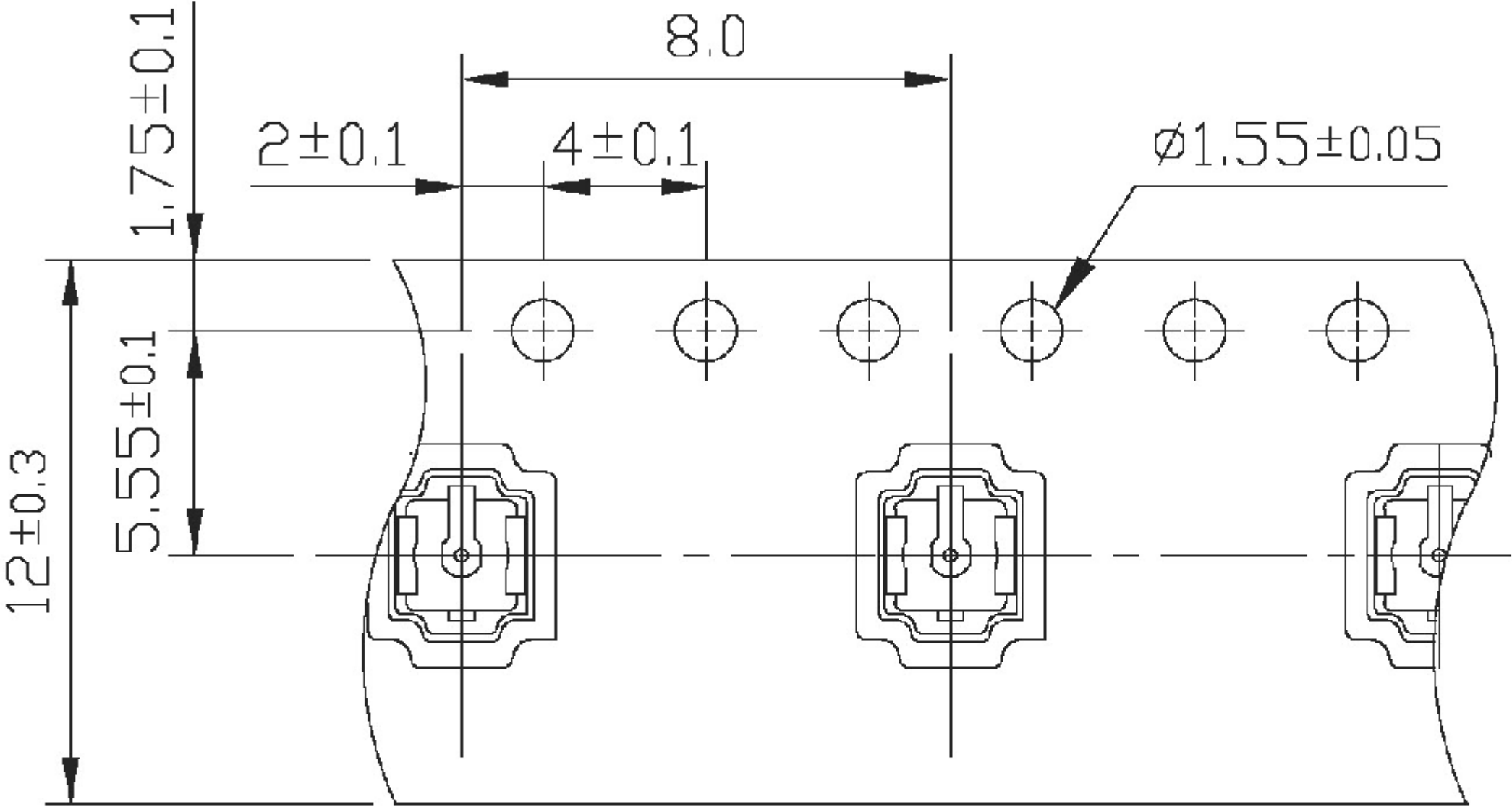


- NOTES: (UNLESS OTHERWISE SPECIFIED)
1. ALL DIMENSIONS ARE IN INCHES [mm].
 2. DIMENSIONS APPLY AFTER FINISHING.
 3. MANUFACTURE TO BE COMPLIANT WITH EU RoHS DIRECTIVE,USE MATERIALS THAT DO NOT CONTAIN REACH SUBSTANCES OF VERY HIGH CONCERN >1000ppm, AND USE DRC CONFLICT-FREE SOURCED MATERIALS.
 4. SAFETY BREAK ALL SHARP CORNERS AND EDGES .02 MAXIMUM.
 5. COMPATIBLE WITH IPEX MHF, MHFII AND HIROSE U.FL.
 6. HOUSING: LCP, UL94V-0, WHITE
 7. CONTACT: BRASS, GOLD PLATING
 8. GROUND CONTACT: PHOSPHOR BRONZE, GOLD PLATING.
 9. ELECTRICAL SPECIFICATIONS
IMPEDANCE: 50 OHM
FREQUENCY: 0 - 6GHz
OPERATING TEMPERATURE: -40°C TO +90°C.

PART NUMBER	PACKAGING
CONUFL001-SMD	BULK
CONUFL001-SMD-T	TAPE & REEL

WARNING: THIS DRAWING CONTAINS PROPRIETARY INFORMATION THAT IS THE SOLE PROPERTY OF LINX TECHNOLOGIES, AND SHALL BE TREATED AS SUCH. NO DISCLOSURE OR REPRODUCTION OF THIS DOCUMENT IS PERMITTED, IN WHOLE OR IN PART, WITHOUT THE EXPRESS WRITTEN PERMISSION OF LINX TECHNOLOGIES OR ITS DESIGNATED AGENTS.		
MATERIAL:	INTERPRET DIMENSIONS AND TOLERANCES PER ASME Y14.5.	PROJECTION:
	SURFACE FINISH: $\sqrt{}$ ANGLES: $\pm 1^\circ$	
	TOLERANCES: .X $\pm .1$.XX $\pm .01$.XXX $\pm .005$	
FINISH:	DRAWN: B.MURPHY DT: 10-MAY-17	
	ENGR:D.VARATHARAJAN DT: 15-MAY-17	

Linx 159 ORT LANE MERLIN, OR 97532	
TITLE: MICRO COAXIAL SURFACE MOUNT CONNECTOR	
SIZE B	DWG. NO. CONUFL001-SMD-*
REV B	
SCALE: 16:1	SHEET 1 OF 2



- NOTES:
1. ALL DIMENSIONS ARE IN MILLIMETERS.
 2. TOLERANCES (UNLESS OTHERWISE SPECIFIED):
 - .X $\pm 0.1\text{mm}$
 - .XX $\pm 0.05\text{mm}$
 - .XXX $\pm 0.03\text{mm}$

SIZE	DWG. NO.	REV
A	CONUFL001-SMD-T	B
SCALE: 16:1	DO NOT SCALE DRAWING	SHEET 2 OF 2

Mouser Electronics

Authorized Distributor

Click to View Pricing, Inventory, Delivery & Lifecycle Information:

[Linx Technologies:](#)

[CONUFL001-SMD](#) [CONUFL001-SMD-T](#)