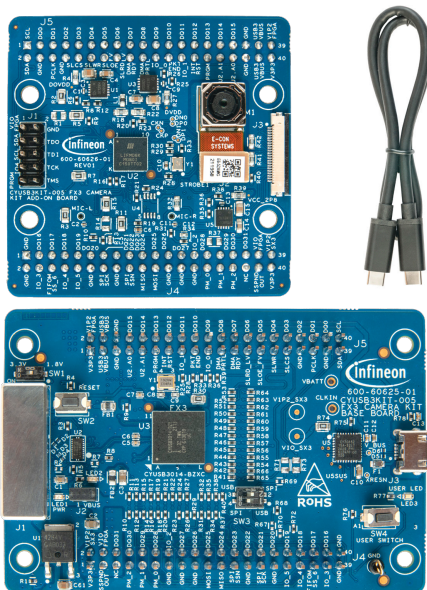
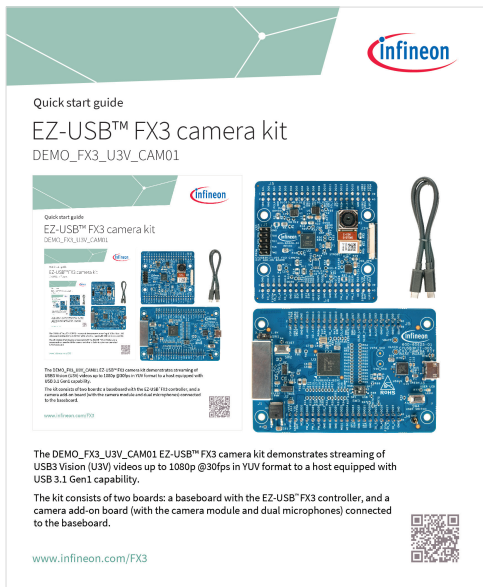


Quick start guide

EZ-USB™ FX3 camera kit

DEMO_FX3_U3V_CAM01



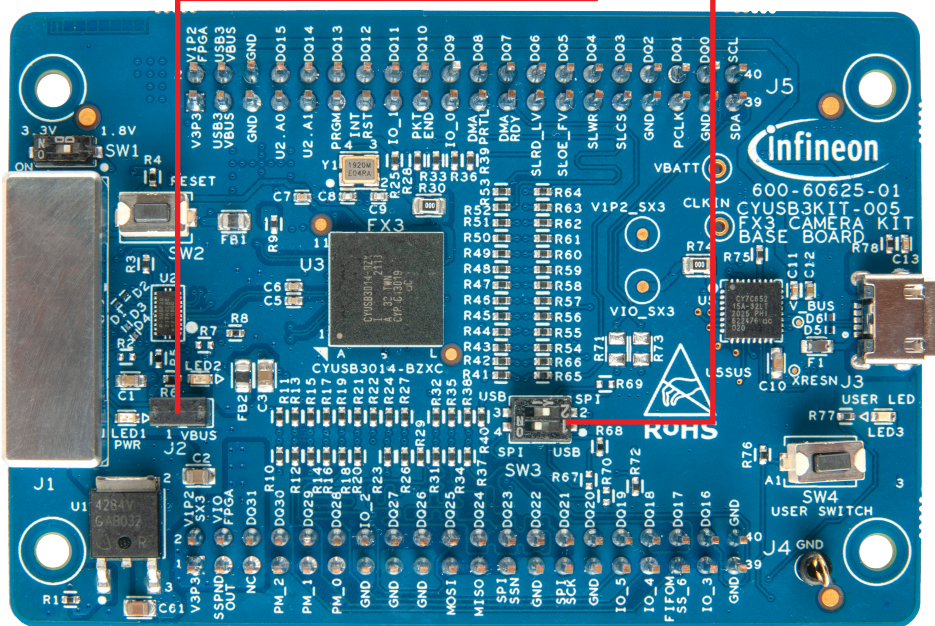
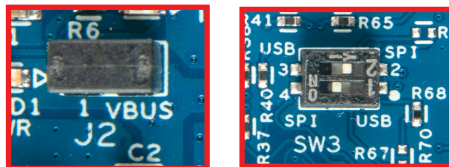
The DEMO_FX3_U3V_CAM01 EZ-USB™ FX3 camera kit demonstrates streaming of USB3 Vision (U3V) videos up to 1080p @30fps in YUV format to a host equipped with USB 3.1 Gen1 capability.

The kit consists of two boards: a baseboard with the EZ-USB™ FX3 controller, and a camera add-on board (with the camera module and dual microphones) connected to the baseboard.



Before you start

1. Ensure that you have a PC with the following:
 - Windows 10 with USB 3.1 Gen 1
 - 1.0 GHz or higher CPU clock
2. Download and install Pleora eBUS Player:
 - For <https://tinyurl.com/Window64Bit>
 - For <https://tinyurl.com/Window32Bit>
3. Set the kit baseboard to boot from SPI flash (SW3 position 2 and 4).
4. Ensure that the jumper shunt on J2 is installed.



SW3 in SPI mode and jumper shunt on J2 installed

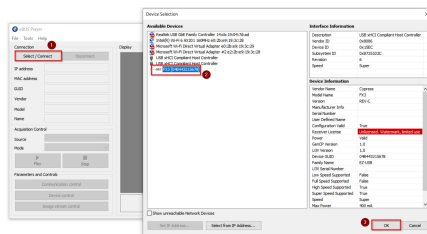
Step 1: Hardware setup

1. Connect the kit to the PC using the Super Speed USB-C cable provided with the kit. Observe that the Power ON LED (LED1) glows green.

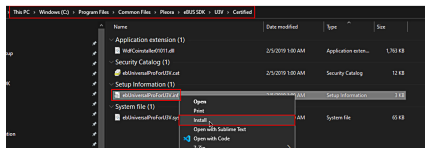
Step 2: Select USB3 Vision device in eBUS Player

1. On eBUS Player, click **Select/Connect**.
2. Check if FX3 is detected.
3. Click **OK**.

Note: If FX3 is not detected, go to “C:\Program Files\Common Files\Pleora\eBUS SDK\U3V\Certified” and install the U3V driver.



Selecting USB3 Vision device in eBUS Player application

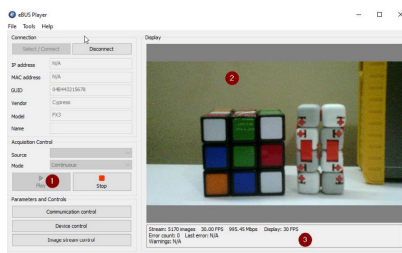


Installing driver for USB3 Vision player (eBUS player)

Step 3: Stream video from kit camera

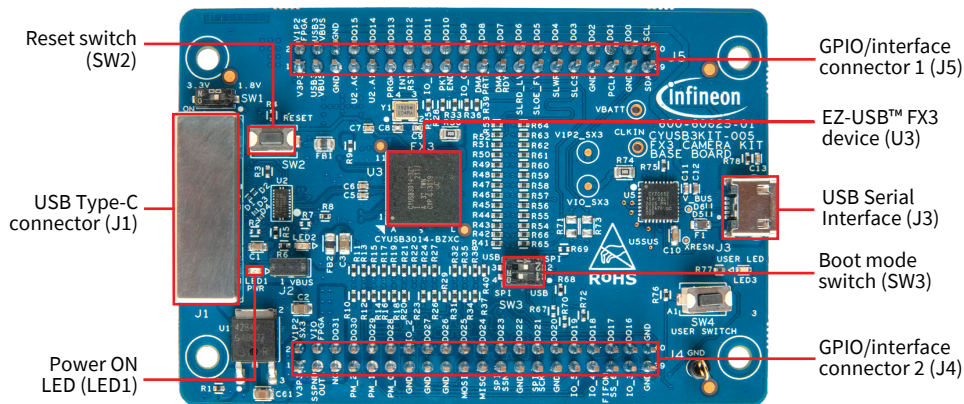
Position the kit's onboard camera module towards the object to be captured/streamed and remove the sticker from the camera.

1. Click **Play**.
2. Observe the streaming video in the display pane.
3. View the streaming statistics in the status pane below the display pane.

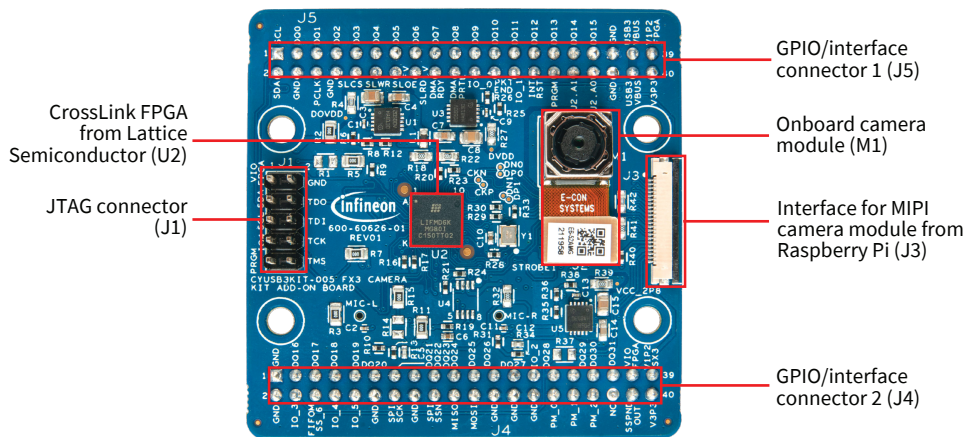


Video stream

DEMO_FX3_U3V_CAM01 baseboard



DEMO_FX3_U3V_CAM01 add-on board



See the kit guide available at the [kit website](#) for details.

Mouser Electronics

Authorized Distributor

Click to View Pricing, Inventory, Delivery & Lifecycle Information:

[Infineon:](#)

[DEMOFX3U3VCAM01TOBO1](#)