

Please note that Cypress is an Infineon Technologies Company.

The document following this cover page is marked as “Cypress” document as this is the company that originally developed the product. Please note that Infineon will continue to offer the product to new and existing customers as part of the Infineon product portfolio.

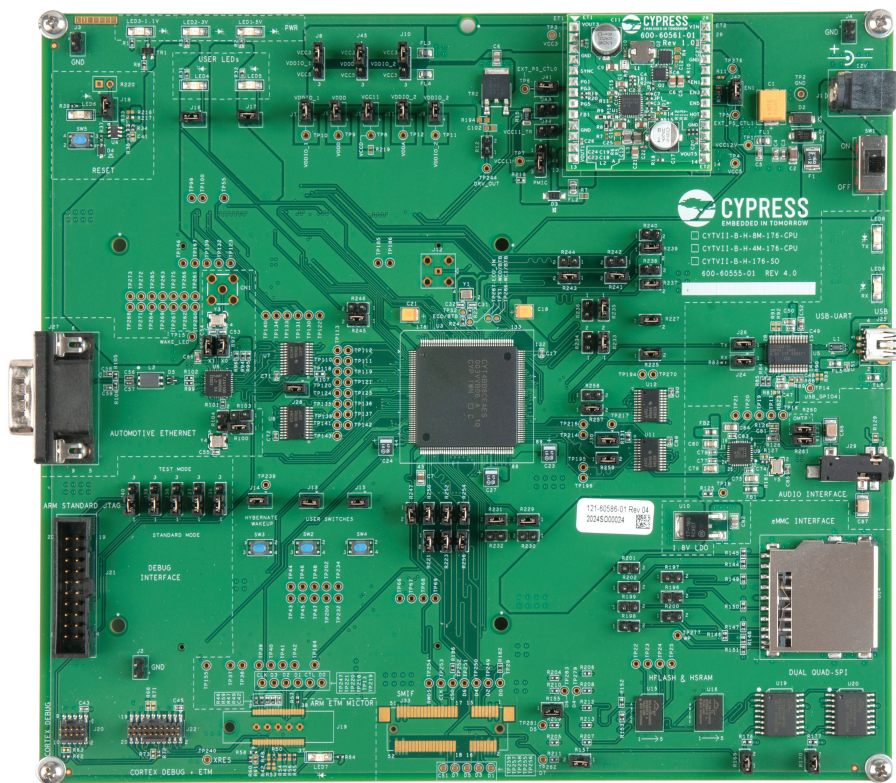
Continuity of document content

The fact that Infineon offers the following product as part of the Infineon product portfolio does not lead to any changes to this document. Future revisions will occur when appropriate, and any changes will be set out on the document history page.

Continuity of ordering part numbers

Infineon continues to support existing part numbers. Please continue to use the ordering part numbers listed in the datasheet for ordering.

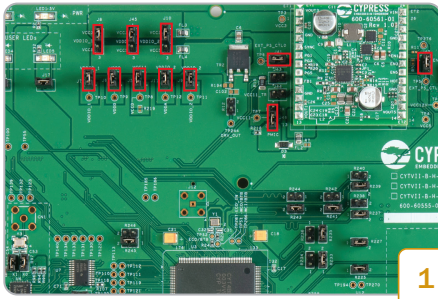
Traveo™ II CPU board



Kit contents:

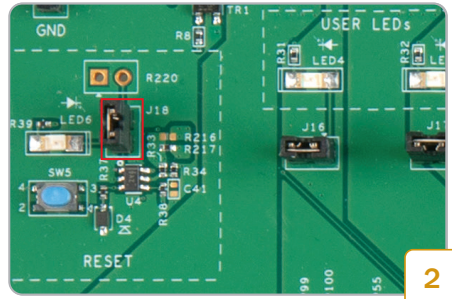
1. Traveo™ II CPU board (CYTVII-B-H-4M-176-CPU)
2. Type-B Mini USB cable
3. 12V AC-DC universal power adapter
4. Quick start guide (this document)
5. Screws and spacers

Traveo™ II CPU board



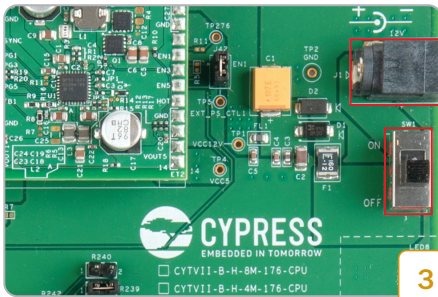
1

- Ensure that jumpers J7, J6, J5, J11, J9, J41, J42 are inserted. Ensure that jumpers J8, J45, J10 are in 1-2 position and J46 is in 2-3 position.



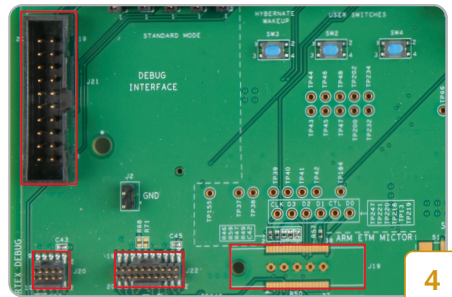
2

- Ensure that the MCU reset controller jumper (J18) is inserted.



3

- Connect the 12V adapter to power jack (J1). Toggle the switch SW1 to the ON position to power up the board.
- Use an appropriate IDE on a PC to load a firmware SREC file into the device flash. The LED blink firmware is available in the release package.



4

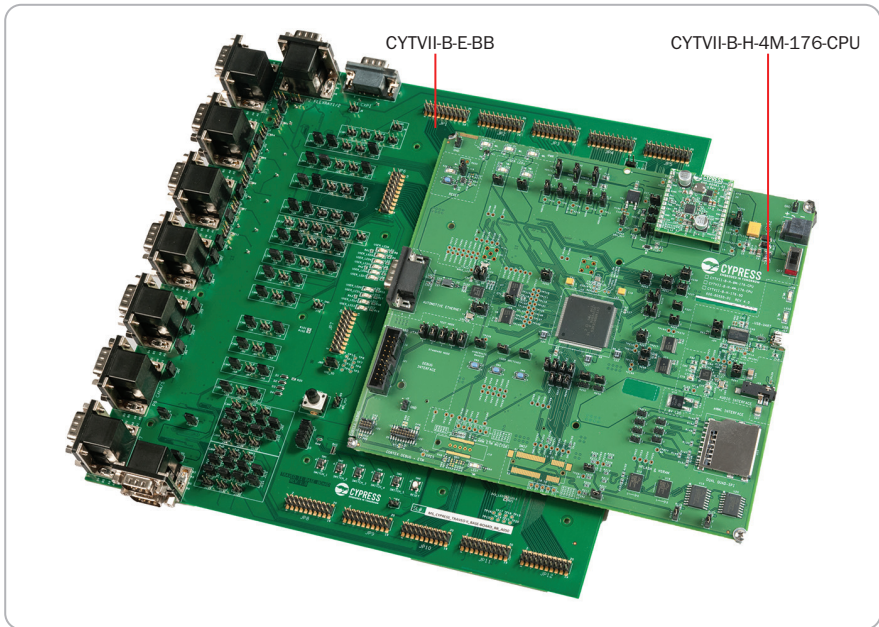
- Connect an appropriate programming tool (IAR/GHS) to one of the debugging interfaces (J21, J20, J22, J19).

Traveo™ II CPU board

Instructions:

Use the board in conjunction with the body controller baseboard (CYTVII-B-E-BB) to evaluate all features of the Traveo™ II MCU. In standalone mode, only limited features of the MCU are available.

See the CPU board user guide for details.

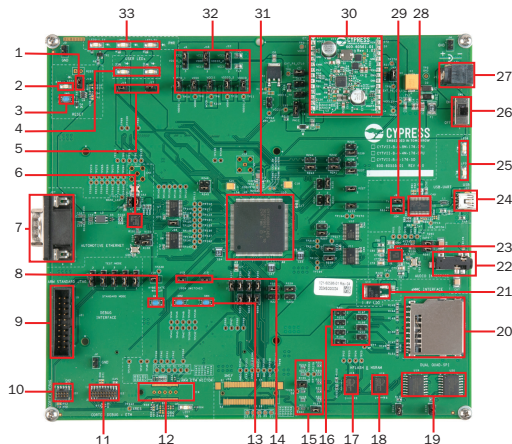


Go to the customer support portal ([cypress.com/support](https://www.cypress.com/support)) to know more about the baseboard and compatibility, and for the following resources:

- User guide
- Schematic
- Sample driver library (SDL)
- Software examples

Traveo™ II CPU board

Traveo™ II CPU board details



- | | |
|--|---|
| 1. MCU reset controller jumper – J18 | 17. 512Mb HyperFlash™ memory (S26KL512) – U15 |
| 2. MCU reset LED – LED6 | 18. 64Mb HyperRAM™ DRAM (S27KL064) – U16 |
| 3. MCU reset button – SW5 | 19. 256Mb Quad-SPI flash (FL256Sx) – U19, U20 |
| 4. User LEDs – LED4 & LED5 | 20. SDHC card connector – U14 |
| 5. Jumpers for user LEDs – J16 & J17 | 21. LDO for audio 1.8V (NCP1117) – U10 |
| 6. Automotive Ethernet controller (TJA1100) – U6 | 22. 3.5mm audio jack – J29 |
| 7. Automotive Ethernet connector – J27 | 23. Audio codec (TLV320AIC26) – U9 |
| 8. Hibernate mode switch – SW3 | 24. Mini-B USB connector – J25 |
| 9. IDC Arm® standard JTAG 20-Pin connector – J21 | 25. UART Rx and Tx LEDs – LED8, LED9 |
| 10. Arm® Cortex® debug MIPI-10 connector – J20 | 26. CPU board power switch – SW1 |
| 11. Arm® Cortex® debug ETM MIPI-20 connector – J22 | 27. Power connector – J1 |
| 12. Arm® ETM Mictor-38 connector – J19 | 28. USB serial controller (CY7C65213) – U5 |
| 13. User switches – SW2 & SW4 | 29. UART Rx and Tx jumpers – J24, J26 |
| 14. Jumpers for user switches – J13 & J15 | 30. PMIC controller board – ET1, ET2 |
| 15. Jumpers for SMIF – R155, R157, R169, R170 | 31. Traveo™ II TVII-B-H-4M device (CYT4BB) – U3 |
| 16. Jumpers for SDHC – R197 to R202 | 32. MCU power jumpers – J5 to J11, J45 |
| | 33. MCU power LEDs – LED1, LED2, LED3 |

Mouser Electronics

Authorized Distributor

Click to View Pricing, Inventory, Delivery & Lifecycle Information:

[Infineon:](#)

[CYTVII-B-H-4M-176-CPU](#)