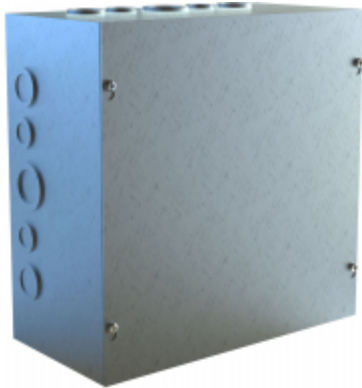




Quality Products. Service Excellence.

Type 1 Unpainted Galvanized Steel Junction Box *CSKOG Series*

Screw Cover and w/ Knockouts



Application

- Designed for general purpose indoor commercial use as a junction, pull or switch box.

Standards

- UL-50 Type 1
- CSA Type 1
- Complies with:
 - NEMA Type 1
 - IEC 60529, IP20

Construction

- Formed and spot welded from 16 gauge G90 steel.
- Flat steel covers fastened with plated steel screws.
- Keyhole slots permit cover to be lifted off without removing screws entirely.
- Easily removed knockouts on all 4 sides (see drawings for sizes and locations).
- Through holes in back for wall mounting.
- Grounding location embossed in body.

Finish

- Enclosure and cover are unpainted galvanized steel.

Accessories

- CS Perforated Panels



New and improved PDF part drawing files with more detail now available.

Click part number in table below to access PDF, DXF, and STEP files.

Part No.	Enclosure		
	H	W	D
CSKOG664	6.00	6.00	4.00
CSKOG884	8.00	8.00	4.00
CSKOG10104	10.00	10.00	4.00
CSKOG12124	12.00	12.00	4.00
CSKOG18124	18.00	12.00	4.00
CSKOG666	6.00	6.00	6.00
CSKOG886	8.00	8.00	6.00
CSKOG10106	10.00	10.00	6.00

Part No.	Enclosure		
	H	W	D
CSKOG12126	12.00	12.00	6.00
CSKOG16166	16.00	16.00	6.00
CSKOG16168	16.00	16.00	8.00
CSKOG12128	12.00	12.00	8.00

Tags: **CSKO, commercial, junction box, unpainted, knockouts, wallmount, type 1, NEMA 1, steel, keyhole slot, screw cover**

Data subject to change without notice

© 2025. Hammond Manufacturing Ltd. All rights reserved.

Mouser Electronics

Authorized Distributor

Click to View Pricing, Inventory, Delivery & Lifecycle Information:

[Hammond:](#)

[CSKOG10104](#) [CSKOG10106](#) [CSKOG12124](#) [CSKOG12126](#) [CSKOG12128](#) [CSKOG664](#) [CSKOG666](#) [CSKOG884](#)
[CSKOG886](#) [CSKOG16166](#) [CSKOG16168](#) [CSKOG18124](#)