



LTE ROUTER
FOR BUSINESS
CONTINUITY



DIGI 6350-SR

Versatile high-performance LTE router for critical networking applications with a dedicated serial port and optional Wi-Fi

Virtually eliminate connectivity downtime with the Digi® 6350-SR LTE router. It's a compact router - an affordable high-performance device that features multiple WAN options for both load balancing and failover. Connect to mobile networks using the 4G LTE standard that best suits your use case. Larger locations or data-intensive applications can utilize the CAT 6 version of the Digi® CORE 1002-CM modem for the fastest cellular speeds available. Or, opt for the cost-saving deployment of a standard CAT 4 connection.

Couple the Digi 6350-SR with a dedicated wireline ISP connection to provide dual ISP connectivity and maximize uptime and performance, with the flexibility to deploy LTE

connections whenever you need reliable Internet access. The Digi 6350-SR can help “future-proof” network infrastructure with a stateful firewall and VPN capabilities. Choose from a suite of Digi CORE plug-ins to upgrade without replacing the router.

The Digi centralized management platform provides easy setup, configuration and support for installations of Digi and third-party devices. Digi Remote Manager® and aView™ offer web-based device management solutions to securely monitor and control Digi enterprise routers and gateways -- and the health of your network -- after deployment.

FEATURES AND BENEFITS

- 4G LTE certified Digi CORE 1002-CM plug-in modem
- LTE-Advanced, standard LTE, or LTE with EV-DO fallback
- Upgrade to meet changing cellular standards
- Ethernet WAN port for wireline network access
- Optional high-speed Wi-Fi
- Onboard USB 2.0 port
- Zero-touch provisioning and cloud management
- RS-232 serial port for out-of-band console management

RELATED PRODUCTS



Digi 6310-DX



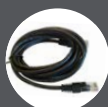
Digi 6330-MX



DIGI CORE
1002-CM

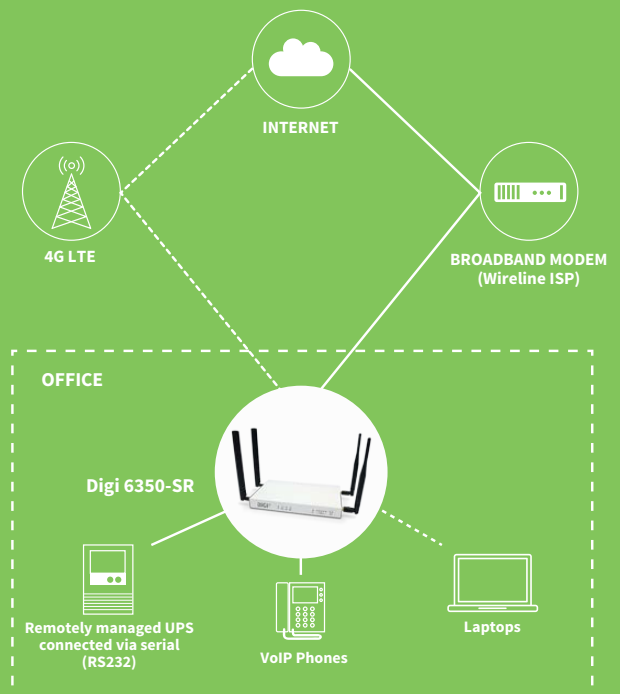


Changeable Power
Supply Plug Tips



Ethernet Cable

APPLICATION EXAMPLE



SPECIFICATIONS

DIGI 6350-SR AND DIGI CORE 1002-CM

| SOFTWARE | |
|---------------------------|---|
| REMOTE MANAGEMENT | Digi aView™ (cloud based); SNMP v1/v2/v3 (support for Digi Remote Manager® 1Q2019) |
| PROTOCOLS | RIP, RIPng, OSPFv2, OSPFv3, BGP, Babel, IS-IS |
| SECURITY | AES, 3DES, IKEv1, OpenVPN, MODECFG, X509, SHA1, DES, MD5, RADIUS, TACACS+ |
| PHYSICAL | |
| DIMENSIONS (L x W x H) | Digi 6350-SR: 9.0 in x 5.0 in x 1.0 in (228 mm x 127 mm x 25 mm); Digi CORE 1002-CM: 4.0 in x 2.0 in x 0.6 in (102 mm x 51 mm x 15 mm) |
| WEIGHT | Digi 6350-SR: 26 oz. (0.73 kg); Digi CORE 1002-CM: 5.5 oz. (0.156 kg) |
| STATUS LEDs | Power on, WAN activity, LAN activity, Wi-Fi activity, LTE, 5 Signal, SIM 1 and 2 |
| POWER REQUIREMENTS | |
| POWER SUPPLY | 12V DC, 1.5A; 100-240 AC |
| OTHER | Changeable power supply plug tips, ethernet cable |
| ENVIRONMENTAL | |
| OPERATING TEMPERATURE | 0° C to 40° C (32° F to 104° F) |
| STORAGE TEMP AND HUMIDITY | -13° F to 167° F (-25° C to 75° C); 5% to 95% non-condensing |
| APPROVALS | |
| EMISSIONS / IMMUNITY | FCC Part 15, Subpart B, Class A; CE, RCM; CAN ICES-3(B)/NMB-3(B) |
| CELLULAR SPECIFICATIONS | |
| CELL ANTENNA | (2) Dipole; Frequency: 700-960/1575-2700 hz; Gain: 1-4 dBi |
| SIM | (2) SIM card slot (size 2FF), software selectable and hardware switchable |
| CELLULAR CERTIFICATIONS | AT&T, Sprint, T-Mobile, Verizon, PTCRB |
| LTE PLUG-IN MODEMS | Digi CORE 1002-CM03 CAT 3 LTE, EVDO, HSPA+, EDGE, GPRS and GSM Digi CORE 1002-CM04* CAT 4 LTE, HSPA+, UMTS Digi CORE 1002-CM06 CAT 6 LTE-A, LTE, HSPA+ Digi CORE 1002-CM16 CAT 6 LET-A, LTE, HSPA+ |
| INTERFACES | |
| ETHERNET PORTS | (5) 10/100/1000 Base-T Ethernet ports (default 1 WAN, 4 LAN) |
| WARRANTY | |
| PRODUCT WARRANTY | 3 years |

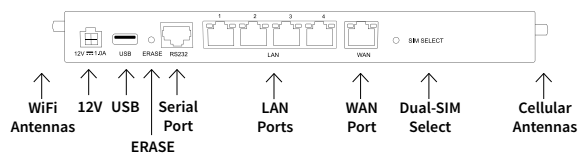
*The Digi CORE 1002-CM04 is not supported on the Sprint Network

PRODUCT IMAGES

DIGI 6350-SR TOP



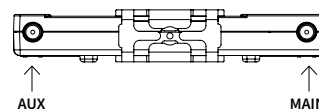
DIGI 6350-SR BACK



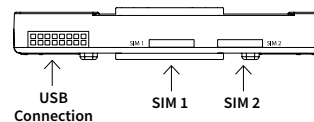
DIGI CORE 1002-CM TOP



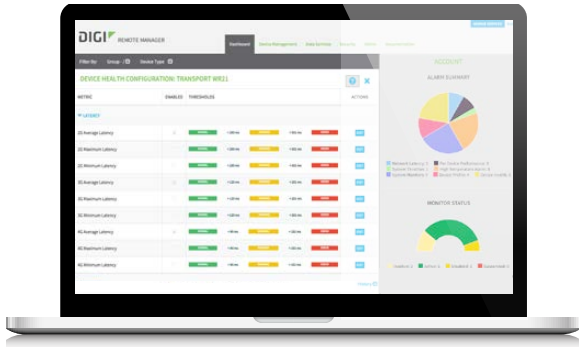
DIGI CORE 1002-CM FRONT



DIGI CORE 1002-CM BACK



DIGI REMOTE MANAGER® (AVIEW™ CLOUD MANAGEMENT AVAILABLE FOR ENTERPRISE ROUTERS)



CAPABILITIES

- Centralized management of remote devices over 3G/4G/LTE
- Define standard configurations and automatically monitor individual devices for PCI security compliance
- Report and alert on performance statistics, including connection history, signal quality, latency, data usage and packet loss
- No servers or applications to operate and maintain
- Complete tasks for your entire device network in minutes
- Edit configurations and update firmware for your individual devices or groups
- Monitor the status and location of your remote device via a web browser
- Active or deactivate cellular lines and monitor data to ensure you never incur overage charges

INFRASTRUCTURE

- Hosted in a commercial-grade SAS 70-certified environment
- Superior availability, operating to 99.9% or greater
- Open APIs available to support application development

SECURITY

- Certified SSAE-16 facilities
- Over 175 Security Controls in place to protect your data
- Enables compliance with security frameworks like PCI, HIPAA, NIST and more
- Earned SkyHigh's Cloud Trust Program highest ranking of Enterprise-Ready

| PART NUMBERS | DIGI 6350-SR AND DIGI CORE 1002-CM |
|-------------------|--|
| ASN-6350-SR03-GLB | Digi 6350-SR03 LTE router; 5 port GigE; 1 serial port; 1 USB port; Wi-Fi; CAT 3; LTE / HSPA+ / EV-DO; Cellular certifications: Verizon, AT&T, Sprint, T-Mobile, PTCRB |
| ASB-6355-SR03-GLB | Digi 6355-SR03 LTE router; 5 port GigE; 1 serial port; 1 USB port; Without Wi-Fi; CAT 3; LTE / HSPA+ / EV-DO; Cellular certifications: Verizon, AT&T, Sprint, T-Mobile, PTCRB |
| ASN-6350-SR04-GLB | Digi 6350-SR04 LTE router; 5 port GigE; 1 serial port; 1 USB port; Wi-Fi; CAT 4; LTE / HSPA+; Cellular certifications: Verizon, AT&T, T-Mobile, PTCRB |
| ASB-6355-SR04-GLB | Digi 6355-SR04 LTE router; 5 port GigE; 1 serial port; 1 USB port; Without Wi-Fi; CAT 4; LTE / HSPA+; Cellular certifications: Verizon, AT&T, T-Mobile, PTCRB |
| ASN-6350-SR06-GLB | Digi 6350-SR06 LTE router; 5 port GigE; 1 serial port; 1 USB port; Wi-Fi; CAT 6; LTE-A / HSPA+; Cellular certifications: Verizon, AT&T, Sprint, T-Mobile, PTCRB; Certified countries / regions: European Union, European Economic Area and Switzerland |
| ASB-6355-SR06-GLB | Digi 6355-SR06 LTE router; 5 port GigE; 1 serial port; 1 USB port; Without Wi-Fi; CAT 6; LTE-A / HSPA+; Cellular certifications: Verizon, AT&T, Sprint, T-Mobile, PTCRB; Certified countries / regions: European Union, European Economic Area and Switzerland |
| ASB-1002-CM03-GLB | Digi CORE 1002-CM plug-In LTE modem; CAT 3; LTE / HSPA+ / EV-DO, cellular certifications: Verizon, AT&T, Sprint, T-Mobile, PTCRB |
| ASB-1002-CM04-OUS | Digi CORE 1002-CM plug-In LTE modem; CAT 4; LTE / HSPA+, cellular certifications: Verizon, AT&T, T-Mobile, PTCRB |
| ASB-1002-CM06-GLB | Digi CORE 1002-CM plug-In LTE modem; CAT 6; LTE-A / HSPA+, cellular certifications: Verizon, AT&T, Sprint, T-Mobile, PTCRB |
| ASB-1002-CM16-GLB | Digi CORE 1002-CM plug-In LTE modem; CAT 6; LTE-A / HSPA+; Cellular certifications: Australia / New Zealand |

| PART NUMBERS | ACCESSORIES |
|--------------|--|
| 450048 | Digi 635x-SR and 5400-RM universal switching power supply unit (PSU), AC100-240V, 50/60 Hz, MPN BI13-150080-I, PSU, 12VDC, 1.5A SMPS wall mount 4PIN molex connector with USA plug option fitted (replacement) |
| 500157 | Cable assembly passive POE power injector for Digi 633x-MX and Digi EX15, white 2.1mm barrel connector (replacement) |
| 170010 | (1) Wi-Fi antenna for Digi 6355-SR (replacement) |
| 170011 | (1) Antenna extender: 48 mm circle antenna magnetic base (base connector: SMA jack; Cable: Low loss CLF; Length: 50 cm with SMA plug (optional) |
| 170012 | (1) Cellular antenna (black) for Digi 5400-RM, 6300-CX, 6310-DX, 633x-MX, 635x-SR and AT&T VPN devices (replacement part) |

DIGI SERVICE AND SUPPORT / You can purchase with confidence knowing that Digi is always available to serve you with expert technical support and our industry leading warranty. For detailed information visit www.digi.com/support.

© 1996-2018 Digi International Inc. All rights reserved.
All trademarks are the property of their respective owners.

DIGI INTERNATIONAL WORLDWIDE HQ
877-912-3444 / 952-912-3444 / www.digi.com

DIGI INTERNATIONAL JAPAN
+81-3-5428-0261 / www.digi-intl.co.jp

DIGI INTERNATIONAL GERMANY
+49-89-540-428-0

DIGI INTERNATIONAL SINGAPORE
+65-6213-5380

DIGI INTERNATIONAL CHINA
+86-21-50492199 / www.digi.com.cn



Mouser Electronics

Authorized Distributor

Click to View Pricing, Inventory, Delivery & Lifecycle Information:

DIGI:

[ASN-6350-SR03-GLB](#) [ASN-6350-SR06-GLB](#) [ASN-6350-SR04-GLB](#) [ASN-6350-SRE4-GLB](#) [ASN-6350-SR16-GLB](#)
[ASB-6355-SR03-GLB](#) [ASB-6355-SR04-GLB](#) [ASB-6355-SR06-GLB](#) [170010](#) [450048](#)