

MEA-5900-CM

2.4/5.0/6.0 GHz ISM Connector Mount
Part #: 100-00300-01

Description

The MEA-5900-CM connector Mount Antenna is a low profile antenna solution, with a very high-performance ideal for maintaining constant network connectivity. The MEA-5900-CM covers all 2.4/5.0/6.0 ISM standard frequencies. This is an ideal antenna for telematics systems, remote surveillance, asset tracking and any IOT WIFI system applications. The high performance and low profile make this antenna ideal for the most challenging installations.

This connector mount antenna is easy to install with maximum durability housing and anti-rotation mounting. The MEA-5900-CM has a hinged Connector and SMA Connector.

Electrical Specification

Parameter	Specifications	
Standards	WiFi, BT, ZigBee, ISM	
Band	2.4 GHz	5.0 GHz
Frequency Range	2410-2490 MHz	4920-5925 MHz
Return Loss	~-17.1	~-12.3
VSWR	~1.4:1	~1.7:1
Efficiency (%)	~75.8	~84.5
Peak Gain (dBi)	~4.1	~3.9
Average Gain (dB)	~-1.2	~-0.7
Impedance (Ohm)	50	
Polarization	Linear	
Radiation Pattern	Omni-Directional	
Max Input Power	25	
Connector Type	Most RF Connectors (RP-SMA-Male Standard)	

Mechanical Specification

Parameter	Specifications
Antenna Dimensions (mm)	135 x 19 x 10
Operating Temperature (C)	-40 to +85
Storage Temperature (C)	-40 to +85
Mounting Type	Connector Mount
Radome/Color	ABS UV Stable/ Black
Substance Compliance	RoHS
Measured in	Certified CTIA 3D Anechoic Chamber
Connector Feature	Hinged

*Mounted on Free Space

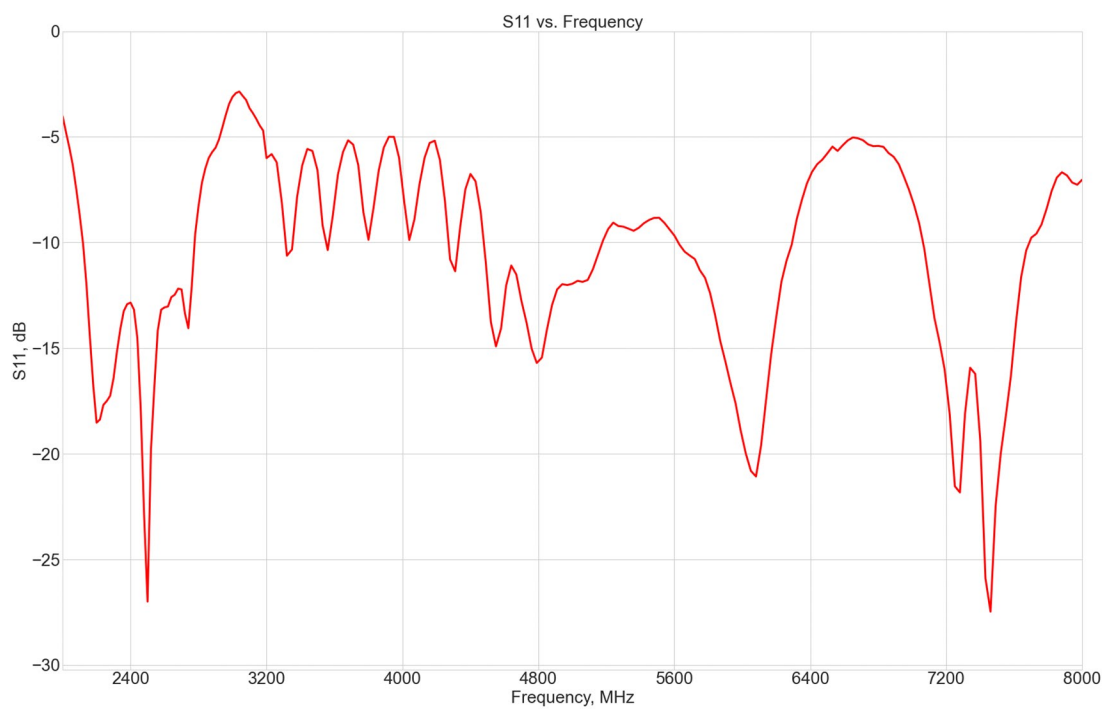
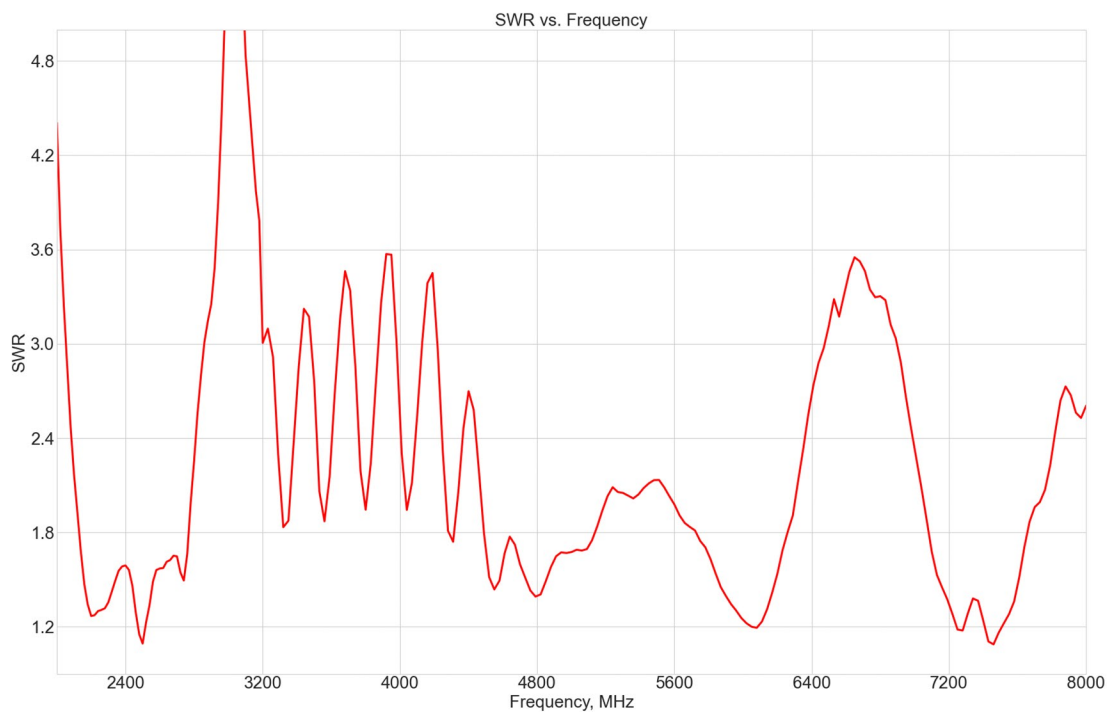


Features

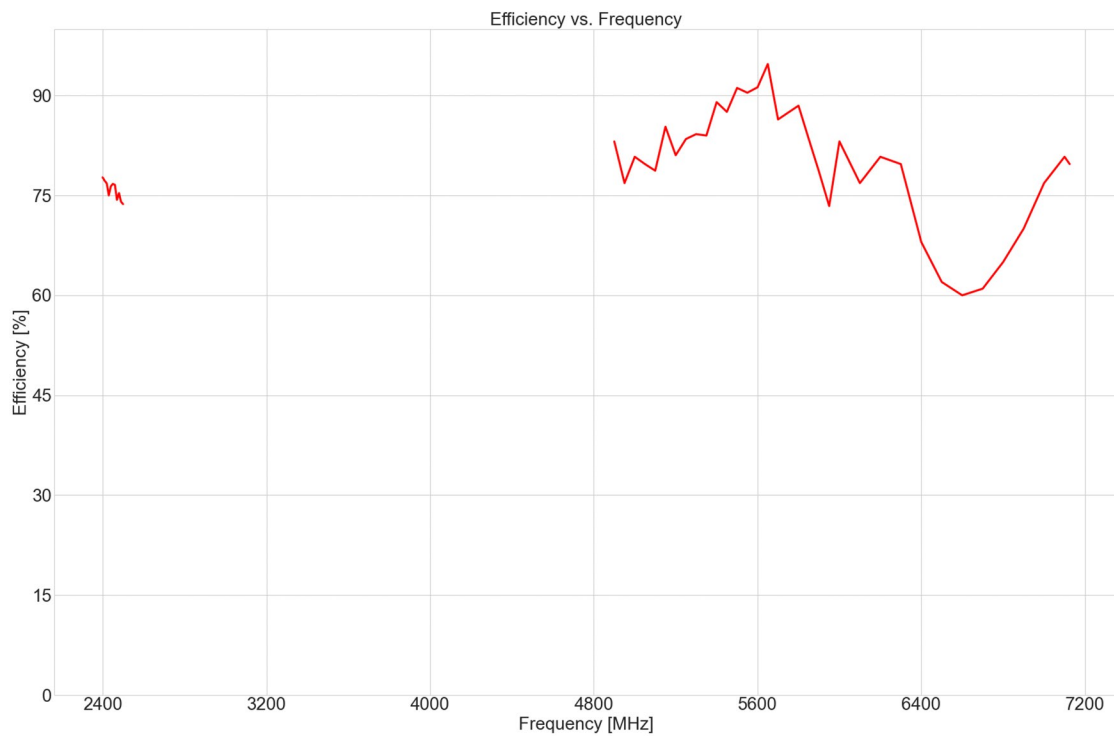
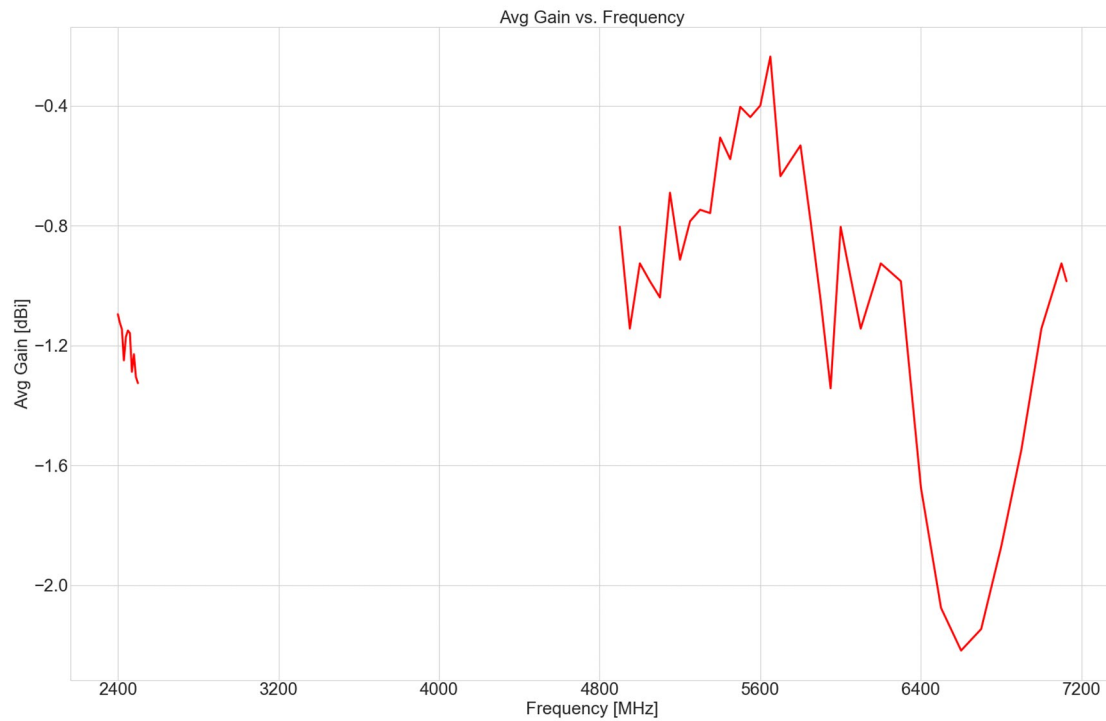
- 2.4/5.0/6.0 GHz ISM - 2410-2490 MHz - 4920-7125 MHz frequency coverage
- WiFi 6E Antenna
- High Gain
- Ground Plane Independent
- Hinged Connector
- Dimensions 135 x 19 x 10 mm

Applications

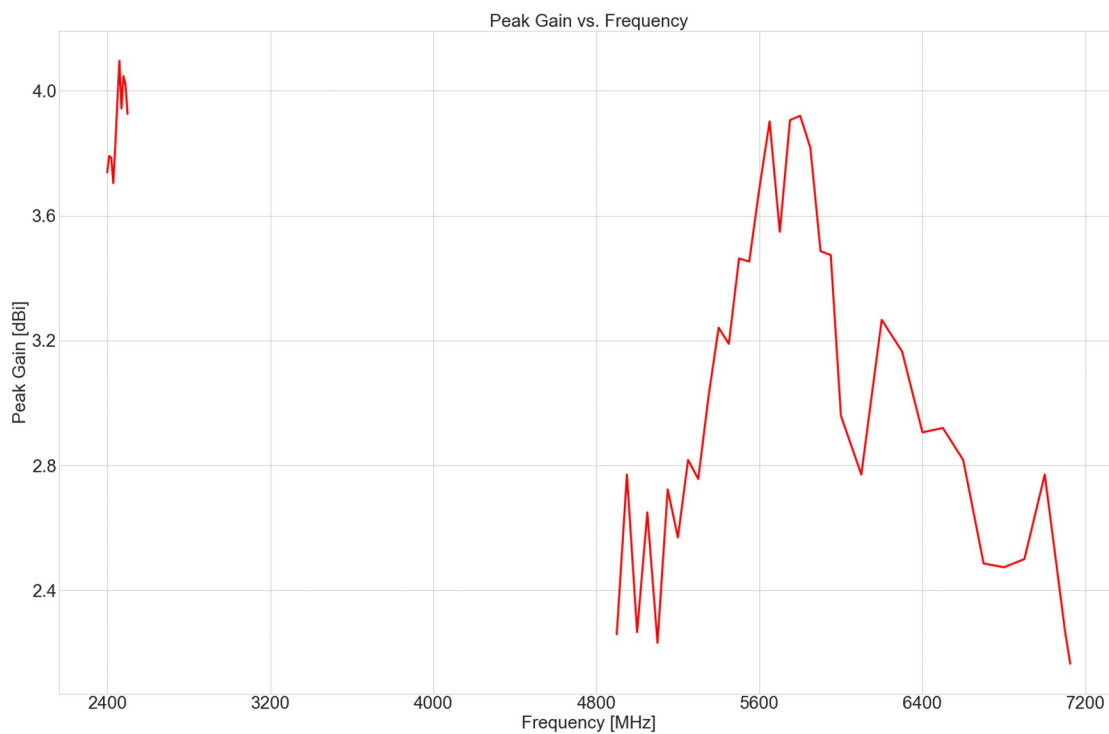
- WiFi applications
- Navigation and telematics systems
- IoT
- Automotive connectivity
- Multimedia
- Fleet management
- HD video and audio streaming



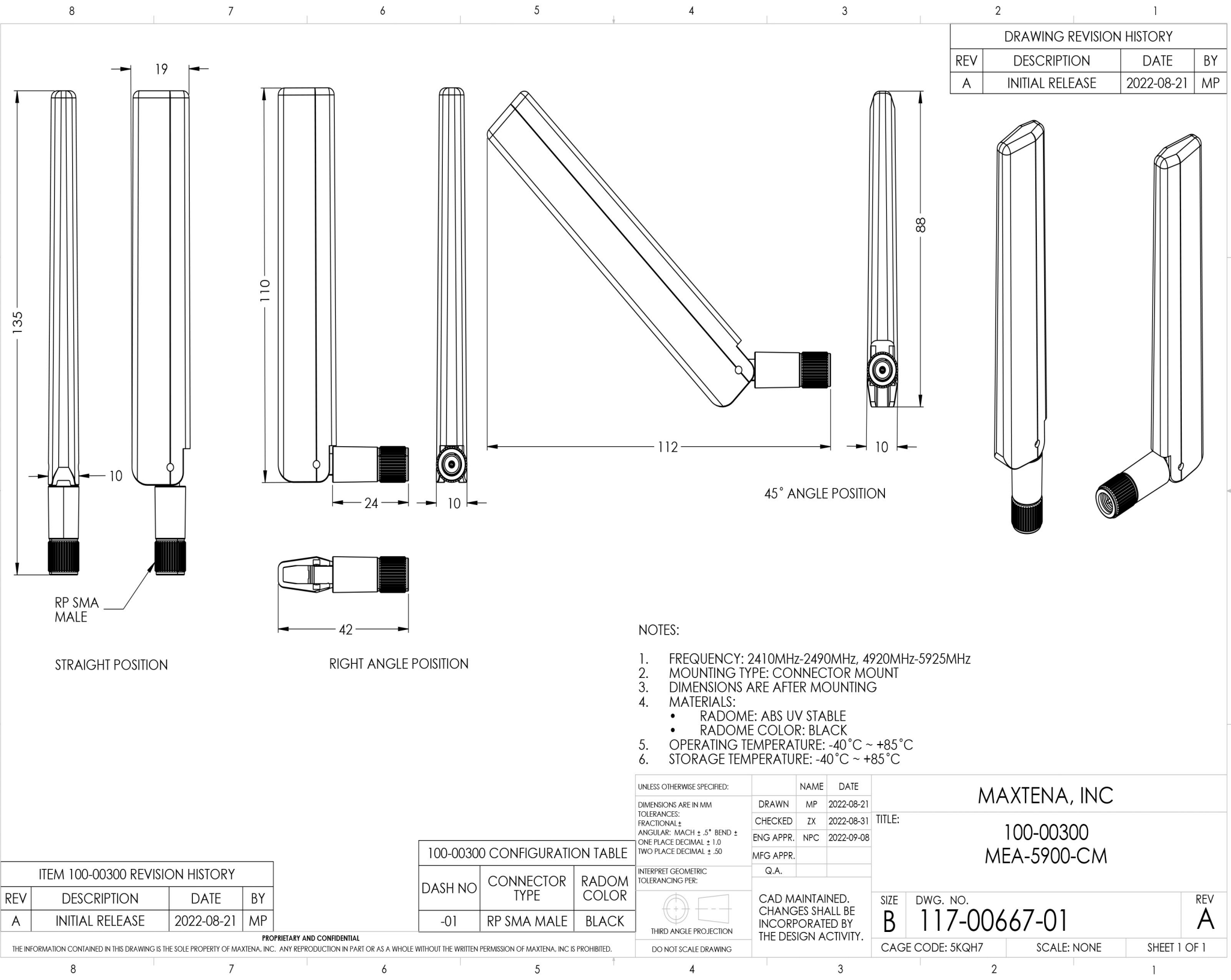
Maxtena Inc.
7361 Calhoun Place, Suite 102
Rockville, MD 20855
1-877-629-8362
info@maxtena.com
www.maxtena.com



Maxtena Inc.
 7361 Calhoun Place, Suite 102
 Rockville, MD 20855
 1-877-629-8362
info@maxtena.com
www.maxtena.com



Maxtena Inc.
7361 Calhoun Place, Suite 102
Rockville, MD 20855
1-877-629-8362
info@maxtena.com
www.maxtena.com



Mouser Electronics

Authorized Distributor

Click to View Pricing, Inventory, Delivery & Lifecycle Information:

Maxtena:

[MEA-5900-CM](#)