

ME A-2400-CM

2.4 GHz ISM Connector Mount

Part #: 100-00278-01

Description

The MEA-2400-CM connector mount Antenna is a low profile antenna solution, with a very high-performance ideal for maintaining constant network connectivity. The MEA-2400-CM covers all WiFi, BT, ZigBee, and ISM standard frequencies. This is an ideal antenna for telematics systems, remote surveillance, asset tracking and any IOT system applications.

The MEA-2400-CM is easy to install with maximum durability and anti-rotation mounting. The high performance and low profile make this antenna ideal for the most challenging installations.

Electrical Specification

Parameter	Specifications
Standards	WiFi, BT, ZigBee, ISM
Band MHz	2400
Frequency Range	2410-2490
Return Loss	~8.4
VSWR	~2.2:1
Efficiency (%)	~68
Peak Gain (dBi)	~3.6
Average Gain (dB)	~-1.6
Impedance (Ohm)	50
Polarization	Linear
Radiation Pattern	Omni-Directional
Max Input Power	25
Connector Type	RP-SMA-Male Standard

Mechanical Specification

Parameter	Specifications
Antenna Dimensions (mm)	Ø 9.5 × 56
Operating Temperature (C)	-40 to +85
Storage Temperature (C)	-40 to +85
Mounting Type	Connector Mount
Radome/Color	TPE/ Black
Substance Compliance	RoHS
Measured in	Certified CTIA 3D Anechoic Chamber

*Mounted on Ground Plane of 70x35 mm

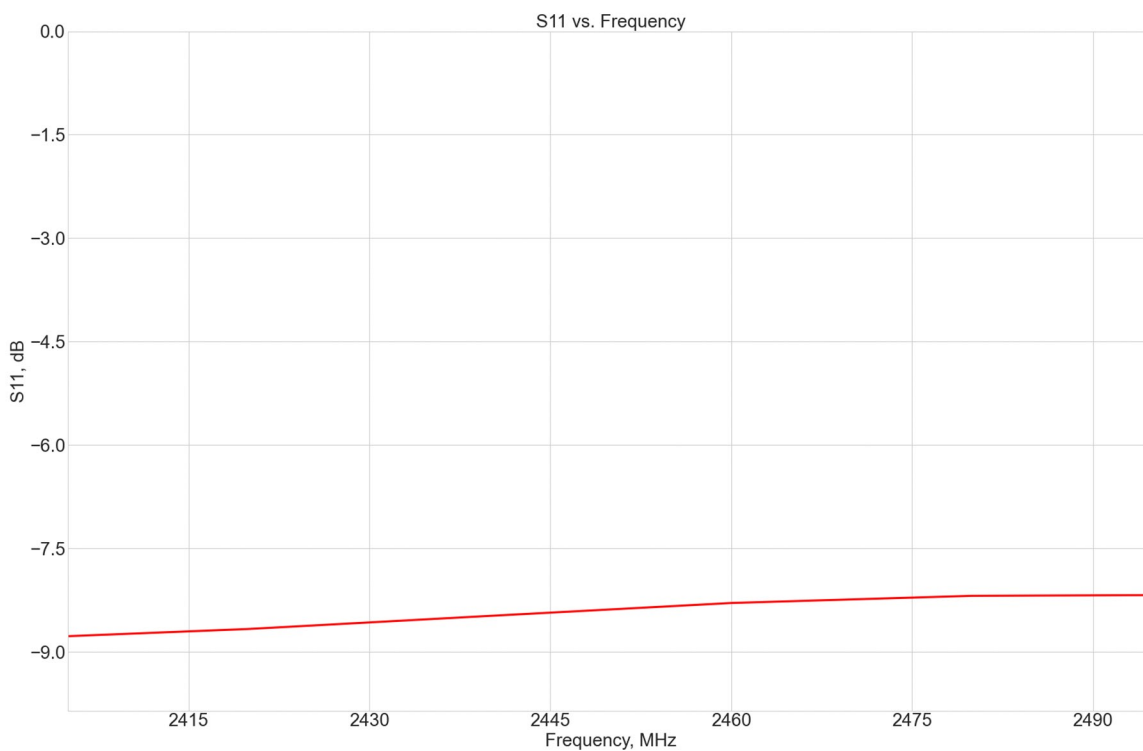
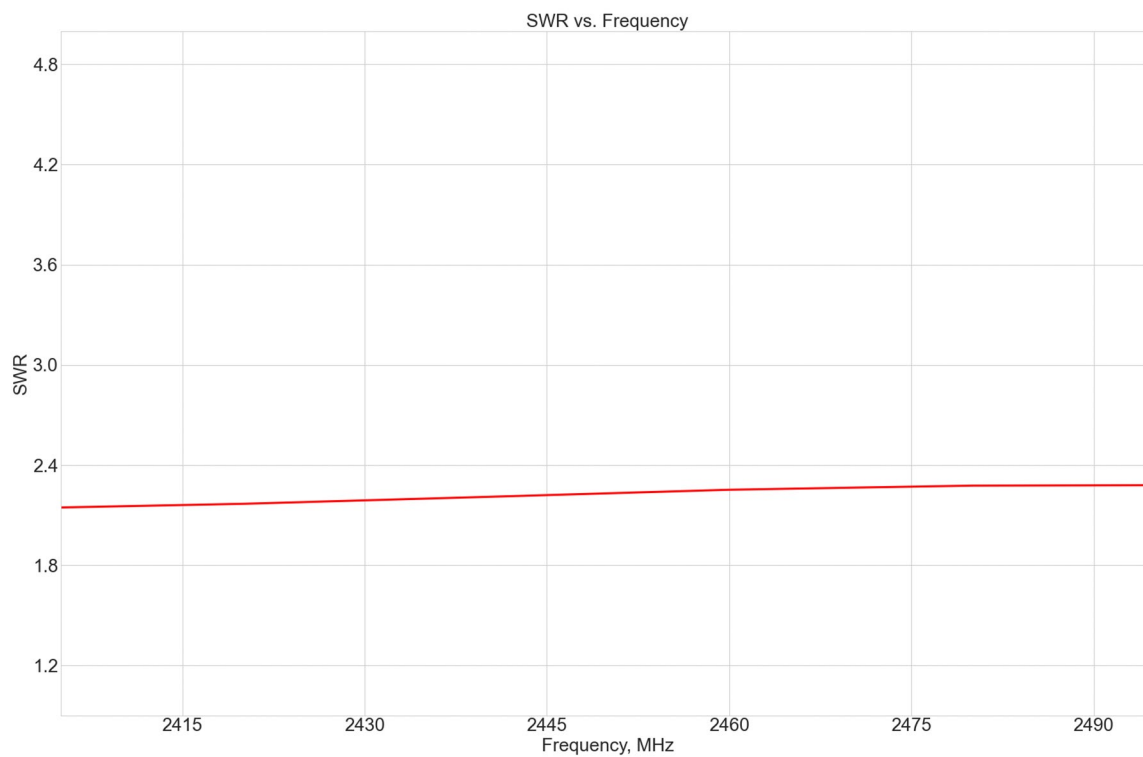


Features

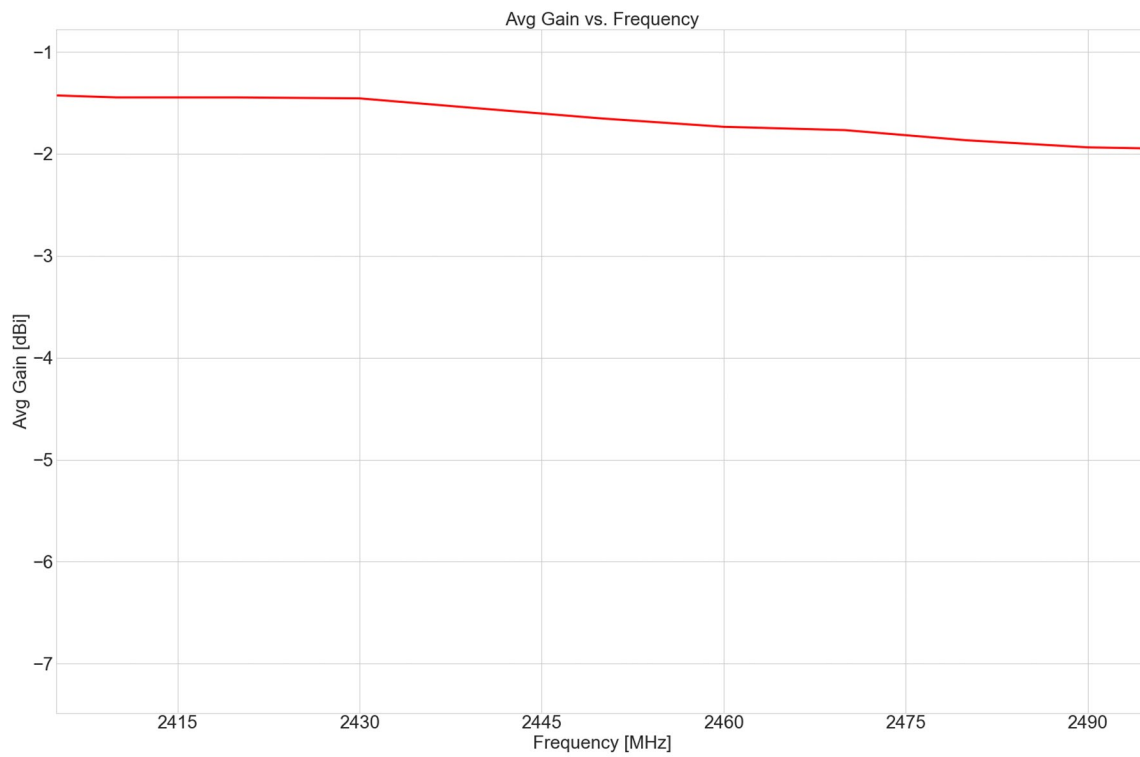
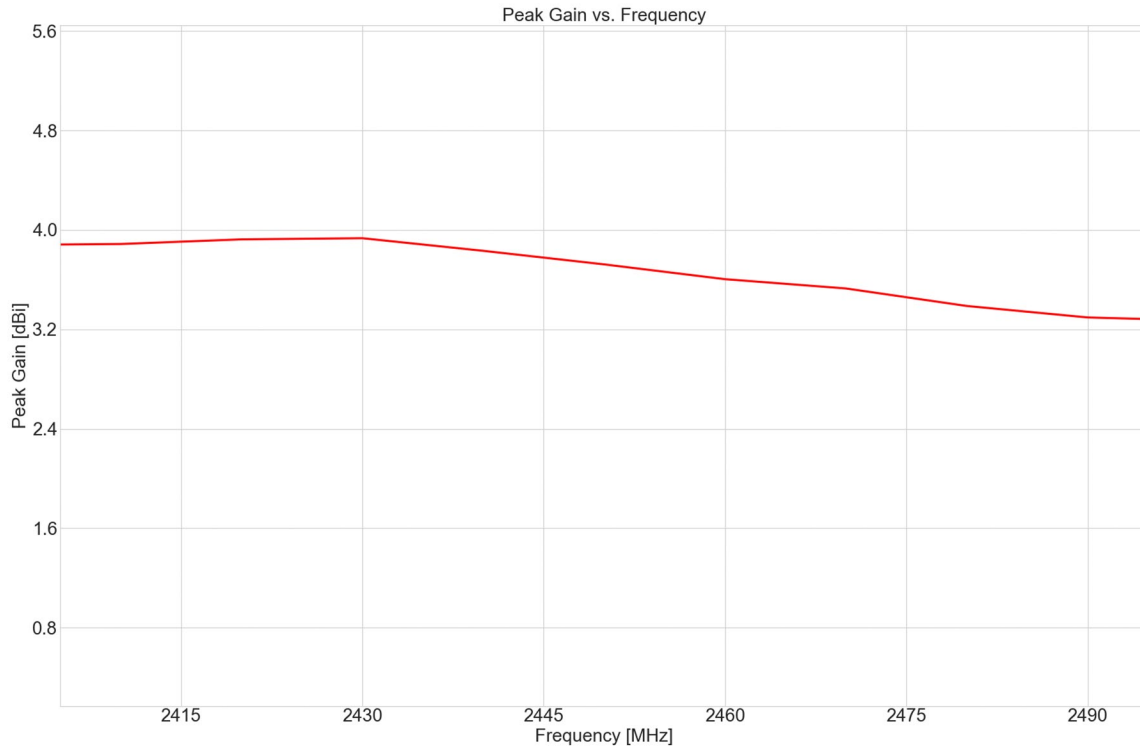
- 2.4 GHz ISM (2410-2490 MHz)
- Easy mounting: Connector Mount
- Low Profile
- Dimensions Ø 9.5 × 56 mm

Applications

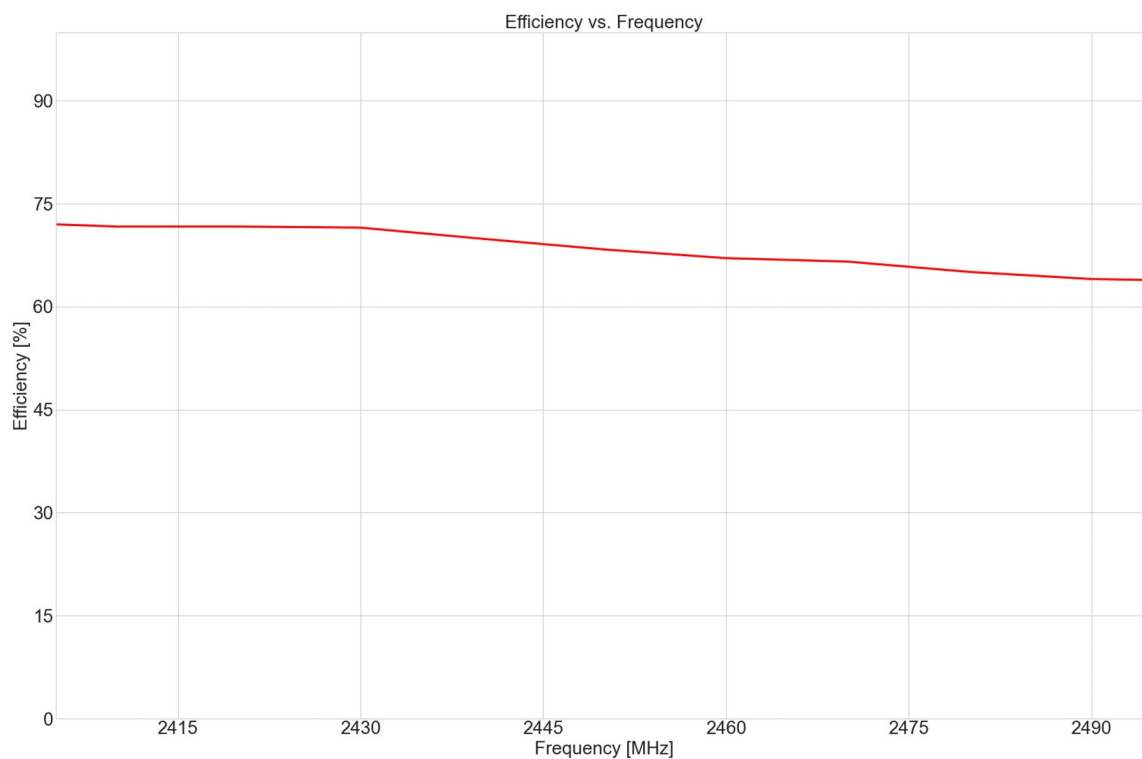
- Wi-Fi applications
- Navigation and telematics systems
- IoT applications
- Automotive connectivity
- Multimedia
- Fleet management
- HD video and audio streaming



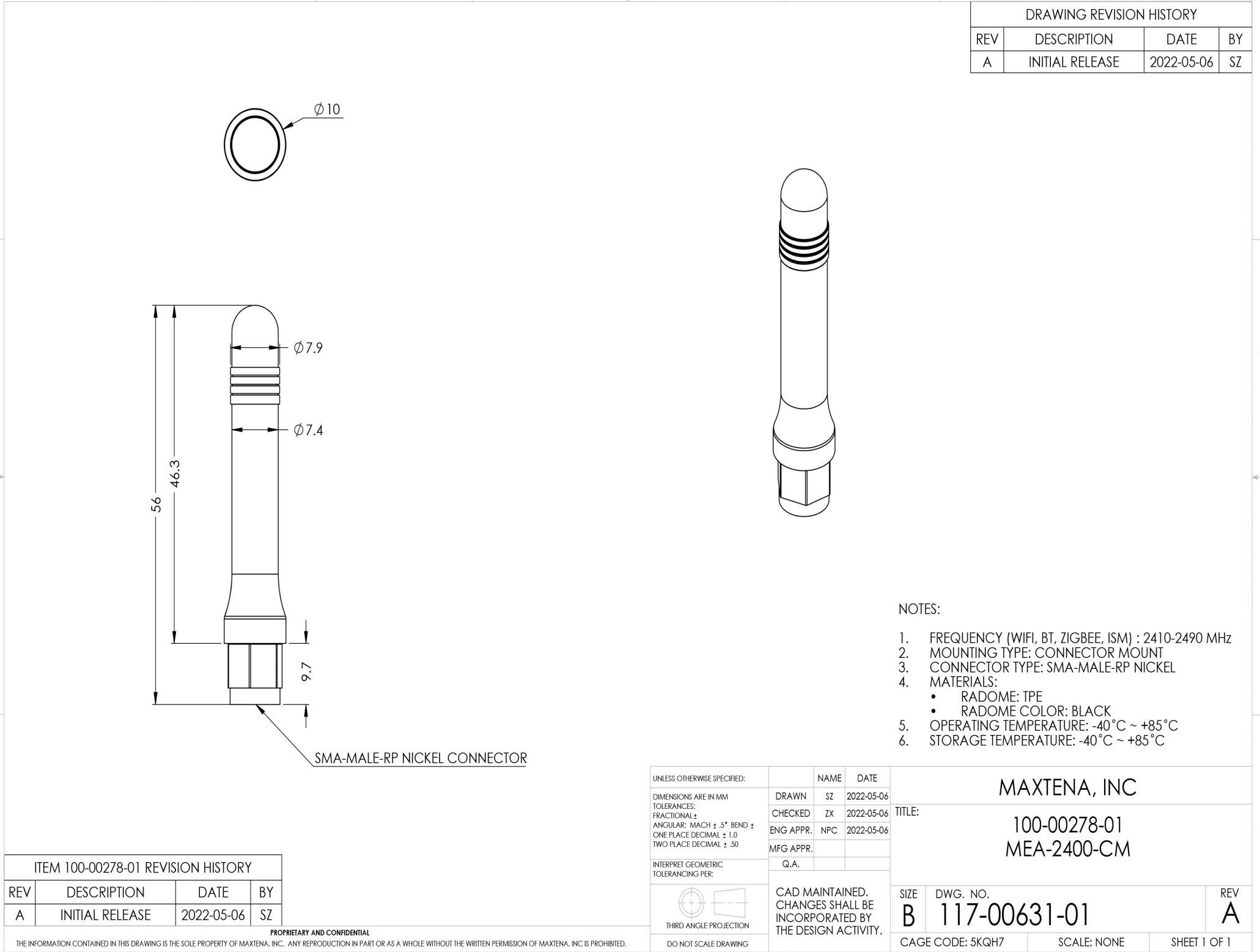
Maxtena Inc.
7361 Calhoun Place, Suite 102
Rockville, MD 20855
1-877-629-8362
info@maxtena.com
www.maxtena.com



Maxtena Inc.
7361 Calhoun Place, Suite 102
Rockville, MD 20855
1-877-629-8362
info@maxtena.com
www.maxtena.com



Maxtena Inc.
7361 Calhoun Place, Suite 102
Rockville, MD 20855
1-877-629-8362
info@maxtena.com
www.maxtena.com




DRAWING REVISION HISTORY			
REV	DESCRIPTION	DATE	BY
A	INITIAL RELEASE	2022-05-06	SZ

- NOTES:
- FREQUENCY (WIFI, BT, ZIGBEE, ISM) : 2410-2490 MHz
 - MOUNTING TYPE: CONNECTOR MOUNT
 - CONNECTOR TYPE: SMA-MALE-RP NICKEL
 - MATERIALS:
 - RADOME: TPE
 - RADOME COLOR: BLACK
 - OPERATING TEMPERATURE: -40°C ~ +85°C
 - STORAGE TEMPERATURE: -40°C ~ +85°C

ITEM 100-00278-01 REVISION HISTORY			
REV	DESCRIPTION	DATE	BY
A	INITIAL RELEASE	2022-05-06	SZ

PROPRIETARY AND CONFIDENTIAL
THE INFORMATION CONTAINED IN THIS DRAWING IS THE SOLE PROPERTY OF MAXTENA, INC. ANY REPRODUCTION IN PART OR AS A WHOLE WITHOUT THE WRITTEN PERMISSION OF MAXTENA, INC IS PROHIBITED.

UNLESS OTHERWISE SPECIFIED:		NAME		DATE		MAXTENA, INC					
DIMENSIONS ARE IN MM		DRAWN	SZ	2022-05-06		TITLE: 100-00278-01 MEA-2400-CM					
TOLERANCES:		CHECKED	ZX	2022-05-06							
FRACTIONAL ±		ENG APPR.	NPC	2022-05-06							
ANGULAR: MACH ± .5° BEND ±		MFG APPR.									
ONE PLACE DECIMAL ± 1.0											
TWO PLACE DECIMAL ± .50											
INTERPRET GEOMETRIC TOLERANCING PER:		Q.A.									
		CAD MAINTAINED. CHANGES SHALL BE INCORPORATED BY THE DESIGN ACTIVITY.				SIZE B		DWG. NO. 117-00631-01		REV A	
THIRD ANGLE PROJECTION											
DO NOT SCALE DRAWING						CAGE CODE: 5KQH7		SCALE: NONE		SHEET 1 OF 1	

Mouser Electronics

Authorized Distributor

Click to View Pricing, Inventory, Delivery & Lifecycle Information:

Maxtena:

[MEA-2400-CM](#)