

## SOLDERED INKPLATE 6COLOR



**Weight** 179 g

**Variant** With e-paper & Enclosure,

---

### DESCRIPTION

If you're like us, you thought: "If only I could use a screen like this in my project", first time you saw an e-book reader. Thanks to the exceptional sharpness and contrast, the ability to display in sunlight and truly unprecedented efficiency in terms of energy (it consumes energy only when changing the content on the screen), electronic paper is the ideal choice for many applications. Inkplate 6COLOR, continuing the tradition of the now well-known Inkplate series, continues to offer variations of e-paper accessible to hobbyists and everyone else in a way that we have made plug-and-play hardware, really easy to use and compatible with Arduino and micropython. Inkplate 6COLOR brings a unique innovation - the ability to display colors on the screen.

If we want to list only a few features, Epaper Inkplate 6COLOR has a 5.85-inch folded e-paper that displays a total of 7 different colors (Black, White, Red, Yellow, Blue, Green, and Orange). Considering the built-in dithering capability, the results you can get on the screen are really impressive. Powered by ESP32, you will have strong microcontroller with WiFi and Bluetooth on your disposal. It's super-low-power (18uA) so you can use it for days, weeks, or months out of a single battery charge. Using our [Arduino library \(100% compatible with Adafruit GFX\)](#), it's [5 minute work](#) to get the board running for you. The [Micropython module](#) is available as well. It's 100% open-source for both [software](#) and hardware. What is especially interesting is that Inkplate uses recycled screens taken from old e-book readers, which is very environmentally friendly, but you have to keep in mind that some screens may have small scratches because of this. All screens with large scratches and damages are not used at all.

#### Inkplate 6COLOR options:

**With e-paper display & enclosure:** This version offers a sturdy and sleek enclosure for your device, made with precision from a 3D printer. It's perfect for those who want an extra layer of protection without any

added features.

**With e-paper display, enclosure, and battery:** Upgrade to this version if you're looking for both protection and mobility. This option includes a 3D-printed enclosure as well as an integrated battery, ensuring your device stays powered even on the go.

**Without e-paper display:** For those who prefer a simpler or alternative display solution, this version does not include the e-paper display. It's ideal for users who have their own display solutions or prefer to use the device without a visual interface.

Choose the one that best fits your needs and enhance your experience!

## FEATURES

- 5.85-inch, 600x448 pixel electronic paper with the ability to display 7 different colors
- powered by an ESP32 microcontroller with built-in WiFi and Bluetooth 4.0 (BLE)
- consumes extremely small amount of power, whether powered by a lithium battery or USB, in deep sleep mode it consumes only 18  $\mu$ A, so it will run on one battery for years, and there is also a battery charger located on the board!
- microSD card reader from which Inkplate 6COLOR can extract images to display on its display
- additional GPIO lines available, easyC/Qwiic compatibility and I<sup>2</sup>C and SPI support
- Arduino library ready (100% compatible with Adafruit GFX) and micropython that enable display of text, images and geometric shapes
- Optional 3D-printed enclosure
- Optional 3D-printed enclosure and 1200mAh battery
- Optional version without e-paper display
- Dimensions for version without EPD: 131.5 x 105.5 x 10 mm / 5.2 x 4.2 x 0.4 inch

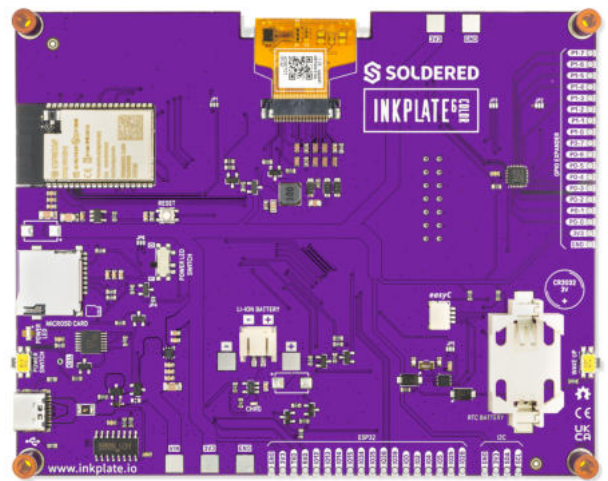
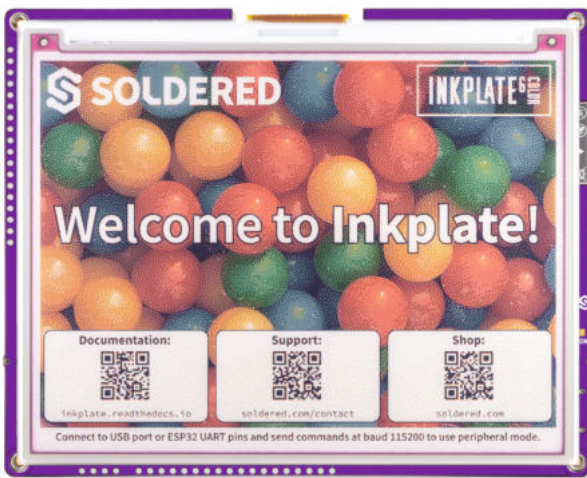
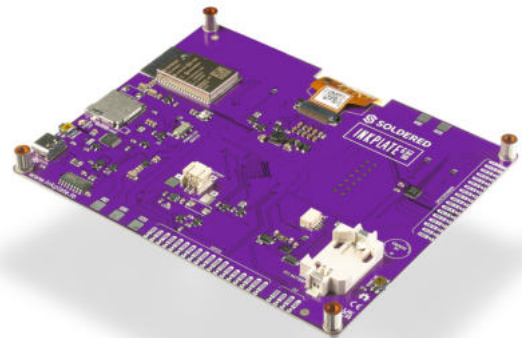
## USEFUL LINKS

- [Arduino library](#)
- [Inkplate documentation](#)
- [Getting started with Inkplate](#)

## TIPS

The version without e-paper display (EPD) is to be used by professionals. We do not offer support for this type of board.

## OTHER IMAGES



**Weight**

179 g

**Variant**

Without e-paper Display, With e-paper, With e-paper & Enclosure, With e-paper, Enclosure & Battery

**VARIATIONS**

**Image**



**SKU**

333240

**Variant**

Without e-paper Display

**Image**

**SKU**

**Variant**



333238

With e-paper



333239

With e-paper & Enclosure



333231

With e-paper, Enclosure & Battery