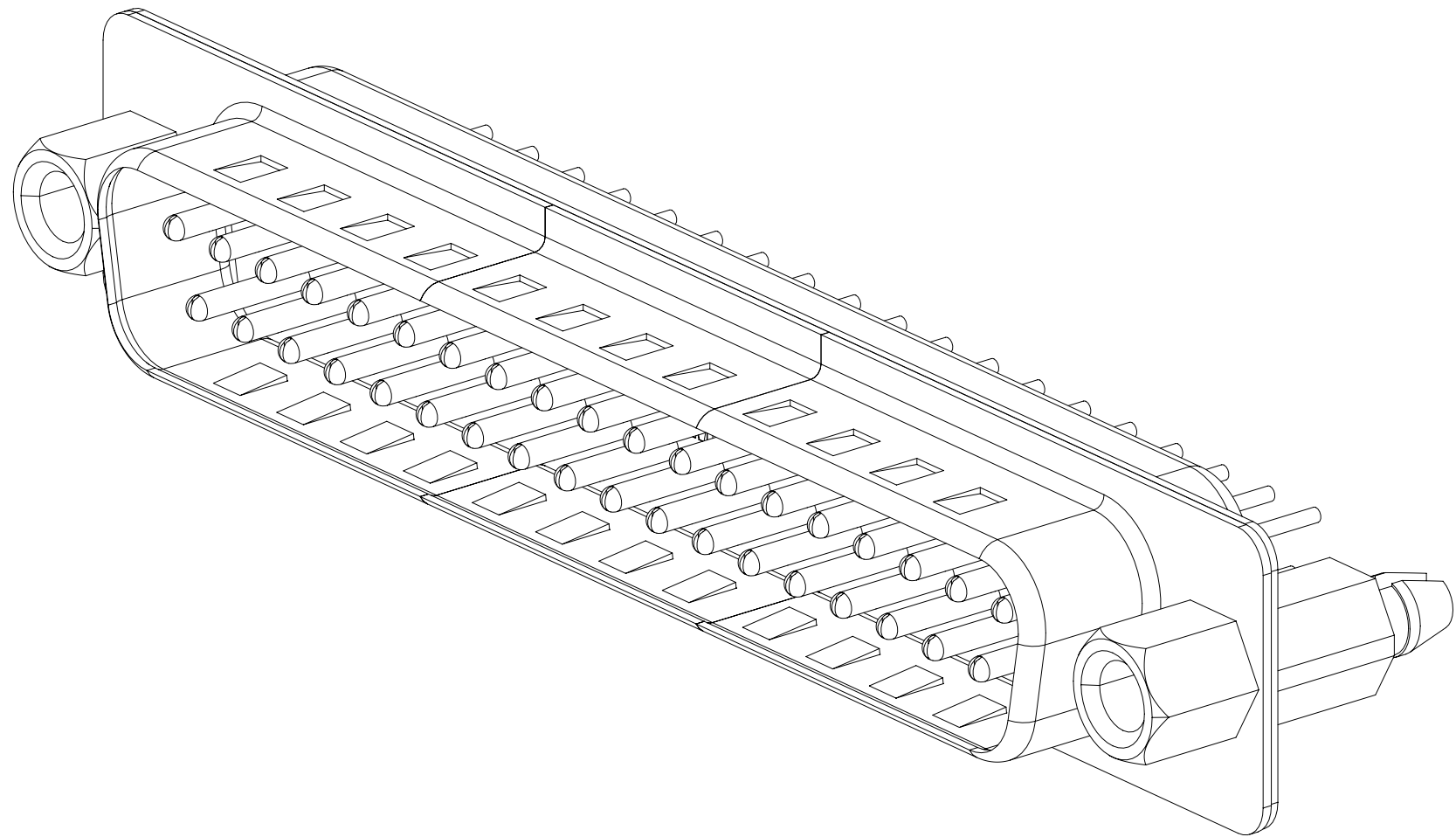


3M™ BOARDMOUNT D-SUB STRAIGHT PLUG CONNECTOR, 884 SERIES
MALE, SOLDER TAIL



2 PHYSICAL :

INSULATOR: GLASS FILLED POLYESTER (PBT)
MATERIAL: UL94V-0
FLAMMABILITY: BLACK
CONTACT: COPPER ALLOY
MATERIAL: PLATING:
UNDER PLATING: 1.27µm { 50µ" } AVG. NICKEL-OVERALL
WIPING AREA: 0.76µm { 30µ" } AVG. GOLD
SOLDER TAILS: 3µm-5µm { 0.076µ"-0.127µ" } MATTE TIN
MARKINGS: 3M LOGO

2 ELECTRICAL :

CURRENT RATING: 1A
INSULATION RESISTANCE: >1×10⁹Ω
WITHSTANDING VOLTAGE: 1,000V_{RMS}, 1mA, 60s
VOLTAGE RATING: 300V

2 ENVIRONMENTAL :

TEMPERATURE RATING: -40° C TO +100° C

ORDERING INFORMATION
884XX-6000

NUMBER OF PINS
(SEE TABLE 1)

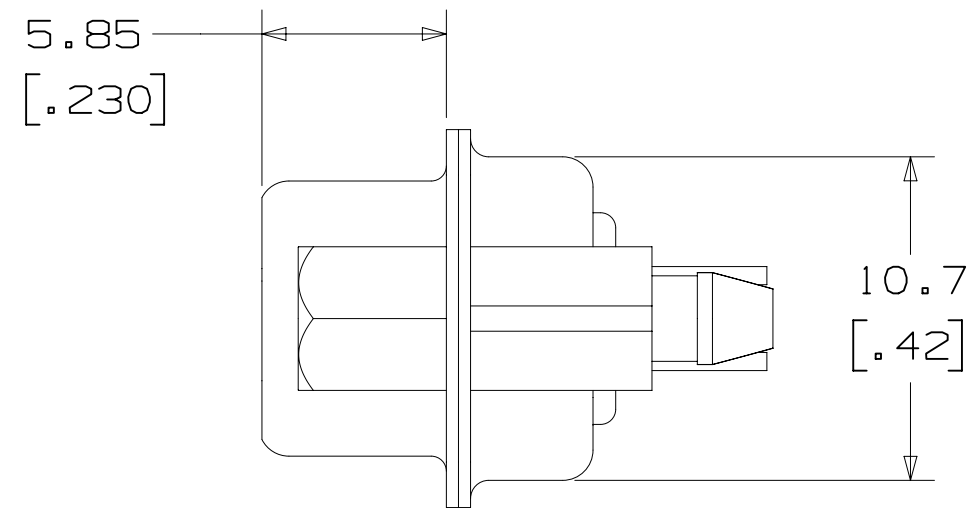
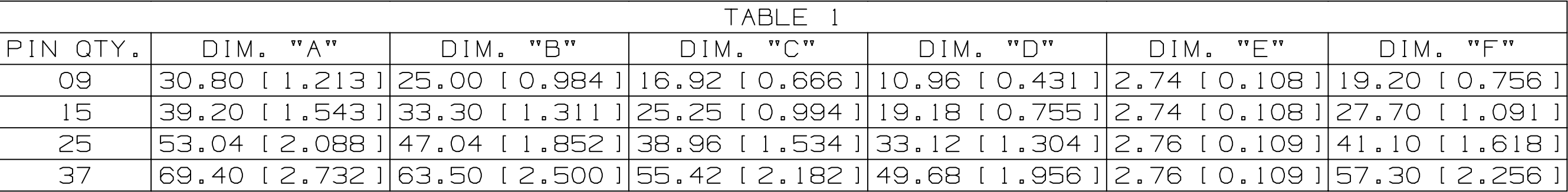
3M ELECTRONICS MATERIALS SOLUTIONS DIVISION
INTERCONNECT SOLUTIONS
<http://www.3M.com/interconnect>

3M IS A TRADEMARK OF 3M COMPANY.
FOR TECHNICAL, SALES OR ORDERING
INFORMATION CALL 800-225-5373



DIMENSIONS: MM [INCHES]
[INCHES] IS FOR REF. ONLY

| | | | | | | | | | | | | | | | |
|---|--|--|--|-----------------|---------|---|-------------|--|------|----------------------------------|----|--|-------------|--|--|
| DESIGNATIONS: MM [INCHES] ES) IS FOR REF. ONLY | | | | A | I111930 | NOV 01,2023 REMOVE CONTACT RESISTANCE | | | | JNC | JG | | | | |
| DESIGN REFERENCE | | | | NEXT ASSEMBLY | | REV | ECO | ISSUE DATE AND DESCRIPTION | | | | DRFT | CHKD | | |
| ADDRESS | | | | | | REV | CASTIGLIONE | | DATE | JUL 06,2023 | | MFG | DATE | | |
| CODES | | | | | | CHKD | | | DATE | | | APPR | J. GOERTZ | | |
| | | | | | | | | | | | | DATE | AUG 29,2023 | | |
| DIVISION | | | | DIVISION CODE | | <div>3M</div> <div>3M Center St. Paul, MN 55144</div> | | | | © 3M COPYRIGHT 2023 | | | | | |
| DO NOT SCALE DRAWING | | | | SCALE 4 1 | | | | | | TOLERANCES EXCEPT AS NOTED | | This document and the information it contains are 3M property and may not be reproduced or further distributed without the express permission, in writing or disclosed other than for 3M authorized purposes. All rights reserved. | | | |
| | | | | | | | | | | | | | | | |
| | | | | INCHES | | TITLE | | BOARDROOM D-SUB STRAIGHT MALE PLUG CONNECTOR | | | | | | | |
| THIRD ANGLE PROJECTION | | | | | | | | | | | | | | | |
| INTERPRET PER ASME Y14.5 - 2018 | | | | MILLIMETERS | | | | | | | | | | | |
| MAX SURFACE ROUGHNESS ✓ | | | | 0 .00 | | CAGE NUMBER | | SIZE | | DRAWING NO. | | REV. | | | |
| | | | | .000 ± | | D | | 78-5100-2790-3 | | A | | | | | |
| | | | | .0000 ± | | | | | | | | | | | |
| ✓ | | | | 0 .5 | | MODEL | | D-SUB | | DET. LISTS | | YES <input checked="" type="checkbox"/> NO | | | |
| | | | | .0 .38 | | | | | | | | | | | |
| | | | | 0 .25 | | | | | | | | | | | |
| ✓ <input type="checkbox"/> MARKED ONLY | | | | .000 ± | | | | | | | | | | | |
| | | | | .000 ± | | | | | | | | | | | |
| | | | | .000 ± | | | | | | | | | | | |
| | | | | ANGLES | | | | | | | | SHT 1 OF 3 | | | |

| NOTES | |
|-------|--------------------------------|
| 1. | N = TOTAL NUMBER OF TERMINALS. |



3M IS A TRADEMARK OF 3M COMPANY.
FOR TECHNICAL, SALES OR ORDERING
INFORMATION CALL 800-225-5373

| | | | | | | | | | | | | | | | | | |
|---|--|--|--|--|--|---|--|---|--|---|--|---------------------------|--|----------------|--|-------------------|--|
| | | | | | | A | | I11930 | | NOV 01, 2023 | | | | JNC | | JG | |
| | | | | | | | | REV | | ECO | | REMOVE CONTACT RESISTANCE | | | | | |
| DESIGN REFERENCE | | | | | | | | NEXT ASSEMBLY | | ISSUE DATE AND DESCRIPTION | | DATE | | DRFT | | CHKD | |
| ACCESS CODES | | | | | | | | DEPT CACT | | TITLE IONE | | DATE JUL 06, 2023 | | MFG | | DATE | |
| | | | | | | | | CHWD | | | | DATE | | APPR J. GOERTZ | | DATE AUG 29, 2023 | |
| DIVISION | | | | | | | | DIVISION CODE | | © 3M COPYRIGHT 2023 | | | | | | | |
| DO NOT SCALE DRAWING | | | | | | | | SCALE 1 | | TOLERANCES EXCEPT AS NOTED | | | | | | | |
|  | | | | | | | | INCHES | | <div style="display: flex; align-items: center;">  <div style="margin-left: 10px;"> <p>3M Center St., Paul, MN 55144</p> <p>This document and the information it contains are 3M property and may not be reproduced or further distributed without 3M permission, or used or disclosed other than for 3M authorized purposes. All rights reserved.</p> </div> </div> | | | | | | | |
| THIRD ANGLE PROJECTION | | | | | | | | +0.00 ± -0.00 ± +0.00 ± -0.00 ± | | TITLE BOARDMOUNT D-SUB STRAIGHT MALE PLUG CONNECTOR | | | | | | | |
| INTERPRET PER ASME Y14.5 - 2018 | | | | | | | | MILLIMETERS 0 ± .5 | | | | | | | | | |
| MAX SURFACE ROUGHNESS | | | | | | | | +0.0 ± .38 -0.00 ± .25 -0.00 ± .025 | | CAGE NUMBER | | | | | | | |
| <input checked="" type="checkbox"/> UNFINISHED SURFACES <input type="checkbox"/> MARKED ONLY | | | | | | | | ANGLES | | SIZE DRAWING NO. D 78-5100-2790-3 | | | | | | | |
| | | | | | | | | MODEL | | REV A | | | | | | | |
| | | | | | | | | O-SUB | | DET LISTS <input type="checkbox"/> YES <input checked="" type="checkbox"/> NO SHT 2 OF 4 | | | | | | | |

8

7

6

5

4

3

2

1

3M™ BOARDMOUNT D-SUB STRAIGHT PLUG CONNECTOR, 884 SERIES

MALE, SOLDER TAIL

Regulatory:

For regulatory information about this product, visit 3M.com/regs or contact your 3M representative.

Technical Information:

The technical information, guidance, and other statements contained in this document or otherwise provided by 3M are based upon records, tests, or experience that 3M believes to be reliable, but the accuracy, completeness, and representative nature of such information is not guaranteed. Such information is intended for people with knowledge and technical skills sufficient to assess and apply their own informed judgment to the information. No license under any 3M or third party intellectual property rights is granted or implied with this information.

Product Use:

Many factors beyond 3M's control and uniquely within user's knowledge and control can affect the use and performance of a 3M product in a particular application. As a result, customer is solely responsible for evaluating the product and determining whether it is appropriate and suitable for customer's application, including conducting a workplace hazard assessment and reviewing all applicable regulations and standards (e.g., OSHA, ANSI, etc.). Failure to properly evaluate, select, and use a 3M product in accordance with all applicable instructions and with appropriate safety equipment, or to meet all applicable safety regulations, may result in injury, sickness, death, and/or harm to property.

Warranty, Limited Remedy, and Disclaimer:

Unless a different warranty is specifically stated on the applicable 3M product packaging or product literature (in which case such warranty governs), 3M warrants that each 3M product meets the applicable 3M product specification at the time 3M ships the product. 3M MAKES NO OTHER WARRANTIES OR CONDITIONS, EXPRESS OR IMPLIED, INCLUDING, BUT NOT LIMITED TO, ANY IMPLIED WARRANTY OR CONDITION OF MERCHANTABILITY, FITNESS FOR A PARTICULAR PURPOSE, OR ANY IMPLIED WARRANTY OR CONDITION ARISING OUT OF A COURSE OF DEALING, CUSTOM, OR USAGE OF TRADE. If a 3M product does not conform to this warranty, then the sole and exclusive remedy is, at 3M's option, replacement or repair of the 3M product or refund of the purchase price.

Limitation of Liability:

Except for the limited remedy stated above, and except to the extent prohibited by applicable law, 3M will not be liable for any loss or damage arising from or related to the 3M product, whether direct, indirect, special, incidental, or consequential (including, but not limited to, lost profits or business opportunity), regardless of the legal or equitable theory asserted, including, but not limited to, warranty, contract, negligence, or strict liability.

Disclaimer:

For industrial use only. Not intended, labeled or packaged for consumer sale or use.

3M Company

Electronics Materials Solutions Division

13011 McCallen Pass, Bldg. C

Austin, TX 78753-5380

1-800-225-5373

www.3M.com/interconnect

3M ELECTRONICS MATERIALS SOLUTIONS DIVISION

INTERCONNECT SOLUTIONS

http://www.3M.com/interconnect

3M IS A TRADEMARK OF 3M COMPANY.

FOR TECHNICAL, SALES OR ORDERING

INFORMATION CALL 800-225-5373

DESIGN REFERENCE

NEXT ASSEMBLY

REV

ECO

ISSUE DATE AND DESCRIPTION

DRFT

CHKD

DO NOT SCALE DRAWING

SCALE 4 1

TOLERANCES EXCEPT AS NOTED

INCHES 0 ±.00 ±.002 ±.000 ±.0000

MILLIMETERS 0 ±.5 ±.38 ±.25 ±.025

INTERPRET PER ASME Y14.5 - 2018

MAX SURFACE ROUGHNESS

MARKED ONLY

3M

3M Center St. Paul, MN 55144

© 3M COPYRIGHT 2023

This document and the information it contains are 3M property and may not be reproduced or further distributed without 3M permission, or used or disclosed other than for 3M authorized purposes. All rights reserved.

TITLE BOARDMOUNT D-SUB STRAIGHT MALE PLUG CONNECTOR

CAGE NUMBER D

SIZE

DRAWING NO. 78-5100-2790-3

REV. A

MODEL D-SUB

DET

LISTS

YES

NO

SHT 3 OF 3

A

111930

NOV 01,2023

REMOVE CONTACT RESISTANCE

JNC

JG

8

7

6

5

4

3

2

1